

Supplementary File

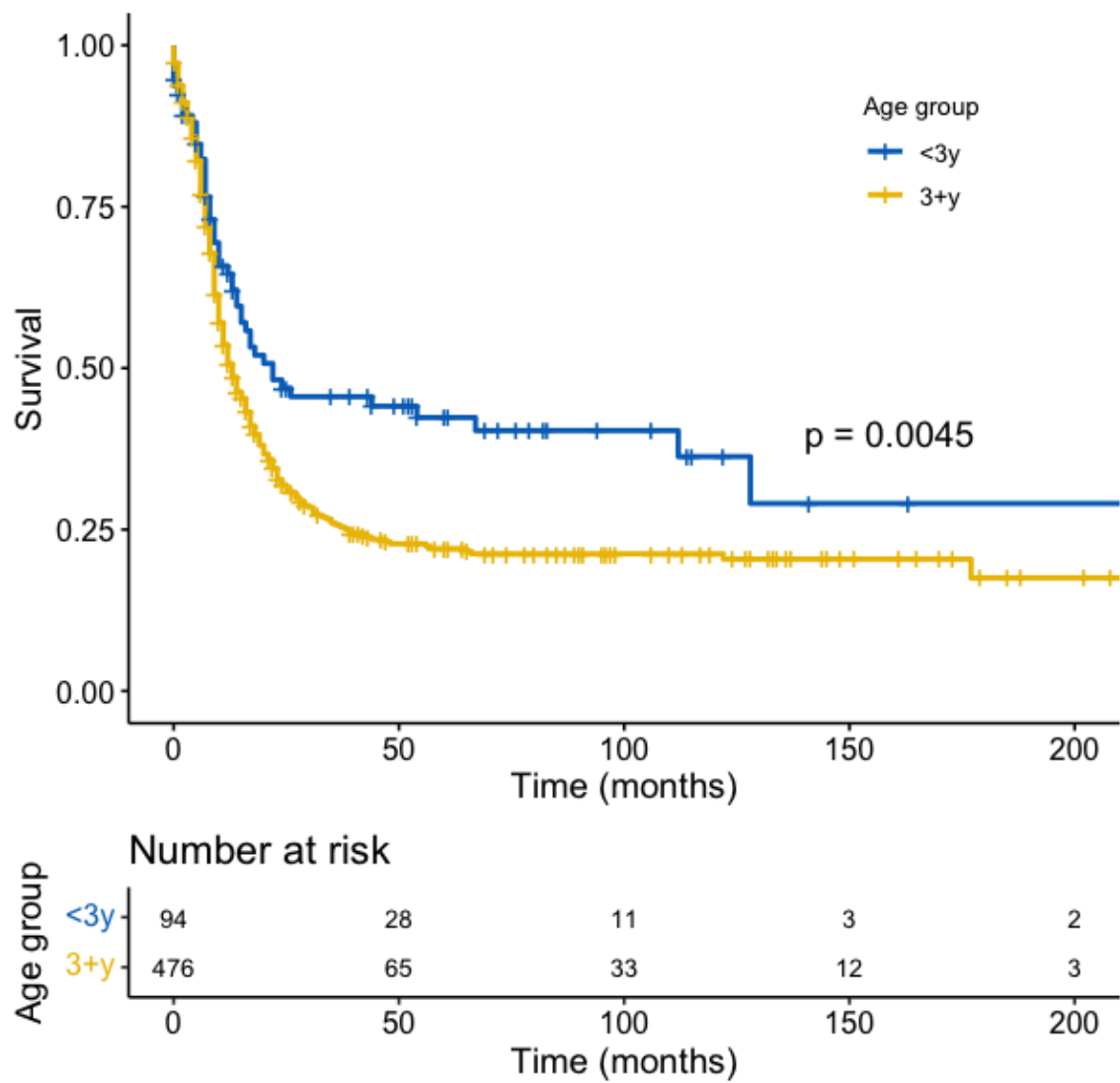


Figure S1. Analysis of the high-grade glioma (grade III and IV) excluding brainstem tumors (n = 570) according to age

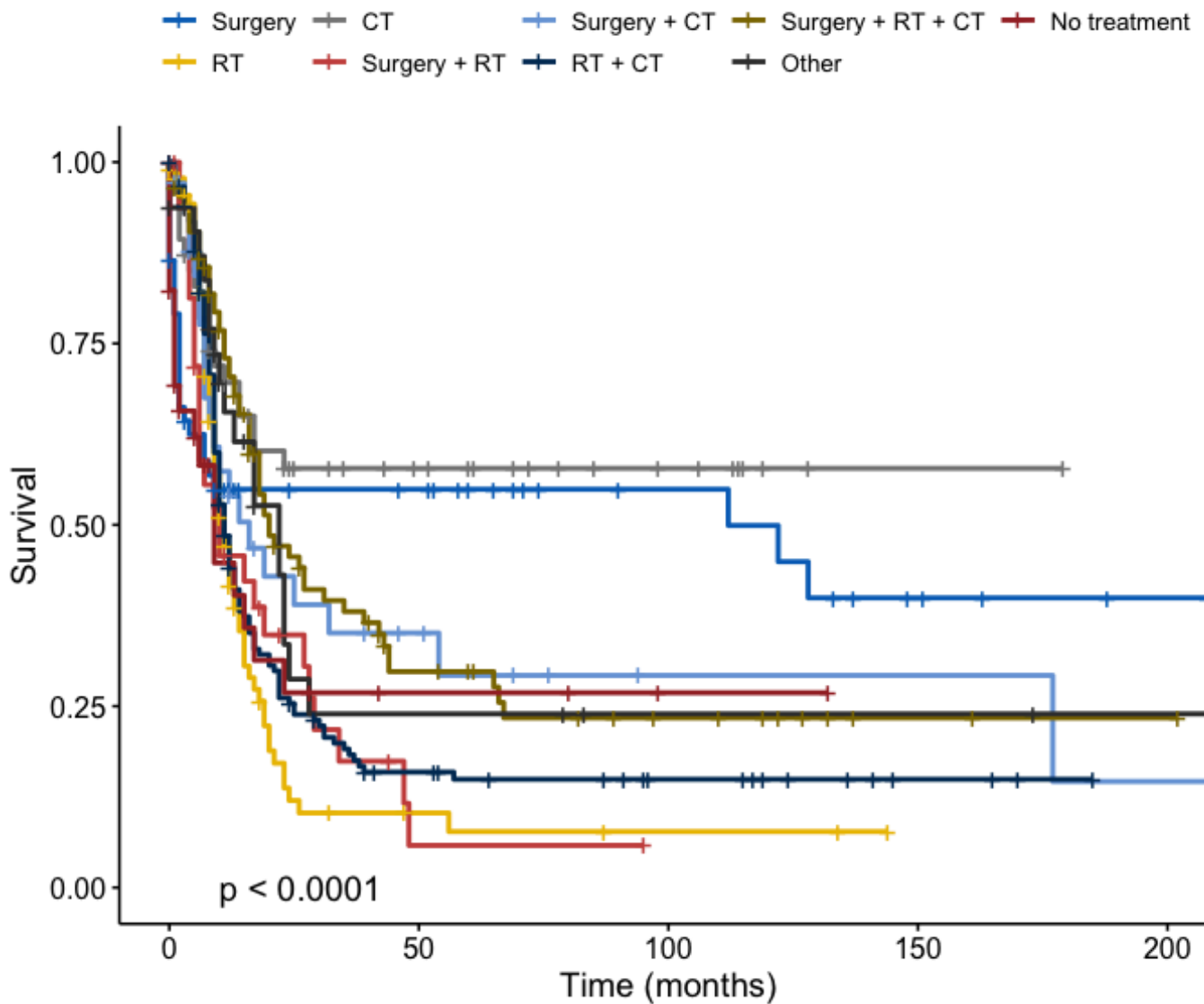


Figure S2. Analysis of the high-grade glioma (grade III and IV) excluding brainstem tumors (n = 570) according to treatment modalities

Note: Regarding the treatment modalities, combined treatments were associated with higher median survival compared to less intensive therapy (surgery: 11 months; surgery and chemotherapy: 16 months; surgery, radiotherapy, and chemotherapy: 20 months; $p = 0.005$)

Table S1. Treatment modalities according to age, histology, grade tumor, tumor site and period

Treatment	Age		Histology / Grade						Period			Tumor site		Overall
	<3 years N (%)	≥3 years N (%)	Pilocytic astrocytoma	Astrocytoma grade II	Astrocytoma grade III	Oligodendrogliom a II	Oligodendroglioma III	Glioblasto ma	2000-2007 N (%)	2007-2014 N (%)	2014-2020 N (%)	Brainstem N (%)	No brainstem N (%)	
Surgery	99 (37.9%)	372 (35.9%)	279 (65.5%)	115 (42.8%)	8 (12.3%)	18 (58.1%)	4 (44.4%)	47 (9.5%)	167 (39.4%)	183 (35.3%)	121 (34.2%)	42 (11.1%)	429 (46.8%)	471 (36.3%)
Radiotherapy (RT)	14 (5.4%) 34 (13.0%)	93 (9.0%)	6 (1.4%)	9 (3.3%)	4 (6.2%)	0 (0%)	0 (0%)	88 (17.7%)	24 (5.7%)	30 (5.8%)	53 (15.0%)	65 (17.2%)	42 (4.6%)	107 (8.3%)
Chemotherapy (CT)	4 (1.5%)	46 (4.4%)	13 (3.1%)	16 (5.9%)	3 (4.6%)	1 (3.2%)	0 (0%)	47 (9.5%)	22 (5.2%)	38 (7.3%)	20 (5.6%)	33 (8.7%)	47 (5.1%)	80 (6.2%)
Surgery + RT	44 (16.9%)	59 (5.7%)	10 (2.3%)	18 (6.7%)	5 (7.7%)	0 (0%)	1 (11.1%)	29 (5.8%)	25 (5.9%)	16 (3.1%)	22 (6.2%)	18 (4.7%)	45 (4.9%)	63 (4.9%)
Surgery + CT	89 (8.6%) 157 (16.9%)	89 (8.6%)	62 (14.6%)	33 (12.3%)	8 (12.3%)	3 (9.7%)	0 (0%)	27 (5.4%)	49 (11.6%)	56 (10.8%)	28 (7.9%)	23 (6.1%)	110 (12.0%)	133 (10.3%)
RT + CT	25 (9.6%)	(15.2%)	8 (1.9%)	24 (8.9%)	11 (16.9%)	1 (3.2%)	0 (0%)	138 (27.8%)	51 (12.0%)	92 (17.8%)	39 (11.0%)	128 (33.8%)	54 (5.9%)	182 (14.0%)
Surgery + RT + CT	19 (7.3%)	(11.5%)	20 (4.7%)	28 (10.4%)	11 (16.9%)	6 (19.4%)	3 (33.3%)	70 (14.1%)	42 (9.9%)	58 (11.2%)	38 (10.7%)	38 (10.0%)	100 (10.9%)	138 (10.6%)
Other	13 (5.0%)	58 (5.6%)	22 (5.2%)	16 (5.9%)	6 (9.2%)	1 (3.2%)	1 (11.1%)	25 (5.0%)	26 (6.1%)	28 (5.4%)	17 (4.8%)	19 (5.0%)	52 (5.7%)	71 (5.5%)
No treatment	9 (3.4%)	42 (4.1%)	6 (1.4%)	10 (3.7%)	9 (13.8%)	1 (3.2%)	0 (0%)	25 (5.0%)	18 (4.2%)	17 (3.3%)	16 (4.5%)	13 (3.4%)	38 (4.1%)	51 (3.9%)