

Supplementary File

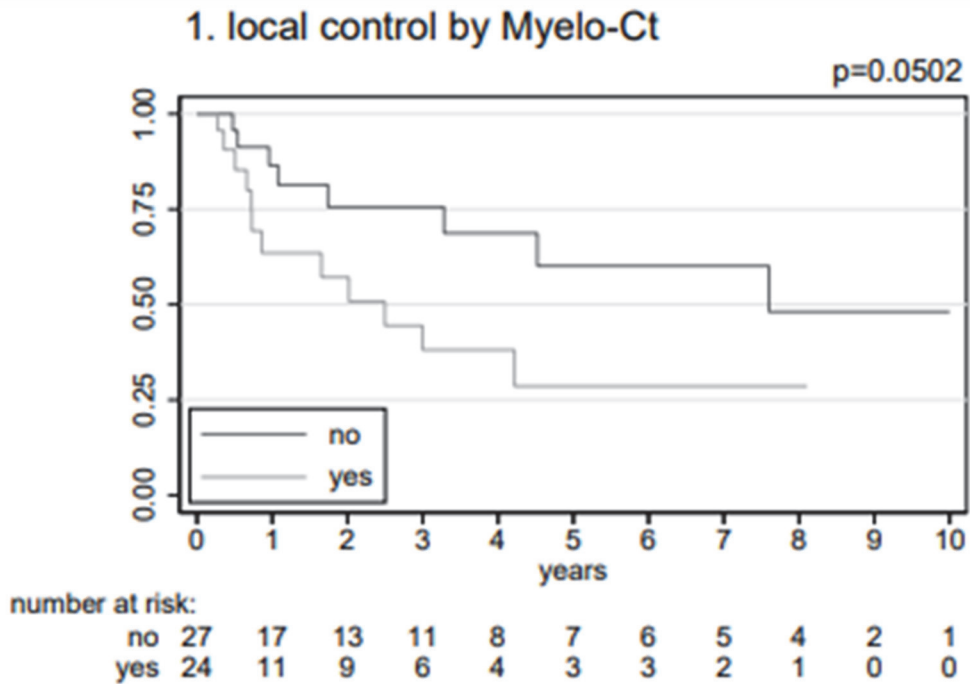


Figure S1. Duration of local control if Myelo-CT was needed for RT planning ($p = 0.0502$)

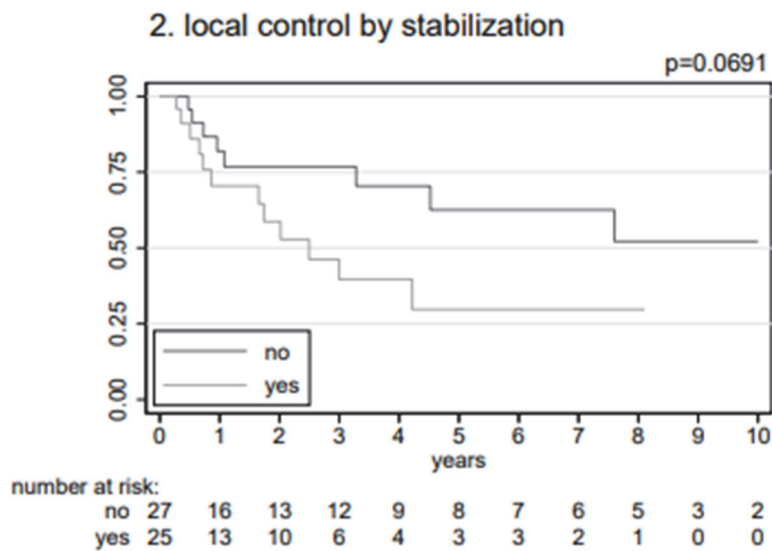


Figure S2. Duration of local control if patients had surgical stabilization before RT including metal artefacts on planning images ($p = 0.0691$)

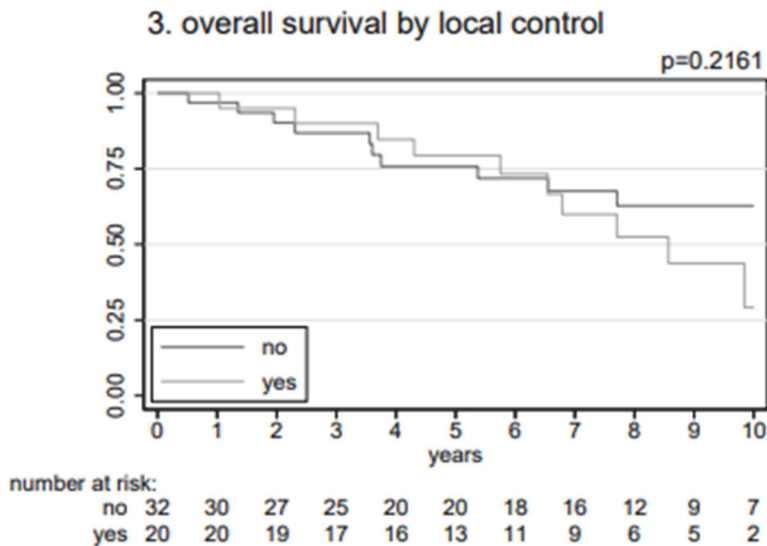


Figure S3. Overall survival by local control: progressive vs. stable disease (p = 0.2161)

Table S1. Histological reports

	All patients	
	N = 57	%
Available reports		
Brain/base of skull	6/15	40.0
Spine/pelvis	14/42	33.3
Immunohistochemistry		
S100 positiv	19	33.3
EMA positiv	12	21.1
CK Pan positiv	11	19.3
Vimentin positiv	6	10.5
MNF116 positiv	2	3.5
CK 8 positiv	3	5.3
Brachury positiv	2	3.5
Grading only for cervical spine		
Dedifferentiated	1	
WHO I	1	