

Supplementary File

The supplementary material includes the details of clinico-pathological characteristics like smoking status, grade and gender in Supplementary Table 1, the representative pictures of RFLP for both SNPs of hTERT in Supplementary File — Figures 1 and 2 and Kaplan Meier survival curves showing correlation of OS and DFS with respect to stage and grade of the BC cases in Supplementary File — Figure 3A–D.

Table S1. Demographic characteristics of bladder cancer patients and healthy controls used for polymorphic analysis of hTERT rs2736098 and rs2736100

Variable	Cases (n = 100)	Controls (n = 200)	p-value	Cases (n = 130)	Controls (n = 200)	p-value
	<i>hTERT</i> rs2736100			<i>hTERT</i> rs2736098		
Age group						
< 50	35 (35%)	75 (37.5%)	$\chi^2 = 0.17$	46 (35.38%)	75 (37.5%)	$\chi^2 = 0.15$
≥ 50	65 (65%)	125 (62.5%)	p = 0.7	84 (64.61%)	125 (62.5%)	p = 0.72
Gender						
Female	21 (21%)	56 (28%)	$\chi^2 = 1.71$	27 (20.76%)	56 (28%)	$\chi^2 = 2.18$
Male	79 (79%)	144 (72%)	p = 0.2	103 (79.23%)	144 (72%)	p = 0.15
Dwelling						
Rural	76 (76%)	135 (67.5%)	$\chi^2 = 2.30$	99 (76.15%)	135 (67.5%)	$\chi^2 = 2.86$
Urban	24 (24%)	65 (32.5%)	p = 0.1	31 (23.84%)	65 (32.5%)	p = 0.10
Smoking status						
Never	33 (33%)	86 (43%)	$\chi^2 = 2.78$	42 (32.30%)	86 (43%)	$\chi^2 = 3.79$
Ever	67 (67%)	114 (57%)	p = 0.1	88 (67.69%)	114 (57%)	p = 0.06
Histological type						
GI/GII	51 (51)			72 (55.38)		
GIII/GIV	49 (49)			58 (44.61)		
Tumor stage						
pTa/pT1	59 (59)			75 (57.69)		
pT2/higher	41 (41)			55 (42.30)		

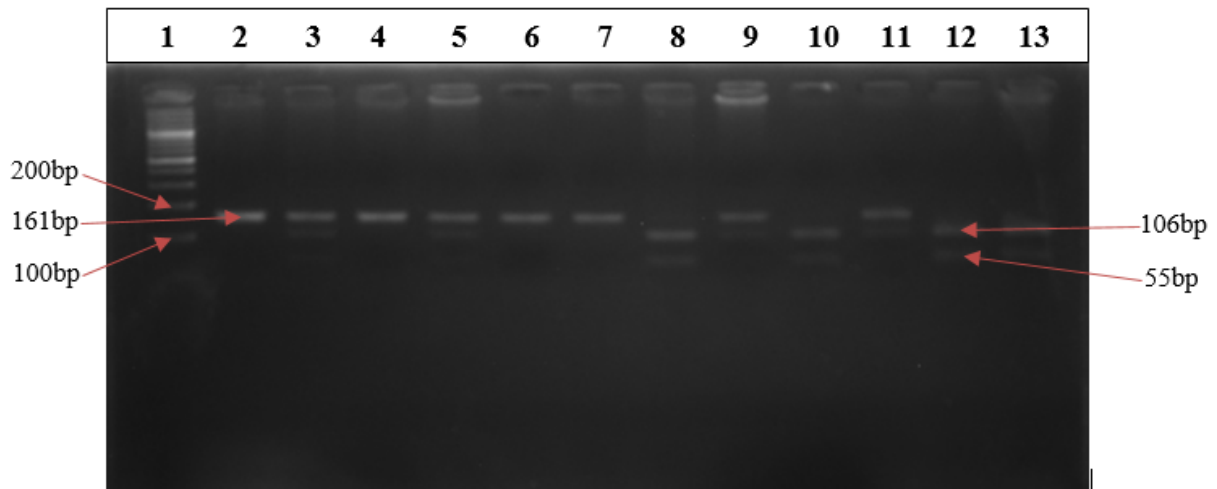


Figure S1, PCR amplified product hTERT rs2736100 (161 bp) fragment. Digestion of PCR product by *SfiI*. Homozygous *CC* allele (106bp and 55bp) are shown in well 5,6,8,10,13; the *CA* heterozygous (161 bp, 106 bp and 55 bp) in well 3,4,9,11,12; and homozygous *AA* variant (161bp) shown in well 2,7 ; Lane 1 is 100 bp ladder.

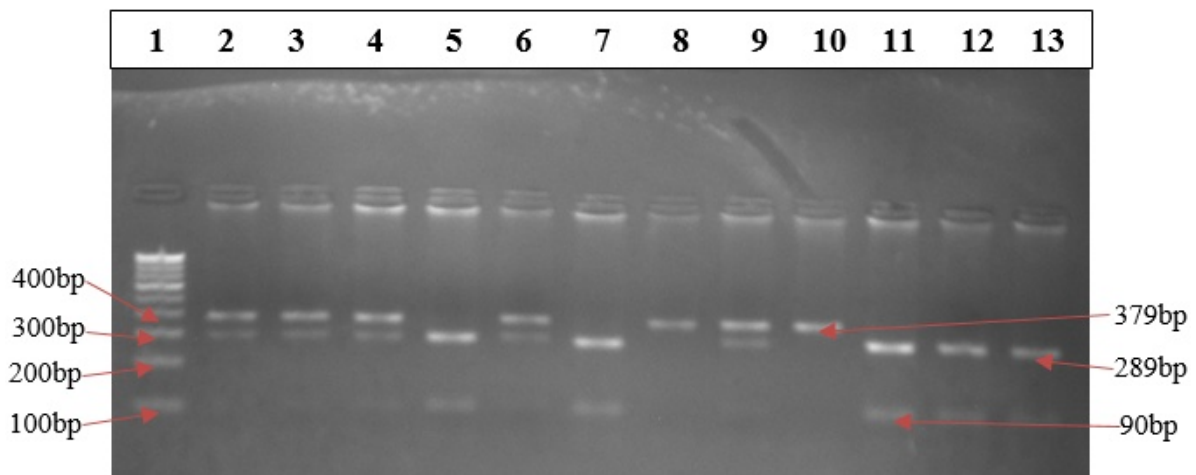
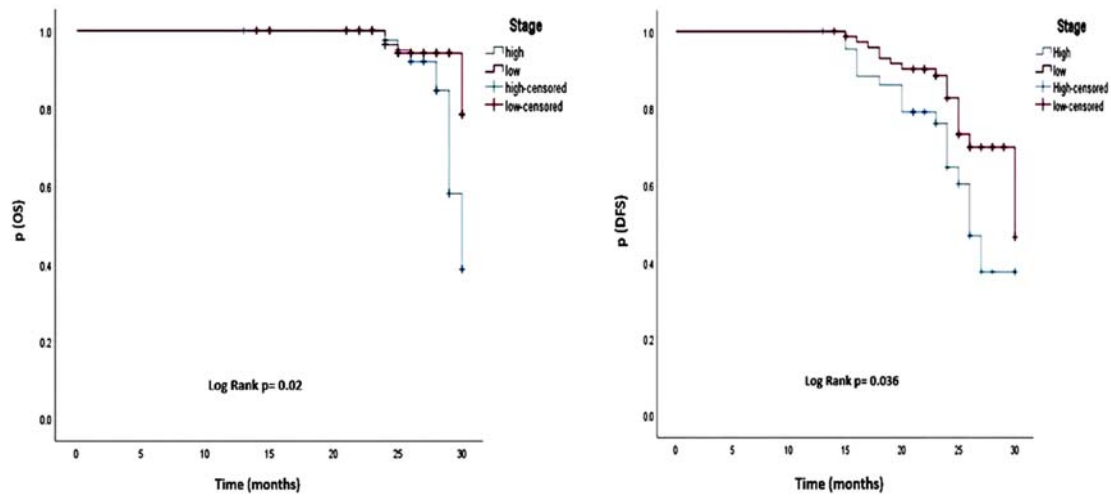
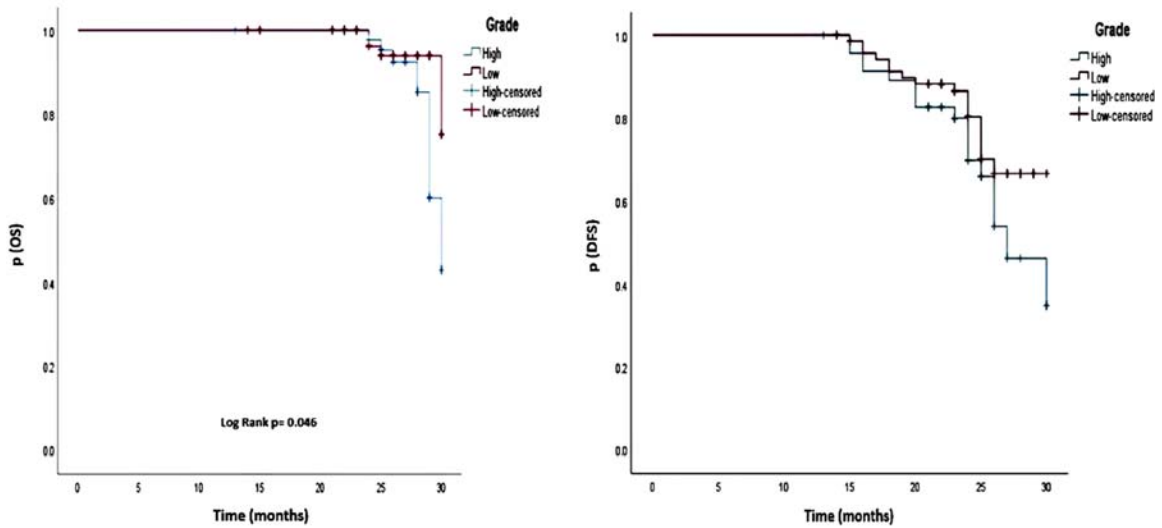


Figure S2. PCR amplified product hTERT rs2736098 (379 bp) fragment. Digestion of PCR product by *PspOmI*. Homozygous *GG* allele (289 bp and 90bp) in well 5,7,11,12,13; the *GA* heterozygous (379 bp, 289 bp and 90 bp) in well 2,3,4,6,9; and homozygous *AA* variant (379 bp) shown in well 8,10; Lane 1 is 100 bp ladder.



A

B



C

D

Figure 3A–D. Kaplan Meier survival curves showing correlation of overall survival (OS) and disease-free survival (DFS) with respect to stage and grade of the bladder cancer cases