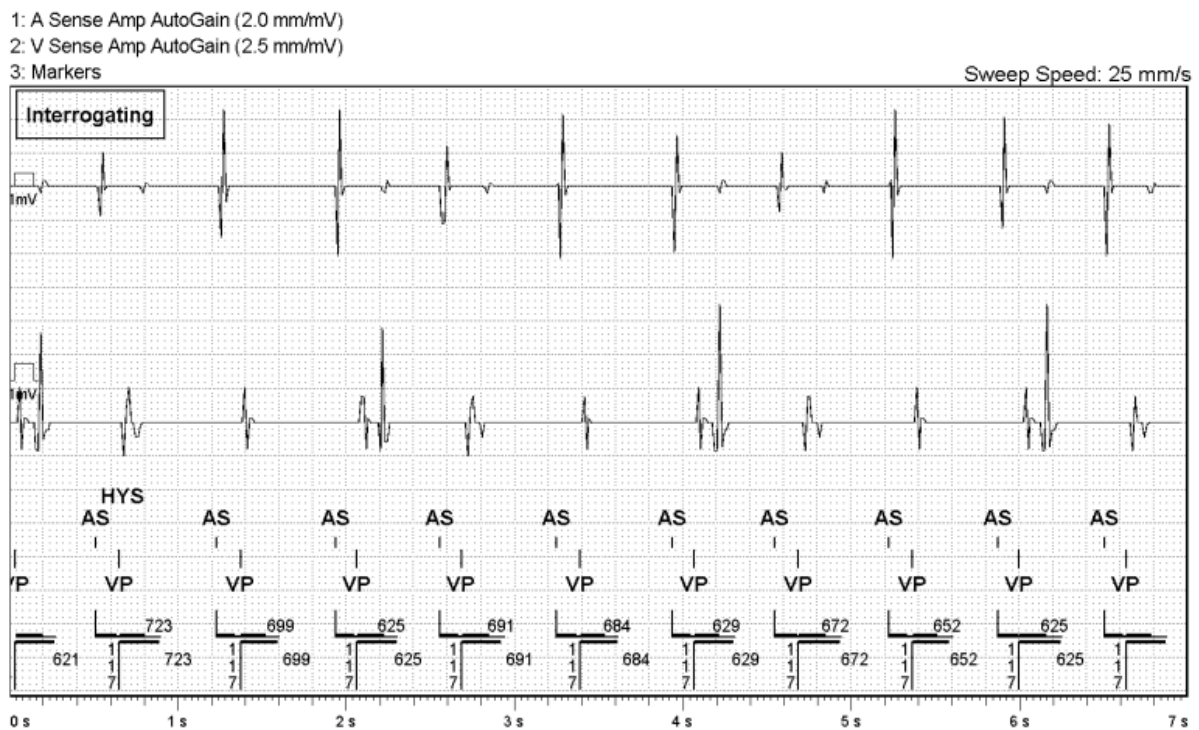


Supplementary material

Kowal D, Baszko A, Czyż K, et al. Pacemaker remote monitoring challenges in pediatric population: Single center long-term experience. Pol Heart J. 2024.

Please note that the journal is not responsible for the scientific accuracy or functionality of any supplementary material submitted by the authors. Any queries (except missing content) should be detected to the corresponding author of the article.



Unknown @ 0.4 ms (Bi) **A**
1.0 V @ 0.4 ms (Bi)

24 Nov 2023
24 Aug 2023

AutoCapture Trend

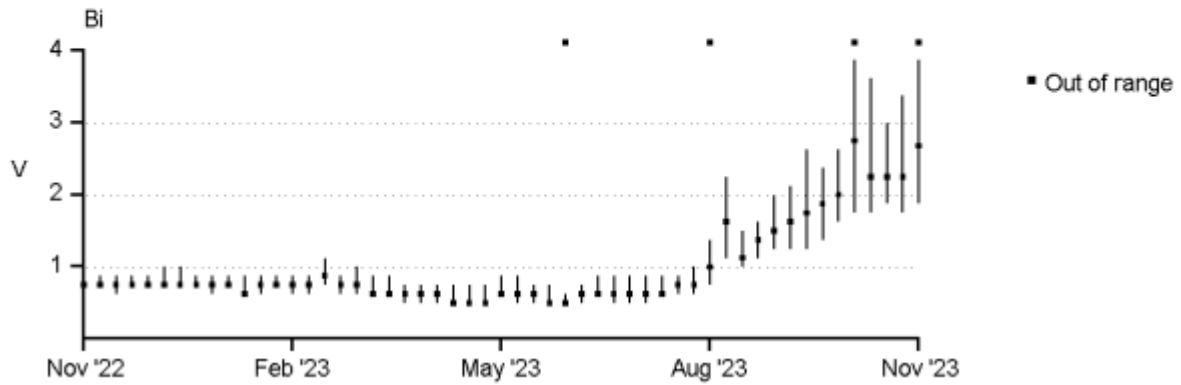


Figure S1. Intermittent loss of capture with ventricular escape rhythm due to elevated pacing threshold. Data collected *via* remote alert-based transmission