

Supplementary material

Farkowski MF, Ciszewski J, Maciąg A, et al. A pilot study of high density mapping of left atrial scarring in patients with a history of cancer treatment undergoing ablation of arrhythmia: The Pilot OncoLA Study. Pol Heart J. 2024.

Please note that the journal is not responsible for the scientific accuracy or functionality of any supplementary material submitted by the authors. Any queries (except missing content) should be directed to the corresponding author of the article.

Table S1. Baseline characteristics of the study group (n = 14)

Age, years	63 (11)
Male sex	9 (69%)
Comorbidities	
Heart failure ^a	6 (43%)
Coronary artery disease	2 (14%)
Hypertension	9 (64%)
Diabetes	2 (14%)
Chronic kidney disease	1 (7%)
Stroke/TIA	0
Sick sinus syndrome	3 (21%)
NT-proBNP	554 (186-721)
CHA ₂ DS ₂ -VASc score	2 (1-3)
ECHO	
LV ejection fraction	55% (12)
LA area	24 cm ² (5)

^aOnly two patients had a heart failure with reduced ejection fraction

Abbreviations: LA, left atrium; LV, left ventricle; NT-proBNP, N-terminal pro-B-type natriuretic peptide; TIA, transient ischemic attack

Table S2. Details of chemotherapy, immunotherapy and radiotherapy of enrolled patients

	Diagnosis	Chemotherapy	Immunotherapy	Radiotherapy
1	Multiple myeloma	VTD, melphalan		

2	Hodgkin's lymphoma "bulky tumor"	BEACOPP, ESHAP		Mediastinum, 30 Gy
3	Colorectal cancer	5-FU	levamisole	
4	Follicular lymphoma with transformation to DLBCL	CHOP	rituximab	
5	Breast cancer			Right breast, 42.5 Gy, booster 15 Gy
6	Breast cancer	Unclear ^a		Unclear*
7	Multiple myeloma	lenalidomide, dexamethasone	isatuximab	Neck C3-7, 44 Gy
8	Breast cancer	Unclear*		Unclear*
9	Hodgkin's lymphoma "bulky tumor"	ABVD		Mediastinum, 36 Gy
10	Mantle cell lymphoma	bendamustine	rituximab	
11	Anaplastic large cell lymphoma	CHOP		
12	Small cell lung cancer	topotecan		Chest, 42 Gy
13	Breast cancer	carboplatin, docetaxel	trastuzumab	Left breast, 45 Gy, lymph nodes 54 Gy
14	Seminoma	BEP		

^aEvidence of chemo- or radiotherapy in medical records but no detailed data available

Abbreviations: 5-FU, 5-fluorouracil; ABVD, doxorubicin, bleomycin, vinblastine and dacarbazine; BEACOPP, bleomycin, etoposide, doxorubicin, cyclophosphamide, vincristine, procarbazine prednisolone; BEP, bleomycin, etoposide, cisplatin; DLBCL, diffuse large B-cell lymphoma; ESHAP, etoposide, methylprednisolone, high dose cytarabine; cisplatin; N/A, no detailed data available; CHOP, cyclophosphamide, doxorubicin, vincristine, prednisolone; VTD, bortezomib, thalidomide, dexamethasone

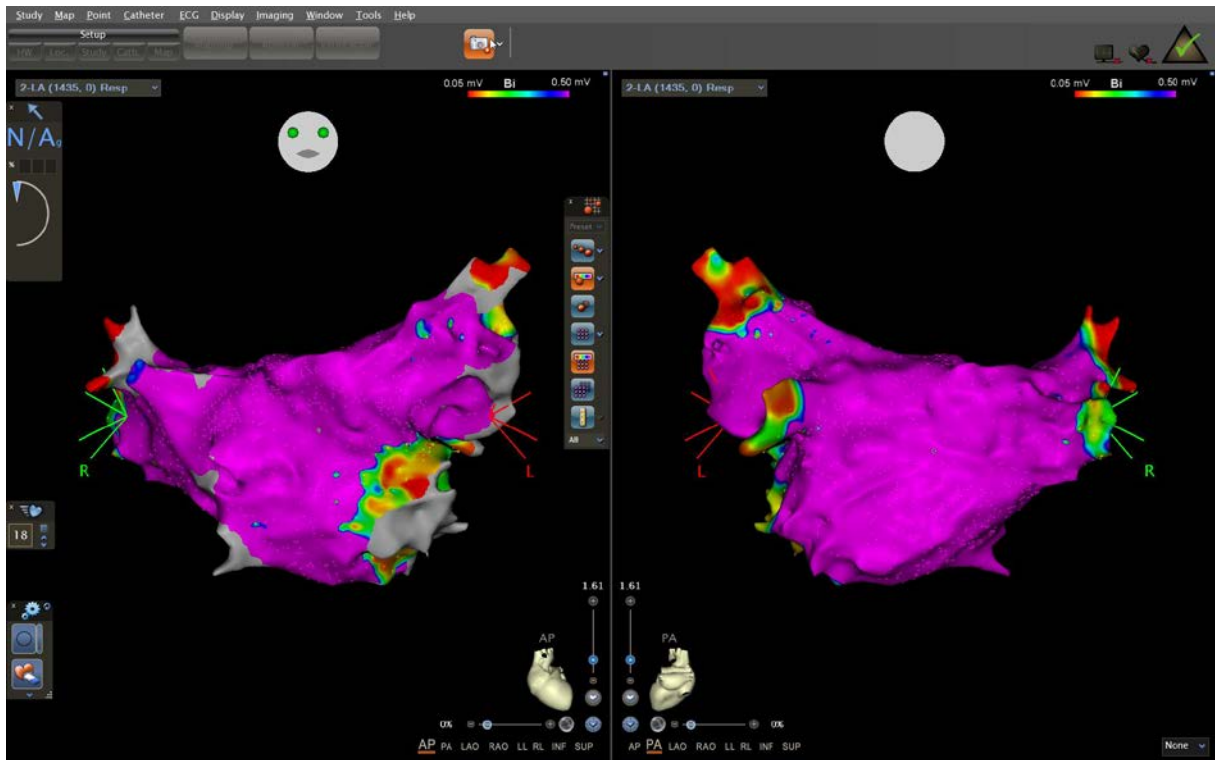


Figure S1. Anterior and posterior view of a healthy left atrium (purple color)

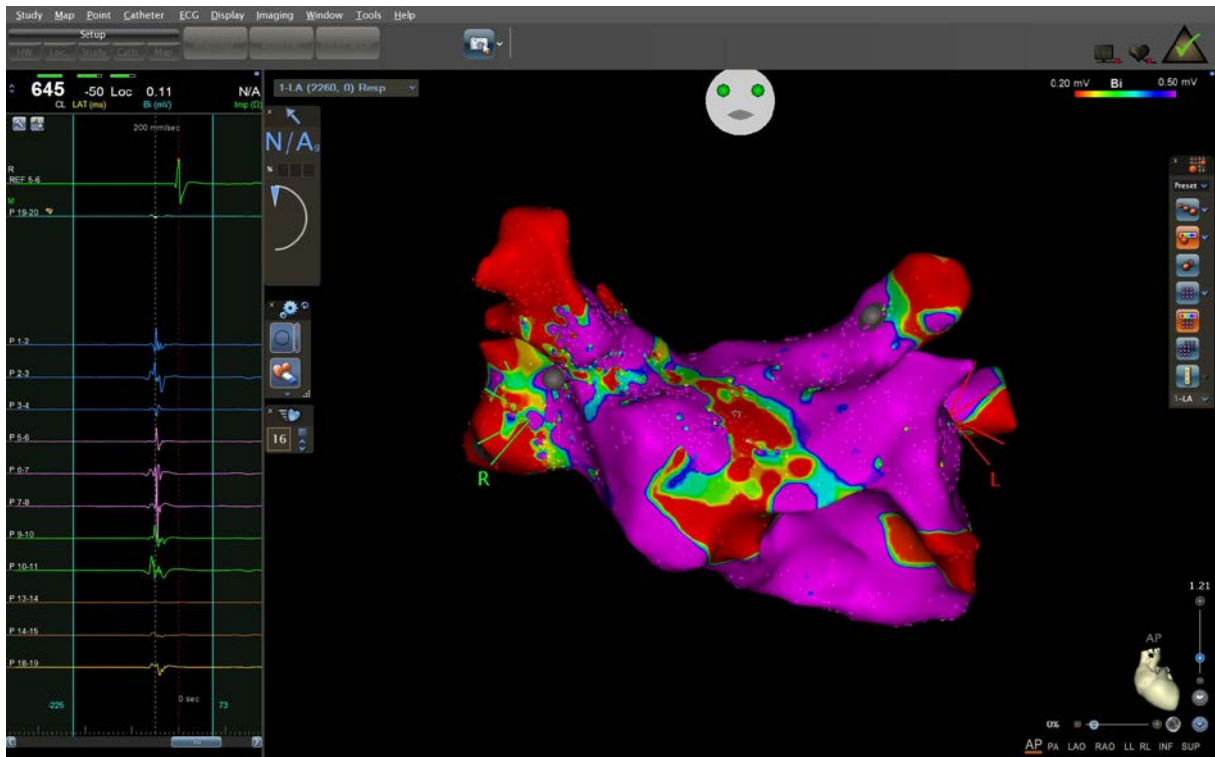


Figure S2. Anterior scar of the left atrium (colors other than purple) and fractionated potentials registered within the scar