

## Supplementary material

*Ptak P, Kędziora A, Pieniżek P, et al. Hybrid one day approach in multisite atherosclerosis and coronary artery disease: Case report. Pol Heart J. 2024.*

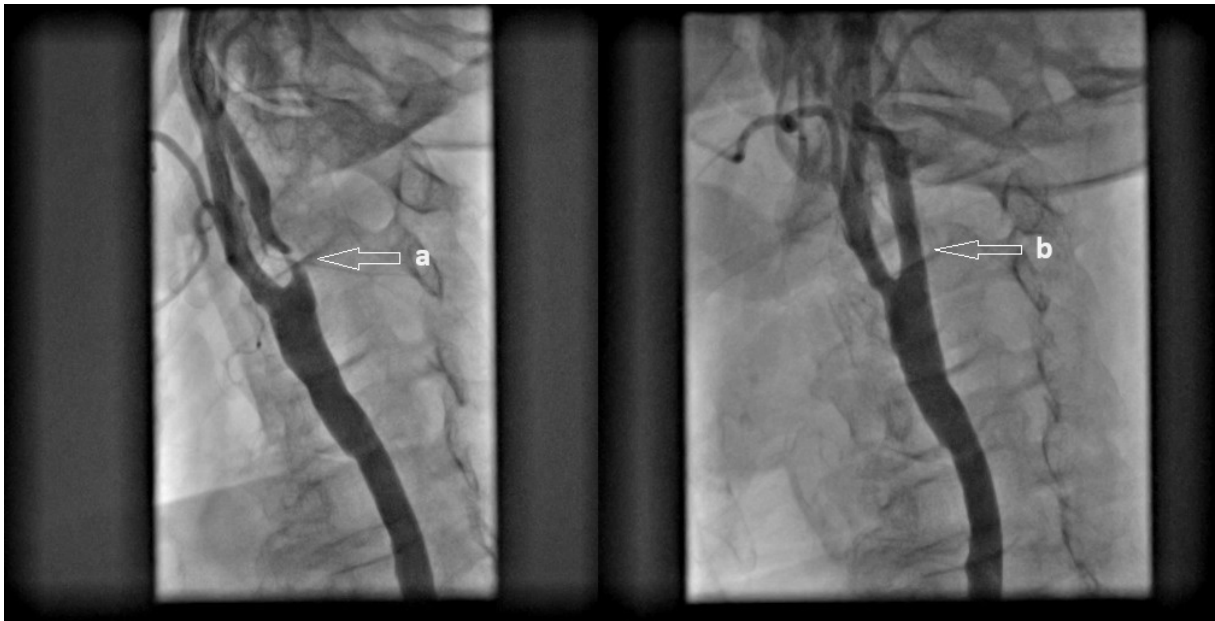
Please note that the journal is not responsible for the scientific accuracy or functionality of any supplementary material submitted by the authors. Any queries (except missing content) should be directed to the corresponding author of the article.

**Table S1.** Detailed information concerning concomitant diseases.

|                                |   |
|--------------------------------|---|
| <b>Coronary artery disease</b> | No myocardial infarction in past history<br>EF = 60% before surgery<br>No history of PTCA<br>FFR LAD — 0.55<br>FFR OM — 0.53<br>Total occlusion of right coronary artery in the middle part, restored blood flow in the distal part from LAD and OM                                     |
| <b>LEAD</b>                    | Total occlusion of Right Common Iliac Artery and Right External Iliac Artery, with restored blood flow in Right Common Femoral Artery from smaller collaterals<br>PTA with stent implantation of Right Superficial Femoral Artery and Left Common Iliac Artery<br>Rutherford category 3 |
| <b>Diabetes</b>                | Type 2 on oral hypoglycemic medications<br>Well maintained — HbA1C — 6.8%   |

|                   |  |
|-------------------|--|
| <b>Nicotinism</b> | Over 30 years pack-years, Decreased spirometry results |
|-------------------|--|

Abbreviations: EF, ejection fraction; FFR, fractional flow reserve; LAD, left anterior descending branch; OM, obtuse marginal branch; PTA, percutaneous transluminal angioplasty; PTCA, percutaneous transluminal coronary angioplasty



**Figure S1.** Angiography of left internal carotid artery before (a) and after stent implantation (b)



**Figure S2.** Angiography of left subclavian artery before (a) and after stent implantation (b)