

Supplementary material

Tajstra M, Bryniarski L, Bujak K, et al. Impact of chronic total occlusion on prognosis in cardiogenic shock due to unprotected left main coronary artery culprit lesion. Insights from the Polish registry of acute coronary syndromes. Pol Heart J. 2024.

Please note that the journal is not responsible for the scientific accuracy or functionality of any supplementary material submitted by the authors. Any queries (except missing content) should be directed to the corresponding author of the article.

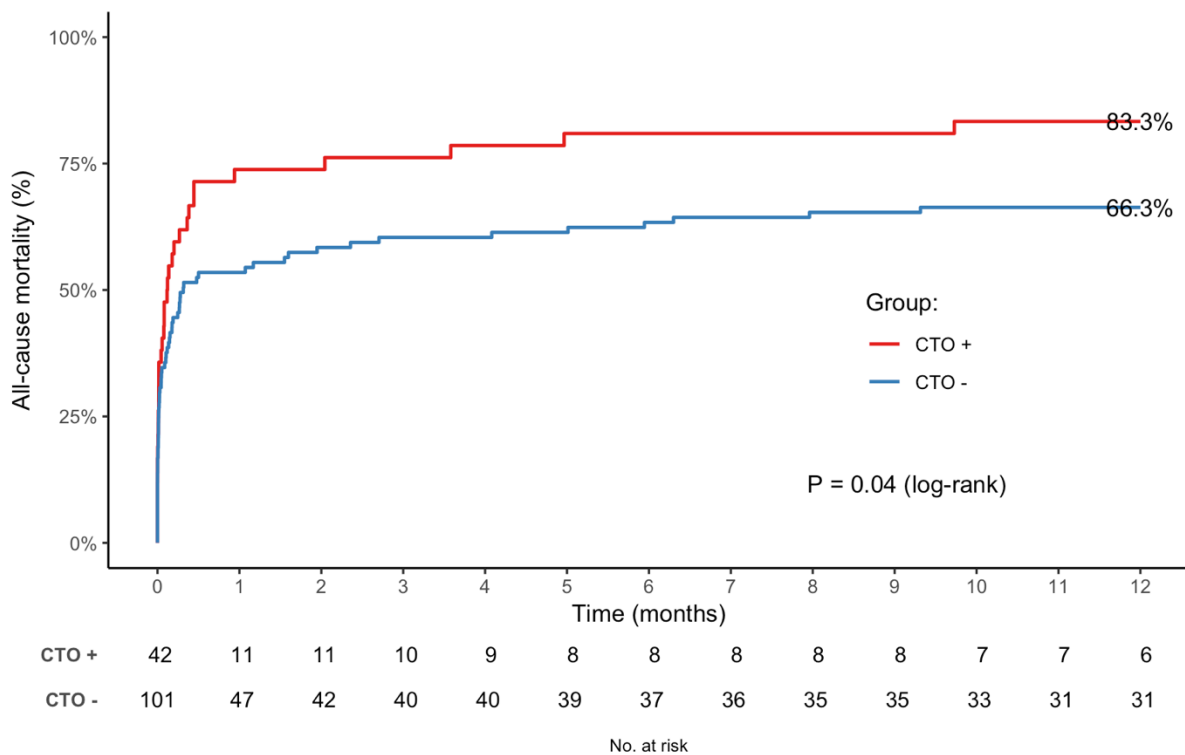
Table S1. Factors associated with all-cause mortality at one year — the univariable Cox regression analysis results

| Variable | n | HR | 95% CI | P-value |
|---|-----|------|-----------|---------|
| Sex, male | 249 | 0.85 | 0.61–1.18 | 0.3 |
| Age (per 1 year increase) | 249 | 1.02 | 1.01–1.04 | 0.001 |
| Current smoker | 184 | 0.79 | 0.54–1.15 | 0.2 |
| Hypertension | 222 | 1.05 | 0.76–1.44 | 0.8 |
| Hypercholesterolemia | 198 | 0.79 | 0.55–1.12 | 0.2 |
| Diabetes | 224 | 1.13 | 0.81–1.56 | 0.5 |
| Obesity | 230 | 1.63 | 1.14–2.34 | 0.01 |
| Previous myocardial infarction | 241 | 0.93 | 0.66–1.32 | 0.7 |
| Previous percutaneous coronary intervention | 245 | 0.91 | 0.63–1.31 | 0.6 |
| Peripheral vascular disease | 242 | 1.50 | 1.01–2.23 | 0.04 |
| Atrial fibrillation | 242 | 0.62 | 0.38–1.00 | 0.052 |
| Previous history of heart failure | 238 | 0.87 | 0.57–1.33 | 0.5 |
| Previous stroke | 247 | 2.14 | 1.34–3.42 | 0.001 |
| Chronic kidney disease | 242 | 1.81 | 1.21–2.72 | 0.004 |
| Chronic obstructive pulmonary disease | 238 | 0.80 | 0.43–1.46 | 0.5 |
| Malignancy | 240 | 0.96 | 0.45–2.05 | >0.9 |
| Cardiac arrest before admission | 248 | 1.23 | 0.91–1.68 | 0.2 |
| ST-elevation myocardial infarction | 249 | 1.03 | 0.77–1.38 | 0.9 |

| | | | | |
|---------------------------------------|-----|------|-----------|------|
| Systolic blood pressure on admission | 241 | 1.00 | 0.99–1.00 | 0.08 |
| Diastolic blood pressure on admission | 231 | 1.00 | 0.99–1.00 | 0.3 |
| Heart rate on admission | 246 | 1.00 | 0.99–1.00 | 0.7 |
| Chronic total occlusion | 249 | 1.44 | 1.04–2.00 | 0.03 |

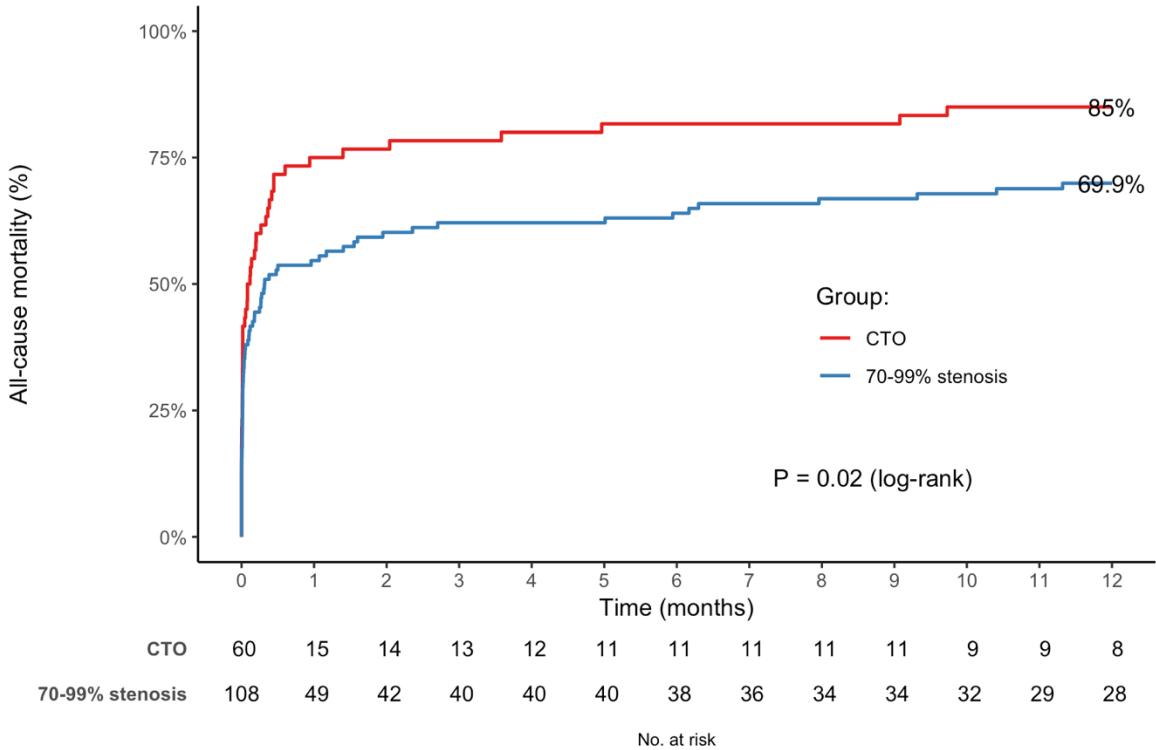
Abbreviations: CI, confidence interval; HR, hazard ratio;

Figure S1. The incidence of all-cause 12-month mortality in the subgroup of patients who underwent non-culprit vessel percutaneous coronary intervention during the index admission



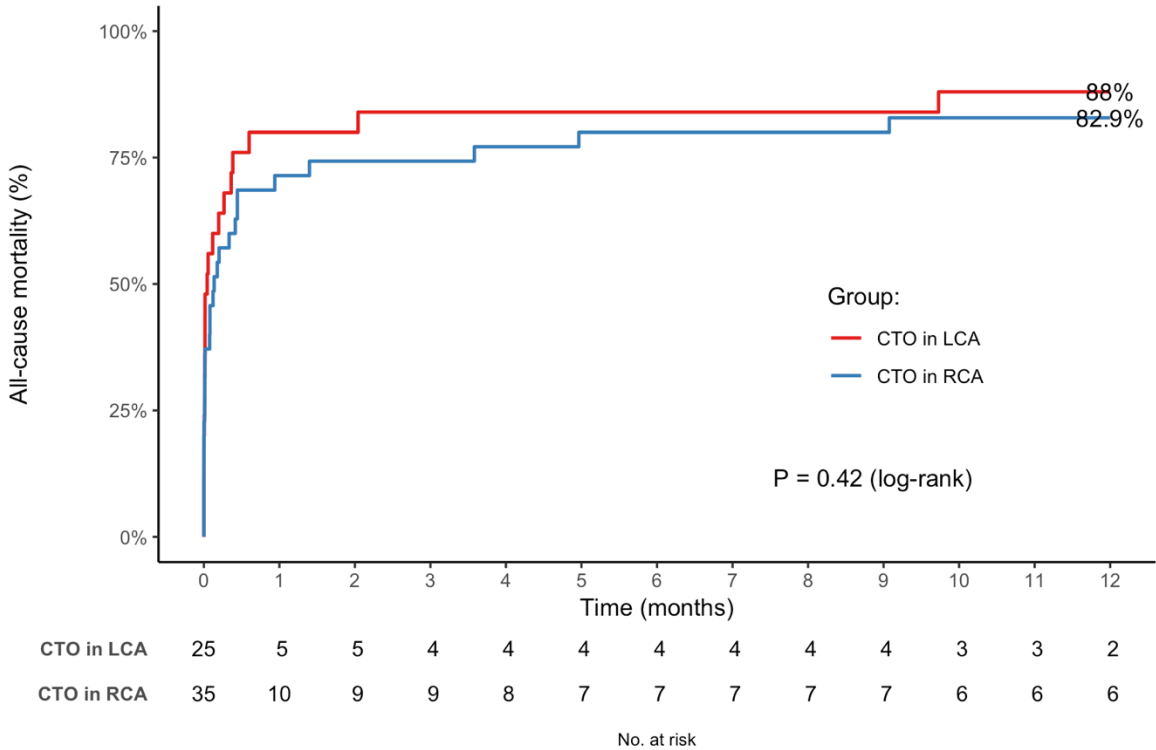
Abbreviation: CTO, chronic total occlusion

Figure S2. The comparison of 12-month all-cause mortality between patients with chronic total occlusion vs. 70%–99% stenosis in the non-culprit vessel



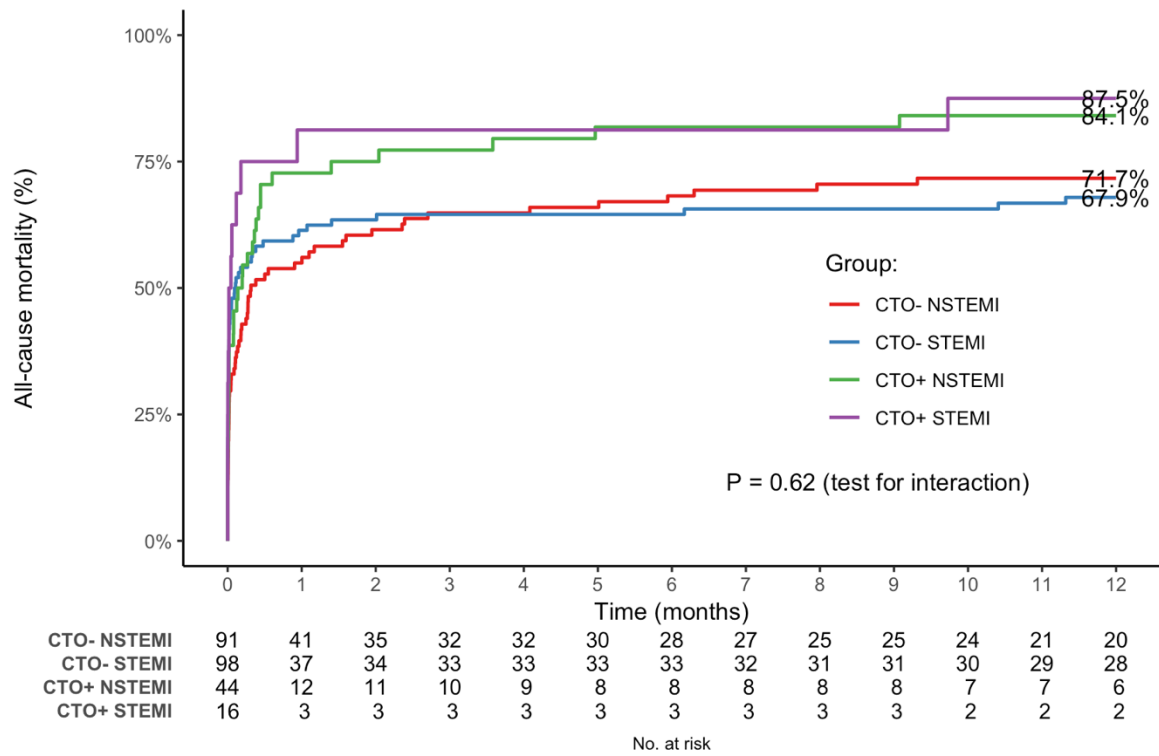
Abbreviation: CTO, chronic total occlusion

Figure S3. The 12-month all-cause mortality in patients stratified by the location of CTO (right vs. left coronary artery)



Abbreviations: CTO, chronic total occlusion; LCA, left coronary artery; RCA, right coronary artery

Figure S4. Kaplan–Meier curves presenting the incidence of 12-month all-cause mortality in groups stratified by the presence of CTO and myocardial infarction classification



Abbreviations: CTO, chronic total occlusion; NSTEMI, non-ST elevation myocardial infarction; STEMI, ST-elevation myocardial infarction