

Supplementary material

Książczyk M, Wcisło T, Warchol I, et al. Inferior ST-segment elevation myocardial infarction and intramyocardial dissecting hematoma following blunt chest trauma. Kardiologia Polska. 2023.

Please note that the journal is not responsible for the scientific accuracy or functionality of any supplementary material submitted by the authors. Any queries (except missing content) should be directed to the corresponding author of the article.



Figure S1. Valvular, basal and mid short axis cardiac computed tomography angiography showed intramyocardial dissecting hematoma (asterisk) in the inferolateral wall with no communication between left ventricle cavity or pericardium

Abbreviations: A, anterior leaflet of mitral valve; LV, left ventricle; MV, mitral valve; P, posterior leaflet of mitral valve; PM, papillary muscle; RV, right ventricle

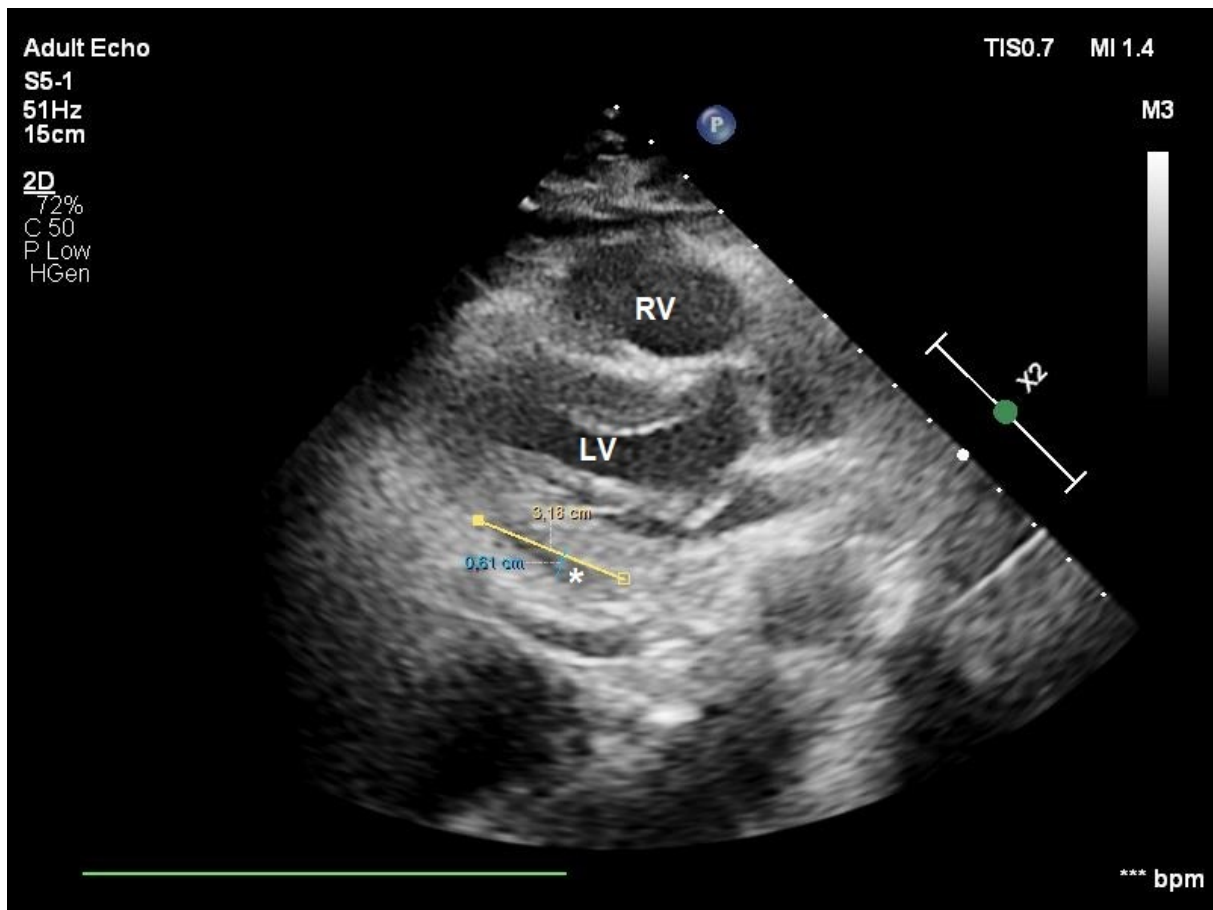


Figure S2. Transthoracic echocardiography, parasternal long axis showing intramyocardial dissecting hematoma (asterisk) 2 weeks after percutaneous coronary intervention, dimeters: 32 × 6 mm

Abbreviations: see Figure S1