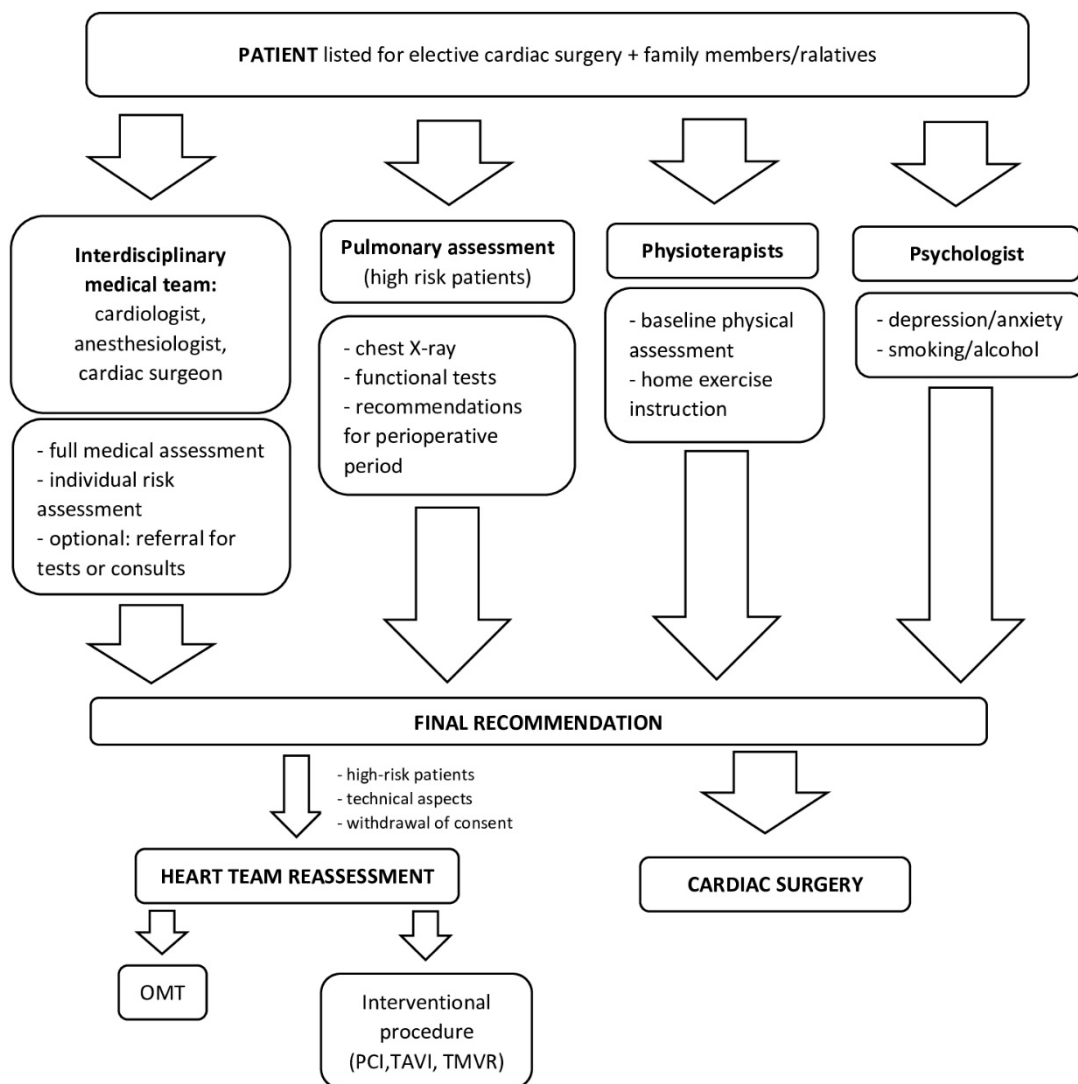


## Supplementary material

*Sobczyk D, Hymczak H, Batycka-Stachnik D et al. Is Heart Team enough? The role of interdisciplinary preoperative patient health check in the final qualification for elective cardiac surgery: Pre Surgery Check Team Study. Kardiol Pol. 2023.*

Please note that the journal is not responsible for the scientific accuracy or functionality of any supplementary material submitted by the authors. Any queries (except missing content) should be directed to the corresponding author of the article.



List of abbreviations: OMT – optimal medical therapy, PCI – percutaneous coronary intervention, TAVI – transcatheter aortic valve implantation, TMVR – transcatheter mitral valve repair

**Figure S1.** Flowchart of Pre Surgery Check Team Organization

**Table S1.** Clinical comparison of the two study groups: patients finally listed for cardiac surgery (group 1) and they disqualified from surgery (group 2).

Characteristic	Group 1 N=367 pts	Group 2 N= 84 pts	p value
Age (yrs) (mean, SD)	64.63 (9.33)	73.48 (5.6)	0.1
Age > 65 yrs (N, %)	262 (71.39)	60 (71.43)	0.6
CFS score $\geq$ 5 (N, %)	15 (4.09)	37 (44.05)	0.05
BMI (kg/m <sup>2</sup> ) (mean, SD)	28.14 (4.3)	29.98 (5.32)	0.6
LVEF (%) (mean, SD)	54.64 (10.1)	50.95 (11.06)	0.5
Arterial hypertension (N, %)	232 (63.22)	54 (64.29)	0.5
COPD/asthma (N, %)	49 (13.35)	11 (13.1)	0.6
Diabetes and IGT (N, %)	153 (41.69)	40 (47.62)	0.2
CKD $\geq$ stage 3a (N, %)	24 (6.54)	22 (26.2)	0.06
Anaemia (N, %)	25 (6.81)	24 (28.57)	0.06
Paroxysmal/chronic AF (N, %)	70 (19.07)	22 (26.19)	0.5
Atherosclerosis of carotid arteries/PAD (N, %)	28 (7.63)	11 (13.1)	0.46
Previous stroke (N, %)	21 (5.72)	11 (13.1)	0.2
Active smoking (N, %)	42 (11.44)	7 (8.33)	0.2

List of abbreviations: AF – atrial fibrillation, BMI – Body Mass Index, CKD – chronic kidney disease, CSF – Clinical Frailty Score, COPD – chronic obstructive pulmonary disease, IGT – impaired glucose tolerance, LVEF – left ventricular ejection fraction, PAD – peripheral arteries diseases