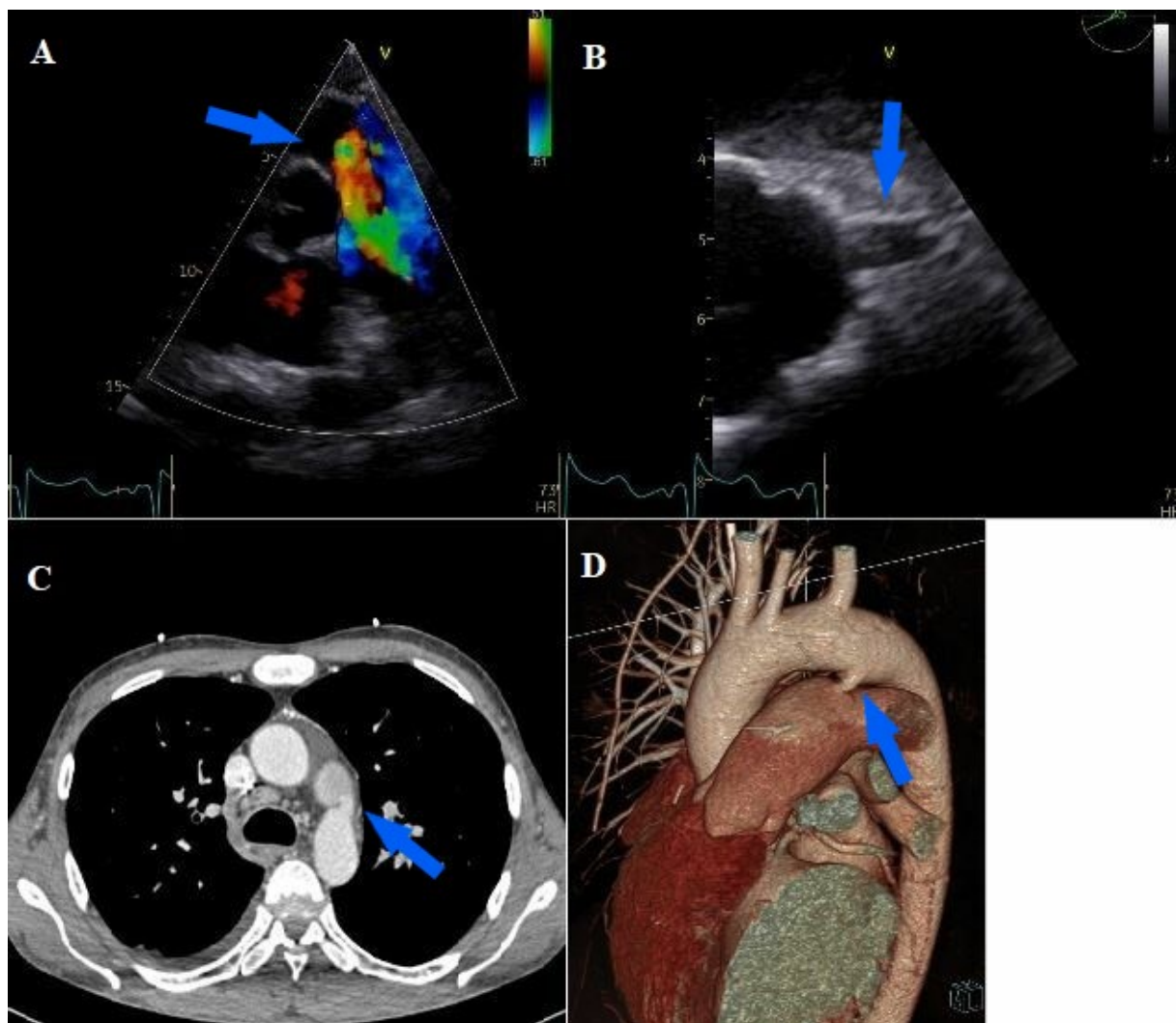


## Supplementary material

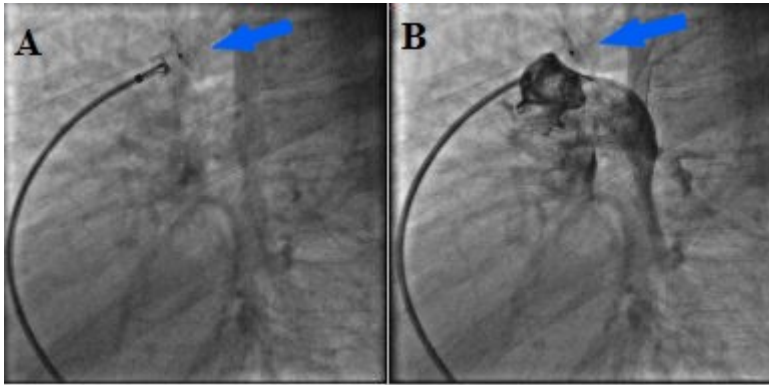
*Kaczmarek D, Matuszewska-Brycht O, Piestrzeniewicz K, et al. Patent ductus arteriosus: Generally an anomaly of childhood, but is it always? Clinical implications in an adult patient. Kardiol Pol. 2023.*

Please note that the journal is not responsible for the scientific accuracy or functionality of any supplementary material submitted by the authors. Any queries (except missing content) should be directed to the corresponding author of the article.



**Figure S1.** **A.** Transthoracic echocardiography color Doppler: blood flow from the aorta to the pulmonary trunk. **B.** PDA visible in transesophageal echocardiography. **C.** PDA in CT angiography. **D.** PDA in CT angiography 3D reconstruction

Abbreviations: ECG, electrocardiogram; PDA, patent ductus arteriosus; CT, computed tomography



**Figure S2.** Percutaneous closure of the PDA with device Amplatzer Duct Occluder 10 mm  
Abbreviations: see *Figure S2*