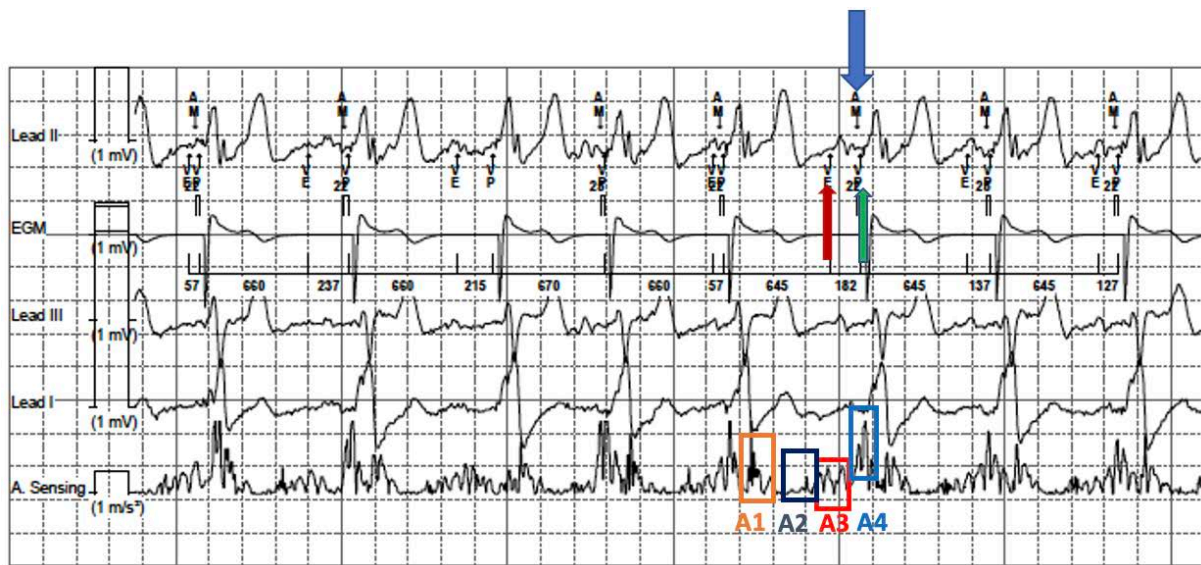


## Supplementary material

*Katarzyńska-Szymańska A, Chmielewska-Michalak L, Grymuza M, et al. Effectiveness of atrioventricular synchrony in patient with Micra AV after the first implantation in middle-eastern Europe. Kardiol Pol. 2022.*

Please note that the journal is not responsible for the scientific accuracy or functionality of any supplementary material submitted by the authors. Any queries (except missing content) should be directed to the corresponding author of the article.



**Figure S1.** The driving mechanism of atrioventricular synchronization in MicraAV demonstrated on the programmer strip. The accelerometer analyses four signals: A1 signal correlates with atrio-ventricular valve closure, A2 signal — aortic and pulmonic valve closure, A3 signal — passive phase of ventricular filling (less sensitive window). Those three signals appear during the ventricular activity. The end of this period is denoted as VE (ventricular end) and marked as red arrow on the programmer strip. Finally, A4 signal corresponds to atrial contraction that triggers ventricular pacing (VP marked as green arrow), (more sensitive window). Atrial mechanical activity is denoted by AM (blue arrow)