

Supplementary material

Pasierski M, Czarnecka K, Staromłyński J, et al. Total arterial revascularization coronary artery bypass surgery in patients with atrial fibrillation. Kardiol Pol. 2022.

Please note that the journal is not responsible for the scientific accuracy or functionality of any supplementary material submitted by the authors. Any queries (except missing content) should be directed to the corresponding author of the article.

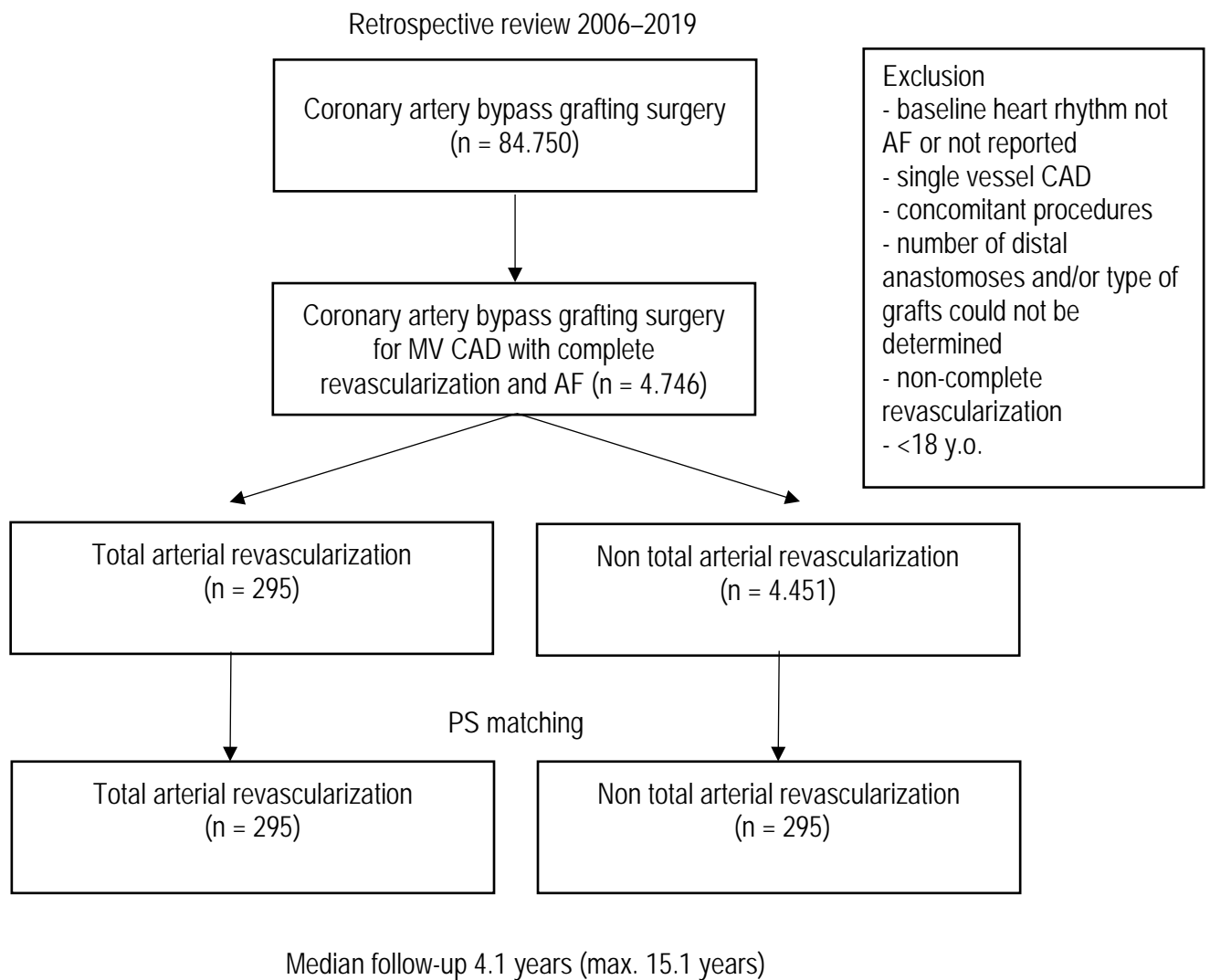


Figure S1. Study flow-chart

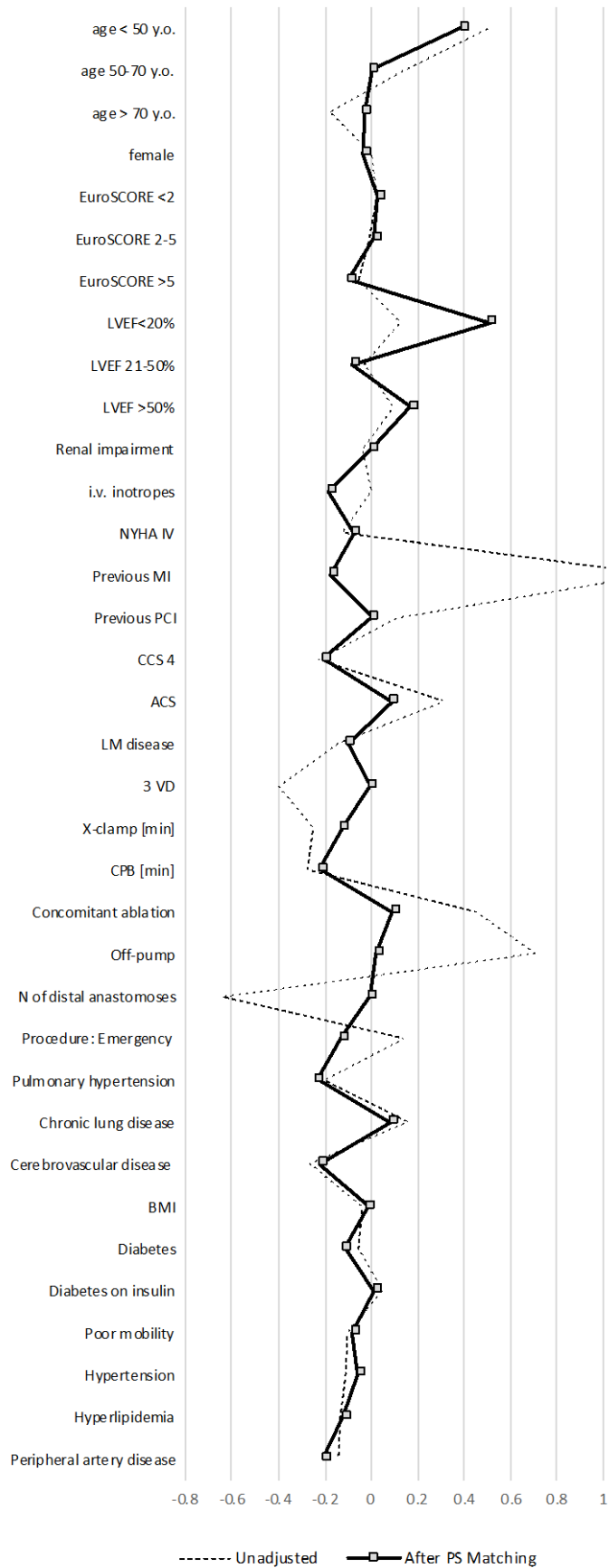


Figure S2. SMDs between TAR and non-TAR before and after PS matching

Table S1. Preoperative characteristics before and after PS-matching

Variable	All patients			P-value
	Total (4746)	Non TAR (4451)	TAR (295)	
<i>Baseline characteristics</i>				
Age years, median (IQR)	69 (63–75)	70 (63–75)	68 (62–74)	<0.001
Male gender	3669 (77.3%)	3,441 (77.3%)	228 (77.3%)	>0.99
EuroSCORE, median (IQR)	1.32 (0.87–2.32)	1.32 (0.87–2.32)	1.31(0.83–2.33)	0.02
Diabetes	1969 (41.5%)	1853 (41.6%)	116 (39.3%)	0.46
Insulin ± oral hypoglycemic drugs	782 (16.5%)	730 (16.4%)	52 (17.6%)	0.57
Smoking	2927 (61.7%)	2732 (61.4%)	195 (66.1%)	0.11
Hypertension	4299 (90.6%)	4037 (90.7%)	262 (88.8%)	0.30
Hyperlipidemia	3134 (66.0%)	2955 (66.4%)	179 (60.7%)	0.049
Poor mobility^a	246 (5.2%)	233 (5.2%)	13 (4.4%)	0.68
BMI (median [IQR])	28.40 (25.71–31.40)	28.39 (25.71–31.44)	28.72 (26.26–30.58)	0.70
Pulmonary hypertension*	225 (4.7%)	215 (4.8%)	10 (3.4%)	0.32
Severe (PA systolic >55 mmHg)*	18 (0.4%)	18 (0.4%)	0 (0%)	0.62
Renal impairment*	1401 (29.5%)	1318 (29.6 %)	83 (28.1%)	0.65
Dialysis (regardless of CC)*	26 (0.6%)	26 (0.6%)	0 (0%)	0.40
Peripheral artery disease	735 (15.5%)	698 (15.7%)	37 (12.5%)	0.16
Cerebrovascular disease	491 (10.3%)	471 (10.6%)	20 (6.8%)	0.04
History of stroke	188 (4.0%)	181 (4.1%)	7 (2.4%)	0.17
History of TIA	197 (4.2%)	188 (4.2%)	9 (3.05%)	0.45
Chronic lung disease	408 (8.6%)	376 (8.5%)	32 (10.9%)	0.16
LVEF (%) (median [IQR])*	50 (40–55)	50 (40–55)	50 (40–55)	0.10
3 vessel CAD	2791 (58.8%)	2667 (59.9%)	124 (42.0%)	<0.001
LM disease	1477 (31.1%)	1400 (31.5%)	77 (26.1%)	0.06
Previous MI	2637 (55.6%)	2484 (55.8%)	153 (51.9%)	0.20
Previous PCI	1068 (22.5%)	992 (22.4%)	76 (25.8%)	0.17
NYHA IV	139 (2.9%)	132 (3.0%)	7 (2.4%)	0.72
CCS 4	574 (12.1%)	549 (12.3%)	25 (8.5%)	0.05
ACS	137 (2.9%)	123 (2.8%)	12 (4.1%)	0.10

^aMissing data

Abbreviations: BMI, body mass index; CAD, coronary artery disease; CC, creatinine clearance; CCS, Canadian Cardiovascular Society; IQR, interquartile range; LVEF, left ventricular ejection fraction; MI, myocardial infarction; NYHA, New York Heart Association; PA, pulmonary artery; PCI, percutaneous coronary intervention; PS, propensity score; TIA, transient ischemic attack; VD, vessel disease

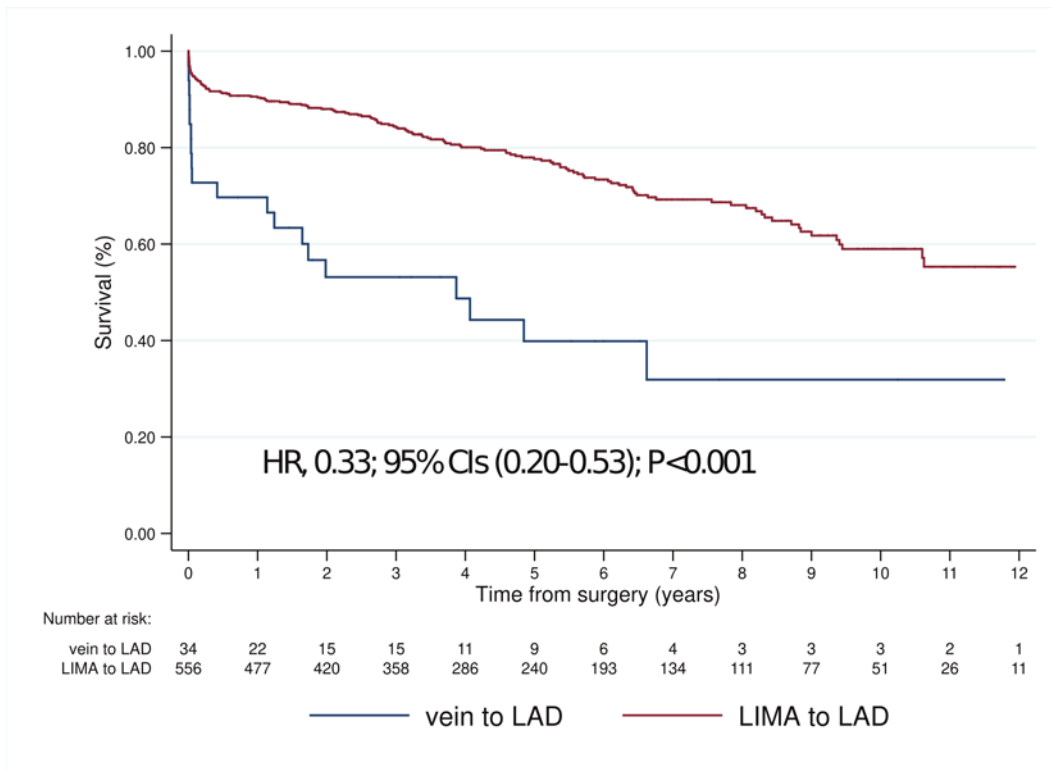


Figure S3. LIMA-LAD vs. SVG-LAD. Unadjusted survival curves between the two groups: LIMA-LAD vs. SVG-LAD CABG for the analysis of long-term survival. Hazard ratios and respective 95% confidence intervals in LIMA-LAD as compared to SVG-LAD CABG