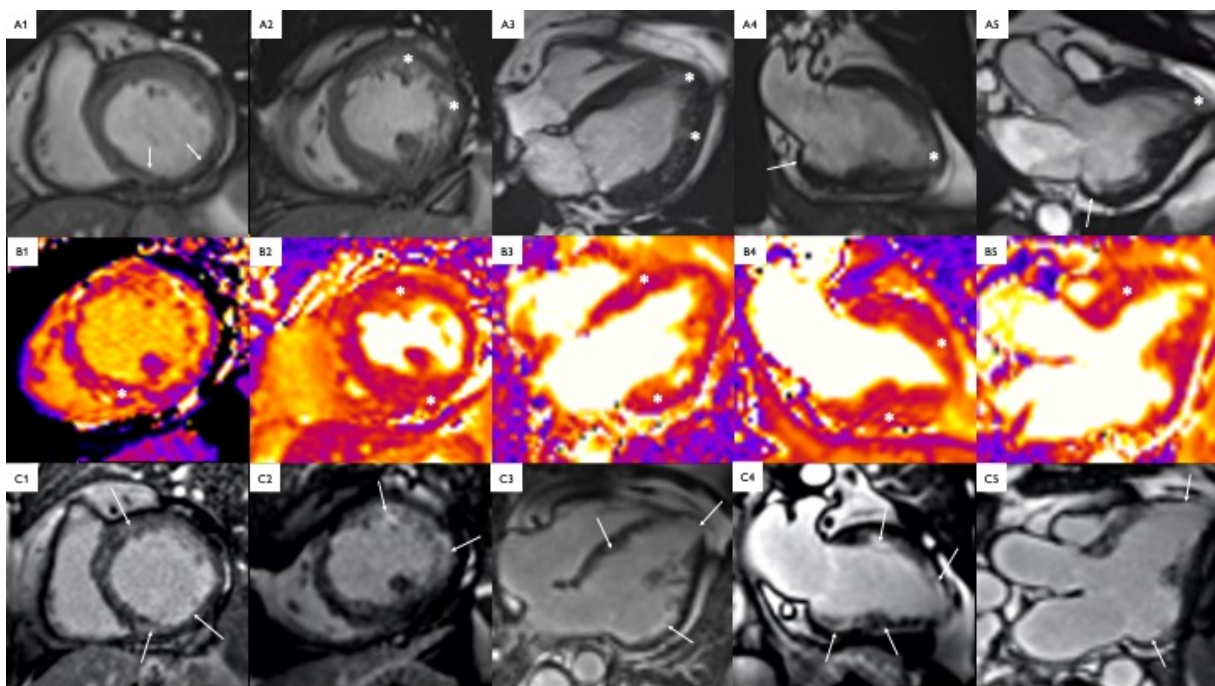


## Supplementary material

---

*Gil KE, Zaręba KM. A curious case of cardiac fat deposition in a patient with hypereosinophilic syndrome. Kardiol Pol. 2022.*

Please note that the journal is not responsible for the scientific accuracy or functionality of any supplementary material submitted by the authors. Any queries (except missing content) should be directed to the corresponding author of the article.



**Figure S1.** Cardiovascular magnetic resonance imaging in a patient with Loeffler's endocarditis. Panel A (A1-5) — cine images demonstrate thinning and hypokinesia of the inferior and inferolateral walls and prominent left ventricular trabeculae; Panel B — T1 (Panel B1) and T2 mapping (Panel B2-5) demonstrating signal elevations; Panel C (C1-5) — late gadolinium enhancement (LGE) imaging demonstrates fibrosis of the subendocardium and trabeculae. The subendocardial LGE might have been more pronounced prior to treatment with systemic steroid therapy

