

Supplementary material

Ferrari P, Malancini G, Racheli M, et al. Can we improve the accuracy of electrocardiographic algorithms for accessory pathway location in children?. Kardiol Pol. 2021.

Please note that the journal is not responsible for the scientific accuracy or functionality of any supplementary material submitted by the authors. Any queries (except missing content) should be directed to the corresponding author of the article.

RESULTS

Corrected diagnostic accuracy: when applied to a pathway that had the same probability of being in one of the possible locations, the algorithms by Arruda, Boersma and Chiang increased this probability 8-fold, 6.4-fold and 6.9-fold, respectively.

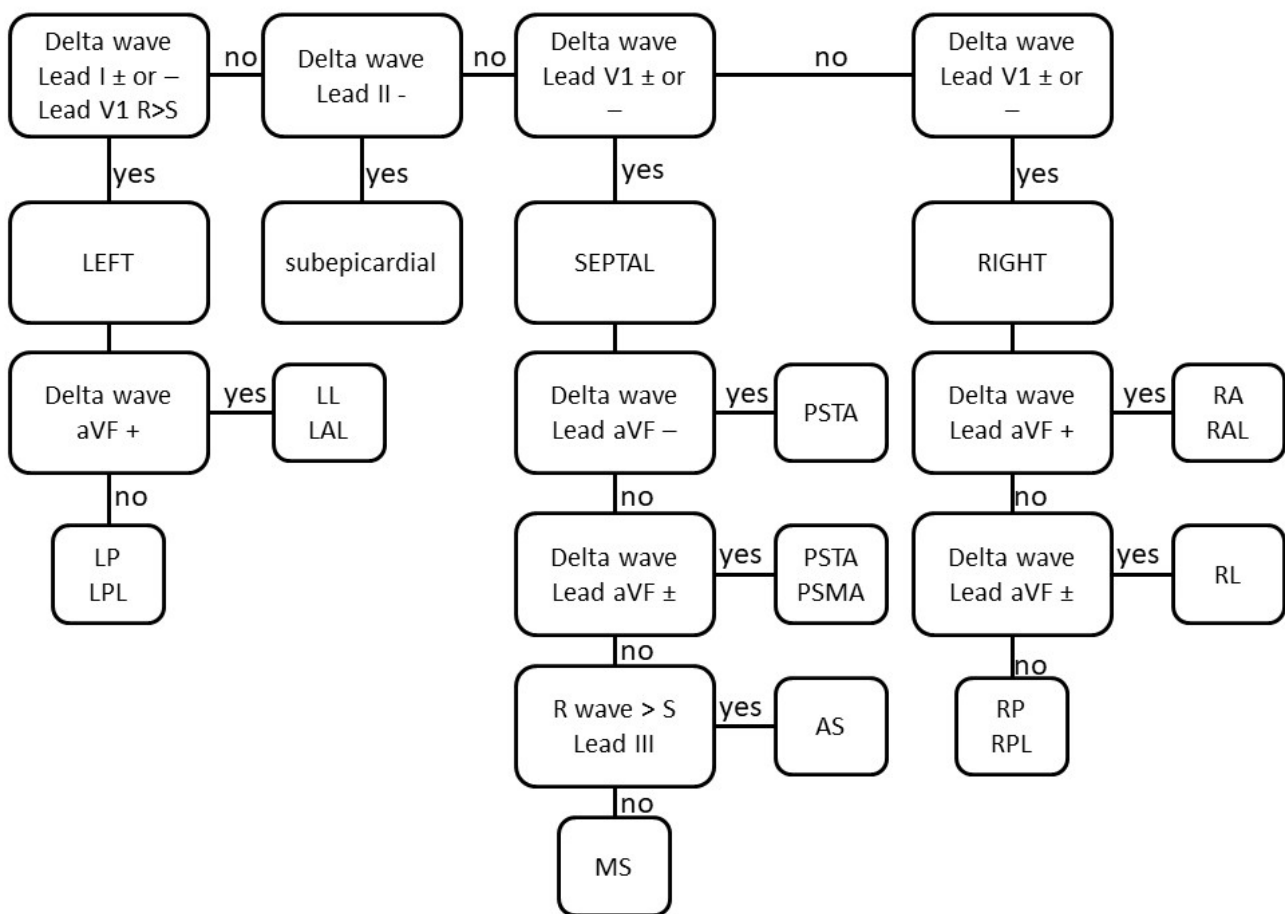


Figure S1. Arruda et al. algorithm

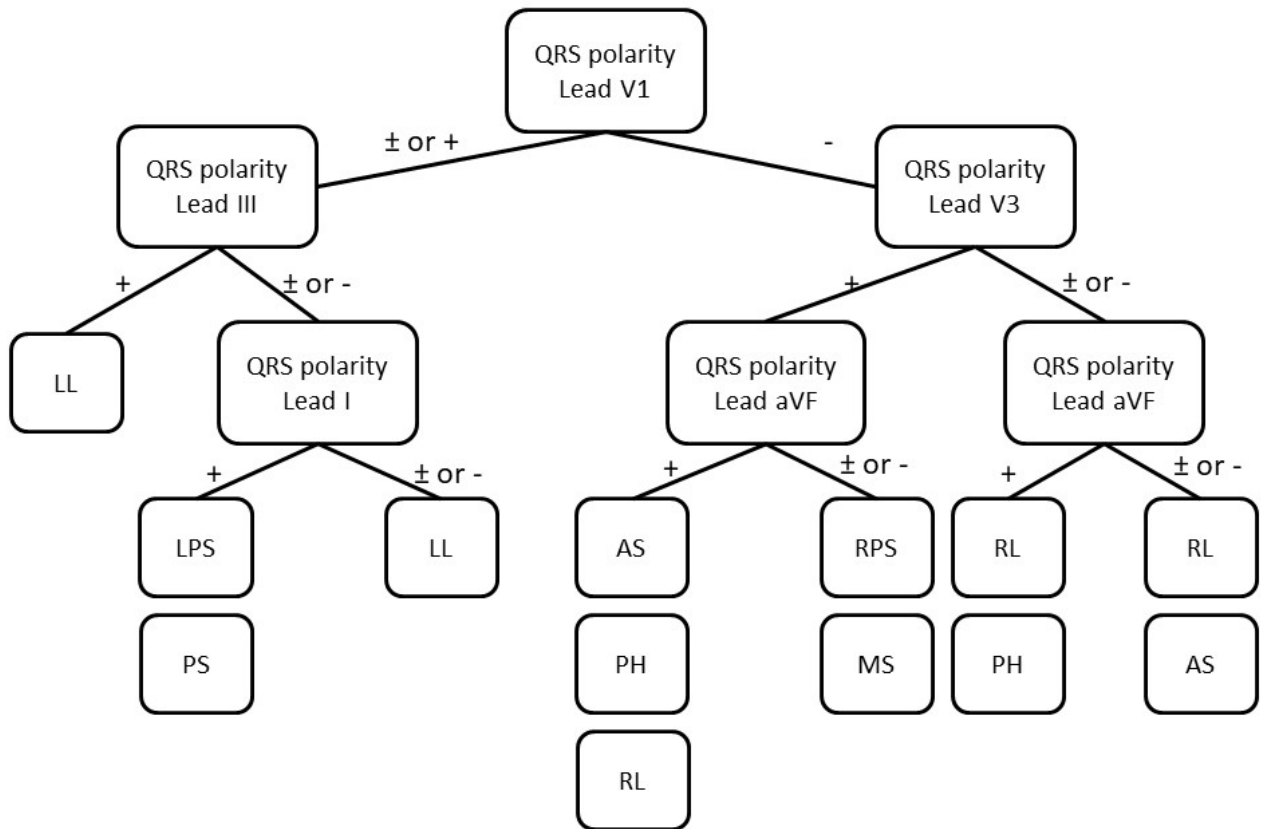


Figure S2. Boersm et al. algorithm

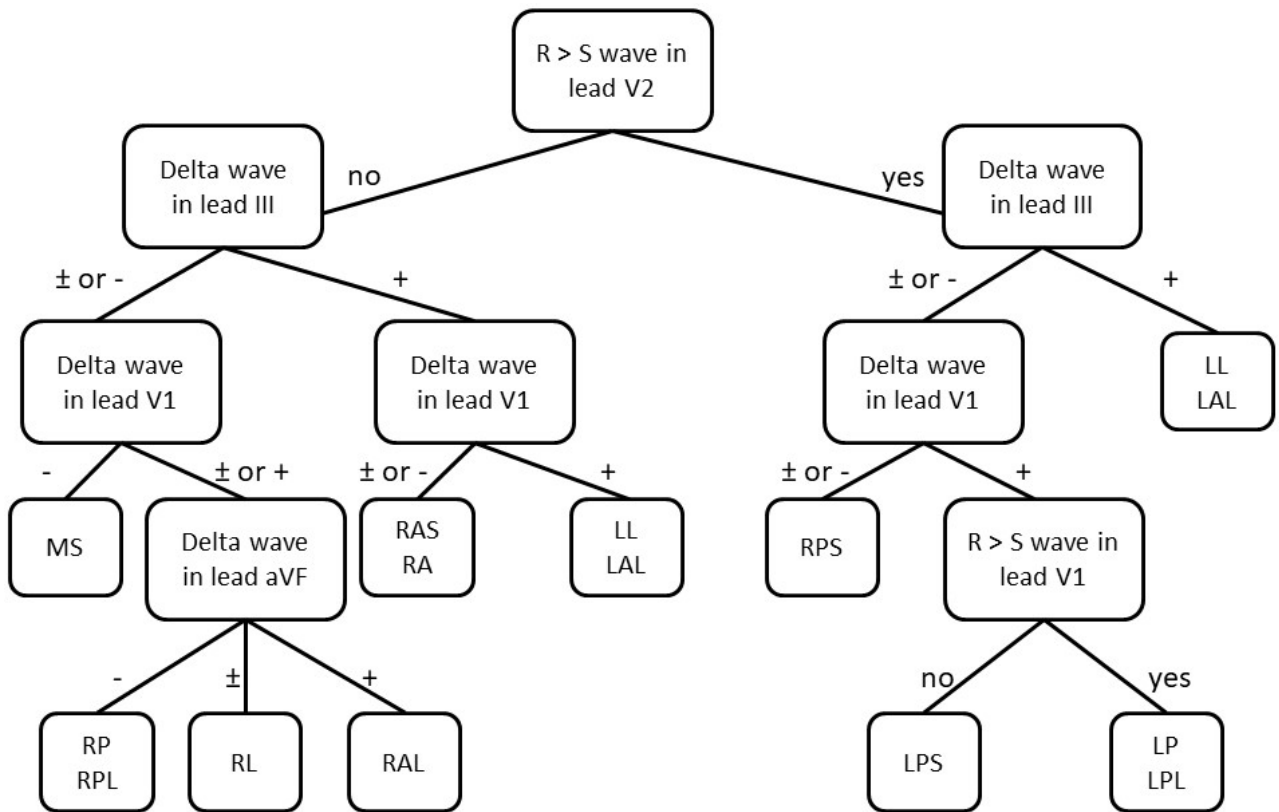


Figure 3. Chiang et al. algorithm