

Supplementary material

Dziekiewicz M, Markiewicz T. The next level of preoperative arteries computed tomography angiography. Kardiol Pol. 2021.

Please note that the journal is not responsible for the scientific accuracy or functionality of any supplementary material submitted by the authors. Any queries (except missing content) should be directed to the corresponding author of the article.

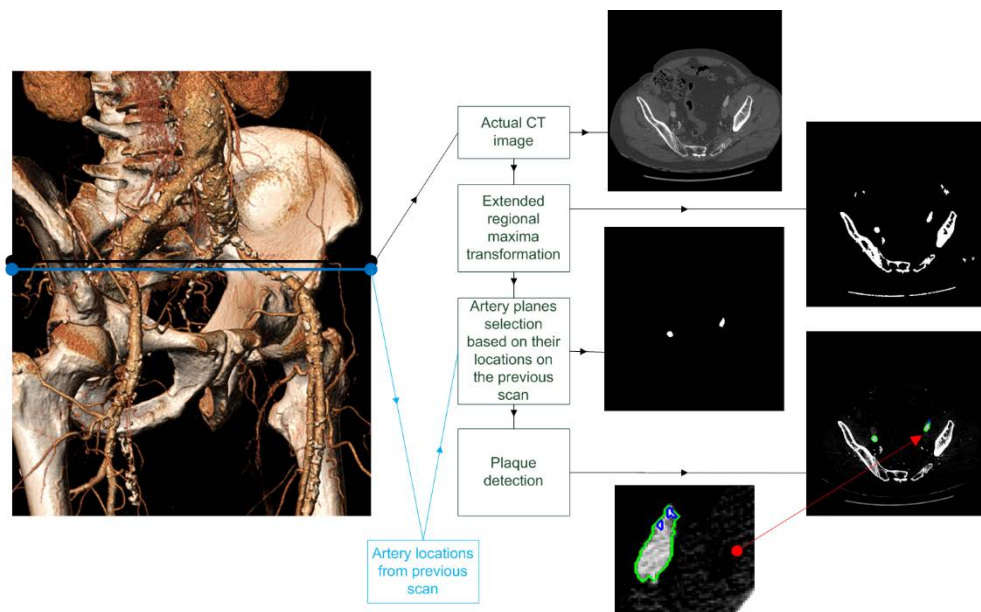


Figure S1. Schematic representation of the artery tracking algorithm (3-D reconstruction achieved with the 3Mensio Vascular Software)

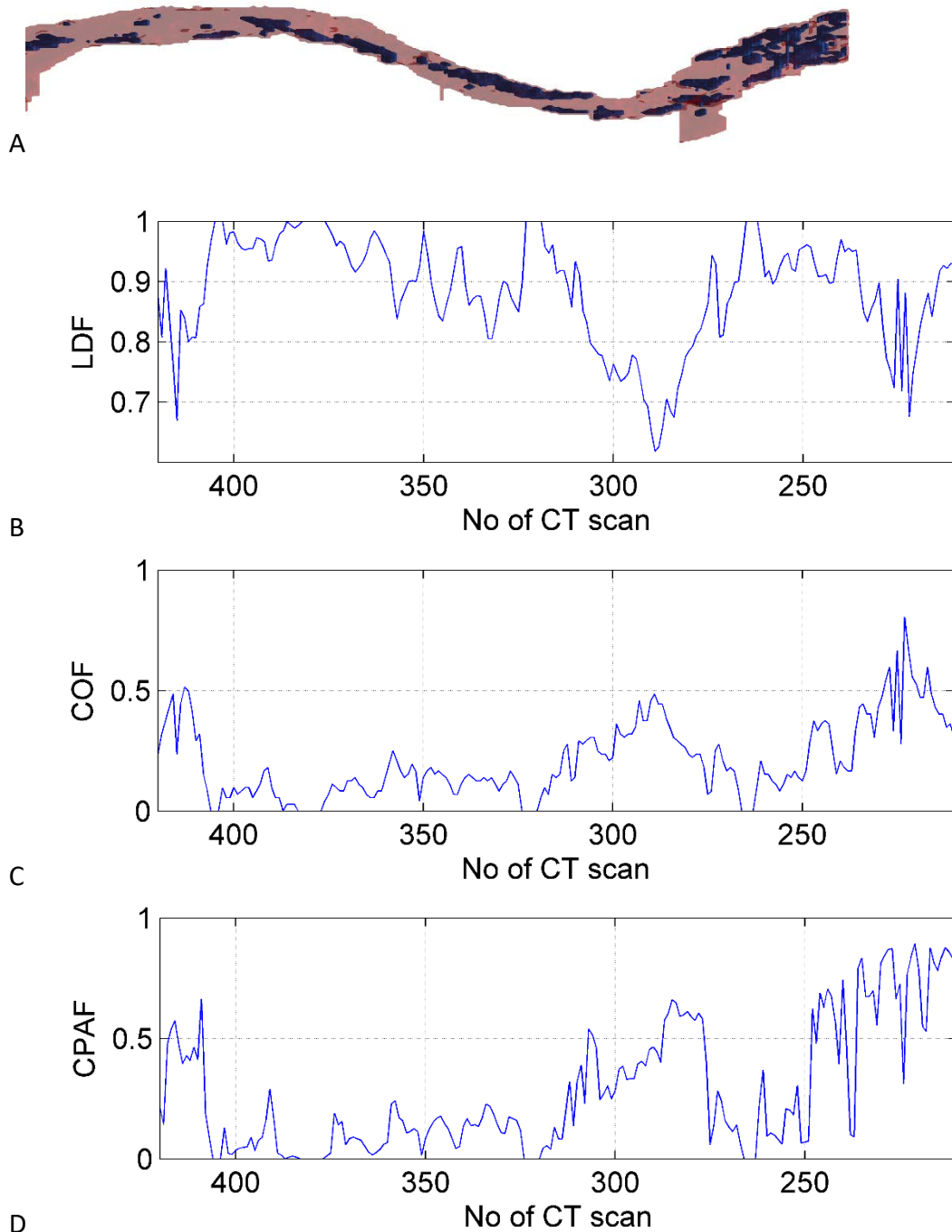
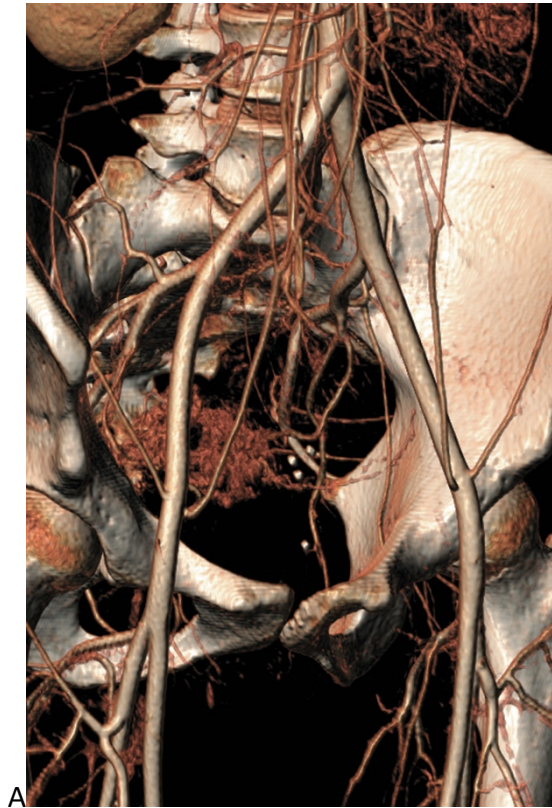
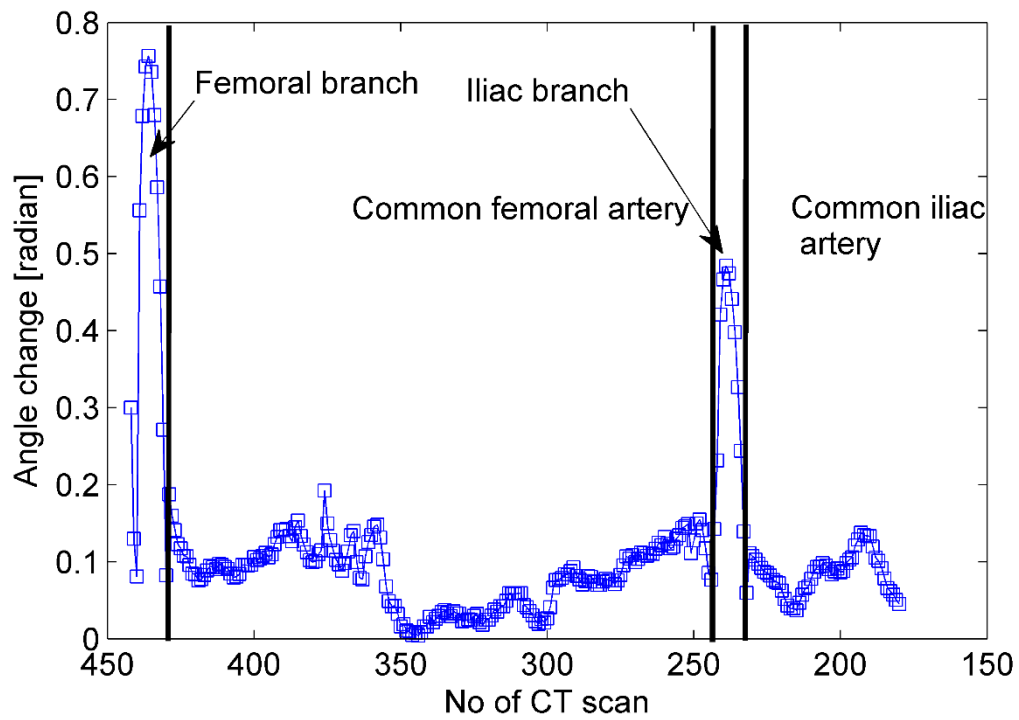


Figure S2. Plaque distribution measures in a segment of the ilio-femoral artery. The 3-D reconstruction of the artery lumen with scattered atherosclerotic plaques (**A**) and the continuous functions of LDF (**B**), COF (**C**), and CPAF (**D**)

Abbreviations: COF, circumference occupancy factor; CPAF, convex plaque area factor; CT, computed tomography; LDF, lumen decrease factor



A

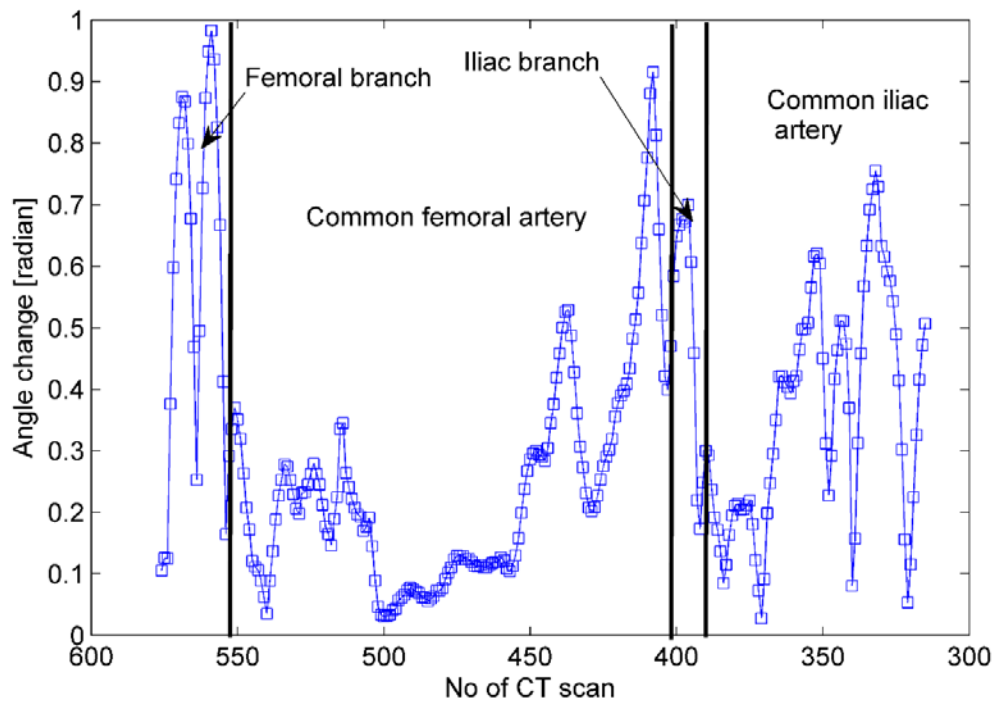


B

Figure S3. A 3-D reconstruction of (A) and direction changes (B) in the arteries of a healthy young woman

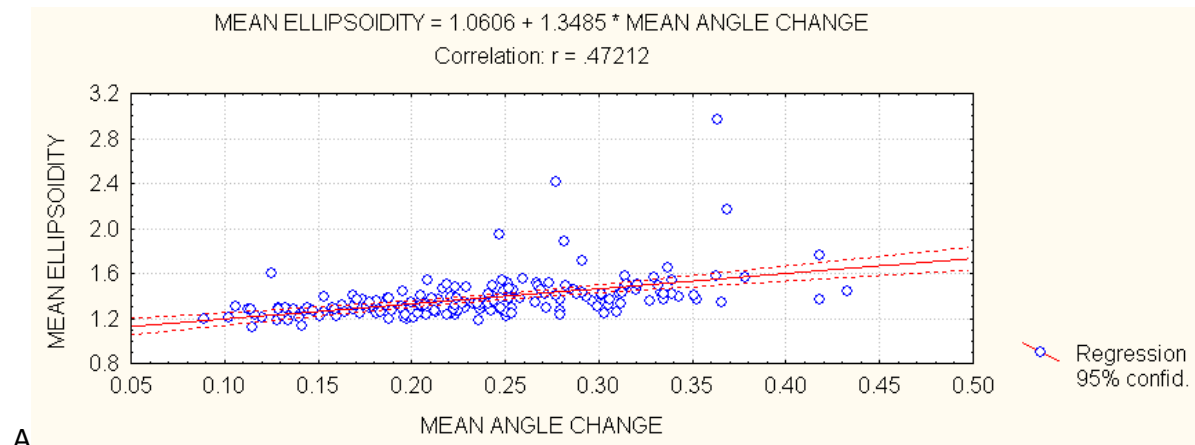


A

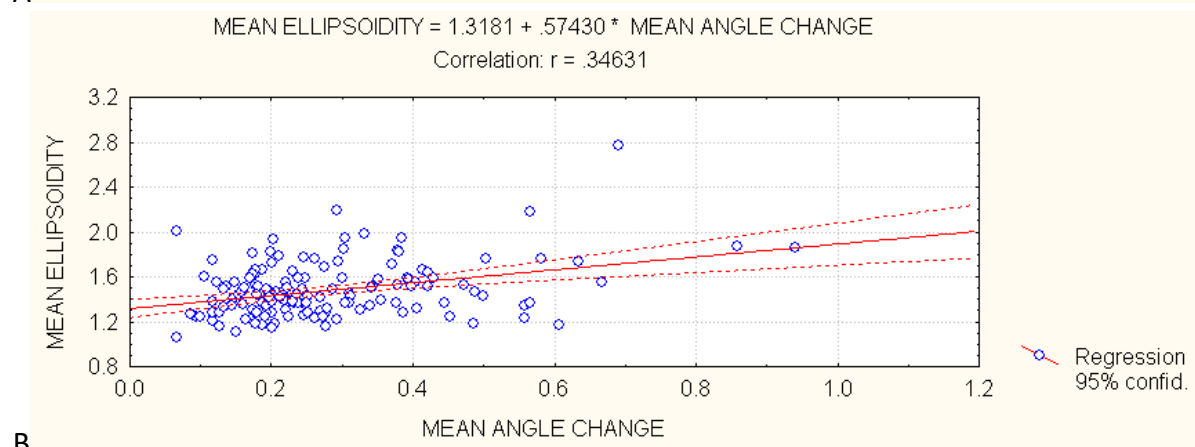


B

Figure S4. A 3-D reconstruction of (A) and direction changes (B) in the arteries of a patient with pronounced atherosclerosis



A



B

Figure S5. Linear regressions of the mean ellipticity and the mean angle changes. The results for the ilio-femoral (A) and the common iliac (B) segments