

Supplementary material

Santos M, Oliveira M, Vieira S, et al. Predictors and mid-term outcomes of nosocomial infection in ST-elevation myocardial infarction patients treated by primary angioplasty. Kardiol Pol. 2021.

Please note that the journal is not responsible for the scientific accuracy or functionality of any supplementary material submitted by the authors. Any queries (except missing content) should be directed to the corresponding author of the article.

Composite Major Adverse Cardiac and Cerebrovascular Event (MACCE) at 1-year follow-up

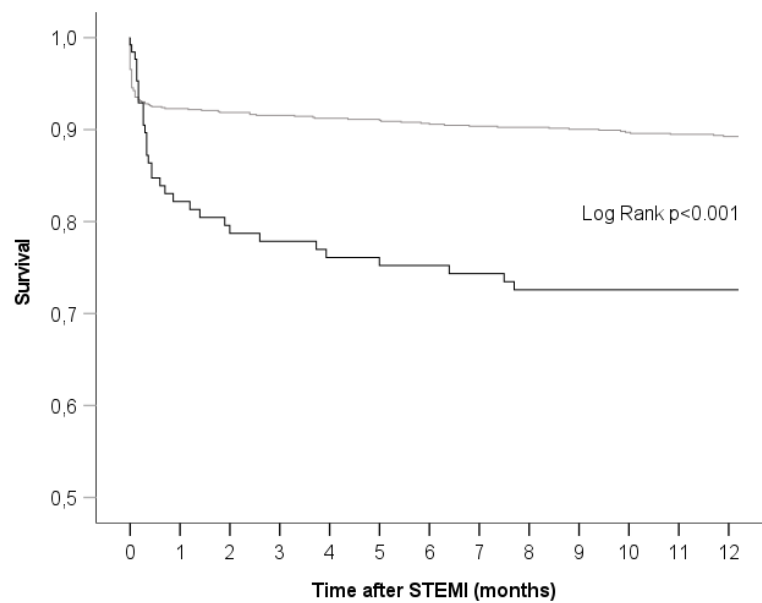


Figure S1. Incidence of death at 1-year follow up according to the presence of nosocomial infection (NI) or smoking habits

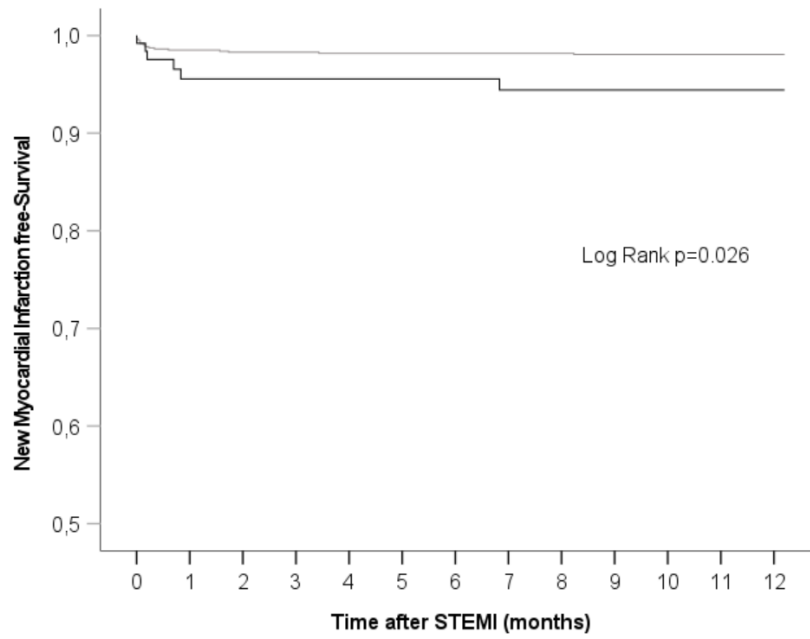


Figure S2. Incidence of cerebrovascular accident at 1-year follow up according to the presence of nosocomial infection (NI) or smoking habits

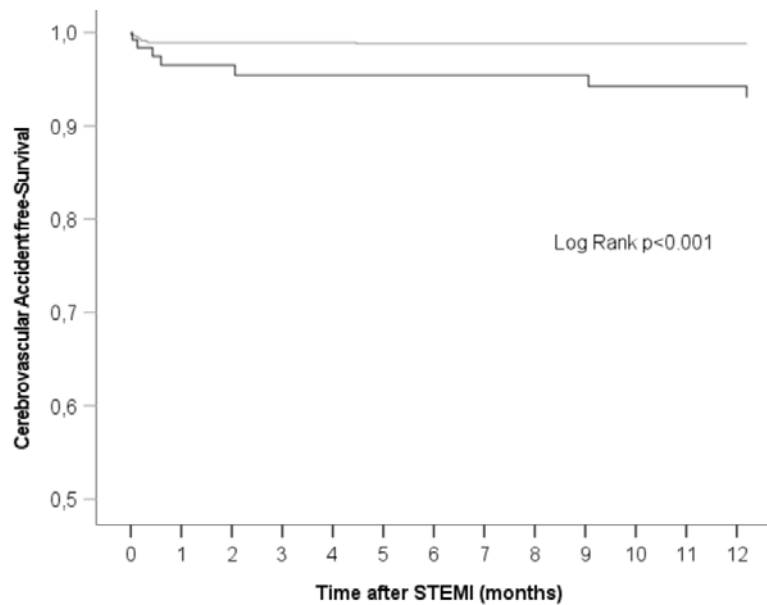


Figure S3. Incidence of new myocardial infarction at 1-year follow up according to the presence of nosocomial infection (NI) or smoking habits

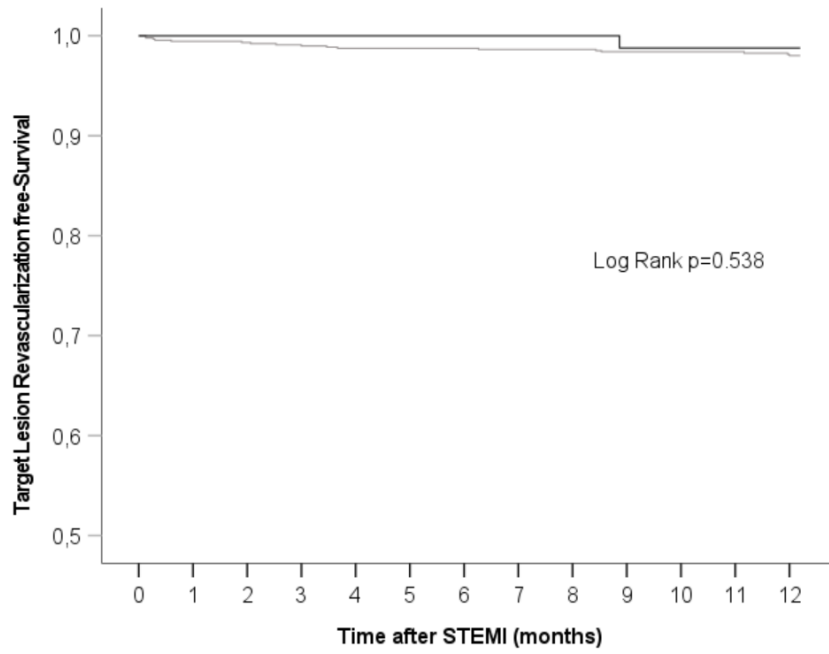


Figure S4. Incidence of target lesion revascularization at 1-year follow up according to the presence of nosocomial infection (NI) or smoking habits