

Supplementary material

Li X, Wei C, Wu C, et al. Src-IL-18 signaling regulates the secretion of atrial natriuretic factor in hypoxic beating rat atria. *Kardiol Pol.* 2021.

Please note that the journal is not responsible for the scientific accuracy or functionality of any supplementary material submitted by the authors. Any queries (except missing content) should be directed to the corresponding author of the article.

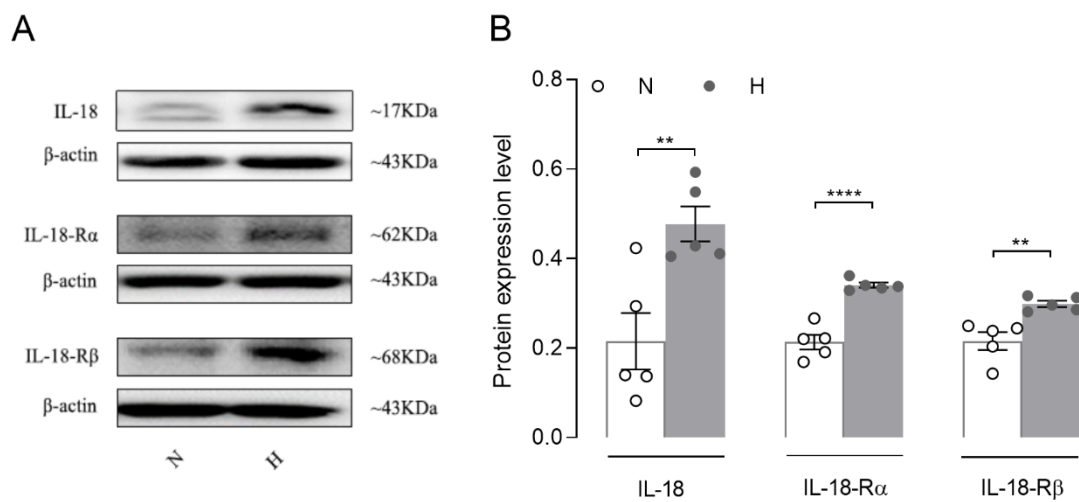


Figure S1. Effects of hypoxia on the protein levels of IL-18 and its receptors in beating rat atria. Representative Western blot bands and their quantification (n = 5, 3 male and 2 female/per group) were presented at **A** and **B** panels. Data were expressed as mean (SEM). ** $P < 0.01$, **** $P < 0.0001$

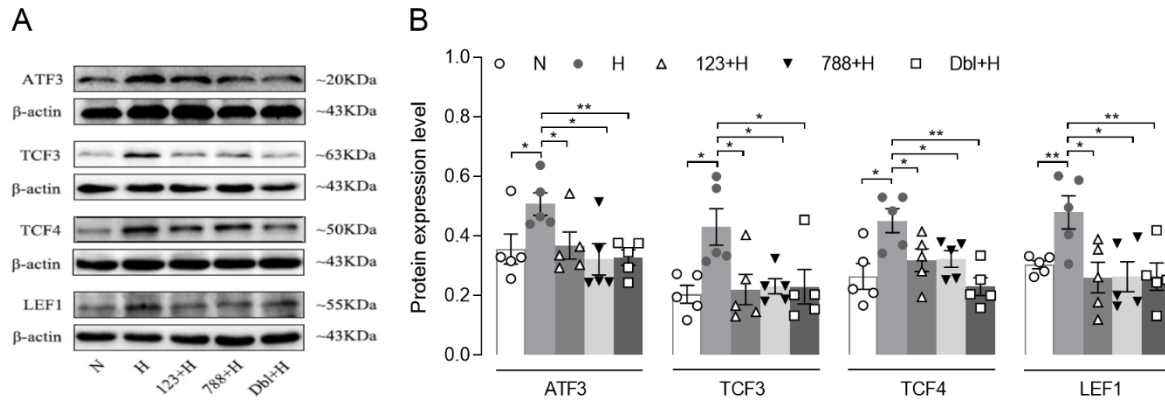


Figure S2. Effects of hypoxia on the protein levels of ATF3, TCF3, TCF4 and LEF1 in hypoxic beating rat atria. Representative Western blot bands and their quantification (n = 5, 2 male and 3 female/per group) were presented at **A** and **B** panels. Data were expressed as mean (SEM). * $P < 0.05$, ** $P < 0.01$

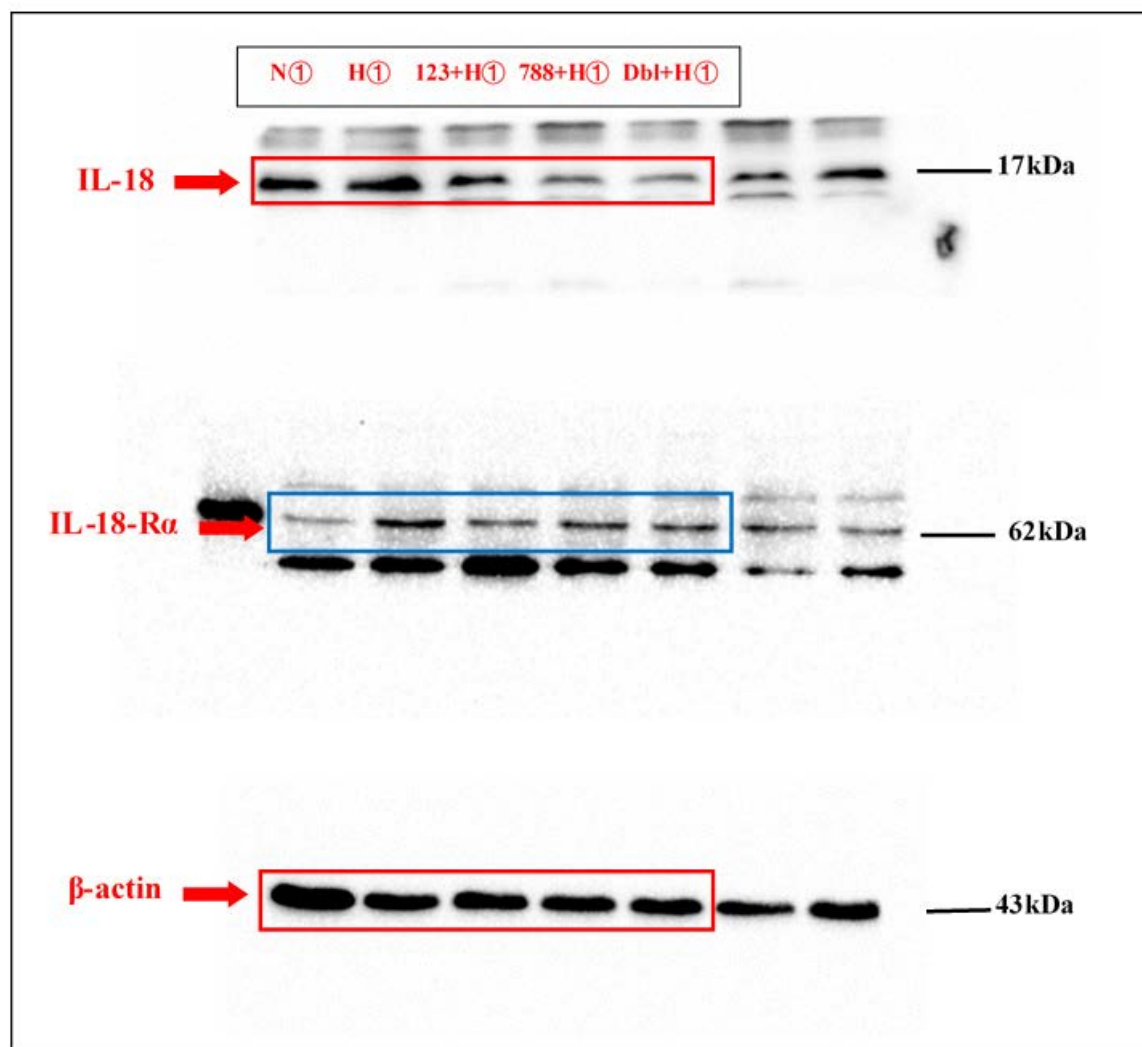
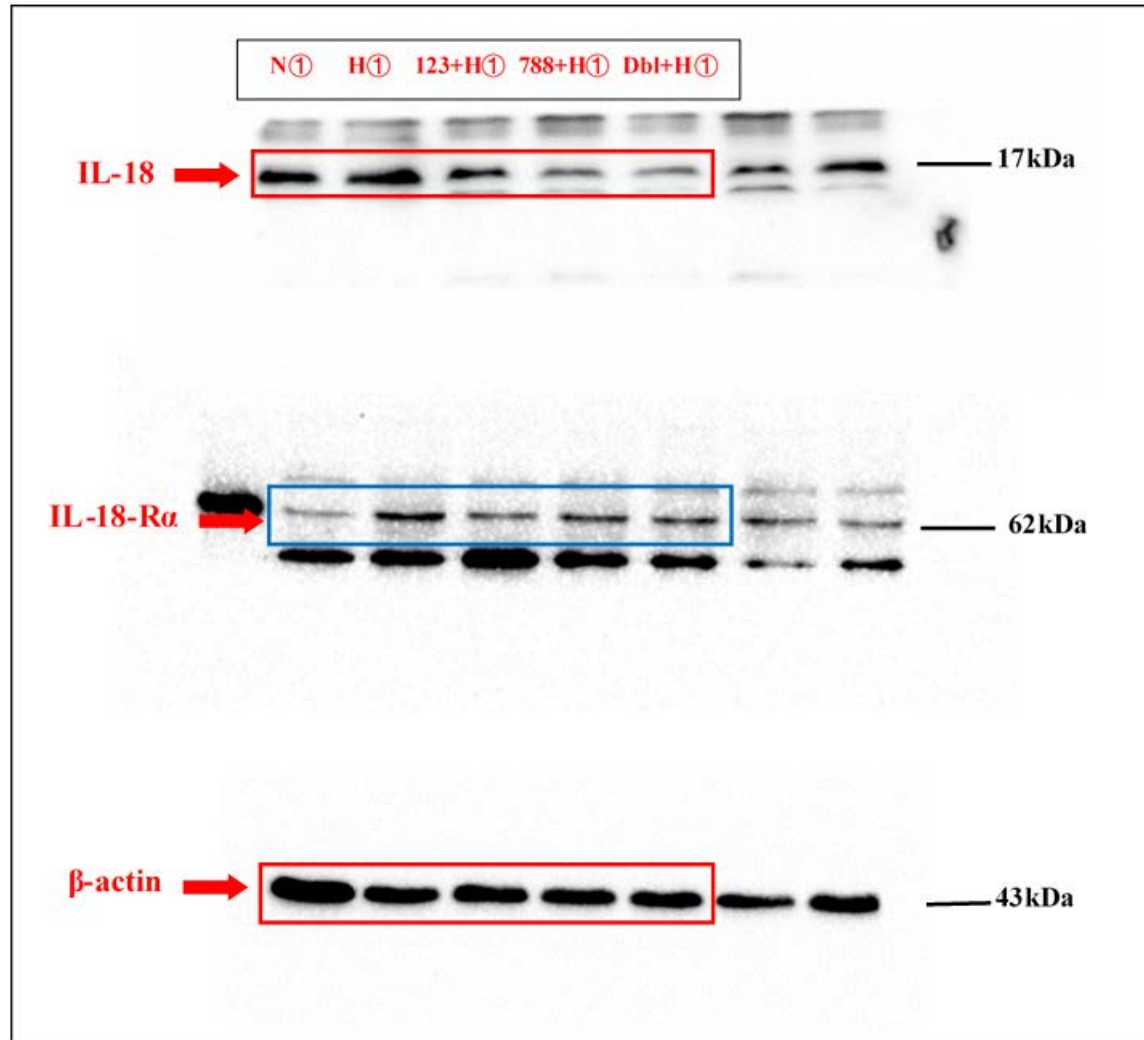


Figure S3. Uncropped scans of western blots for figures. According to the instructions of the Pre-stained Protein Marker, the band close to the molecular weight of the target protein is regarded as the target band. The blue box marked the target proteins; The red box marked the band selected in the figure

Figure 1A and 1B: IL-18 and IL-18-R α



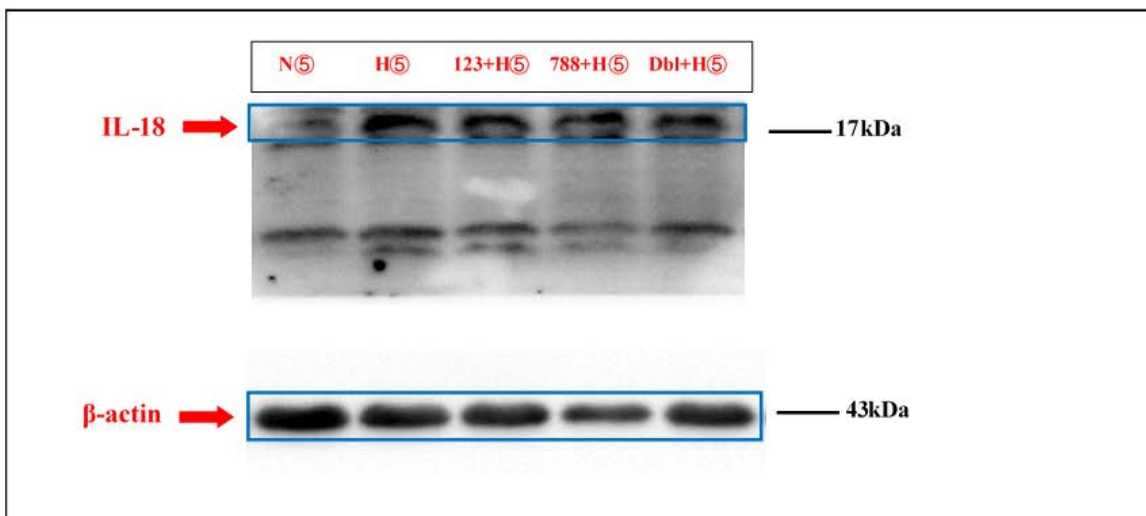
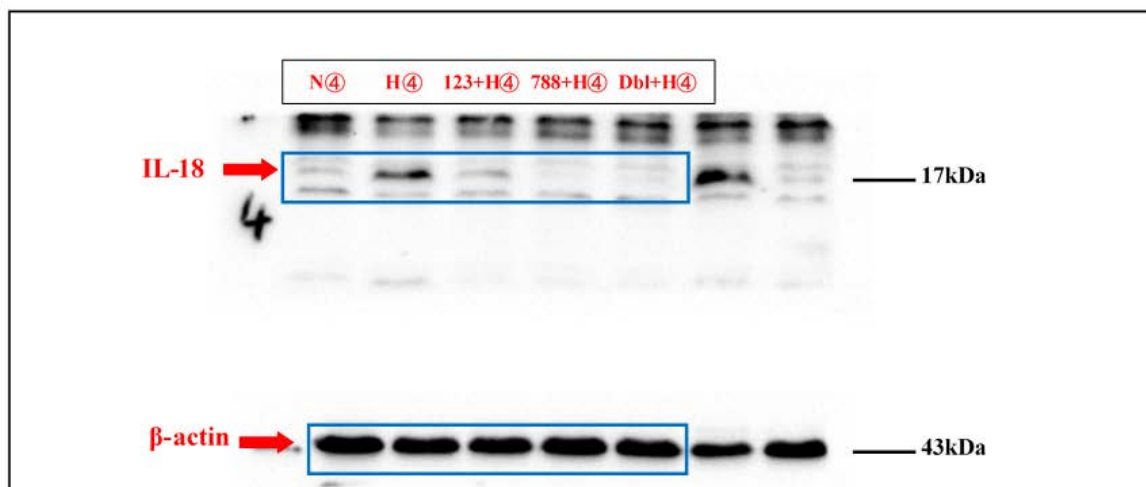
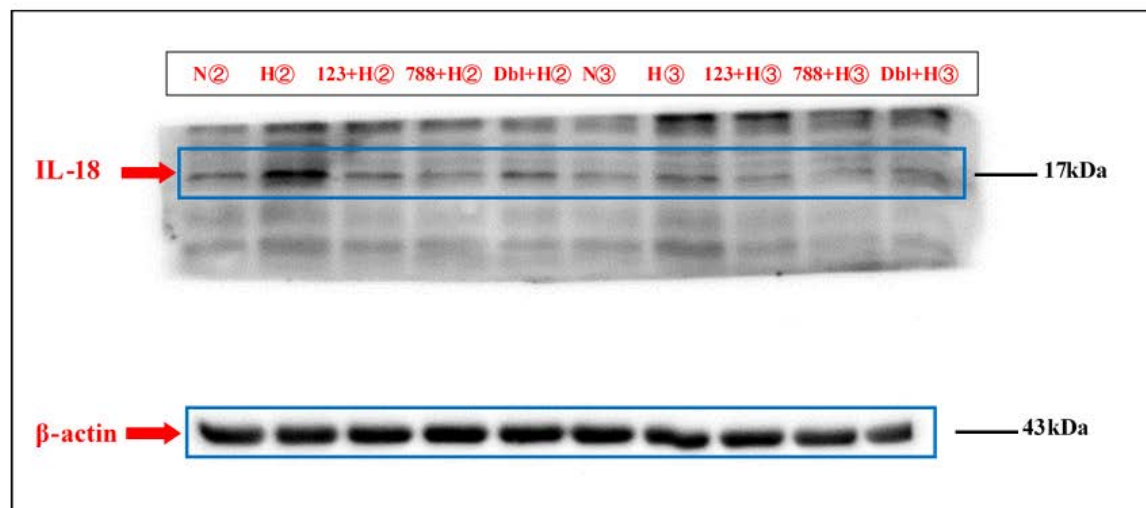
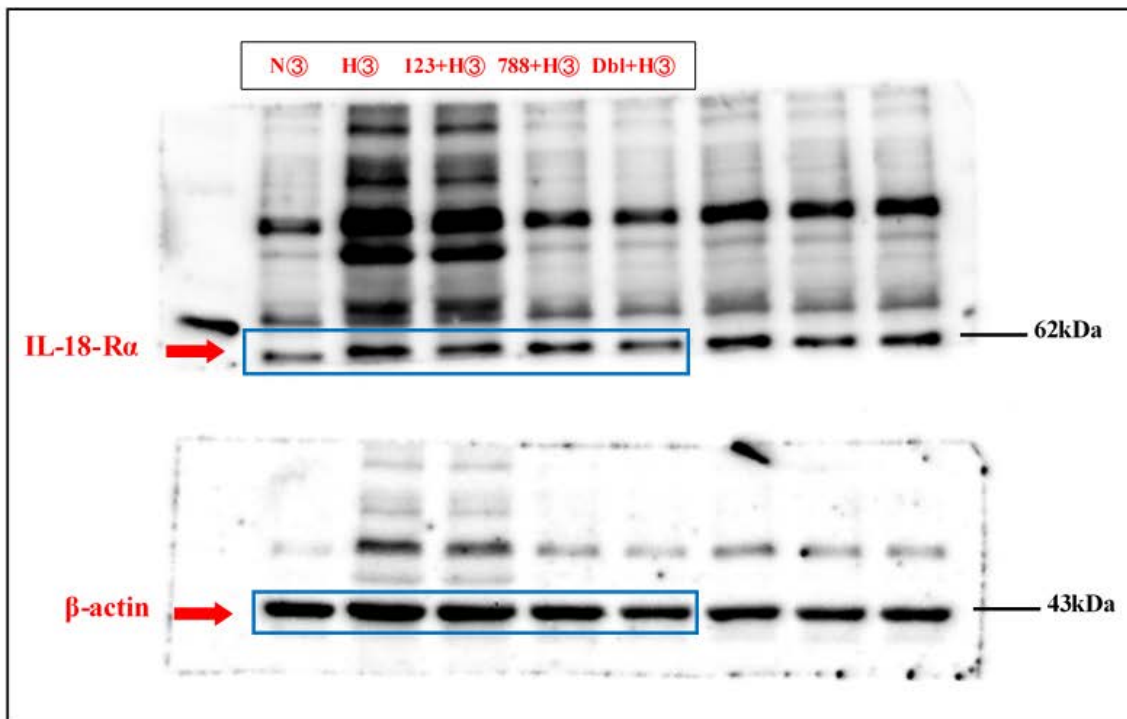
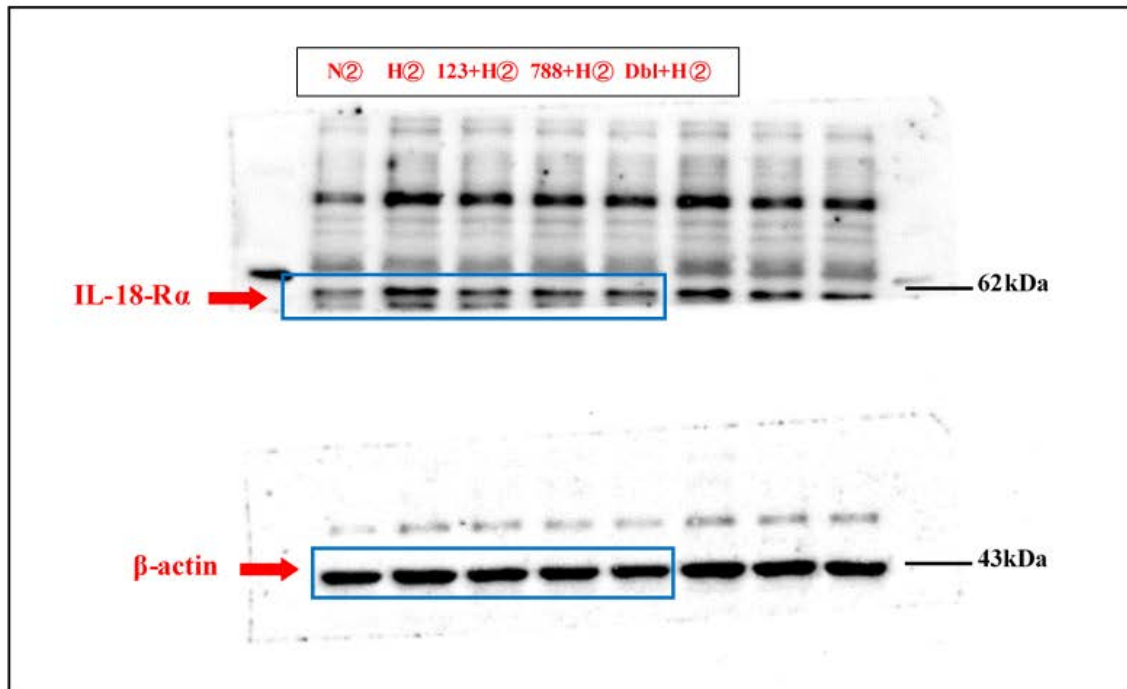


Figure 1A and 1B: IL-18-R α



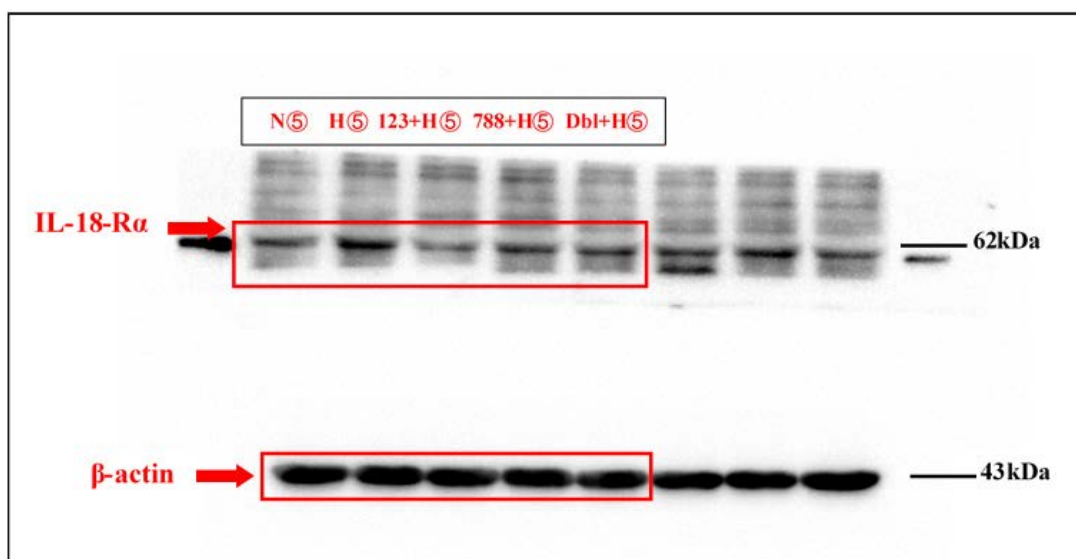
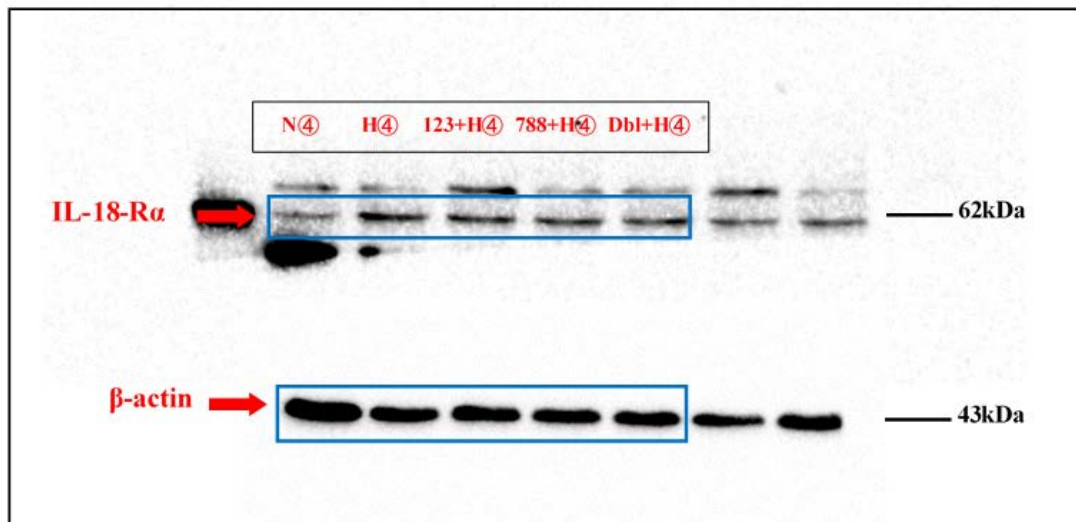
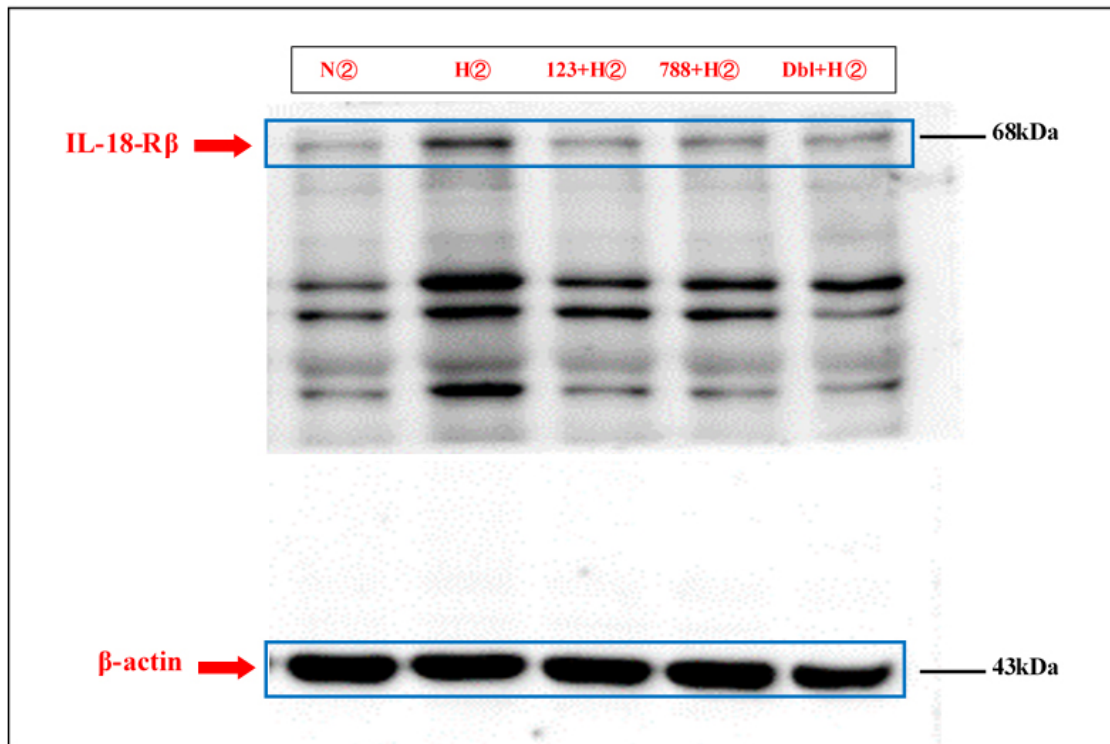
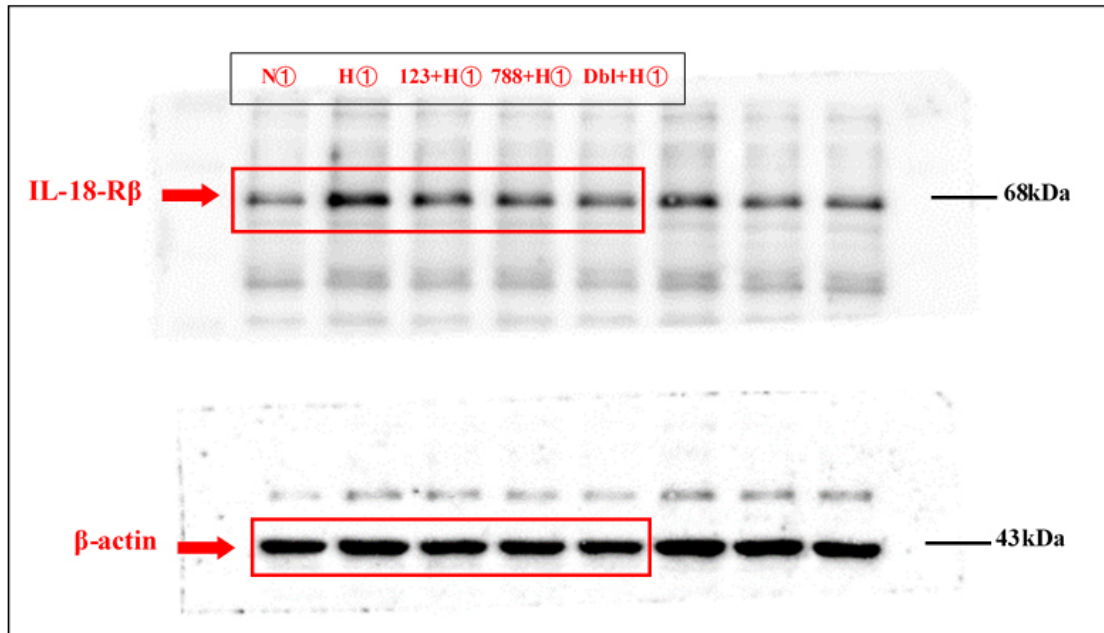


Figure 1A and 1B: IL-18-R β



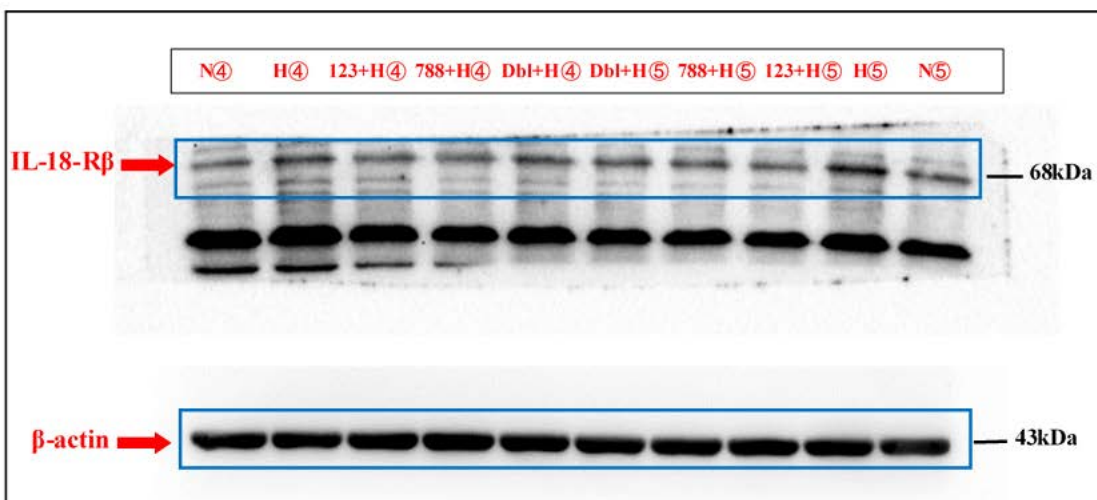
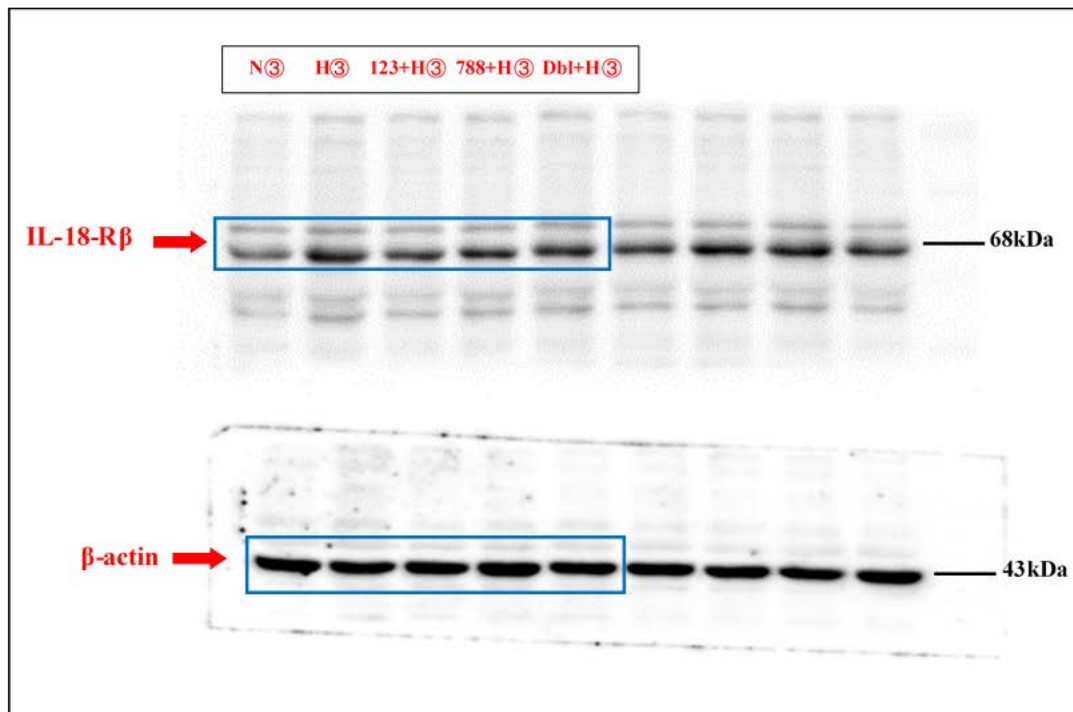
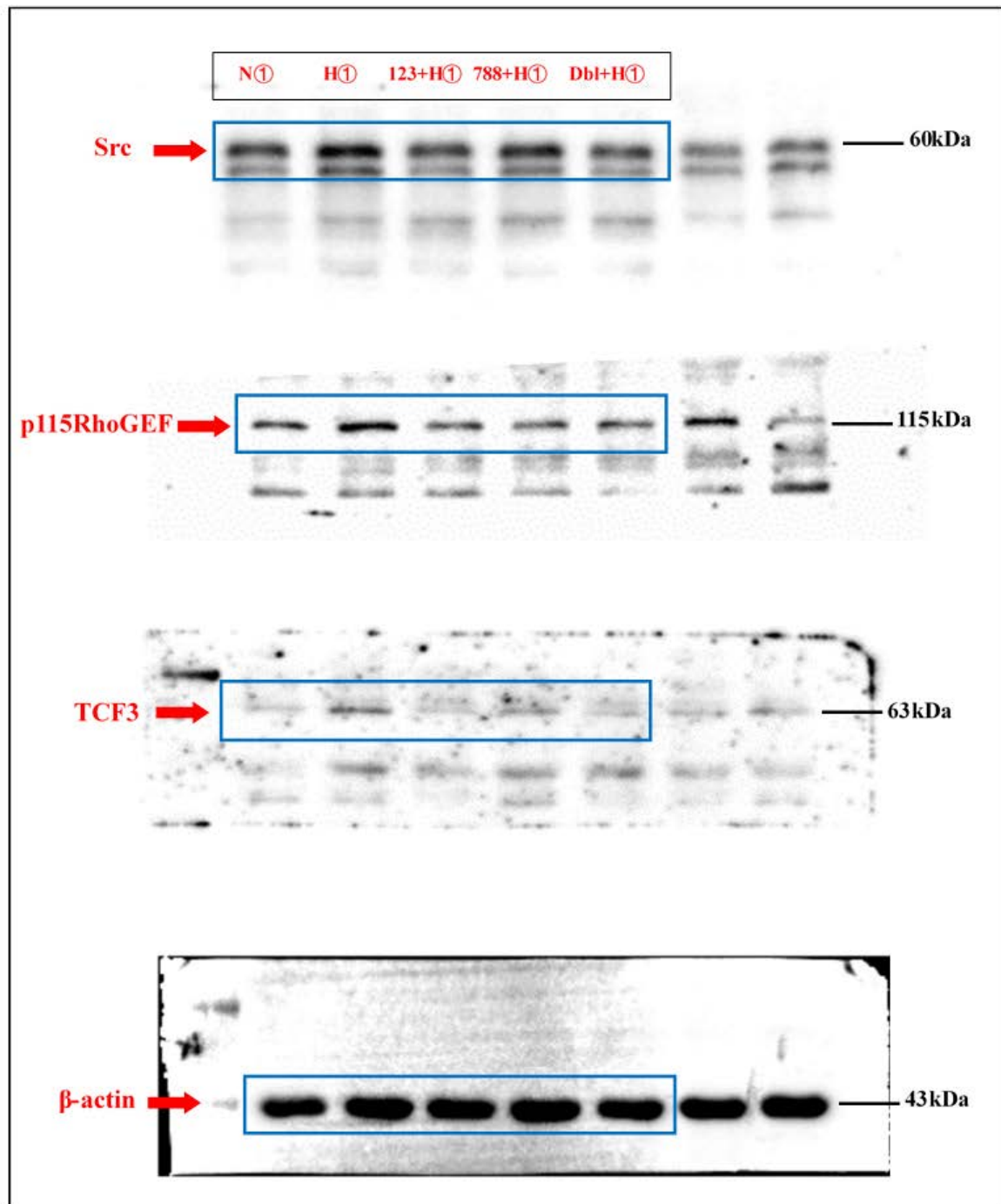
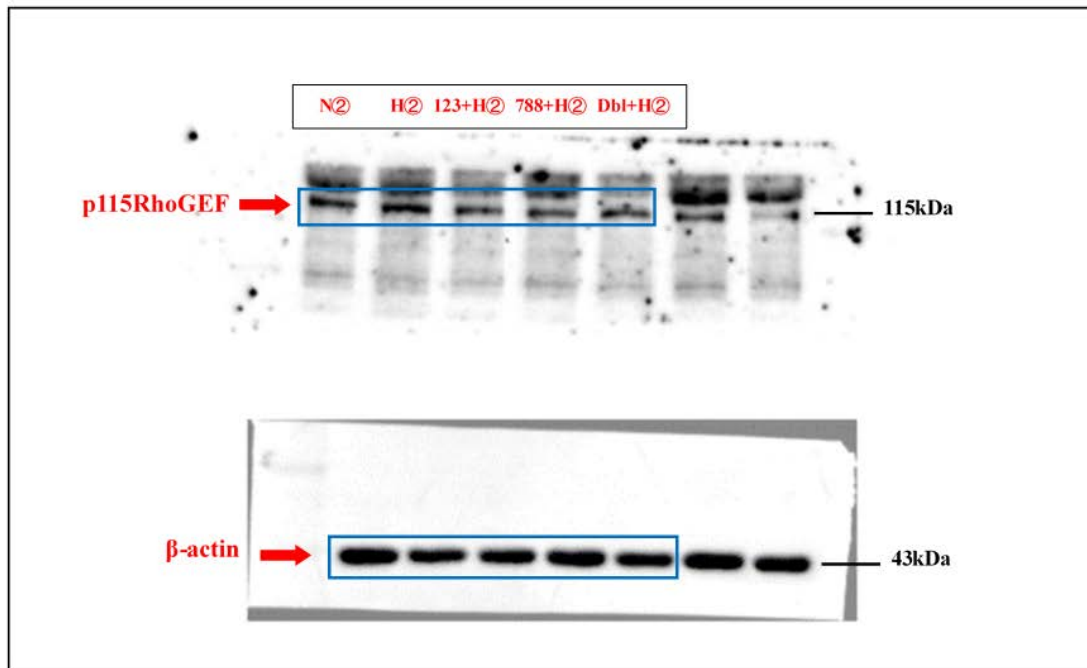
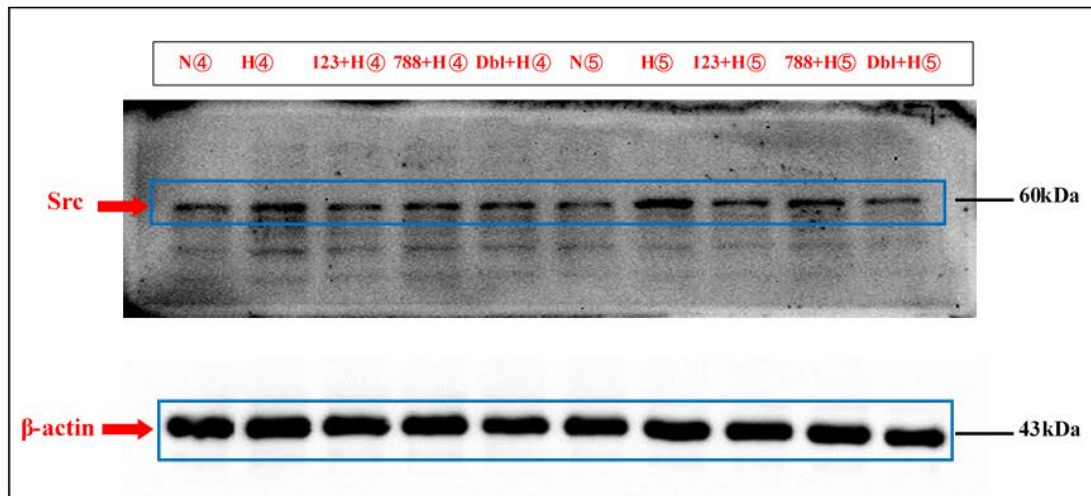


Figure 1A and 1B: Src, RhoGEF; S2A and S2B: TCF3





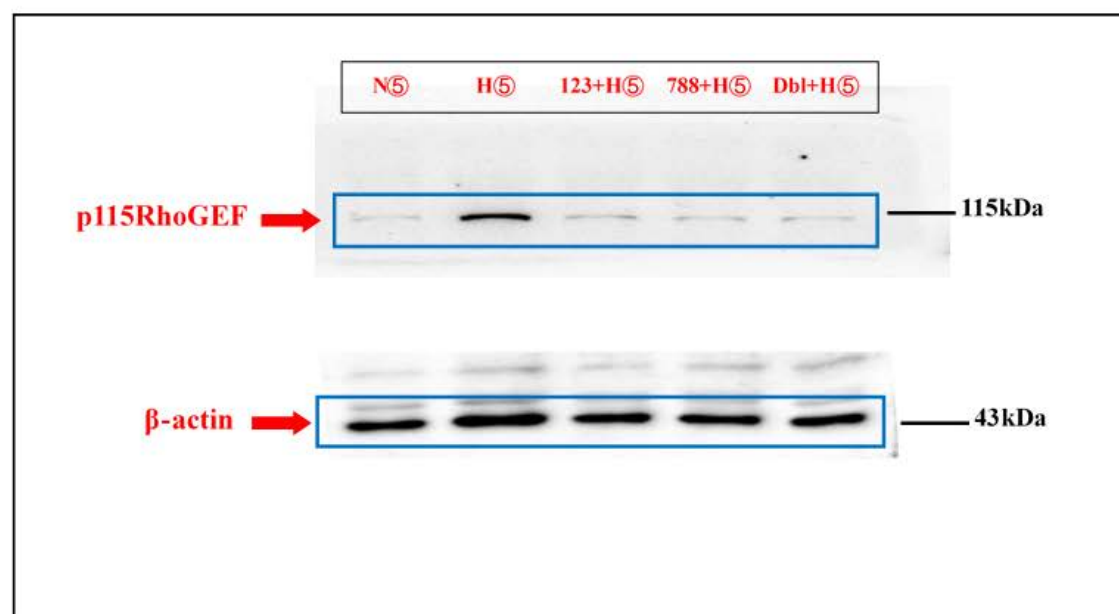
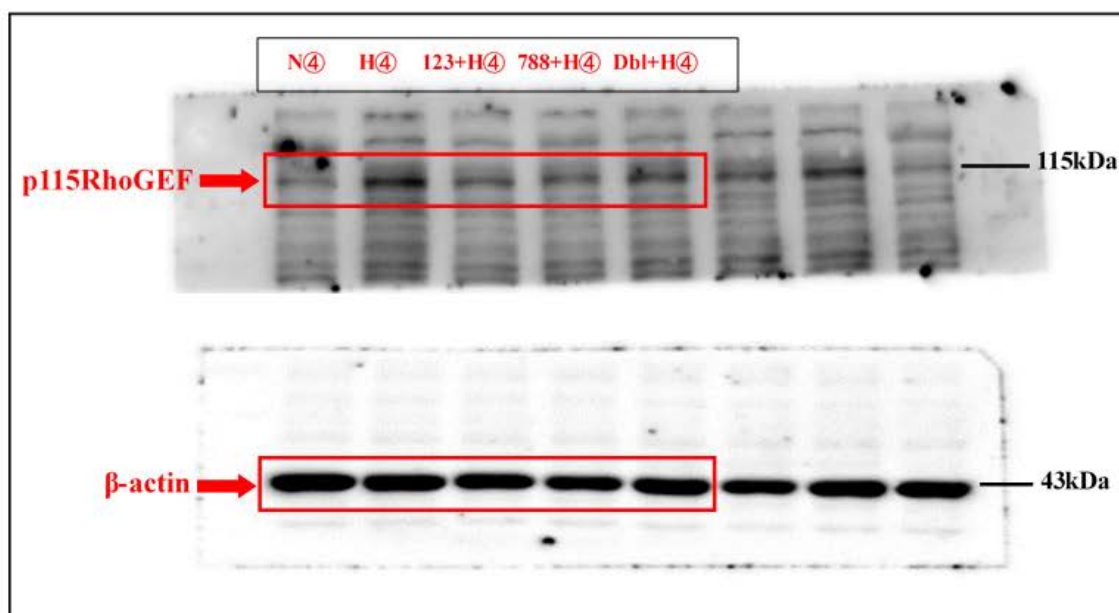
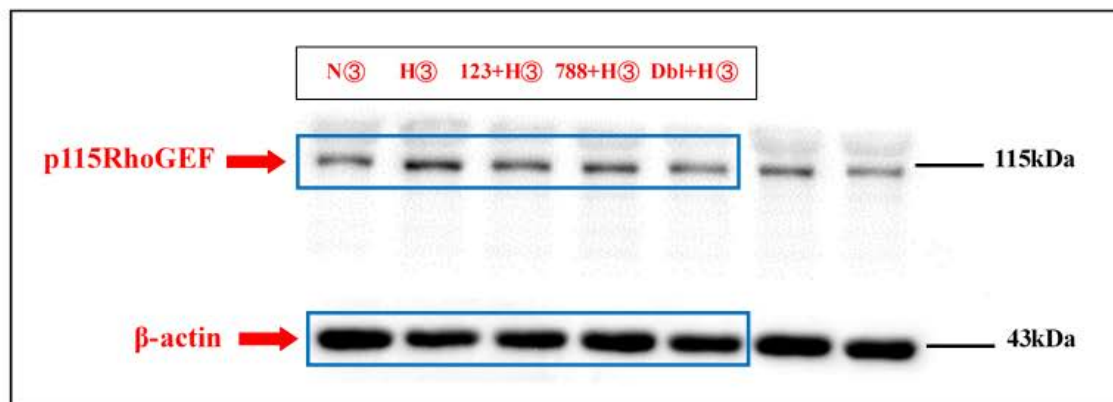


Figure 2A and 2B: RhoGEF

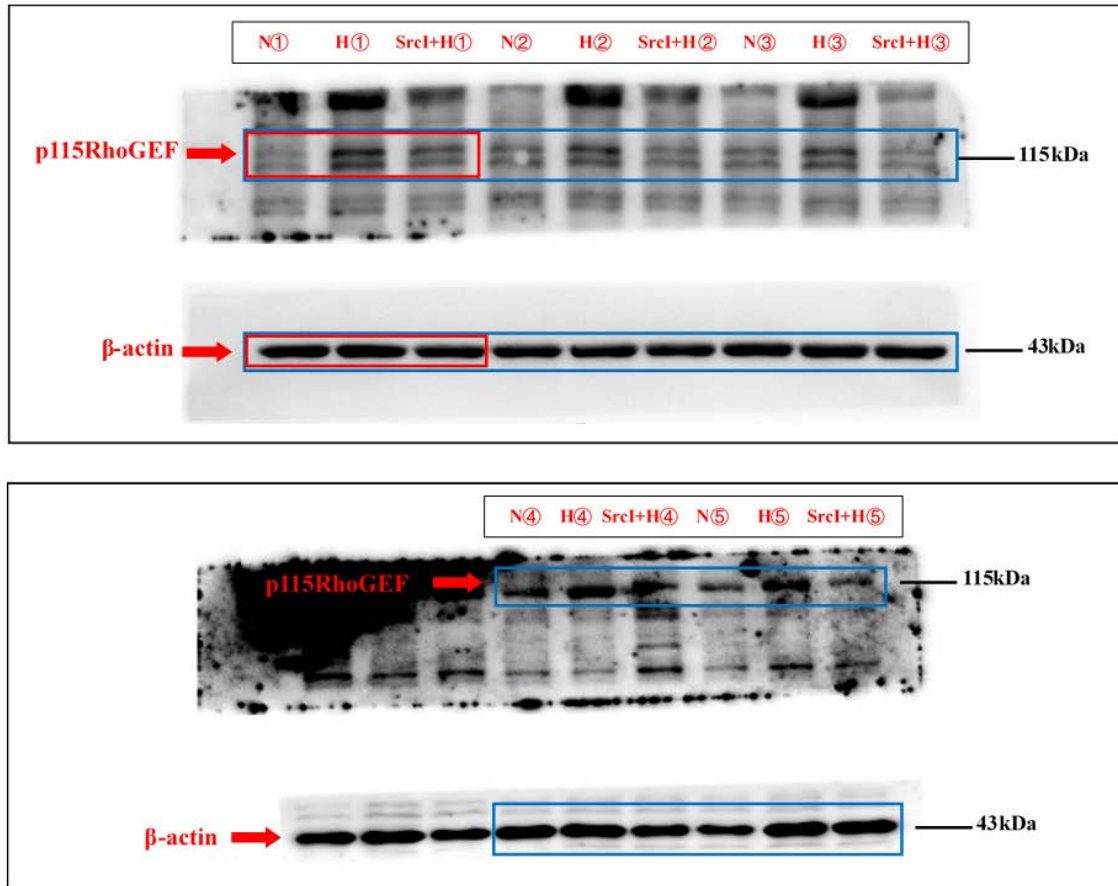


Figure 2A and 2B: RhoA

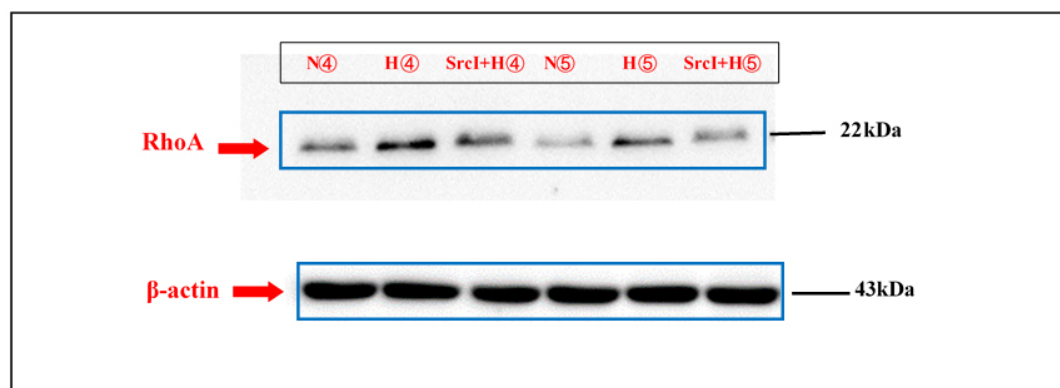
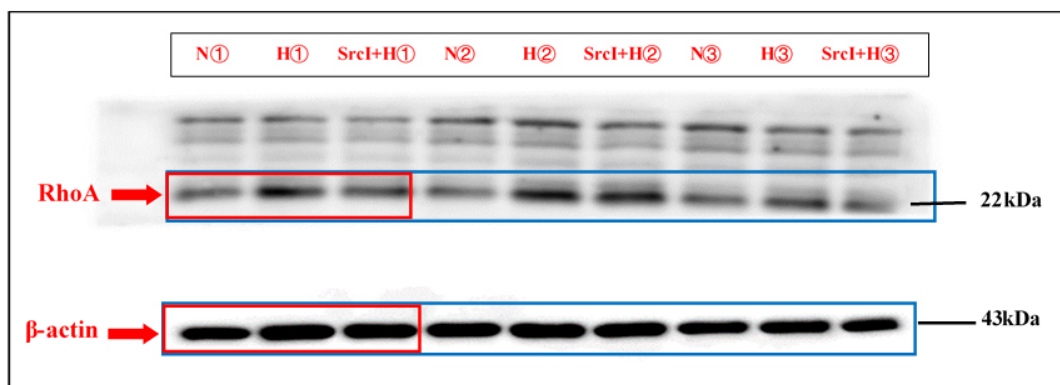
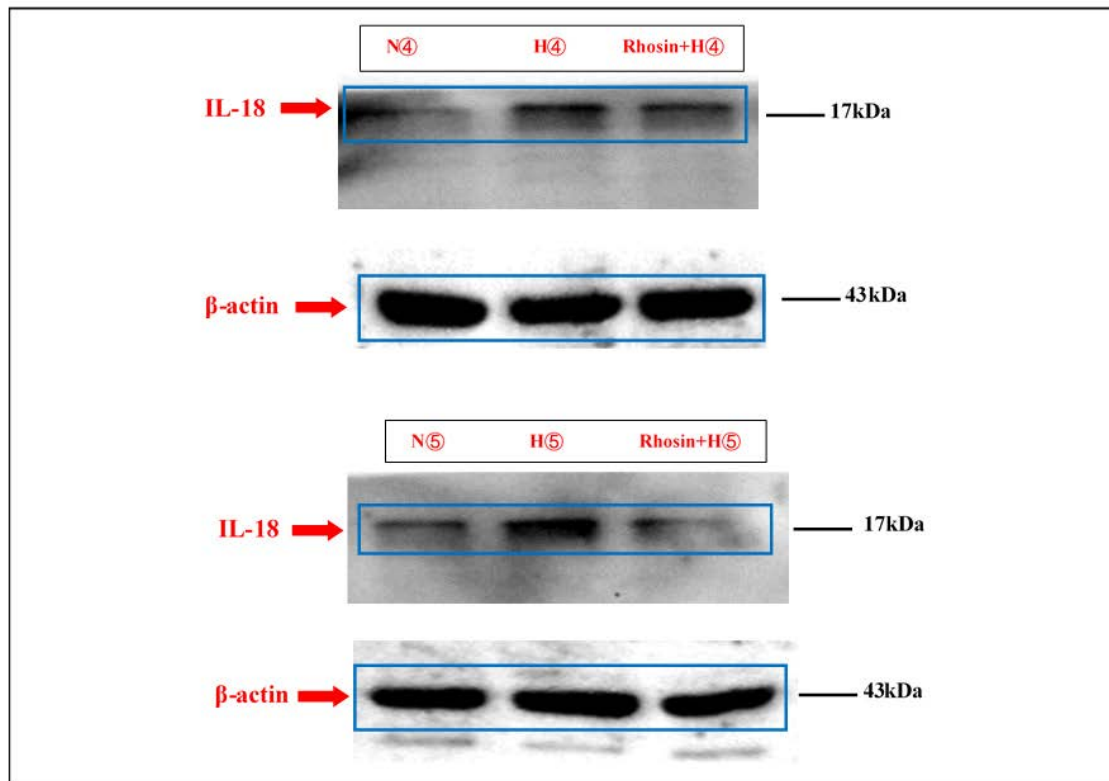
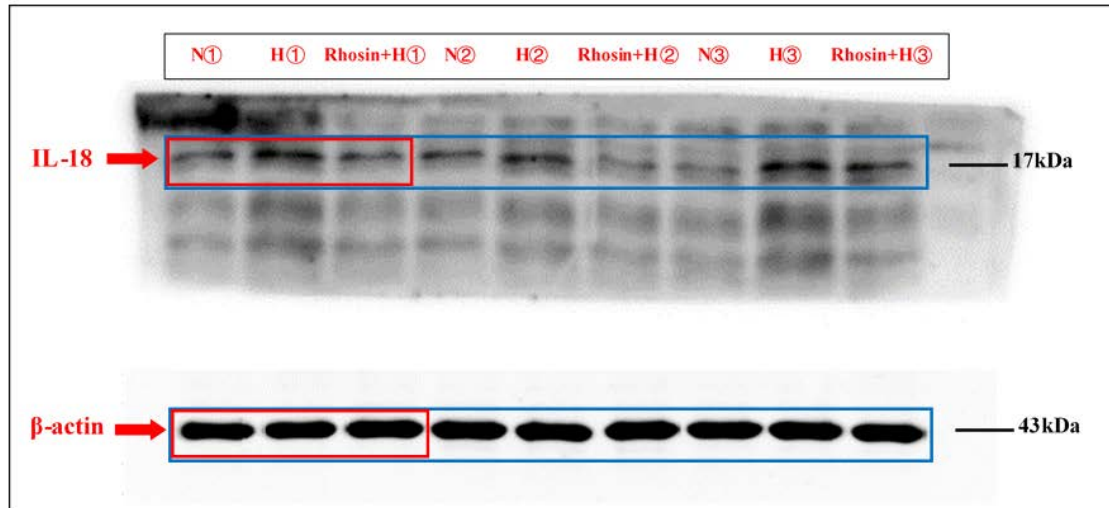


Figure 3A and 3B: IL-18



Western blot analysis showing the expression of IL-18-R α (62kDa) and IL-18-R β (68kDa) in various cell lines (N1, H1, Rhosin+H1, N2, H2, Rhosin+H2, N3, H3, Rhosin+H3) and β -actin (43kDa) as a loading control. The blots are arranged in three panels. The top panel shows IL-18-R α bands, the middle panel shows IL-18-R β bands, and the bottom panel shows β -actin bands. A red arrow on the left of each panel points to the specific band of interest. A blue box on the right of each panel highlights the bands for all cell lines. The molecular weight markers are indicated on the right side of each panel: 62kDa for IL-18-R α , 68kDa for IL-18-R β , and 43kDa for β -actin.

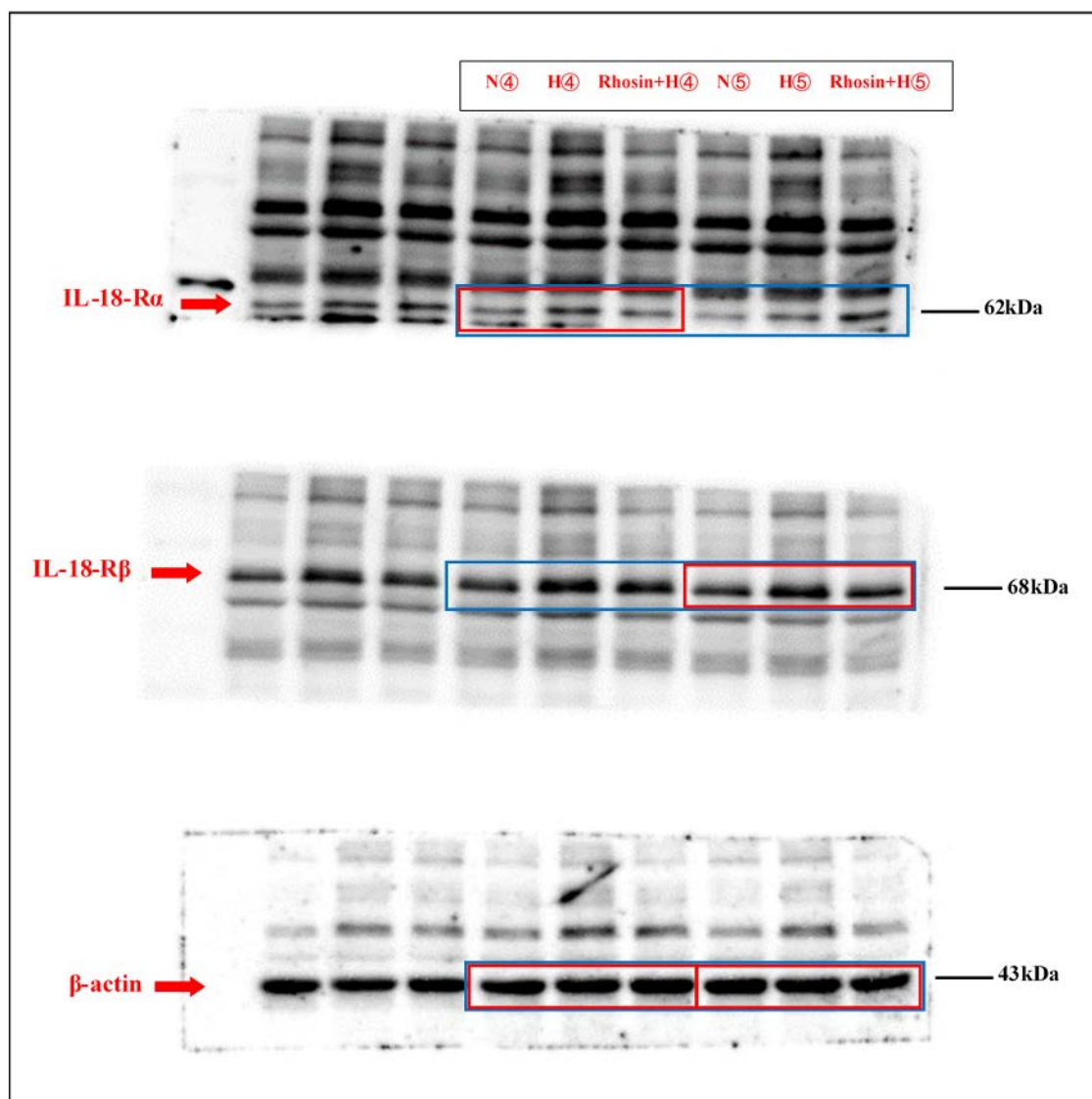
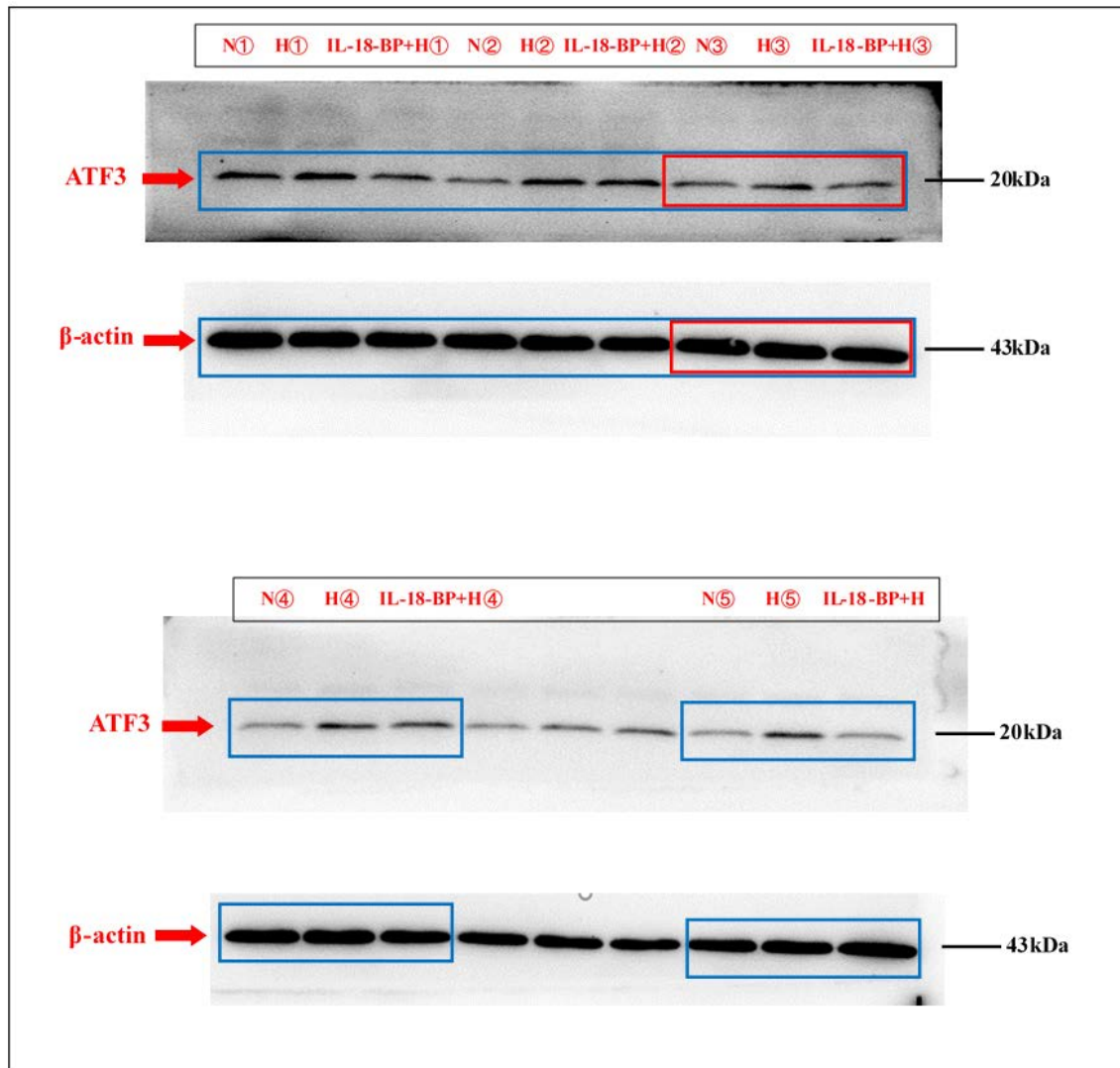


Figure 4A and 4B: ATF3



Western blot analysis of TCF3, TCF4, LEF1, and β -actin expression in HCT116 cells. The blot shows four rows of bands. The top row is labeled TCF3 (63kDa), the second row TCF4 (50kDa), the third row LEF1 (55kDa), and the bottom row β -actin (43kDa). The lanes are labeled N1, H1, IL-18-BP+H1, N2, H2, IL-18-BP+H2, N3, H3, and IL-18-BP+H3. A red box highlights the first three lanes (N1, H1, IL-18-BP+H1) for TCF4 and β -actin, and a blue box highlights the last six lanes (N2, H2, IL-18-BP+H2, N3, H3, IL-18-BP+H3) for all four proteins.

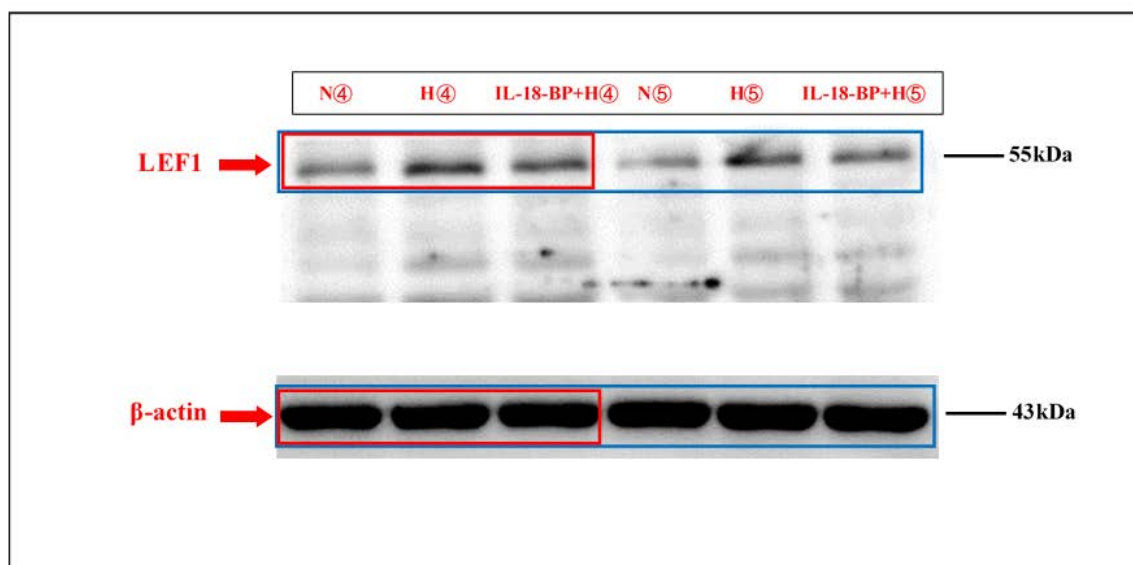
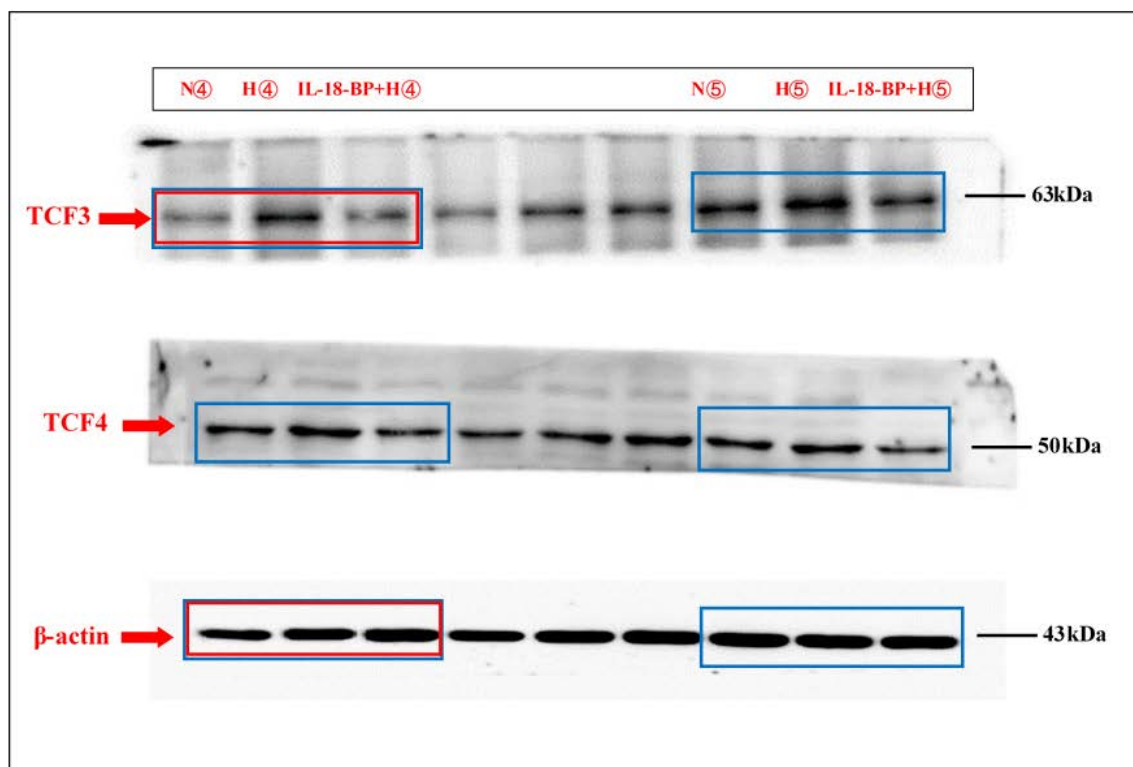


Figure S1A and S1B: IL-18

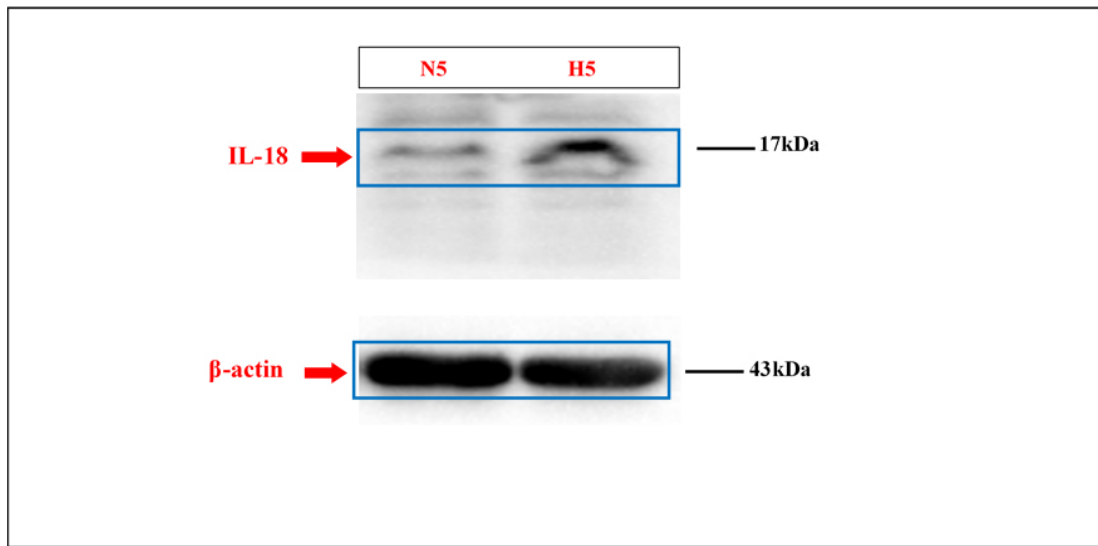
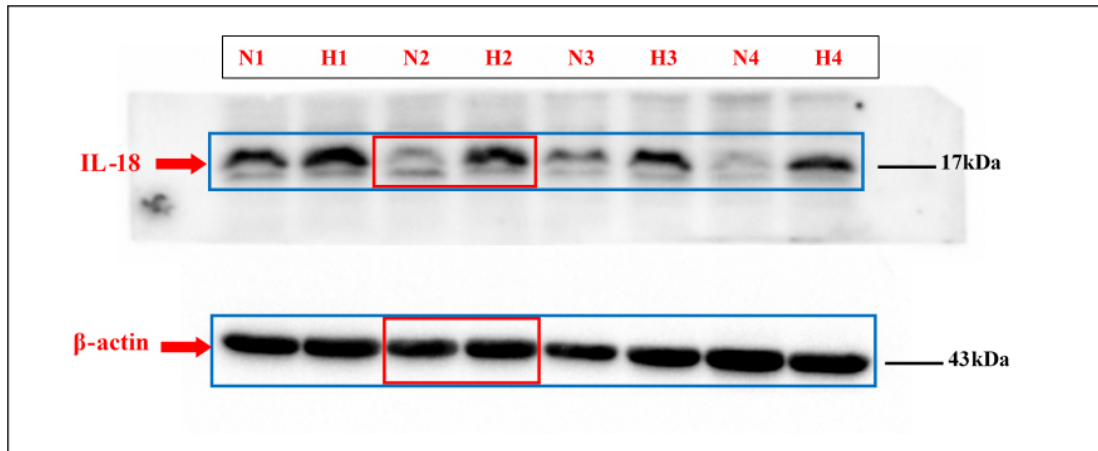


Figure S1A and S1B: IL-18-R α

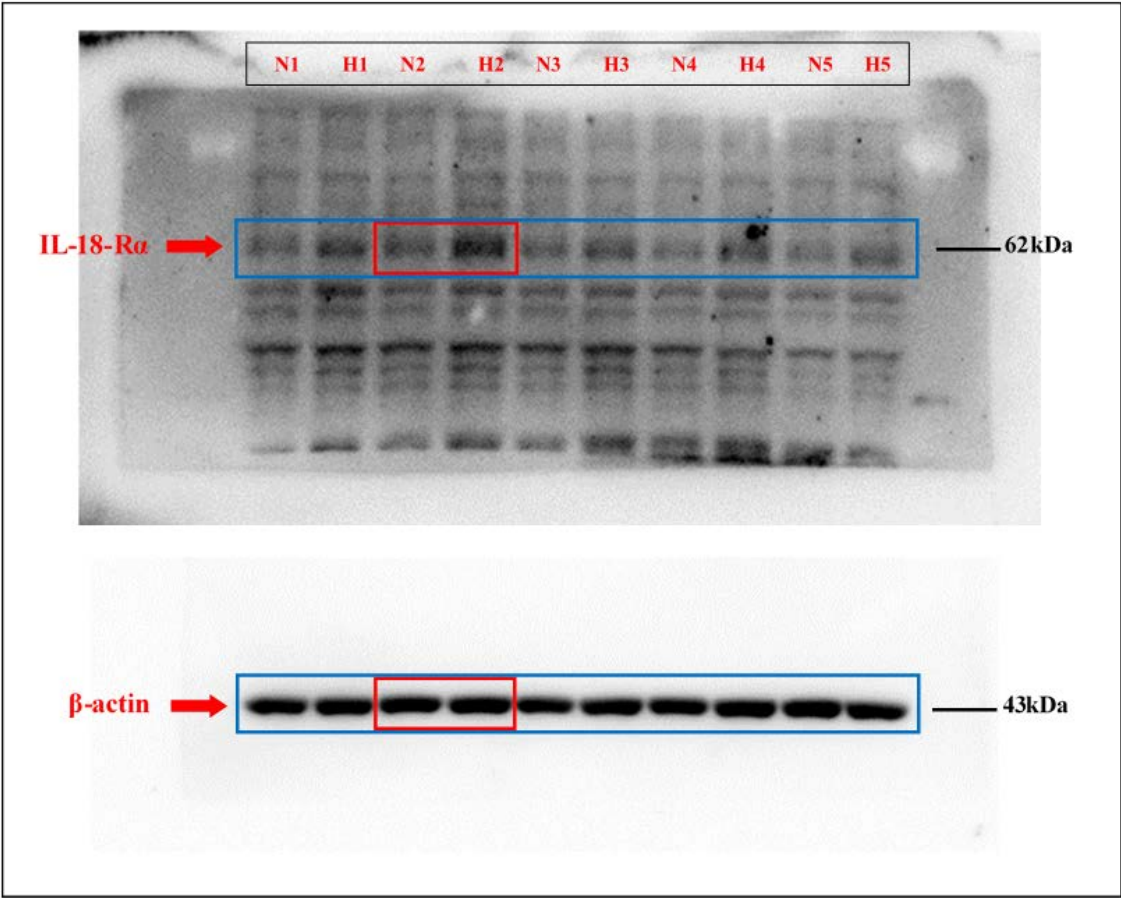


Figure S1A and S1B: IL-18-R β

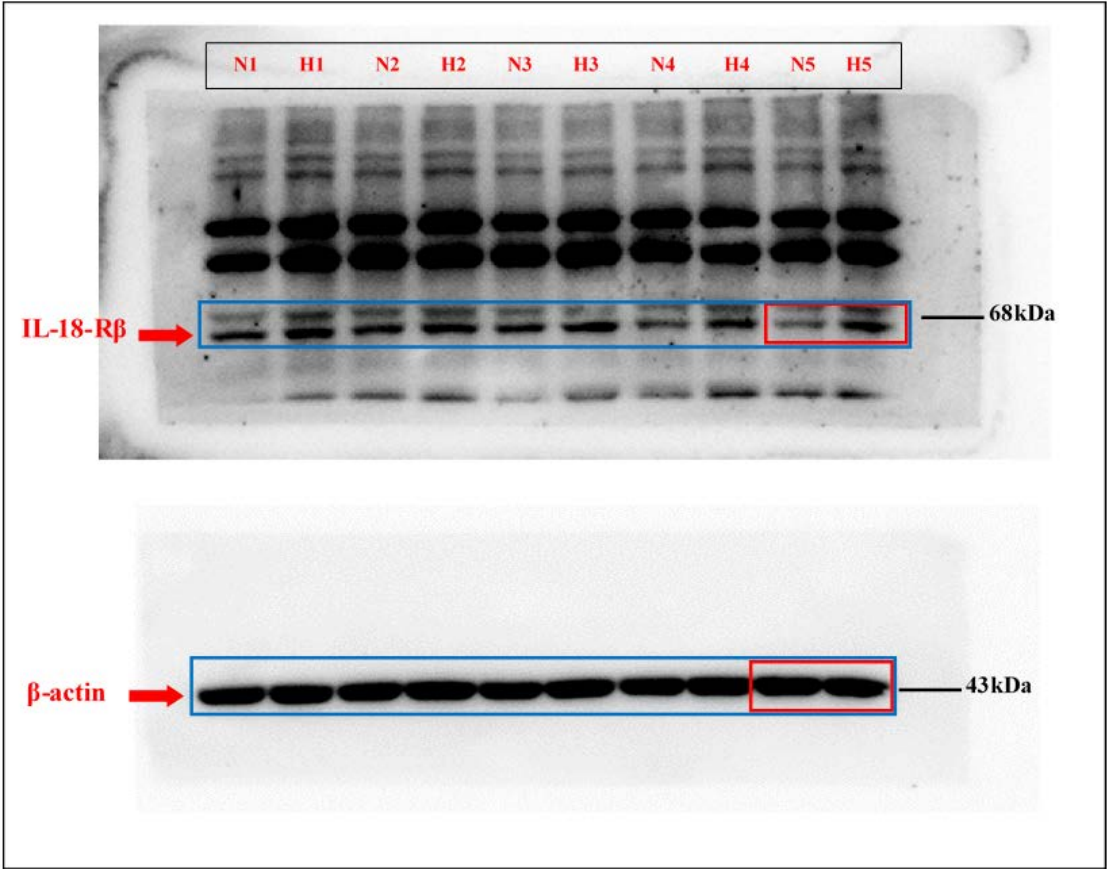
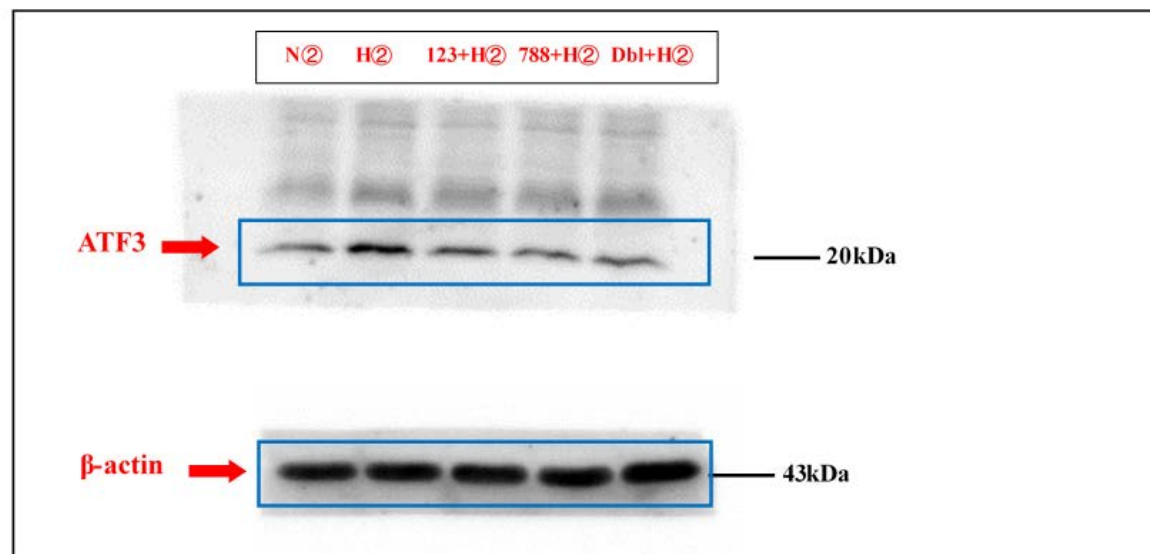
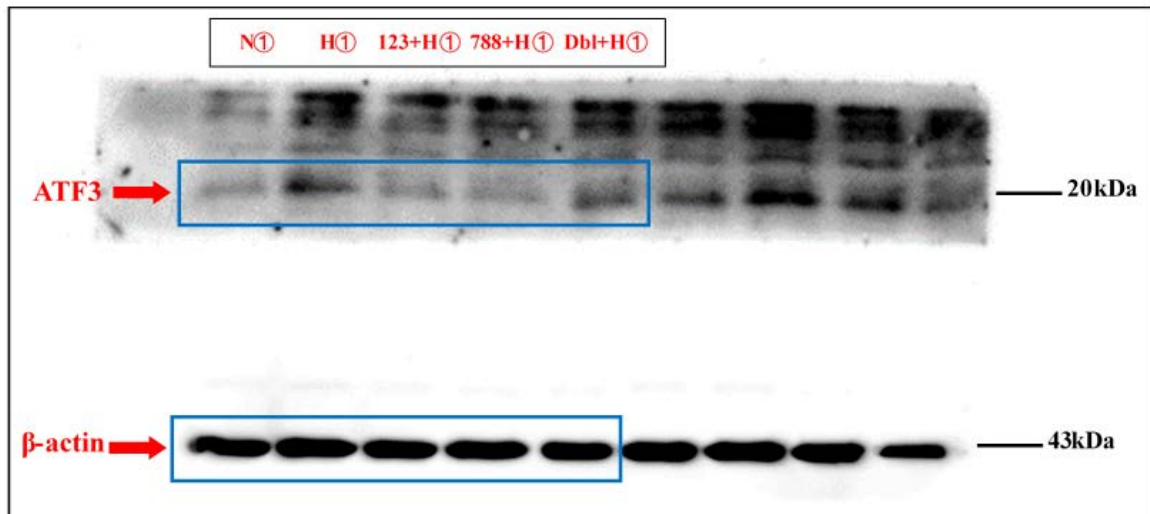


Figure S2A and S2B: ATF3



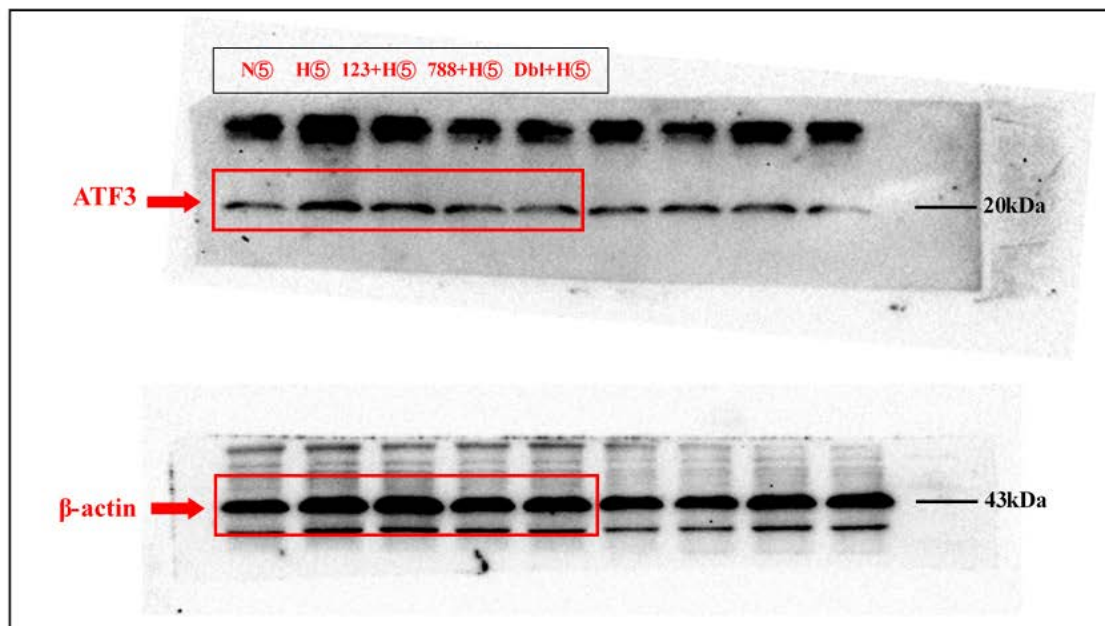
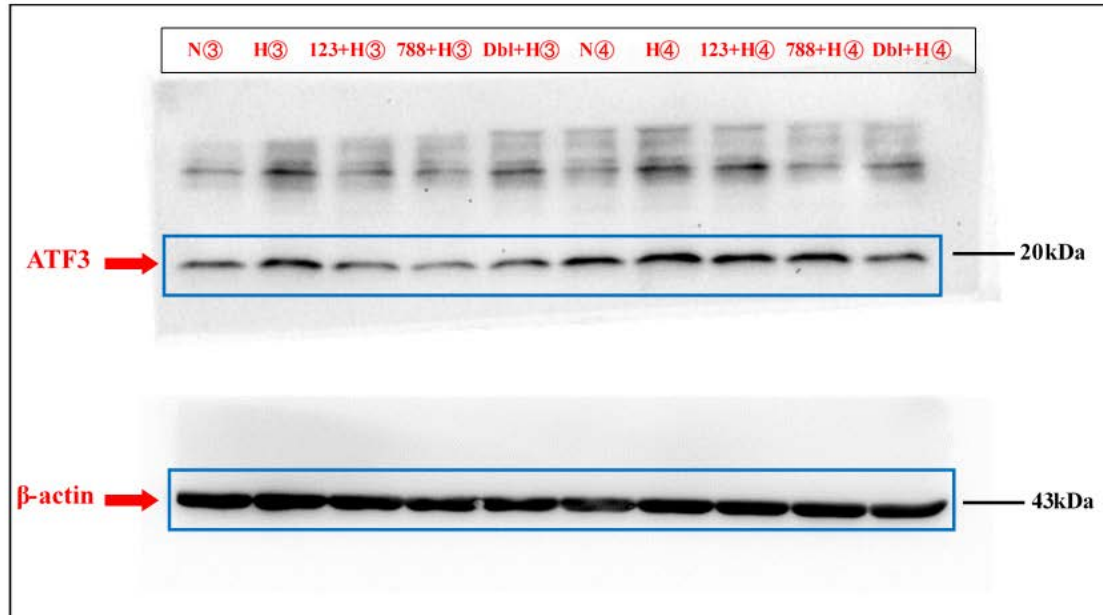
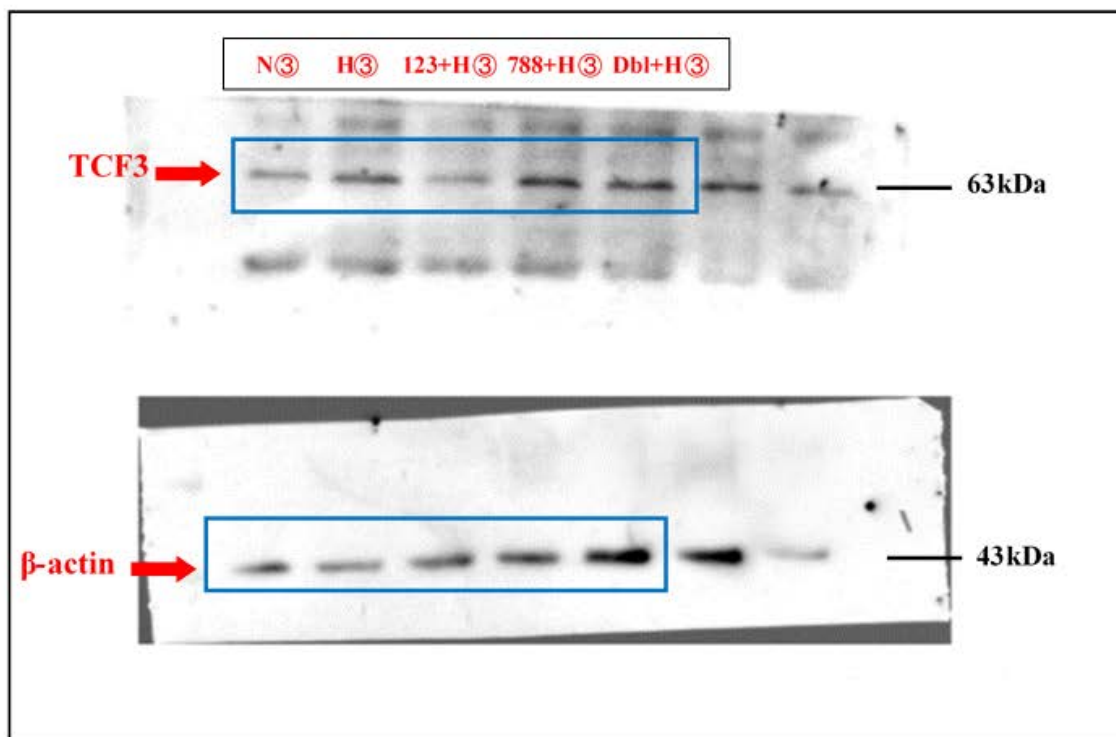
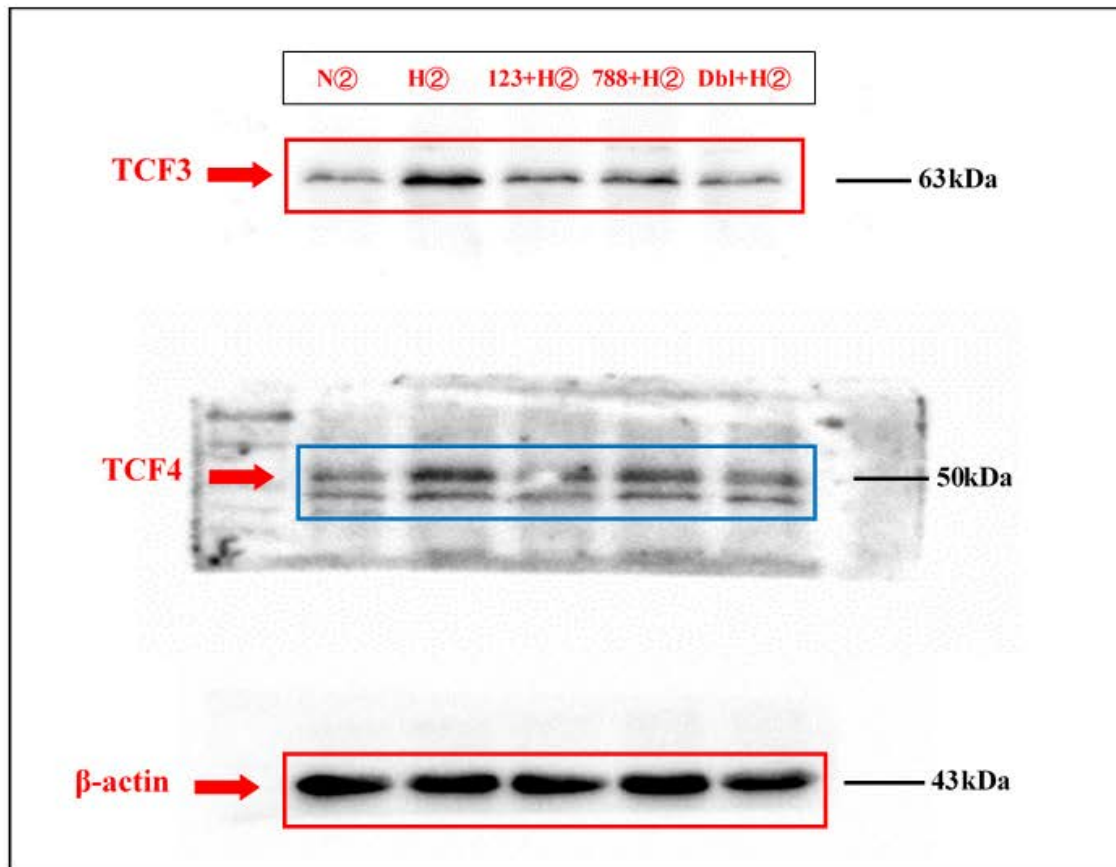


Figure S2A and S2B: TCF3, TCF4, LEF1



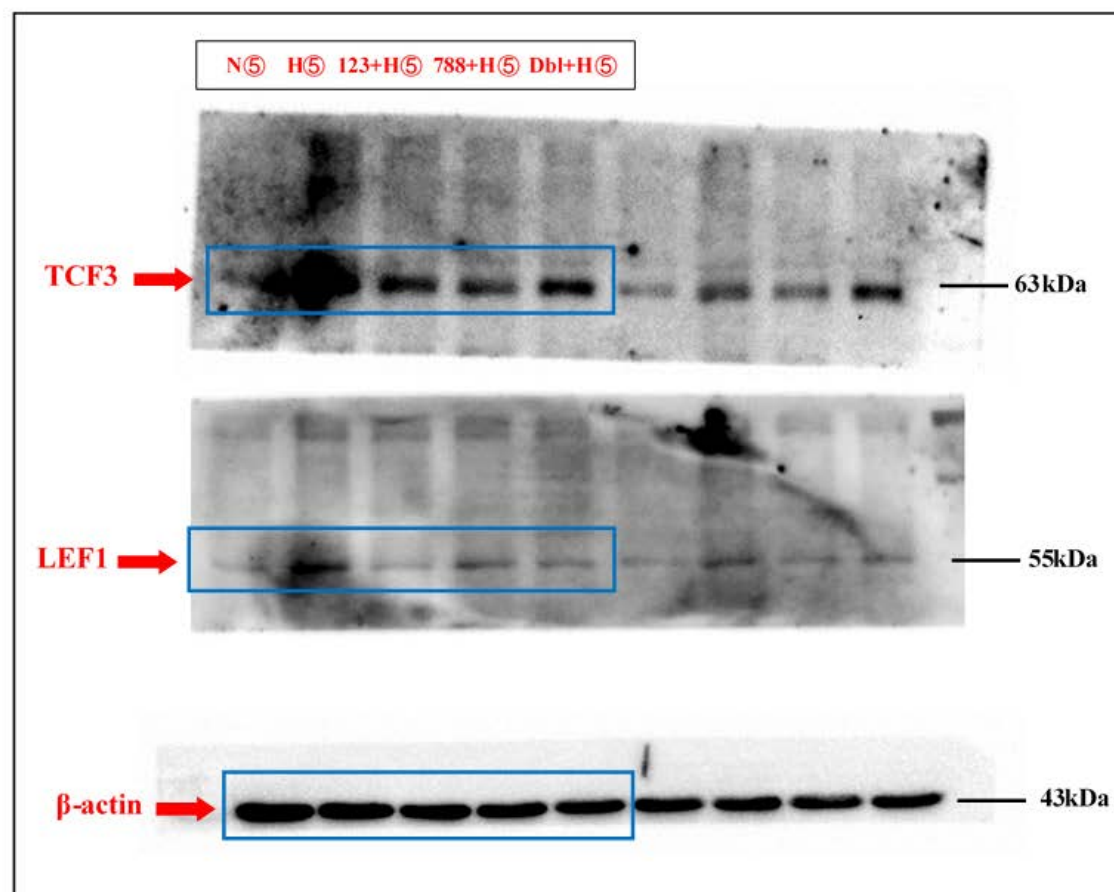
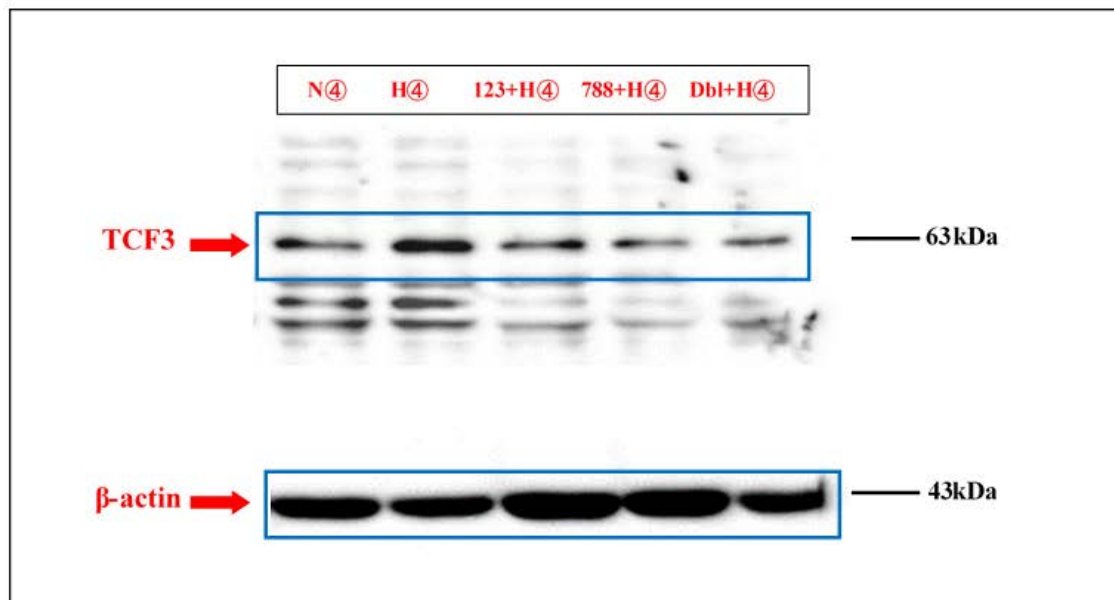


Figure S2A and S2B: TCF4

