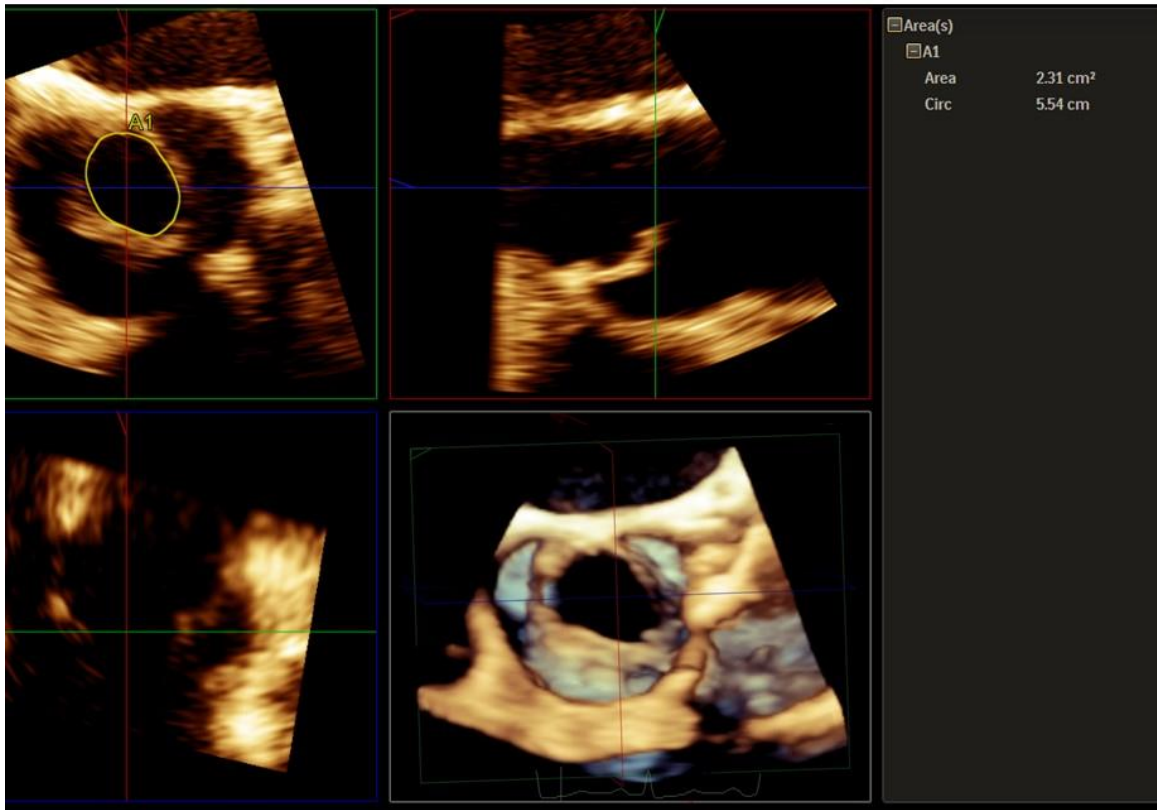


## Supplementary material

*Golińska-Grzybała K, Kabłak-Ziembicka A, Gackowski A. Unicuspid aortic valve prolapse with severe regurgitation. Pol Arch Intern Med. 2021; 131: 465-466. doi:10.33963/KP.15862.*

Please note that the journal is not responsible for the scientific accuracy or functionality of any supplementary material submitted by the authors. Any queries (except missing content) should be directed to the corresponding author of the article.



**Figure S1.** 3D TEE planimetry of the aortic valve area

**Video S1.** Mid-esophageal long axis view showing abnormal motion and partial prolapse of the aortic cusp.

**Video S2.** Mid-esophageal 4 Ch view showing severe excentric aortic regurgitation jet.

**Video S3.** 3D TEE of aortic valve

**Videos S4-S6.** Impaired longitudinal strain of the basal and mid-segments of the left ventricle in 4Ch, 2Ch, and LAX views respectively, with normal strain of the apical segments.