

Supplementary material

Nartowicz SA, Cieplucha A, Olasińska-Wiśniewska A, et al. Heartburn as the first symptom of rare cardiac tumor localization: is multimodality imaging a helpful approach? Kardiol Pol. 2021; 79: 211-212. doi:10.33963/KP.15759

Please note that the journal is not responsible for the scientific accuracy or functionality of any supplementary material submitted by the authors. Any queries (except missing content) should be directed to the corresponding author of the article.

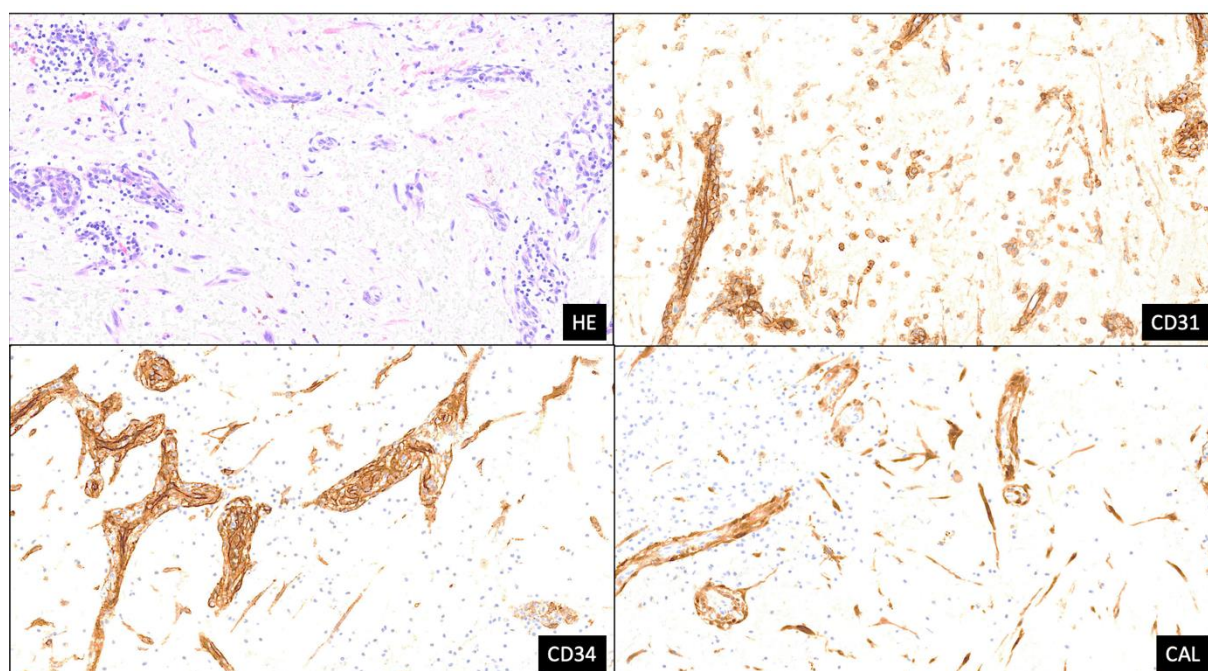


Figure S1. Cardiac myxoma. Myxoma cells embedded in myxoid stroma (H+E stain); immunohistochemical stain with calretinin (CAL), CD31, and CD34 markers (x200).

Video S1. Cardiac magnetic resonance.