

Supplementary material

Dziarmaga M, Minczykowski A, Zwanzig M, et al. Influence of increased arterial stiffness on myocardial work efficiency in patients with stable coronary artery disease. Kardiologia Pol. 2021; 79: 196-198. doi:10.33963/KP.15784

Please note that the journal is not responsible for the scientific accuracy or functionality of any supplementary material submitted by the authors. Any queries (except missing content) should be directed to the corresponding author of the article.

Table S1. Clinical characteristics of studied 89 patients with coronary artery disease

Qualitative data		
	N	%
Previous myocardial infarction	22	24.7
PCI	30	33.7
CABG	2	2.2
Hypertension	75	84.3
Diabetes	24	27.0
Current smoker	29	32.6
β Blocker	80	89.9
Aspirin	82	92.1
Clopidogrel	47	52.8
ACE inhibitor	45	50.6
ARB	29	32.6
Diuretics	39	43.8
Calcium-channel blocker	24	27.0
Statins	86	96.6
Metformin	24	27.0

Insulin	7	7.9
Quantitative data		
	Mean (SD)	
Age, years	63.3 (9.3)	
BMI, kg/m ²	27.9 (3.9)	
Systolic blood pressure, mmHg	126.5 (17.7)	
Diastolic blood pressure, mmHg	74.2 (9.3)	
PWV, m/s	8.7 (3.3)	
GWI, mmHg%	1758.8 (484.7)	
GCW, mmHg%	1987.1 (562.5)	
GWW, mmHg%	154.6 (94.9)	
GWE, %	90.7 (5.6)	
LVEDV, ml/m ²	91.8 (42.5)	
LVESV, ml/m ²	37.9 (28.9)	
LVEF, %	59.9 (12.6)	
GLPSS, %	-16.5 (4.0)	
LV mass index, g/m ²	117.5 (41.8)	
E/E', cm/sek	9.1 (3.9)	

ACE - angiotensin-converting enzyme, ARB - angiotensin II receptor blocker, BMI - body mass index, CABG - coronary artery bypass graft, E/E' - ratio between early mitral inflow velocity and mitral annular early diastolic velocity, GLPSS - global longitudinal peak systolic strain of the left ventricle, GCW - global myocardial constructive work, GWE - global myocardial work efficiency, GWI - global myocardial work index, GWW - global myocardial wasted work, LVEDV - left ventricular end diastolic volume, LVEF - left ventricular ejection fraction, LVESV - left ventricular end systolic volume, PCI - percutaneous coronary intervention.

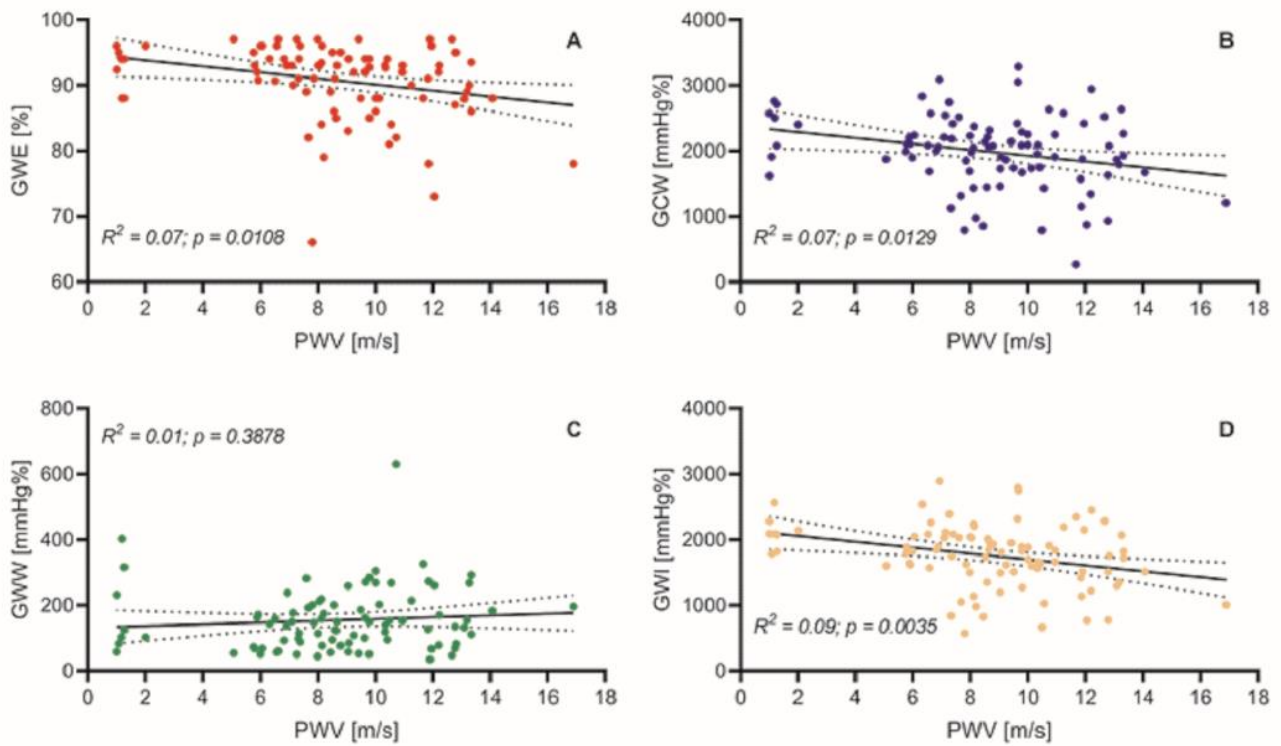


Figure S1. Unadjusted univariate linear regression models for the relation between PWV as an independent value and indices of myocardial work, i.e. Global Work Efficiency (Panel A), Global Constructive Work (Panel B), Global Wasted Work (Panel C), and Global Work Index (Panel D).