

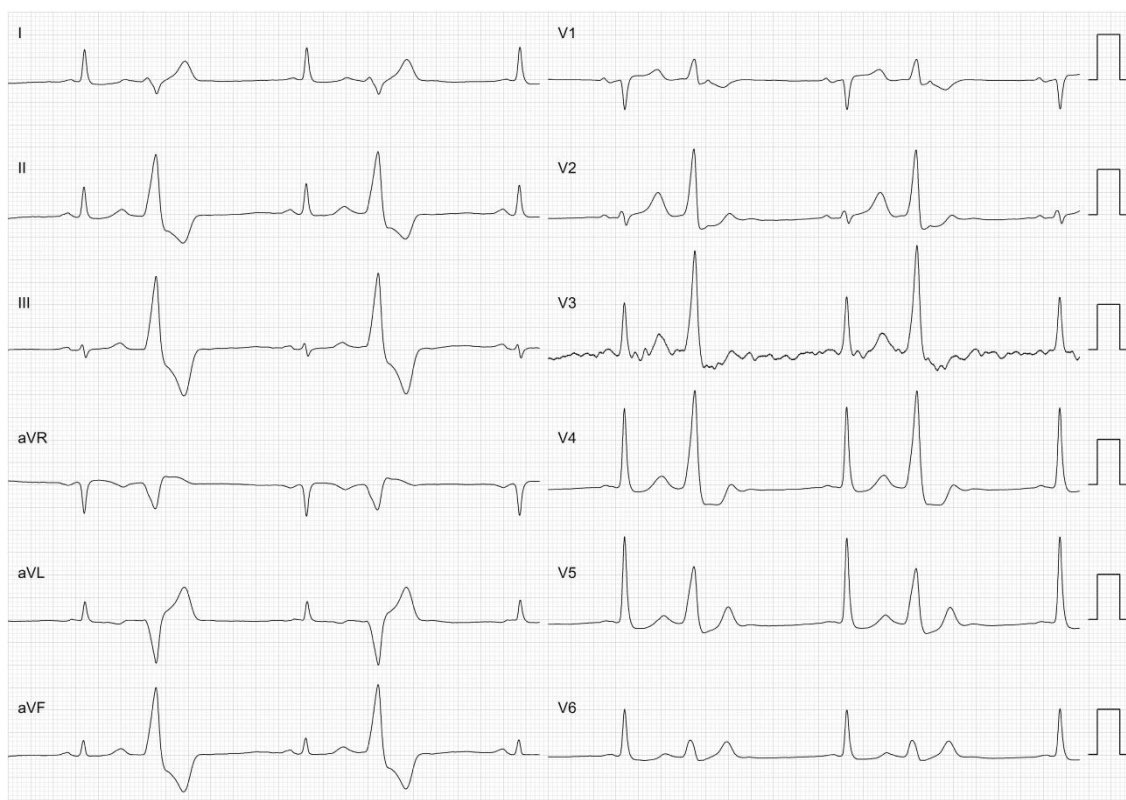
## Supplementary material

---

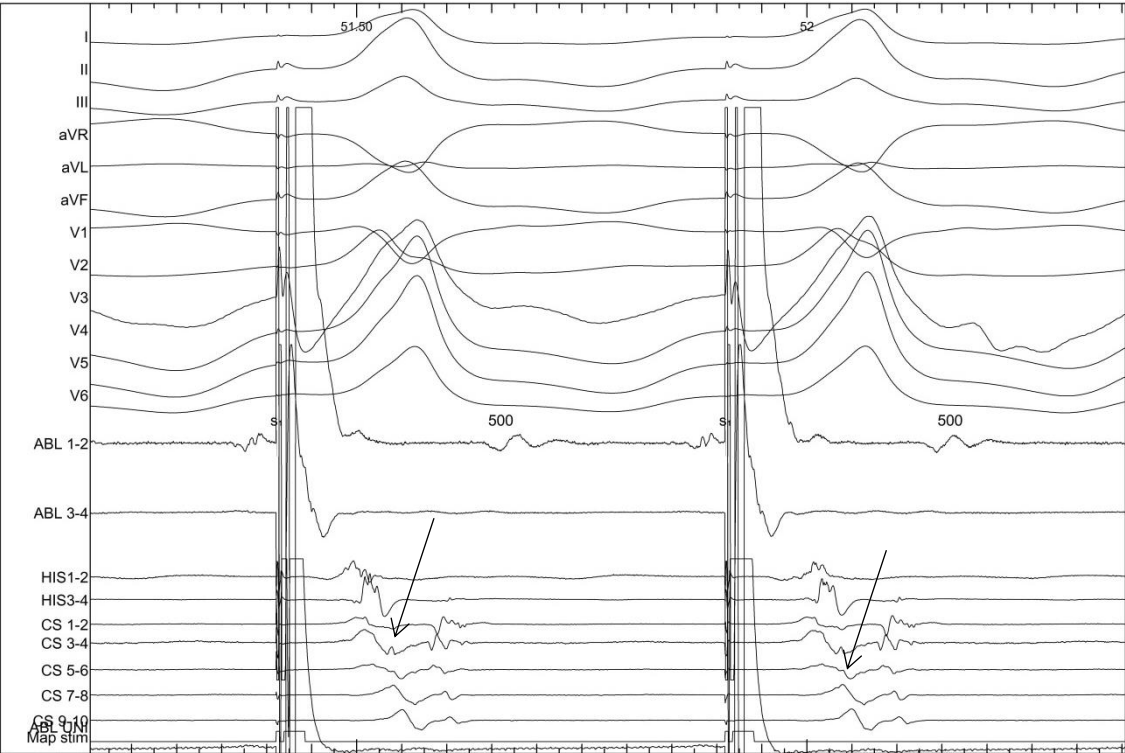
*Farkowski MM, Gardziejczyk P, Maciąg A, Pytkowski M. Utility of a novel 3F coronary sinus catheter during simultaneous ablation of the left anterolateral accessory pathway and left ventricular summit premature ventricular contractions. Kardiol Pol. 2021; 79: 85-86. doi:10.33963/KP.15684*

Please note that the journal is not responsible for the scientific accuracy or functionality of any supplementary material submitted by the authors. Any queries (except missing content) should be directed to the corresponding author of the article.

**Figure S1.** Surface ECG at the beginning of the ablation.

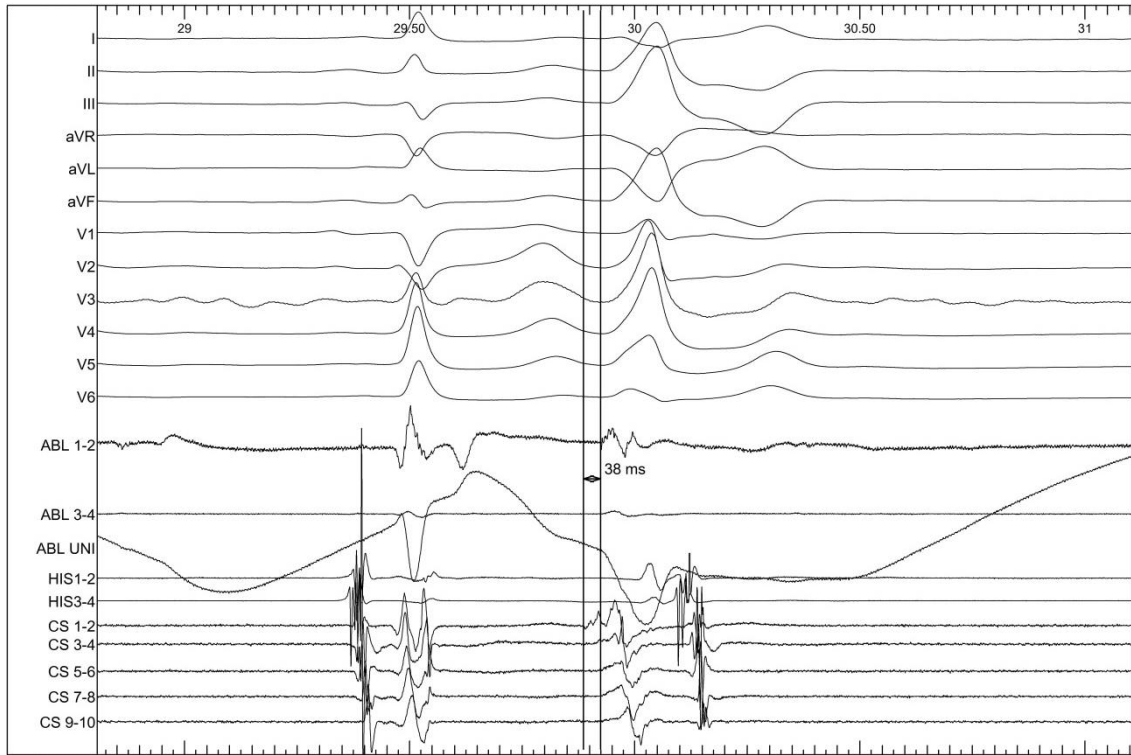


**Figure S2.** Left ventricle basal pacing revealing the accessory pathway potential (CS 3-4 and 5-6, arrows).



**Figure S3.** Local activation time (A) and low pace-map score (B) according to the automated template matching in the area of the successful ablation of premature ventricular contractions.

(A)



(B)

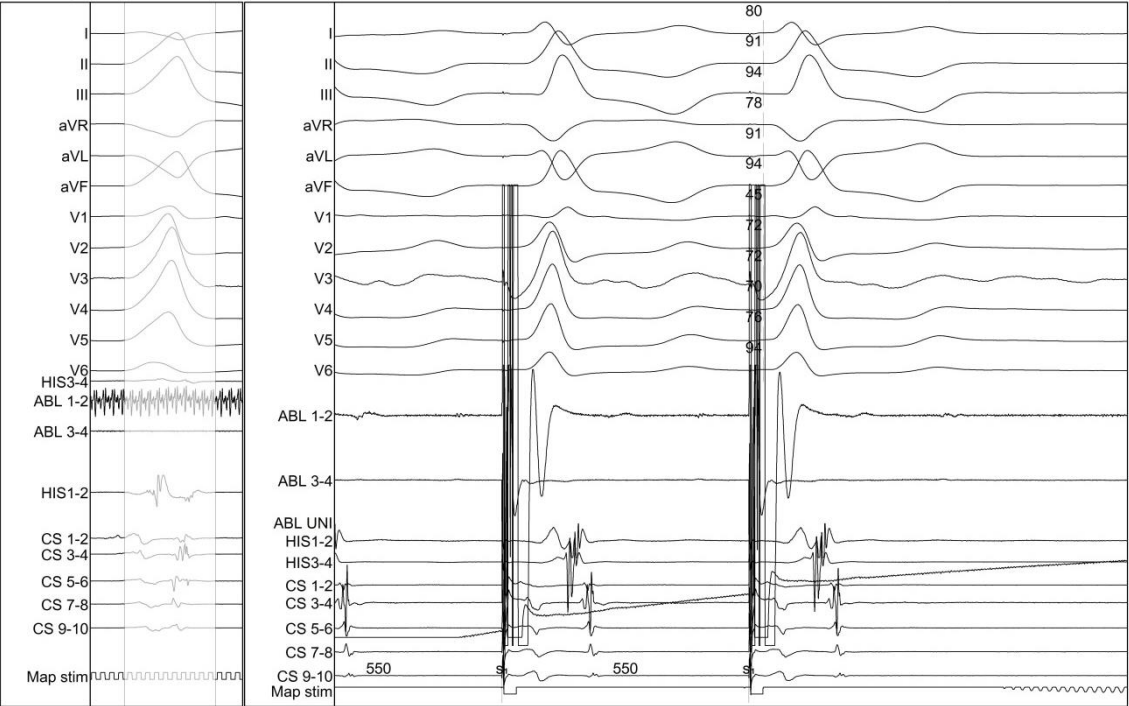


Figure S4. The final lesion set on the CARTO map.

