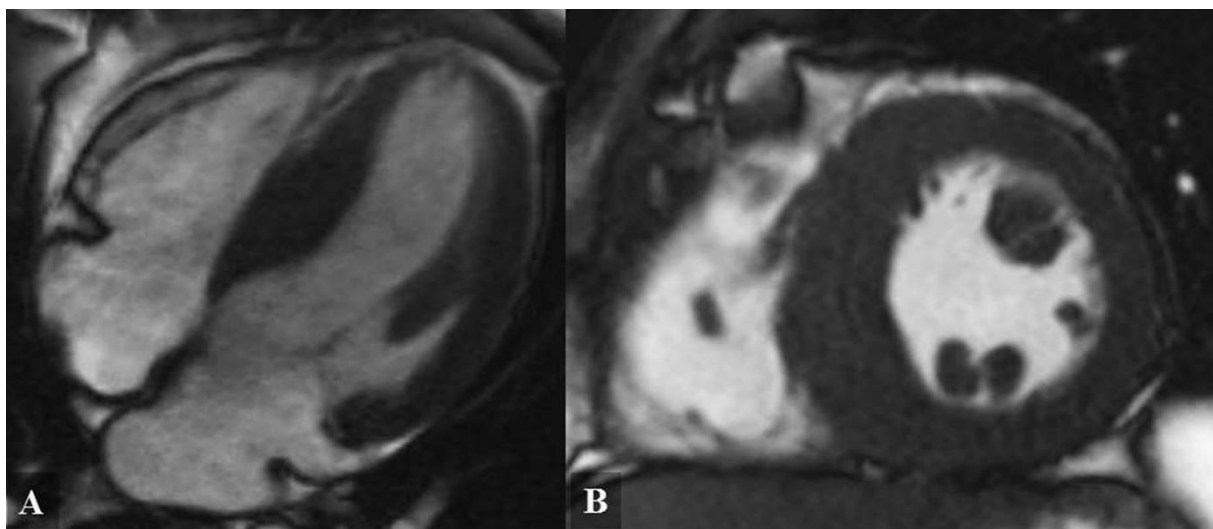


Supplementary material

Tyczyński P, Michałowska I, Dąbrowski M, et al. Hypertrophic cardiomyopathy and anomalous origin of the left coronary artery: a rare coexistence. Kardiol Pol. 2020; 78: 1189-1190. doi:10.33963/KP.15553

Please note that the journal is not responsible for the scientific accuracy or functionality of any supplementary material submitted by the authors. Any queries (except missing content) should be directed to the corresponding author of the article.

Supplementary Figure S1.



Cardiac magnetic resonance showing asymmetric hypertrophy of the interventricular septum.

A) Four chamber view; B) Short axis view.