

Supplementary material

Zienciuk-Krajka A, Daniłowicz-Szymanowicz L, Dorniak K, et al. Left ventricular noncompaction cardiomyopathy: diagnostic and therapeutic dilemmas. *Kardiol Pol.* 2020; 78: 1053-1054. doi:10.33963/KP.15503

Please note that the journal is not responsible for the scientific accuracy or functionality of any supplementary material submitted by the authors. Any queries (except missing content) should be directed to the corresponding author of the article.

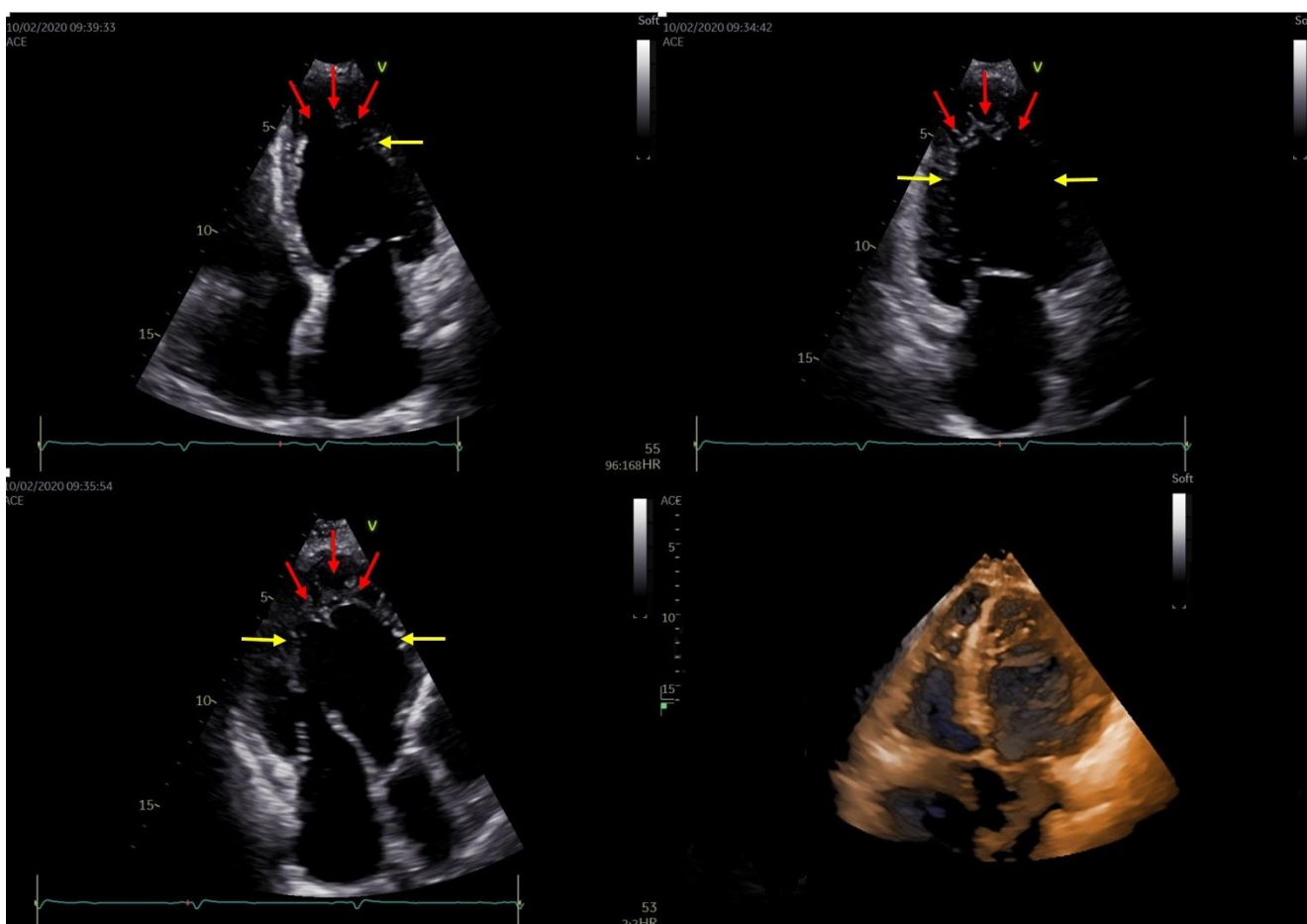


Figure S1. Echocardiographic four-chamber (4CH), two-chamber (2CH), three-chamber (3CH), and three-dimensional (3D) views of left ventricular non-compaction on two-dimensional transthoracic echocardiogram. Red arrows indicate non-compacted myocardium in the apex and apical segments of all walls. Yellow arrows indicate non-compacted myocardium in middle segments of the inferior, inferolateral, lateral, and anterior wall. Blue and purple line presents non-compacted (NC) and compacted (C) layers of the myocardium respectively with NC/C ratio of 3:1.

Episode: VF

VT/VF Episode 4 of 8
Page 2 of 3

Dec 16, 2016 21:45

1: V Sense Amp AutoGain (0.4 mm/mV)
2: Discrimination AutoGain (1.3 mm/mV)

3: Markers

Sweep Speed: 25 mm/s

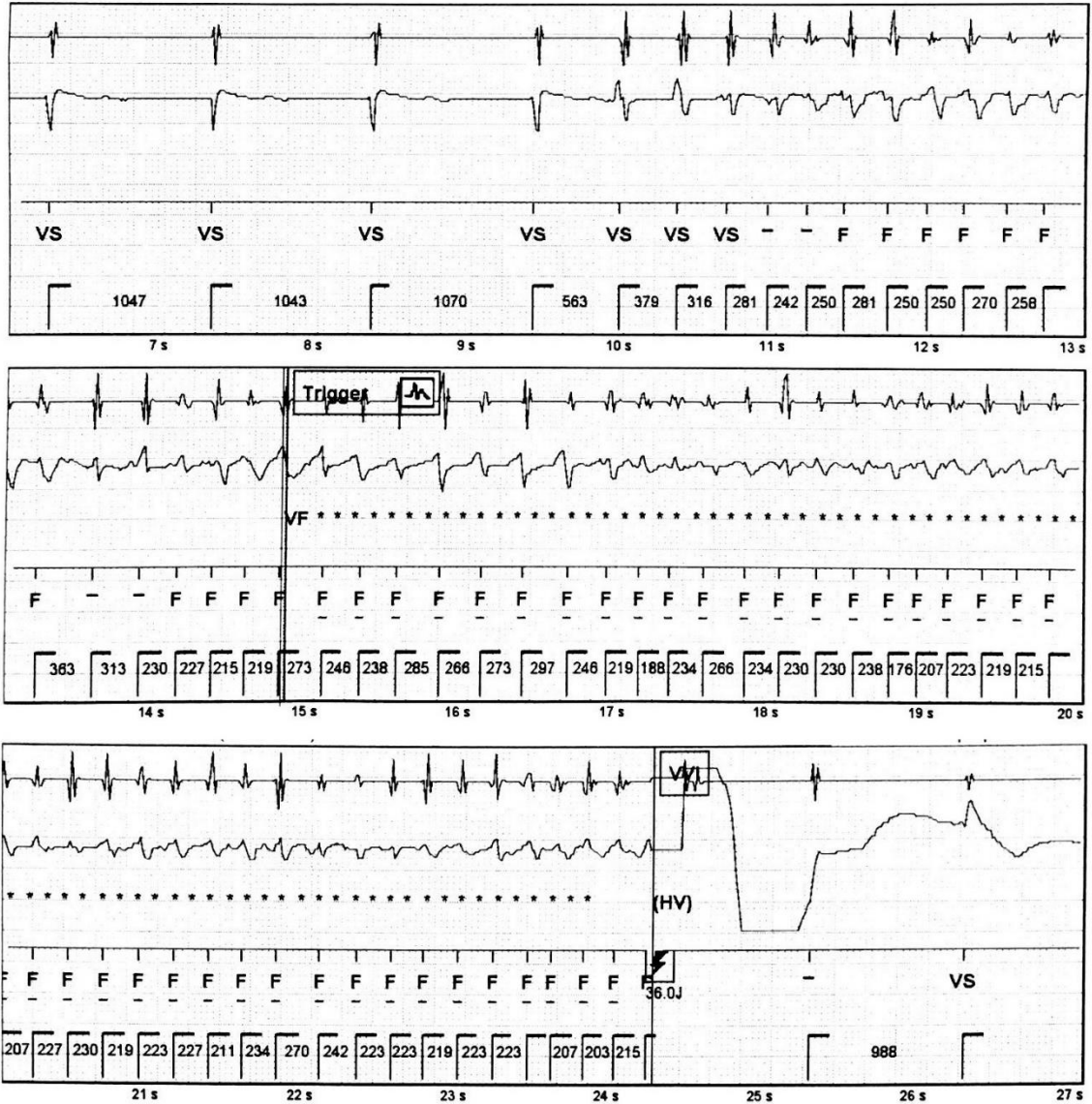


Figure S2. Intracardiac electrogram of the polymorphic VT/VF episode successfully terminated by the ICD