

Supplementary material

Biełka A, Kalinowski M, Hawranek M, et al. Mechanical circulatory support restores eligibility for heart transplant in patients with significant pulmonary hypertension. Kardiologia Polska. 2020; 78: 1008-1014. doi:10.33963/KP.15518

Please note that the journal is not responsible for the scientific accuracy or functionality of any supplementary material submitted by the authors. Any queries (except missing content) should be directed to the corresponding author of the article.

Table S1. Patient characteristics (n = 106).

Patient characteristic	mean [SD], range
Age at CF-LVAD implantation	51.8 years [12.0], 16.7-72.4
Duration of CF-LVAD support	661 days [520], 1-2068 median-549 days
	n (%)
INTERMACS profile at CF-LVAD implantation	
1	20 (18.9)
2	24 (22.6)
.....3	35 (33.0)
4	12 (11.3)
5	6 (5.7)
.....6	3 (2.8)
.....7	6 (5.7)
Type of CF-LVAD implanted	
HeartMate 2	9 (8.5)
HeartMate 3	38 (35.8)
HeartWare	59 (55.7)

Ischemic etiology of heart failure	54 (50.9)
Dilative cardiomyopathy	34 (32.1)
History of infection before heart failure symptoms	11 (10.4)
Inotropes at LVAD implantation	79 (74.5)
Diabetes mellitus	32 (30.2)
Arterial hypertension	43 (40.6)
Chronic kidney disease stages 3 or more	49 (46.2)
Chronic obstructive pulmonary disease	5 (4.7)
Obstructive sleep apnea syndrome	1 (0.9)
Atrial fibrillation/flutter	60 (56.6)
Prior ischemic stroke	11 (10.4)

Table S2. Pre-LVAD (n=94) and post-LVAD hemodynamic measurements (n=31).

Hemodynamic measurement	Pre-LVAD Mean [SD], range	Post-LVAD Mean [SD], range
Mean PAP, mmHg	30.4 [9.5], 7-54	17.7 [4.1], 10-27
PCWP, mm Hg	20.5 [8.1], 8-54	10.6 [4.9], 4-27
TPG, mm Hg	10.0 [5.1], 3-26	7.6 [2.4], 2-12
PVR, WU	2.6 [1.6], 0.6-10.0	1.5 [0.5], 0.4-2.5
CO, l/min	4.2 [1.0], 2.0-7.8	5.2 [1.1], 2.8-8.4
CI, l/min/m ²	2.1 [0.5], 1.2-3.7	2.6 [0.5], 1.5-4.0

Figure S1. Probability of survival during CF-LVAD support depending on pre-LVAD mPAP (mean pulmonary artery pressure) in the selected group of patients in whom complete data on right heart catheterization before and after LVAD implantation were available (n = 28).

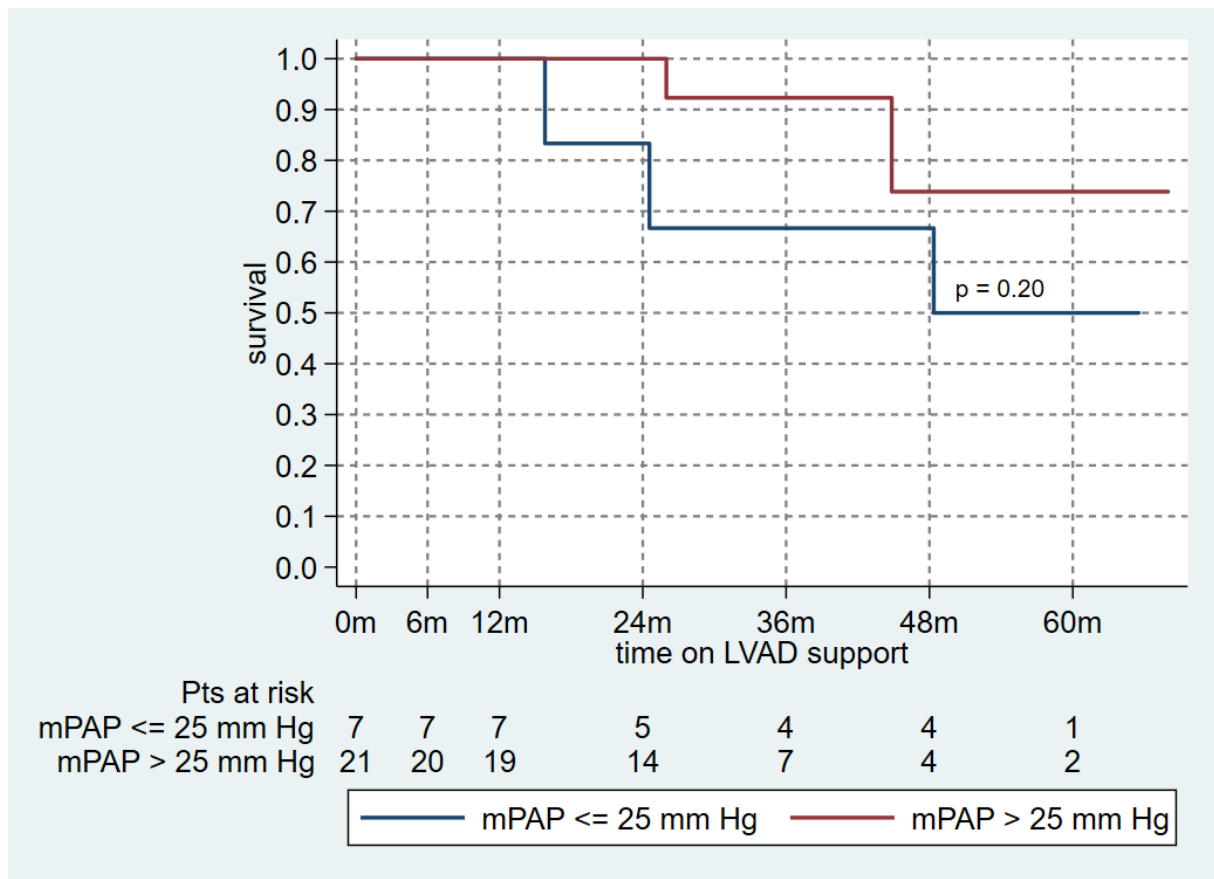


Figure S2. Probability of survival during CF-LVAD support depending on pre-LVAD PVR (pulmonary vascular resistance) in the selected group of patients in whom complete data on right heart catheterization before and after LVAD implantation were available (n = 28).

