

Supplementary material

Maciąg A, Farkowski M, Pytkowski M. Identification of the ventricular tachycardia circuit using the Advisor HD Grid multielectrode mapping catheter. *Kardiol Pol.* 2020; 78: 928-929. doi:10.33963/KP.15423

Please note that the journal is not responsible for the scientific accuracy or functionality of any supplementary material submitted by the authors. Any queries (except missing content) should be directed to the corresponding author of the article.

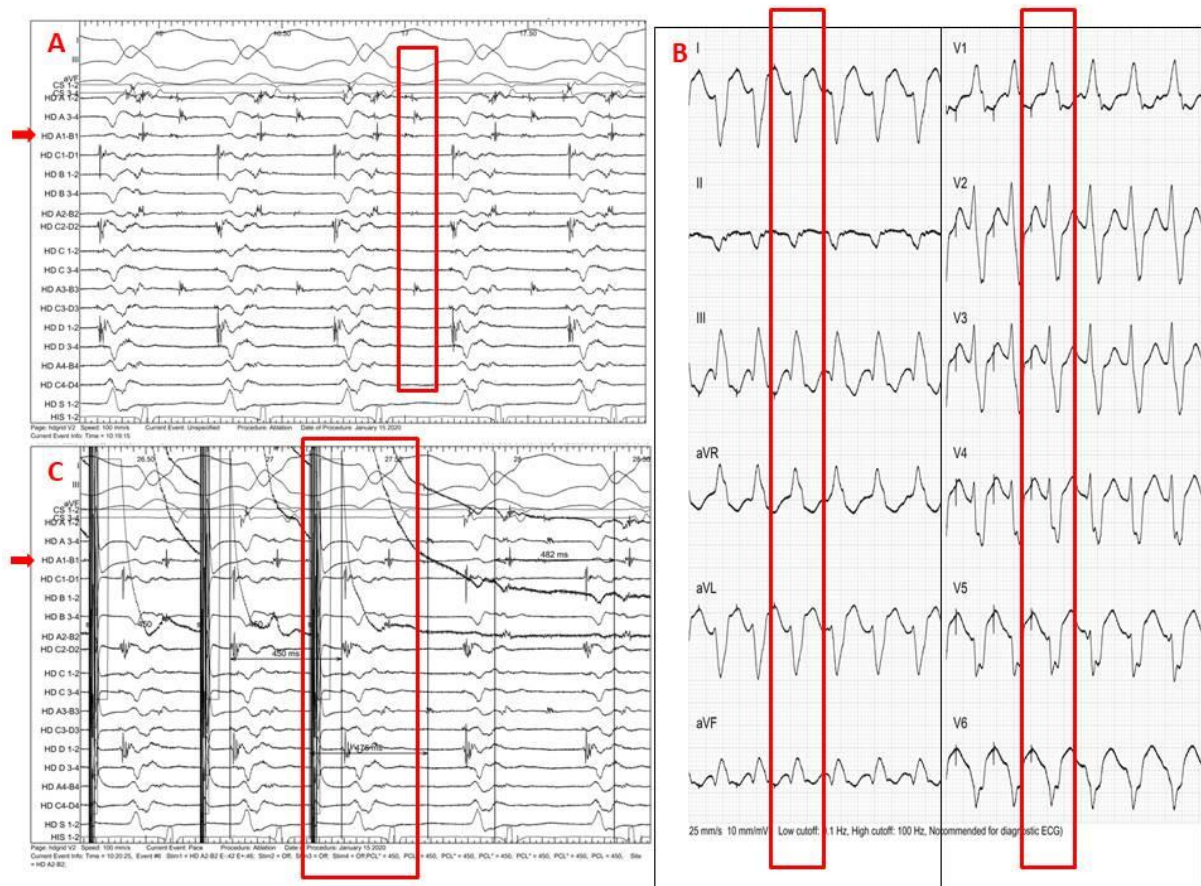


Figure S1. A: The multicomponent low amplitude intracardiac electrocardiograms. The potential selected for pacing marked by the red box. Entrainment mapping confirmed the identification of the critical isthmus by demonstrating both perfect concealed fusion Fig S1 B and post pacing interval Fig S1 C. The red box pointed the last paced beat.

Pacing channel HD A1-B1 pointed by red arrow.

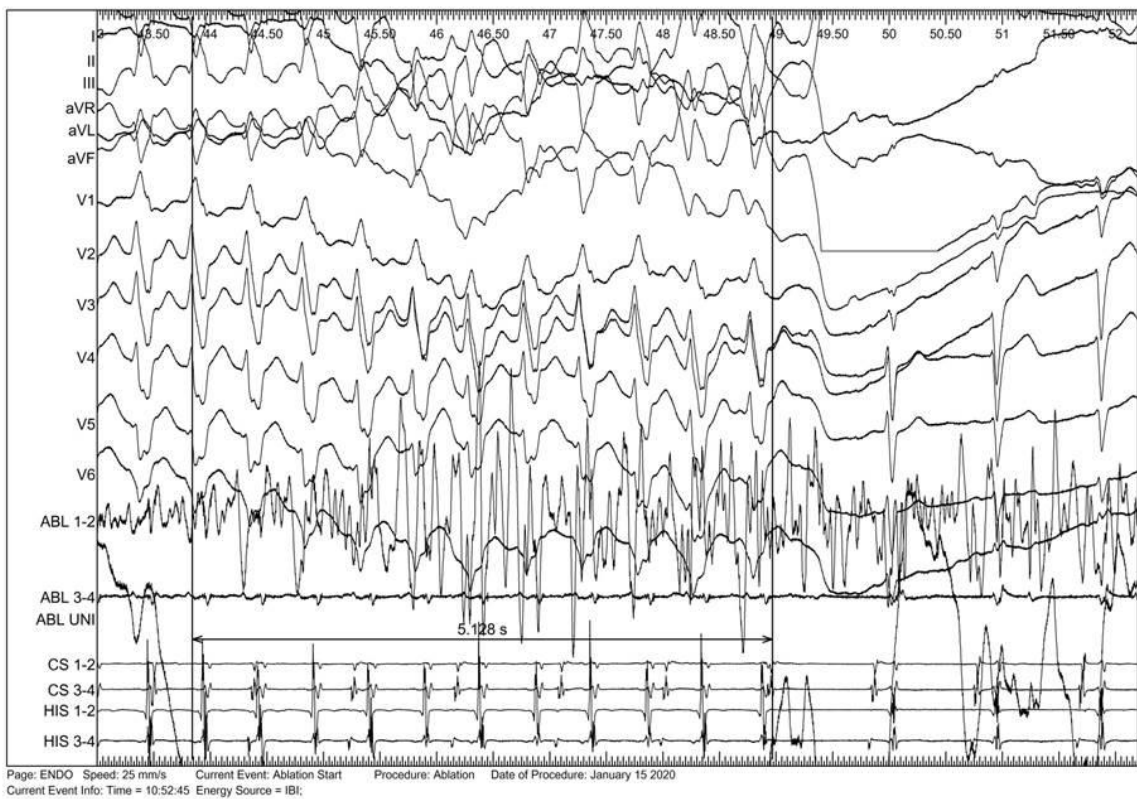


Figure S2. Termination of the ventricular tachycardia during ablation. The application applied in the point paced above.

Video S1. The recording of the ventricular tachycardia propagation. The red point on the lateral wall marked the ablation site with termination of the ventricular tachycardia.