

Supplementary material

Lee CW, Sung SH, Huang WM, et al. Posterior mitral leaflet prolapse with the posteriorly directed jet: feasibility of the MitraClip procedure. *Kardiol Pol.* 2020; 78: 599-600.
doi:10.33963/KP.15306

Please note that the journal is not responsible for the scientific accuracy or functionality of any supplementary material submitted by the authors. Any queries (except missing content) should be directed to the corresponding author of the article.

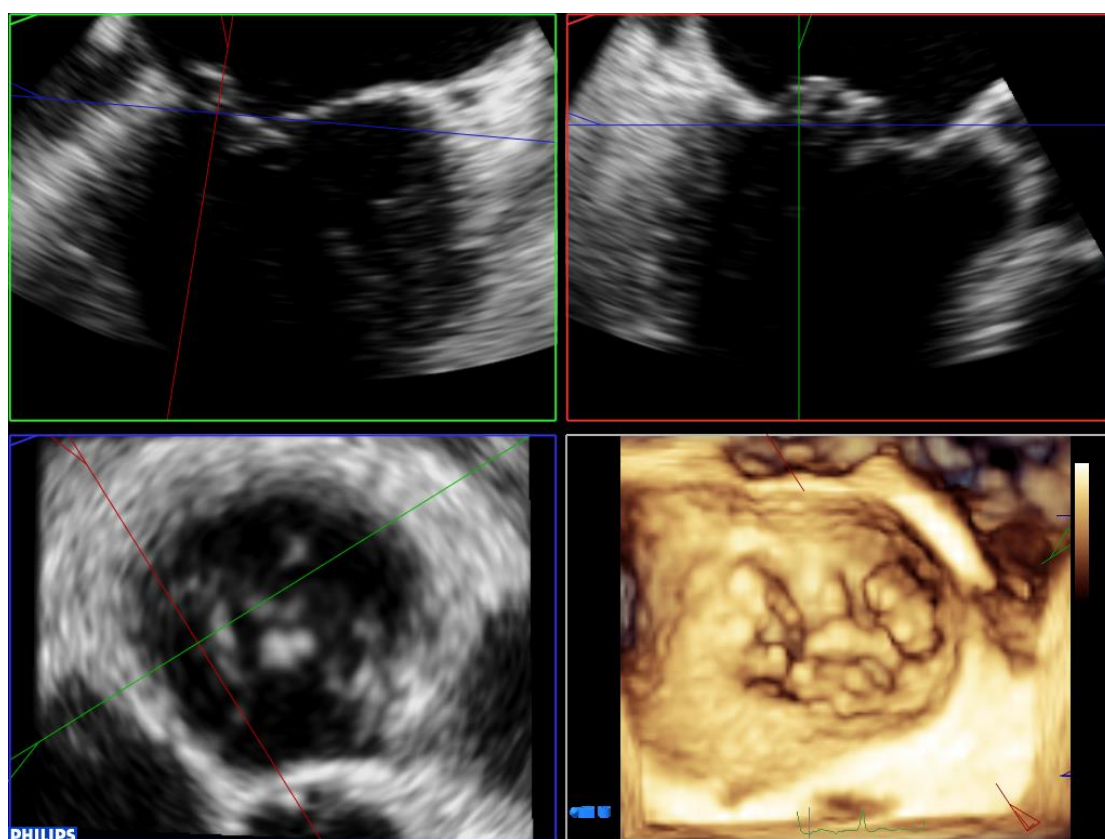


Figure S1. By using 3D reconstruction, the coaptation line was crossed by green line and the true orthogonal plane was showed in red box.