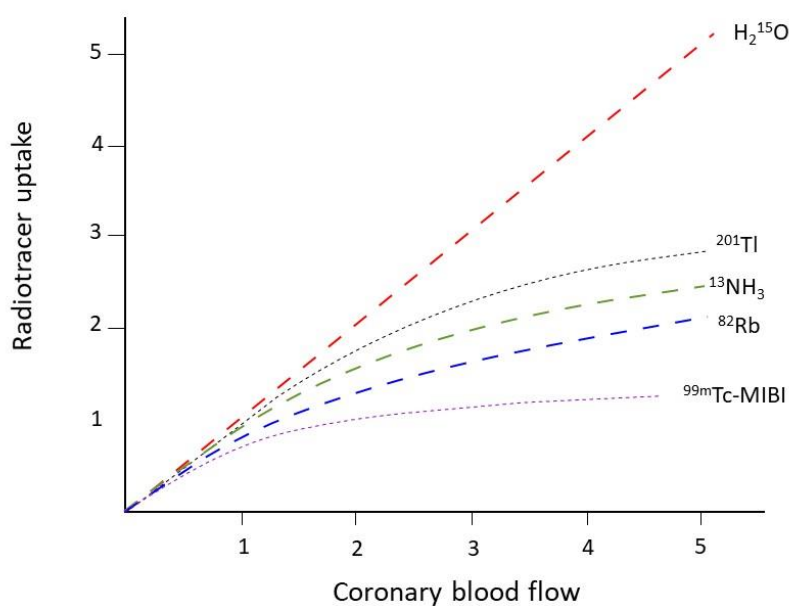


## Supplementary material

---

Cegła P, Cieplucha A, Pachowicz M, et al. Nuclear cardiology: an overview of radioisotope techniques used in the diagnostic workup of cardiovascular disorders. *Kardiol Pol.* 2020; 78: 520-528. doi:10.33963/KP.15396

Please note that the journal is not responsible for the scientific accuracy or functionality of any supplementary material submitted by the authors. Any queries (except missing content) should be directed to the corresponding author of the article.



**Figure S1.** Relations between the coronary blood flow and myocardial radiotracer uptake.

$H_2^{15}O$  - oxygen 15 labeled with water,  $^{13}NH_3$  - nitrogen 13 labeled with ammonia,  $^{82}Rb$  – rubidium isotope