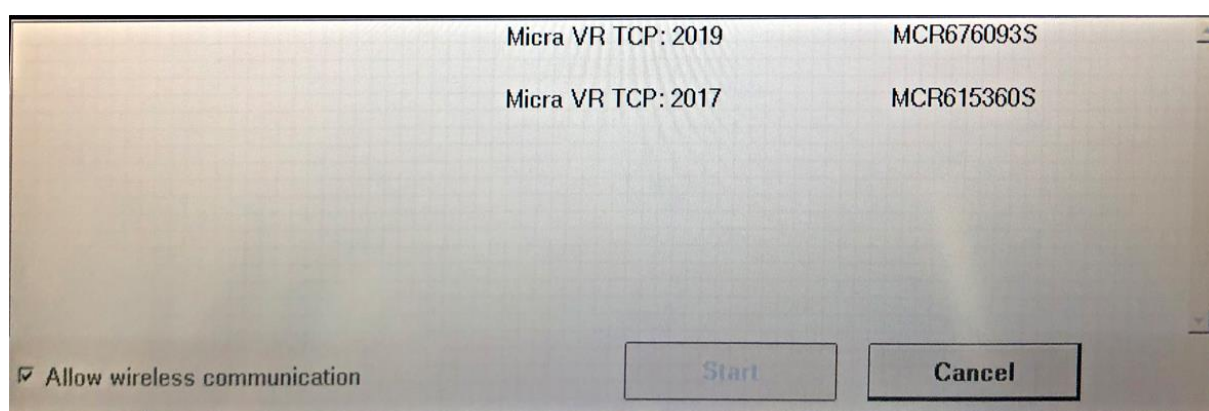


## Supplementary material

---

*Michalak M, Opolski G, Grabowski M. The second neighboring Micra transcatheter pacing system implantation due to early battery depletion. Kardiol Pol. 2020; 78: 480-481. doi:10.33963/KP.15289*

Please note that the journal is not responsible for the scientific accuracy or functionality of any supplementary material submitted by the authors. Any queries (except missing content) should be directed to the corresponding author of the article.



**Figure S1.** The view of the Medtronic's programmer screen. At interrogation two devices are visible and ready to connect.

**Video S1.** An attempt of Micra TPS extraction. The pacemaker is grabbed with a lasso tool and partially introduced to the loading system.