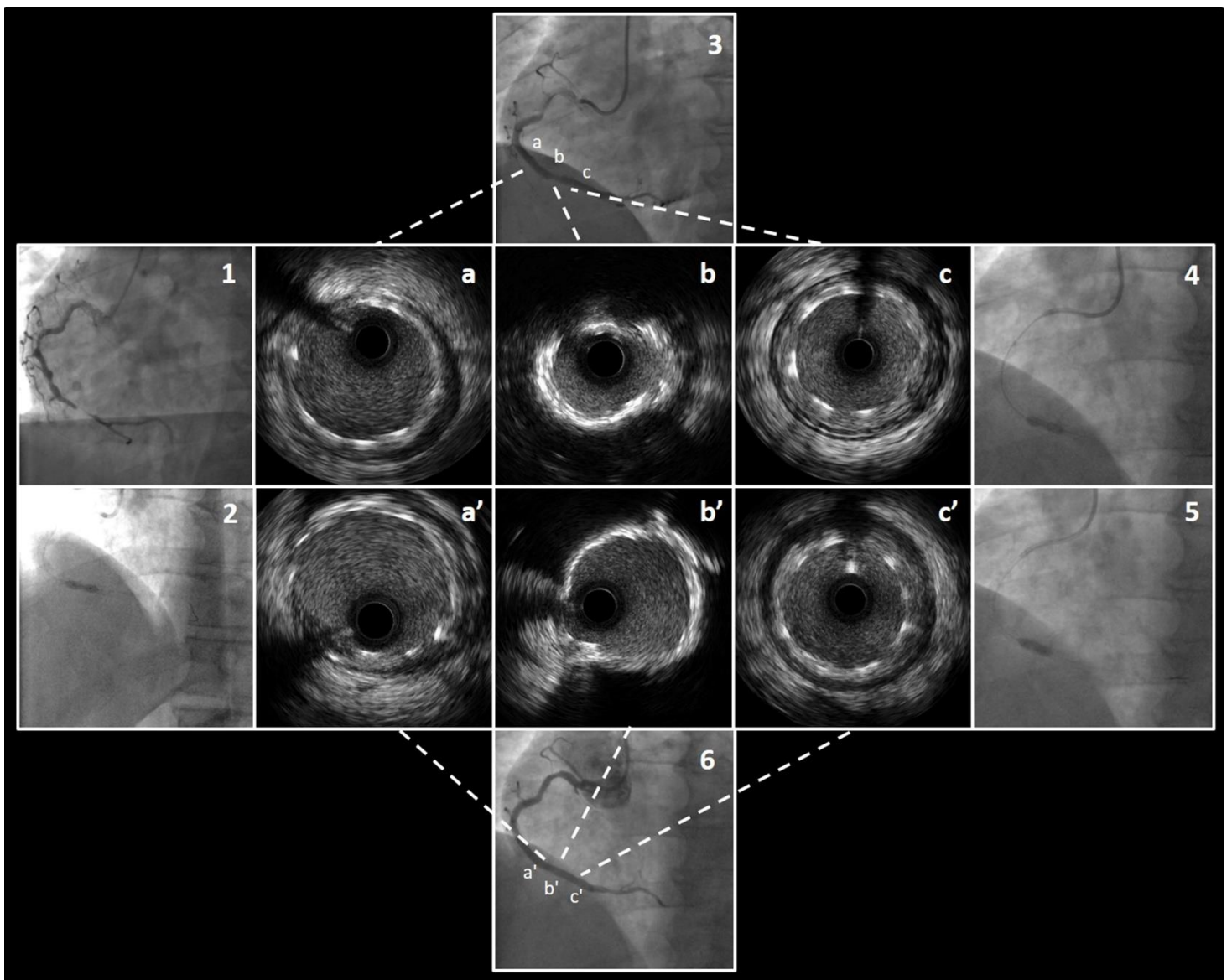


Supplementary material

Kassimis G, Didagelos M, Kouparanis A, Ziakas A. Intravascular ultrasound-guided coronary intravascular lithotripsy in the treatment of a severely under-expanded stent due to heavy underlying calcification. To re-stent or not? Kardiol Pol. 2020; 78: 346-347. doi:10.33963/KP.15173.

Please note that the journal is not responsible for the scientific accuracy or functionality of any supplementary material submitted by the authors. Any queries (except missing content) should be directed to the corresponding author of the article.



Supplementary Figure S1:

1. RCA angiogram during the inferior STEMI.
2. Dog-bone effect of the non-compliant balloon during post-dilatation after RCA stenting.
3. Residual in-stent stenosis of the RCA at the beginning of the second procedure.
4. In-stent S-IVL balloon during the second procedure.
5. In-stent post-dilatation after S-IVL with complete expansion of the non-compliant balloon.
6. Final result of the second procedure with no residual RCA in-stent stenosis. a, b, c: RCA IVUS pre S-IVL application. a: normal proximal stent struts, b: severe stent underexpansion with a 360° ring of calcium, c: normal distal stent struts. a', b', c': RCA IVUS post S-IVL application and non-compliant balloon dilatation. a': normal proximal stent struts, b': almost complete expansion of the underexpanded segment of the stent, c': normal distal stent struts.