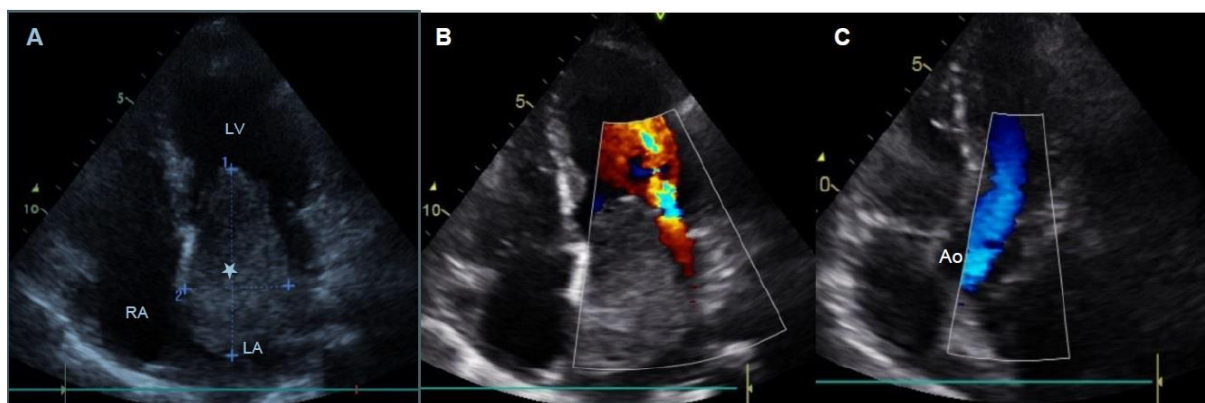


## Supplementary material

---

*Świerczewski M, Zieliński K, Kalińczuk Ł, et al. Value of 384-row detector computed tomography imaging of a giant left atrial myxoma coexisting with a prominent flap valve of the foramen ovale. Kardiol Pol. 2020; 78: 80-81. doi:10.33963/KP.15045*

Please note that the journal is not responsible for the scientific accuracy or functionality of any supplementary material submitted by the authors. Any queries (except missing content) should be directed to the corresponding author of the article.



**Figure S1.** Transthoracic echocardiography images showing (A) myxoma (star) originating from the left atrium (LA) and prolapsing into the left ventricle (LV). (B) Turbulent flow through the mitral valve during diastole. (C) Laminar flow through the aortic valve during systole. RA – right atrium, Ao - aorta