

Supplementary material

Łanocha M, Lesiak M. Complete healing of a bifurcation lesion treated with the implantation of 2 bioresorbable vascular scaffolds with the T and small protrusion technique. *Kardiol Pol.* 2019; 77: 488-489. doi:10.33963/KP.14803

Please note that the journal is not responsible for the scientific accuracy or functionality of any supplementary material submitted by the authors. Any queries (except missing content) should be directed to the corresponding author of the article.

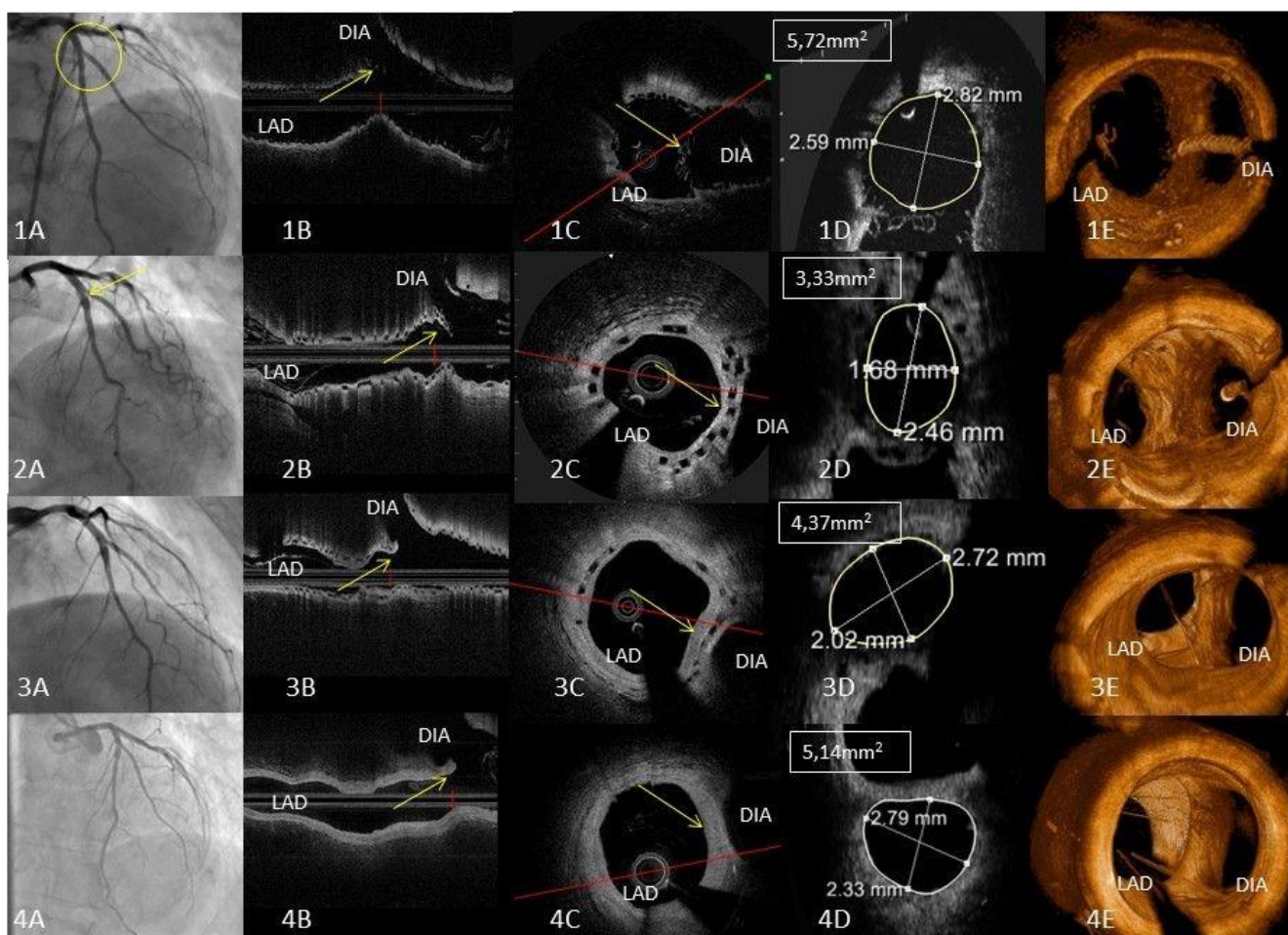


Figure S1A – S4A. Coronary angiograms after bifurcation stenting at baseline (1), at 18-Month, follow up (FU), with the yellow arrowhead showing the narrowing of side branch (SB) ostium (2), at 38-Month FU (3), at 54-Month FU (4).

Figure S1B – S4B. Optical frequency domain imaging (OFDI) longitudinal view, a run from the left anterior descending coronary artery (LAD), with the yellow arrowhead showing the neocarina formation at baseline (1), at 18-Month FU (2), at 38-Month FU (3), at 54-Month FU (4).

Figure S1C – S4C. OFDI selected cross-sections view showing with the yellow arrowhead the neocarina composition at baseline (1), at 18-Month FU (2), at 38-Month FU (3), at 54-Month FU (4).

Figure S1D – S4D. OFDI cross-sections view with the quantitative measurements of SB ostium area at baseline (1), at 18-Month FU (2), at 38-Month FU (3), at 54-Month FU (4). 1E – 4E. OFDI 3D view at the neocarina level at baseline (1), at 18-Month FU (2), at 38-Month FU (3), at 54-Month FU (4).