

Supplementary material

Buczyński M, Kuźma J, Kosiński P, et al. Perioperative echocardiography in a newborn with severe tricuspid dysplasia operated on with CorMatrix tube reconstruction. Pol Heart J. 2024.

Please note that the journal is not responsible for the scientific accuracy or functionality of any supplementary material submitted by the authors. Any queries (except missing content) should be directed to the corresponding author of the article.

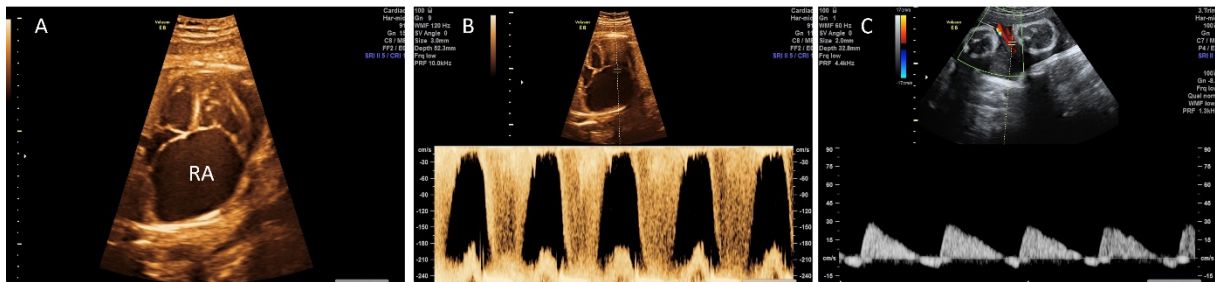


Figure S1. Prenatal ultrasound: cross section of fetal chest with severe tricuspid regurgitation, right atrium enlargement and abnormal umbilical artery flow. **A.** Prenatal ultrasound: cross section of fetal chest with 4-chamber view. Massively enlarged right atrium with transverse dimension of +13.8 Z-score. **B.** Continuous wave Doppler pressure gradient assessment through tricuspid regurgitation (>240cm/s). **C.** Prenatal ultrasound. Blood flow pattern in umbilical artery with reversed end-diastolic flow indicating fetal distress