

Supplementary material

Dziarmaga M, Puślecki M, Stefaniak S, et al. Right atrial mass of unclear origin in a patient with a ventriculoatrial shunt. Pol Heart J. 2024.

Please note that the journal is not responsible for the scientific accuracy or functionality of any supplementary material submitted by the authors. Any queries (except missing content) should be directed to the corresponding author of the article.

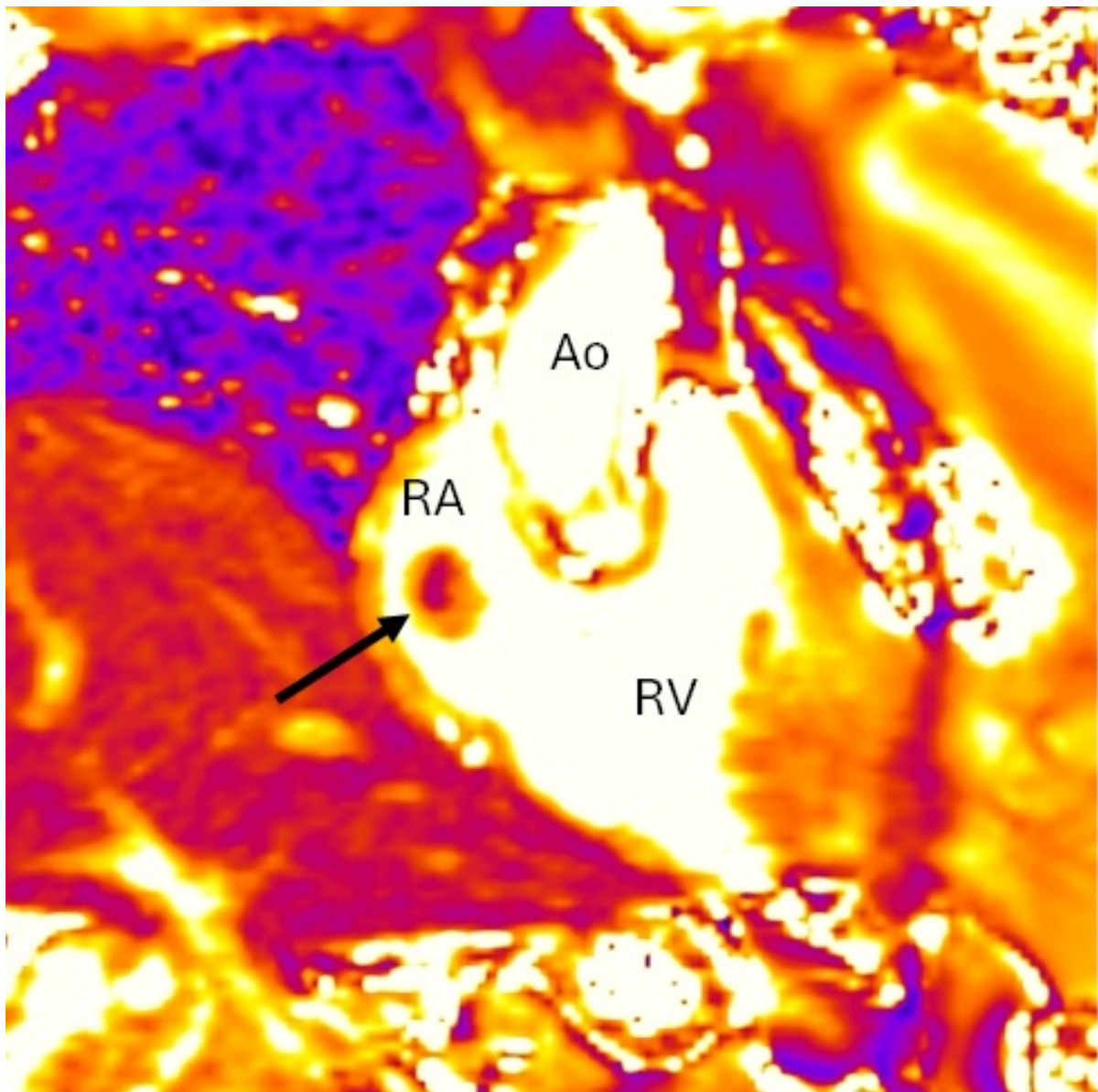


Figure S1. Thrombus in right atrium (arrow): low signal intensity mass in T2 mapping sequence in right ventricular inflow tract projection

Abbreviations: Ao, aorta; RA, right atrium; RV, right ventricle