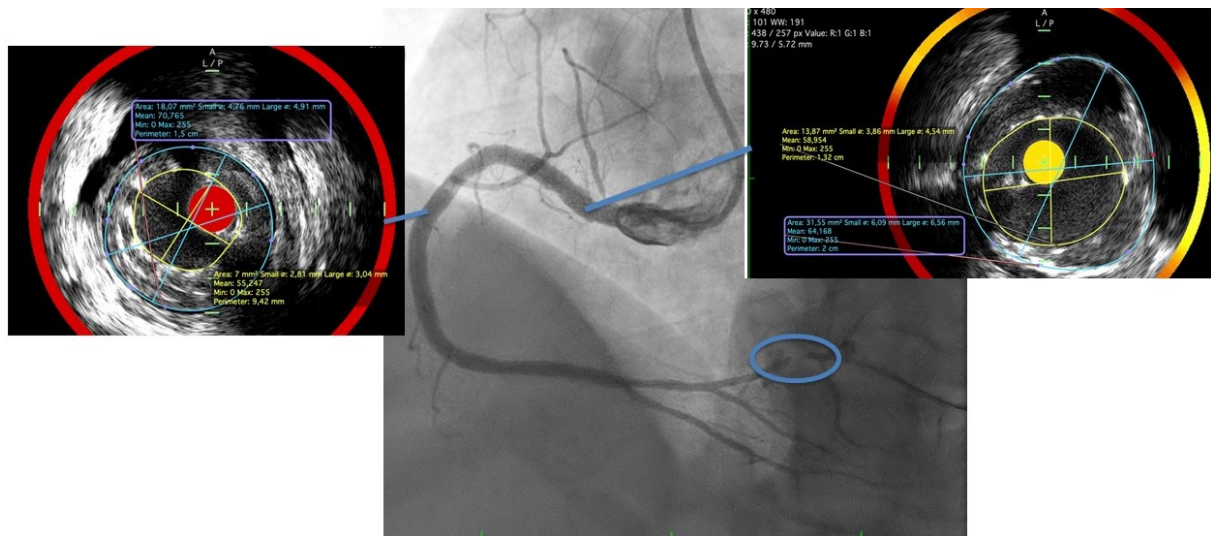


## Supplementary material

*Xenogiannis I, Pavlidis AN, Kaier TE, et al. Late stent dislodgement after aggressive post-dilatations: If you cannot retrieve it, deploy it!. Pol Heart J. 2024.*

Please note that the journal is not responsible for the scientific accuracy or functionality of any supplementary material submitted by the authors. Any queries (except missing content) should be directed to the corresponding author of the article.



**Figure S1.** Repeat angiography performed 5 months after successful right coronary artery (RCA) chronic total occlusion percutaneous coronary intervention showing an excellent result. Nevertheless, intravascular ultrasound (IVUS) revealed the presence of significant stent-vessel size mismatch and malapposition in the distal (vessel area: 18 mm<sup>2</sup> vs. stent area: 7 mm<sup>2</sup>) and proximal (vessel area: 32 mm<sup>2</sup> vs. stent area: 14 mm<sup>2</sup>) RCA. The blue circles in the IVUS capture outline vessel contour and the yellow circles outline stent contour. The blue circle in the coronary angiography capture shows a 90% lesion in the posterolateral branch