

Supplementary material

Afendoulis D, Moutafi M, Ampeliotis M, et al. Uncommon case of prosthetic valve endocarditis and evolution of paravalvular abscess. Pol Heart J. 2024.

Please note that the journal is not responsible for the scientific accuracy or functionality of any supplementary material submitted by the authors. Any queries (except missing content) should be directed to the corresponding author of the article.

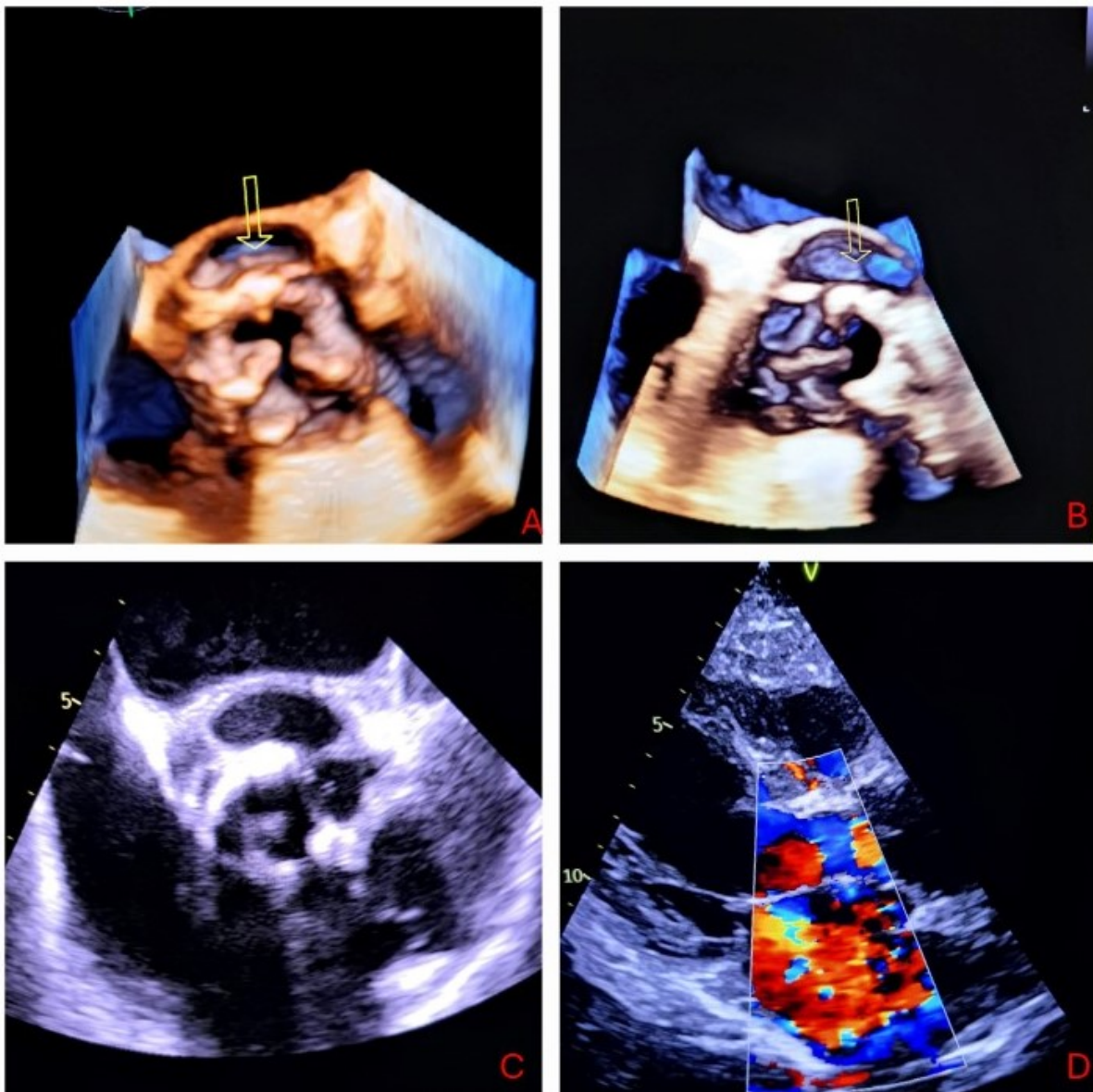


Figure S1. A–B. 3D Transesophageal heart echo depicting the enlargement of the paravalvular abscess-yellow arrow. C. Transesophageal heart echo short axis view depicting the enlargement of the paravalvular abscess. D. Transesophageal heart echo long axis view depicting normal function of aortic valve

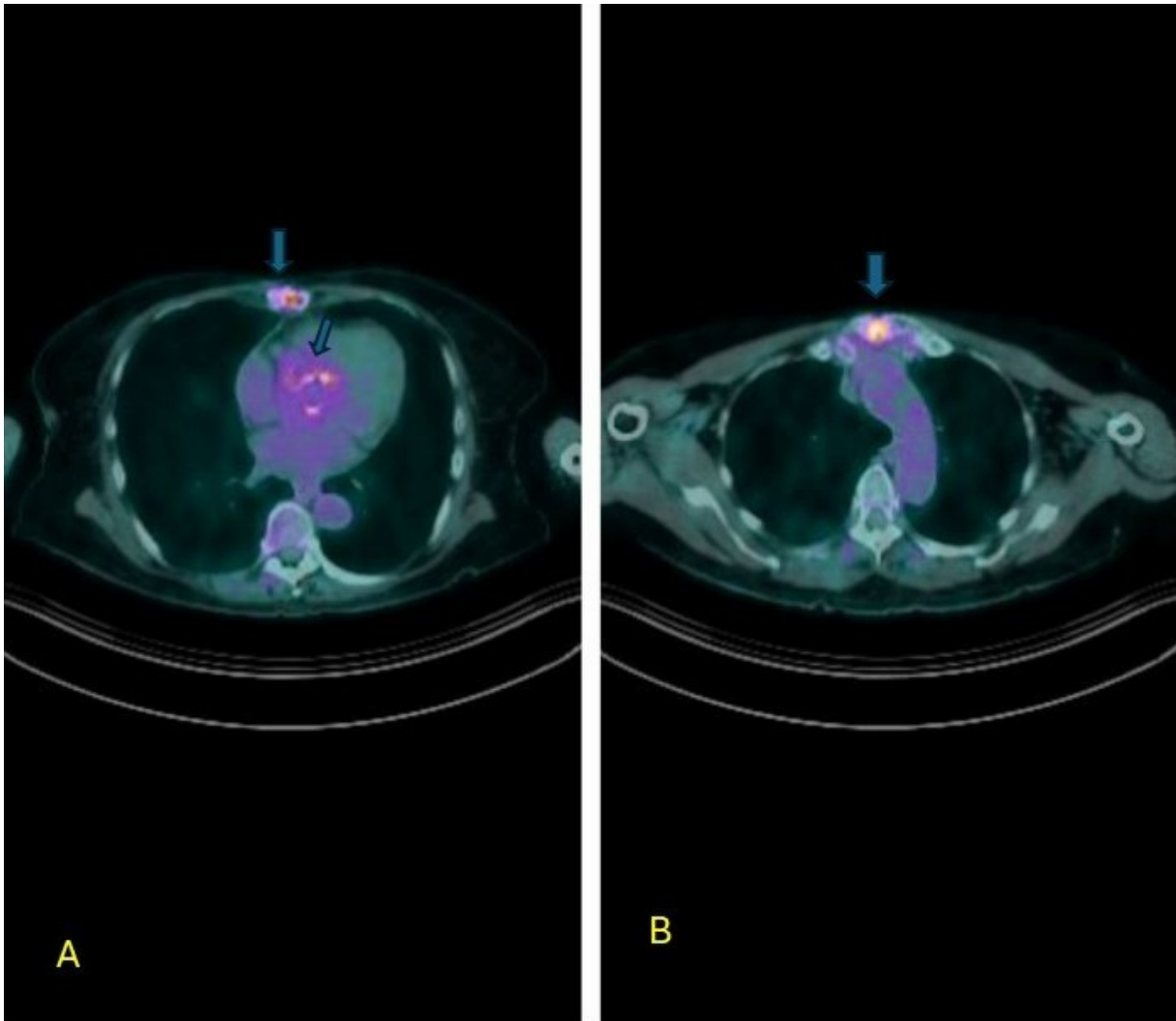


Figure S2. A–B. ^{18}F -FDG PET-CT oblique view depicting the glucose uptake of the prosthetic aortic valve/annulus and sternum with no aorta uptake (blue arrows)