

The influence of severe mitral regurgitation on major adverse cardiac and cerebrovascular events after myocardial infarction in 1-year follow-up: Data from the PL-ACS registry

Szymon Ładziński¹, Jacek Niedziela², Adam Witkowski³, Stanisław Bartus⁴, Maciej Lesiak⁵, Krzysztof Milewski⁶, Marek Gierlotka⁷, Przemysław Trzeciak², Mariusz Gąsior², Wojciech Wojakowski¹

¹Division of Cardiology and Structural Heart Diseases, Medical University of Silesia, Katowice, Poland

²3rd Department of Cardiology, Silesian Center for Heart Diseases, Medical University of Silesia, Katowice, Poland

³Department of Interventional Cardiology and Angiology, Institute of Cardiology, Warszawa, Poland

⁴2nd Department of Cardiology, Jagiellonian University Medical College, Kraków, Poland

⁵Department of Cardiology, Poznan University of Medical Sciences, Poznań, Poland

⁶Research and Development Center, American Heart of Poland, Warszawa, Poland

⁷Department of Cardiology, Faculty of Medicine, University of Opole, Opole, Poland

Editorial

by Kapadia et al.

Correspondence to:

Szymon Ładziński, MD,
Division of Cardiology and
Structural Heart Diseases,
Medical University of Silesia,
Ziolowa 45, 40–635 Katowice,
Poland,
phone: +48 322 523 930,
e-mail:
szymon.ladzinski@gmail.com

Copyright by the Author(s), 2023

DOI: 10.33963/KPa.2023.0064

Received:

November 9, 2022

Accepted:

February 28, 2023

Early publication date:

March 9, 2023

ABSTRACT

Background: Mitral regurgitation (MR) is frequently observed in patients with myocardial infarction (MI). However, the incidence of severe MR in the contemporary population is unknown.

Aims: The study evaluates the prevalence and prognostic impact of severe MR in the contemporary population of patients with ST-segment elevation myocardial infarction (STEMI) and non-ST-segment elevation myocardial infarction (NSTEMI).

Methods: The study group consisted of 8062 patients enrolled in the Polish Registry of Acute Coronary Syndromes (PL-ACS) in the years 2017–2019. Only the patients with full echocardiography performed during the index hospitalization were eligible. The primary composite outcome was 12-month major adverse cardiac and cerebrovascular events (MACCE) (death, non-fatal myocardial infarction, stroke, and heart failure [HF] hospitalization) compared between patients with and without severe MR.

Results: 5561 NSTEMI patients and 2501 STEMI patients were enrolled in the study. Severe MR occurred in 66 (1.19%) NSTEMI patients and 30 (1.19%) STEMI patients. Multivariable regression models demonstrated that severe MR is an independent risk factor for all-cause death in 12-month follow-up (odds ratio [OR], 1.839; 95% confidence interval [CI], 1.012–3.343; $P = 0.046$) in all MI patients. Patients with NSTEMI and severe MR had higher mortality (22.7% vs. 7.1%), HF rehospitalization rate (39.4% vs. 12.9%), and MACCE occurrence (54.5% vs. 29.3%). Severe MR was associated with higher mortality (20% vs. 6%) and higher HF rehospitalization rate (30% vs. 9.8%), stroke (10% vs. 0.8%), and MACCE rates (50% vs. 23.1%) in STEMI patients.

Conclusions: Severe MR is associated with higher mortality and MACCE occurrence in patients with MI in 12-month follow-up. Severe MR is an independent risk factor for all-cause death.

Key words: mitral regurgitation, mortality, myocardial infarction

WHAT'S NEW?

The present study showed that in patients with acute myocardial infarction (non-ST-segment elevation myocardial infarction and ST-segment elevation myocardial infarction) severe mitral regurgitation is strongly associated with increased mortality and occurrence of major adverse cardiac and cerebrovascular events in 12-month follow-up. Moreover, it is an independent risk factor for all-cause death. Taking into consideration these results, early echocardiographic assessment of mitral regurgitation becomes a crucial element in determining the prognosis of patients after myocardial infarction, which enables appropriate treatment implementation.

INTRODUCTION

Cardiovascular diseases, especially ischemic heart disease, remain among the most prevalent causes of mortality and morbidity responsible for 19%–20% of deaths in Europe [1]. Valvular heart disease (VHD) may complicate clinical course of acute coronary syndromes (ACS) [2, 3]. Mitral regurgitation (MR) of any severity is frequently observed in patients with acute myocardial infarction (MI) [3–23], affecting up to 50% of patients [13, 17]. In the era before widespread use of primary percutaneous coronary interventions (PCI) and longer delays from symptom onset to treatment, MR was reported as a poor prognostic factor [4–6, 8, 10–19], associated with an increase in mortality rates [4–6, 8, 12–19]. Most studies assessed this association in the mild and moderate stage of MR [4, 10, 12, 13, 16] in both the acute [11, 16] and chronic [4–6, 8, 10–17] phase after MI. It is less clear how severe MR affects the outcomes in the contemporary population of non-ST-segment elevation myocardial infarction (NSTEMI) and ST-segment elevation myocardial infarction (STEMI) patients treated invasively in the all-comer nationwide registry.

The present study aimed to evaluate specifically the prevalence and prognostic implication of severe MR in patients with acute MI in relation to in-hospital and 12-month outcomes. In this registry, we assessed both STEMI and NSTEMI patients. The study group included patients enrolled in the nationwide Polish Registry of Acute Coronary Syndromes (PL-ACS).

METHODS

Registry design

We used data from the PL-ACS registry database which has been an ongoing nationwide registry since 2003. It collects specific data on clinical characteristics, in-hospital management, and discharge treatment of all patients with ACS. The registry was established as a cooperative initiative of the Silesian Center for Heart Diseases in Zabrze and the Polish Ministry of Health. Design, methods, and logistic aspects of the PL-ACS were described previously [24, 25]. According to the protocol, all admitted patients with the initial diagnosis of ACS were evaluated for eligibility to enter the registry, and they were not enrolled until ACS had been confirmed. Patient data were gathered and analyzed by experienced physicians and entered directly in an appropriate web-based form.

Data collection and study group profile

Before the beginning of 2021, the PL-ACS included almost 783 000 patients. To obtain a 12-month follow-up, all patients discharged before the end of 2019 were considered. Then, the patients with the diagnosis of unstable angina were excluded. Since follow-up data were available only from the regional Silesian branch of the National Health Fund and only for the years 2017–2019, 466 642 patients were excluded. Twelve different hospitals from the Silesia region provided follow-up data. Only one additional patient was excluded due to the missing data in the ejection fraction (EF) measurements. The echocardiographic evaluation was performed during the index hospitalization. Only the patients with a detailed echocardiographic description of valvular disease were included. After that, the patients with severe aortic stenosis, severe aortic regurgitation, or severe mitral stenosis, and those who did not survive index hospitalization were excluded. After excluding patients in whom coronary angiography was not performed, the final study group consisted of 8062 individuals (Figure 1). Supplementary material, Figure S1, presents the study population flowchart.

Endpoints and definitions

The major adverse cardiac and cerebrovascular events (MACCE), assessed within the 12-month follow-up, were defined as all-cause death, non-fatal MI, stroke, and rehospitalization for heart failure (HF). Non-fatal MI was defined per the European Society of Cardiology (ESC) MI criteria [26]. Stroke was defined as an acute neurological deficit that lasted over 24 hours and was confirmed by a neurologist. The study involved only the patients with a confirmed diagnosis of STEMI or NSTEMI, meeting the ESC MI criteria [26]. The data collection period was from 2017 to 2019. The definition of severe MR during that time did not change despite the publication of new ESC guidelines for the management of valvular heart disease at the end of 2017 [27, 28]. The comorbidity definitions which changed during that time were updated due to the guidelines issued by European scientific societies.

Study hypothesis and objectives

In this study, it was hypothesized that the presence of severe MR significantly influences prognosis of MI patients. The study group was divided into two subgroups

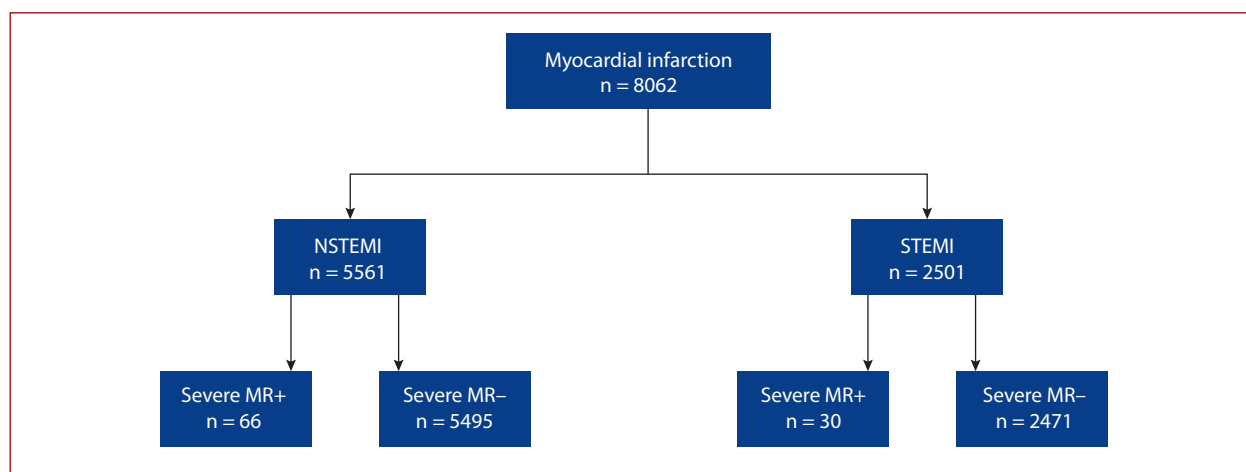


Figure 1. Study group division

Abbreviations: MR, mitral regurgitation; NSTEMI, non-ST-segment elevation myocardial infarction; STEMI, ST-segment elevation myocardial infarction

depending on whether patients were admitted with STEMI or NSTEMI. Each group was then further split into two subgroups: with or without severe MR (Figure 1). We compared the differences in terms of demographic data, clinical characteristics, treatment strategy, drugs prescribed on discharge, in-hospital and 12-month outcomes including the number of MACCEs.

Statistical analysis

Baseline demographic and clinical characteristics, angiographic findings, in-hospital adverse events, drugs on discharge, and events in the 12-month follow-up were compared depending on the diagnosis of severe MR and type of MI. Continuous variables were summarized using the arithmetic mean with standard deviation (SD) for normal distribution or median with interquartile range (IQR) for non-normal distribution. Normality of distribution was verified using the Shapiro-Wilk test. Continuous variables with normal distribution were compared using Student's t-test, whereas variables with skewed distribution were compared using the Mann-Whitney U test. Categorical variables were summarized using frequency tables. The χ^2 test with Yates's modification was used for the comparison of categorical data, if applicable. Long-term survival was compared using the log-rank test, and the Kaplan-Meier model was used to present cumulative survival probability. The multivariable analyses of factors affecting 12-month mortality and MACCE occurrence were performed. Forward stepwise logistic regression with cross-validation was used. The multivariable models for 12-month mortality and MACCE occurrence included over 20 variables. Statistical significance was defined as $P < 0.05$. All statistical analyses were performed using Statsoft Statistica software.

RESULTS

Population characteristics

As shown in Supplementary material, Figure S1, the final analysis included 8062 patients with known echocardiographic findings related to VHD. Figure 1 illustrates distribution of patients with MR depending on the diagnosis of STEMI (31%; $n = 2501$) or NSTEMI (69%; $n = 5561$). Those two subgroups were then further divided into severe MR+ and severe MR- subgroups.

In the NSTEMI subgroup, the patients with severe MR were more often previously diagnosed with coronary artery disease (CAD), HF, atrial fibrillation (AF), and chronic kidney disease, and had more often a history of coronary artery bypass graft (CABG) and pacemaker (PM) implantation. In the STEMI subgroup, the patients with severe MR were older and had a higher prevalence of AF. Table 1 shows the baseline demographic data.

Supplementary material, Table S1, presents clinical characteristics. Regardless of MI type, in the echocardiography examination, patients with severe MR had lower left ventricular ejection fraction (LVEF) and larger left ventricular (LV) systolic and diastolic diameters. The heart rate (HR) was also higher in the subgroups with severe MR in the STEMI and NSTEMI subgroups. In the NSTEMI subgroup, patients with severe MR also had lower systolic blood pressure (SBP). The Killip class on admission was statistically significantly higher in the severe MR+ subgroup in the NSTEMI subgroup. In patients with both MI types, a higher New York Heart Association (NYHA) class on discharge was typical of patients with severe MR.

With regard to concomitant VHD (Supplementary material, Table S2), moderate and severe tricuspid regurgitation (TR) was significantly more often identified in the severe

Table 1. Baseline patient characteristics

	NSTEMI (n = 5561)			STEMI (n = 2501)		
	Severe MR+ (n = 66)	Severe MR- (n = 5495)	P-value	Severe MR+ (n = 30)	Severe MR- (n = 2471)	P-value
Age, years, mean (SD)	70.2 (10.5)	68.6 (10.5)	0.22	73.0 (11.6)	64.9 (13.9)	<0.001
Female sex, n (%)	20 (30.3)	1927 (35.1)	0.51	18 (60.0)	813 (32.9)	0.01
Hypertension, n/n (%)	52/59 (88.1)	4190 (80.5)	0.53	18/26 (69.2)	1530 (66.8)	0.10
Hyperlipidemia, n/n (%)	33/58 (56.9)	2995 (61.5)	0.92	13/27 (48.1)	1118 (52.5)	0.98
Active smoker, n/n (%)	30/44 (68.2)	2809 (59.9)	0.74	14/21 (66.7)	1501 (68.8)	0.10
Diabetes, n/n (%)	24/59 (40.7)	1698 (33.1)	0.68	6/26 (23.1)	543 (23.8)	1.00
Obesity, n/n (%)	18/50 (36.0)	1110 (23.1)	0.20	3/20 (15.0)	461 (21.2)	0.93
CAD, n/n (%)	30/64 (46.9)	1323 (26.1)	0.003	3/28 (10.7)	300 (13.0)	0.99
MI, n/n (%)	28/64 (43.8)	1609 (31.2)	0.20	2/29 (6.9)	344 (14.8)	0.70
PCI, n/n (%)	29/64 (45.3)	1638 (31.8)	0.15	3/30 (10.0)	342 (14.7)	0.92
CABG, n/n (%)	15/62 (24.2)	514 (10.1)	0.004	0/30 (0)	57 (2.5)	0.86
HF, n/n (%)	23/61 (37.7)	610 (12.0)	<0.001	1/30 (3.3)	119 (5.1)	0.98
AF, n/n (%)	24/63 (38.1)	796 (15.6)	<0.001	10/29 (34.5)	168 (7.2)	<0.001
Stroke, n/n (%)	3/61 (4.9)	327 (6.5)	0.97	0 (0)	82 (3.5)	0.78
CKD, n/n (%)	17/62 (27.4)	608 (12.0)	0.003	3/30 (10.0)	128 (5.5)	0.77
PAD, n/n (%)	10/60 (16.7)	561 (11.2)	0.62	0 (0)	127 (5.5)	0.64
COPD/asthma, n/n (%)	2/61 (3.3)	346 (6.9)	0.74	2/29 (6.9)	121 (5.3)	0.99
History of malignancy, n/n (%)	3/61 (4.9)	182 (3.7)	0.97	1/29 (3.4)	83 (3.6)	1.00
PM, n/n (%)	6/63 (9.5)	153 (3.0)	0.03	1/30 (3.3)	10 (0.4)	0.14
ICD, n/n (%)	3/63 (4.8)	77 (1.5)	0.22	0 (0)	11 (0.5)	0.99
CRT-D, n/n (%)	1/63 (1.6)	42 (0.8)	0.93	0 (0)	5 (0.2)	0.10

Obesity defined as BMI (body mass index) >30 kg/m²

Abbreviations: AF, atrial fibrillation; CABG, coronary artery bypass graft; CAD, coronary artery disease; CKD, chronic kidney disease; COPD, chronic obstructive pulmonary disease; CRT-D, cardiac resynchronization therapy defibrillator; HF, heart failure; ICD, implantable cardioverter-defibrillator; MI, myocardial infarction; MR, mitral regurgitation; NSTEMI, non-ST-segment elevation myocardial infarction; PAD, peripheral artery disease; PCI, percutaneous coronary intervention; PM, pacemaker; STEMI, ST-segment elevation myocardial infarction

MR subgroups, regardless of MI type. Moderate aortic regurgitation (AR) was more frequent in patients with severe MR in the NSTEMI subgroup.

In-hospital management

As shown in Supplementary material, *Table S3*, in the NSTEMI subgroup, use of radial access was significantly lower in severe MR+ vs. severe MR- patients. Severe MR was associated with a higher number of stenoses in coronary arteries in both the STEMI and NSTEMI subgroups. There was also a significant difference in terms of distribution of coronary lesions between severe MR+ and severe MR- patients with NSTEMI. In the subgroup with NSTEMI, PCI was performed more often in the severe MR- subgroup.

During index hospitalization (*Table 2*), both in the STEMI and NSTEMI subgroups, patients with severe MR had pulmonary edema more often. A tendency for more frequent shock diagnosis could be seen in the severe MR+ subgroup in the NSTEMI subgroup.

Supplementary material, *Table S4*, presents drugs prescribed on discharge. Diuretics and aldosterone receptor antagonists (MRA) were given more frequently to patients with severe MR, in both MI-type subgroups. Furthermore, in the NSTEMI subgroup, anticoagulants were prescribed more frequently in the severe MR subgroup. At the same time, acetylsalicylic acid (ASA) was given less often in the same subgroup.

Follow-up

Twelve-month follow-up is presented in *Table 2*. The median follow-up was 19.5 (12.9–27.1) months. In the subgroup of patients with NSTEMI, individuals with severe MR had higher mortality, were more often rehospitalized for HF, and had higher MACCE occurrence. Furthermore, they had more often implantable cardioverter defibrillators (ICDs) and cardiac resynchronisation therapy (CRT) implantation. Similarly in the STEMI subgroup, patients with severe MR had a higher mortality rate, were more often rehospitalized for HF, and had more frequently CRT implanted. Additionally, in this subgroup, stroke occurred significantly more often. The rate of composite MACCE was also significantly higher. The Kaplan-Meier estimators (*Figures 2–5*, Supplementary material, *Figures S2–S4*) present the distribution of events over time during the follow-up period.

Analysis of multivariable models for 12-month mortality (*Table 3*) and MACCE (Supplementary material, *Table S5*) occurrence showed that in the population after MI, severe MR is an independent risk factor for all-cause death in 12-month follow-up. At the same time, severe MR is not an independent risk factor for MACCE occurrence during 12-month follow-up.

DISCUSSION

The present study shows that severe MR is infrequent in the contemporary population of patients with acute MI

Table 2. Events during hospitalization and 12-month follow-up

	NSTEMI (n = 5561)			STEMI (n = 2501)		
	Severe MR+ (n = 66)	Severe MR- (n = 5495)	P-value	Severe MR+ (n = 30)	Severe MR- (n = 2471)	P-value
Events during hospitalization						
Shock, n (%)	2 (3.0)	31 (0.6)	0.08	2 (6.7)	49 (2.0)	0.35
Pulmonary edema, n (%)	3 (4.6)	45 (0.8)	0.009	2 (6.7)	21 (0.8)	0.02
MI, n (%)	1 (1.5)	22 (0.4)	0.57	0 (0)	9 (0.4)	0.99
Stroke/TIA, n (%)	1 (1.5)	11 (0.2)	0.16	0 (0)	6 (0.2)	0.10
Major bleeding, n (%)	2 (3.0)	78 (1.4)	0.74	0 (0)	44 (1.8)	0.91
SCA in hospital, n (%)	1 (1.5)	30 (0.5)	0.77	1 (3.3)	39 (1.6)	0.90
12-months follow-up events						
Death, n (%)	15 (22.7)	388 (7.1)	<0.001	6 (20.0)	148 (6.0)	0.02
MI, n (%)	9 (13.6)	819 (14.9)	0.99	3 (10.0)	273 (11.0)	0.10
Hospitalization for HF, n (%)	26 (39.4)	709 (12.9)	<0.001	9 (30.0)	242 (9.8)	0.004
Stroke, n (%)	1 (1.5)	98 (1.8)	0.10	3 (10.0)	19 (0.8)	<0.001
MACCE, n (%)	36 (54.5)	1612 (29.3)	<0.001	15 (50.0)	570 (23.1)	0.007
PM implantation, n (%)	1 (1.5)	84 (1.5)	1.00	0 (0)	13 (0.5)	0.98
ICD implantation, n (%)	6 (9.1)	124 (2.3)	0.004	1 (3.3)	74 (3.0)	1.00
CRT implantation, n (%)	6 (9.1)	60 (1.1)	<0.001	1 (3.3)	7 (0.3)	0.03

Major bleeding was defined as bleeding (1) associated with a >5 g/dl (0.5 g/l) decrease in the hemoglobin level or a >15% (absolute) decrease in the hematocrit level; (2) an event that caused hemodynamic compromise; or (3) requirement for blood transfusion

Abbreviations: CRT, cardiac resynchronization therapy; MACCE, major adverse cardiac and cerebrovascular events; SCA, sudden cardiac arrest; TIA, transient ischemic attack; other — see Table 1

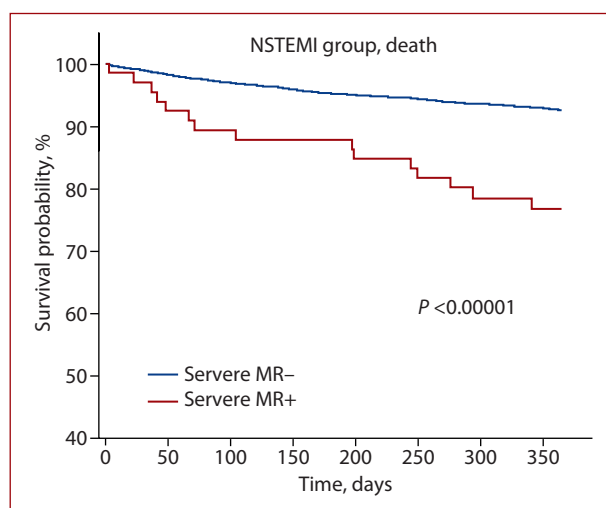


Figure 2. Kaplan-Meier curves — the NSTEMI group, mortality
Abbreviations: see Figure 1

treated invasively. It is associated with a statistically significant increase in the mortality rate and composite MACCE occurrence in patients diagnosed with STEMI and NSTEMI, during 12-month follow-up. It also proves that severe MR is an independent risk factor for all-cause death.

When considering the impact of MR on patients with MI, several factors can have a significant influence on obtained results. Therefore, they have to be taken into consideration when analyzing each study concerning the subject matter. Despite the importance of the problem, the number of reliable studies analyzing this matter is limited. It is also worth mentioning that in a few studies [10, 14, 17], analyzed groups did not exceed 350 patients. Consequently, the absolute number of patients with MR is relatively low.

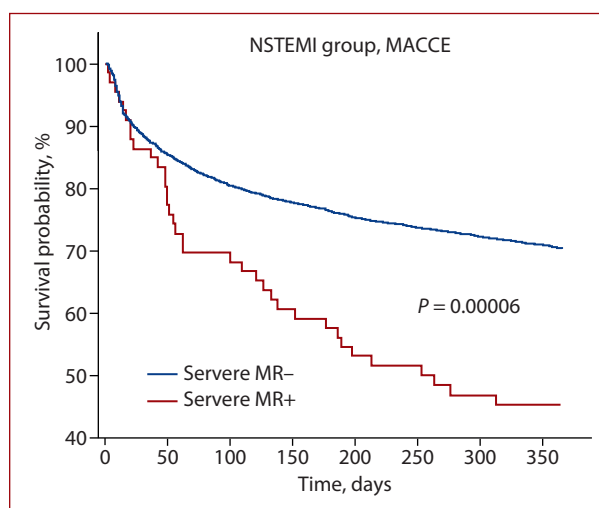


Figure 3. Kaplan-Meier curves — the NSTEMI group, MACCE occurrence

Abbreviations: see Figure 1 and Table 1

Nevertheless, one general conclusion is common in almost all of them [4–6, 8, 12–18] — MR has a significant influence on mortality in the group of patients after MI.

The worse prognosis for patients with MR may come from worse in-hospital characteristics, which appears to be typical of all analyzed studies [10, 12–17], including the present study. Among others, factors listed most often are advanced age [10, 12–16], CAD diagnosed in history [10, 12, 14], and diabetes mellitus [10, 14].

Even though etiology and mechanisms in which MR evolves may play an important role in analyzing the current population properly, it is hard to distinguish ischemic

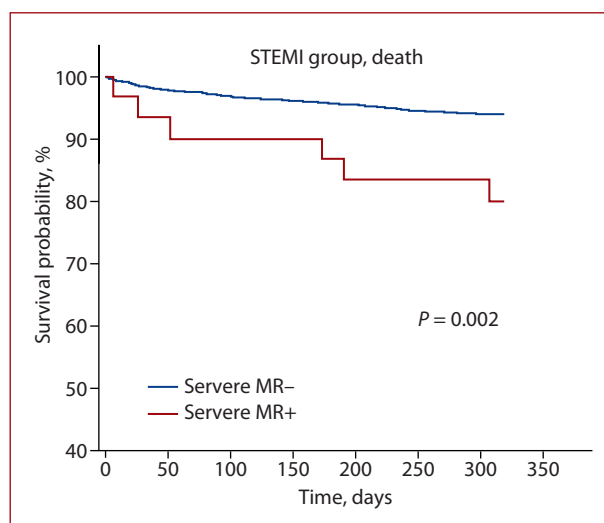


Figure 4. Kaplan-Meier curves — the STEMI group, mortality
Abbreviations: see Figure 1

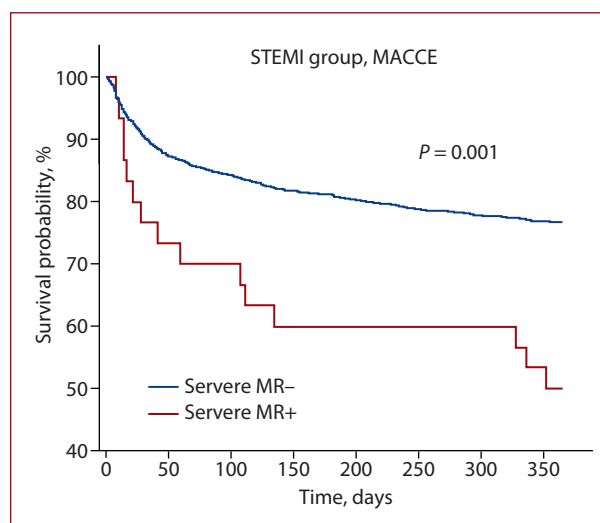


Figure 5. Kaplan-Meier curves — the STEMI group, MACCE occurrence
Abbreviations: see Figures 1 and Table 1

Table 3. Multivariate analysis for death during 12-month follow-up

	OR	95% CI	P-value
EF, per 1% increase	0.968	0.958–0.978	<0.001
Age, per 1 year increase	1.055	1.043–1.068	<0.001
Diuretics on discharge vs. no diuretics on discharge	1.761	1.361–2.278	<0.001
Killip class 2 on admission vs. Killip class 1 on admission	1.545	1.159–2.059	0.003
Killip class 3 on admission vs. Killip class 1 on admission	1.541	0.937–2.535	0.09
Killip class 4 on admission vs. Killip class 1 on admission	1.185	0.545–2.578	0.67
CKD, vs. no CKD	1.438	1.086–1.904	0.01
COPD/asthma, vs. no COPD/asthma	1.684	1.184–2.395	0.004
NYHA II on discharge vs. NYHA I on discharge	1.457	1.141–1.860	0.003
NYHA III on discharge vs. NYHA I on discharge	1.729	1.189–2.515	0.004
NYHA IV on discharge vs. NYHA I on discharge	1.317	0.395–4.387	0.65
ACEI/ARB/ARNI on discharge vs. no ACEI/ARB/ARNI on discharge	0.661	0.508–0.860	0.002
PAD vs. no PAD	1.584	1.169–2.147	0.003
HR, per 1 bpm increase	1.008	1.002–1.013	0.005
IABP, vs. no IABP	3.274	1.169–9.170	0.02
LVEDD, per 1 mm increase	0.990	0.982–0.999	0.03
Severe MR, vs. no severe MR	1.839	1.012–3.343	0.046

Abbreviations: ACEI, angiotensin-converting enzyme inhibitors; ARB, angiotensin receptor blocker; ARNI, angiotensin receptor-neprilysin inhibitor; CI, confidence interval; CKD, chronic kidney disease; COPD, chronic obstructive pulmonary disease; EF, ejection fraction; IABP, intra-aortic balloon pump; LVEDD, left ventricular end-diastolic diameter; NYHA, New York Heart Association functional classification; OR, odds ratio; PAD, peripheral artery disease; other — see Table 1

mitral regurgitation (IMR) from MR caused by factors other than MI. IMR is defined as MR directly associated with CAD. IMR occurs due to ischemic myocardial changes despite unaltered mitral leaflets and chordae. LV remodeling and papillary muscle displacement are usually listed as factors playing an important role in its development [18, 29– 32].

In this study, worse echocardiography results regarding LV systolic and diastolic diameters, as well as LVEF could be seen in the subgroup with severe MR, in both STEMI and NSTEMI subgroups. In connection with this, it is highly possible that most patients with severe MR from our study could be diagnosed with IMR, however, it is not possible to unequivocally confirm that assumption.

There are some differences between the present study and other available research concerning the subject mat-

ter. Most studies include in their analysis both MI types in one group [12, 15, 16], some including also unstable angina (UA) [13, 14]. Due to relevant differences in clinical course between STEMI and NSTEMI, in the present study, those two subgroups were analyzed separately. In most studies concerning this subject matter, the group diagnosed with MR is not divided according to MR severity [10], or subgroups include both moderate and severe MR [12, 13, 15, 16]. In several studies demarking a subgroup with severe MR only would probably entail creating a group composed of just a few patients, not big enough to obtain reliable results. In this study, in order to obtain unambiguous results only the patients with severe MR were taken into consideration. MI treatment methods are another factor that differentiates the compared studies.

Several of them [4, 6–9, 12] include thrombolysis, whereas, in the present study, coronary angioplasty and CABG were the only methods considered.

Study limitations

Several potential limitations should be borne in mind when interpreting the presented data. First, despite its high probability, we cannot confirm without fail that the index MI was the factor inducing MR. This is the limitation common to almost all studies concerning the subject matter [10–13, 15, 16]. Second, data used in this study were gathered retrospectively. Because different physicians did echocardiography examinations and MR was operator-assessed, that may lead to interpretation bias. Third, echocardiography was performed only once during the index hospitalization. Because MR grade may change in time, an echocardiography assessment during follow-up would have provided important data. Fourth, because it was not possible to obtain follow-up data from all National Health Fund departments, all analyzed follow-up data come from the regional Silesian branch of the National Health Fund.

Clinical implications

The present study confirms the importance of echocardiography assessment of MR in patients after MI. Taking into consideration the statistically significant findings regarding mortality in this population, special emphasis should be placed on early clinical and echocardiographic control and appropriate treatment implementation.

CONCLUSIONS

Mitral regurgitation is a frequent comorbid condition in patients after MI, both STEMI and NSTEMI. It is strongly associated with more frequent HF diagnosis, higher mortality, and MACCE occurrence in a 12-month follow-up. In the population of patients after MI, severe MR is an independent risk factor for all-cause death in 12-month observation. Thus, MR assessment becomes a crucial element in determining the prognosis of MI patients.

Supplementary material

Supplementary material is available at https://journals.viamedica.pl/kardiologia_polska.

Article information

Acknowledgments: The authors thank all the physicians and nurses who participated in the PL-ACS registry, regional coordinators, and employees of the National Health Fund of Poland for their logistic support.

Conflict of interest: None declared.

Funding: This work was supported by the Ministry of Health which finances the PL-ACS registry.

Open access: This article is available in open access under Creative Commons Attribution-Non-Commercial-No Derivatives 4.0 International (CC BY-NC-ND 4.0) license, which allows downloading and sharing articles with others as long as they credit the authors and the publisher, but without permission to change them in any way or use them commercially. For commercial use, please contact the journal office at kardiologiapolska@ptkardio.pl.

REFERENCES

1. Timmis A, Townsend N, Gale C, et al. European Society of Cardiology: Cardiovascular Disease Statistics 2017. *Eur Heart J.* 2018; 39(7): 508–579, doi: [10.1093/eurheartj/ehx628](https://doi.org/10.1093/eurheartj/ehx628), indexed in Pubmed: [29190377](https://pubmed.ncbi.nlm.nih.gov/29190377/).
2. Hasdai D, Topol EJ, Califf RM, et al. Platelet glycoprotein IIb/IIIa blockade and outcome of cardiogenic shock complicating acute coronary syndromes without persistent ST-segment elevation. *J Am Coll Cardiol.* 2000; 36(3): 685–692, doi: [10.1016/s0735-1097\(00\)00814-7](https://doi.org/10.1016/s0735-1097(00)00814-7), indexed in Pubmed: [10987585](https://pubmed.ncbi.nlm.nih.gov/10987585/).
3. Hasdai D, Lev El, Behar S, et al. Acute coronary syndromes in patients with pre-existing moderate to severe valvular disease of the heart: lessons from the Euro-Heart Survey of acute coronary syndromes. *Eur Heart J.* 2003; 24(7): 623–629, doi: [10.1016/s0195-668x\(02\)00742-x](https://doi.org/10.1016/s0195-668x(02)00742-x), indexed in Pubmed: [12657220](https://pubmed.ncbi.nlm.nih.gov/12657220/).
4. Lamas G, Mitchell G, Flaker G, et al. Clinical Significance of Mitral Regurgitation After Acute Myocardial Infarction. *Circulation.* 1997; 96(3): 827–833, doi: [10.1161/01.cir.96.3.827](https://doi.org/10.1161/01.cir.96.3.827).
5. Barzilai B, Gessler C, Pérez J, et al. Significance of Doppler-detected mitral regurgitation in acute myocardial infarction. *Am J Cardiol.* 1988; 61(4): 220–223, doi: [10.1016/0002-9149\(88\)90919-8](https://doi.org/10.1016/0002-9149(88)90919-8).
6. Tchong J. Outcome of Patients Sustaining Acute Ischemic Mitral Regurgitation during Myocardial Infarction. *Ann Intern Med.* 1992; 117(1): 18, doi: [10.7326/0003-4819-117-1-18](https://doi.org/10.7326/0003-4819-117-1-18), indexed in Pubmed: [1596043](https://pubmed.ncbi.nlm.nih.gov/1596043/).
7. Nesković AN, Marinković J, Bojić M, et al. Early predictors of mitral regurgitation after acute myocardial infarction. *Am J Cardiol.* 1999; 84(3): 329–32, A8, doi: [10.1016/s0002-9149\(99\)00287-8](https://doi.org/10.1016/s0002-9149(99)00287-8), indexed in Pubmed: [10496446](https://pubmed.ncbi.nlm.nih.gov/10496446/).
8. Lehmann KG, Francis CK, Dodge HT. Mitral regurgitation in early myocardial infarction. Incidence, clinical detection, and prognostic implications. TIMI Study Group. *Ann Intern Med.* 1992; 117(1): 10–17, doi: [10.7326/0003-4819-117-1-10](https://doi.org/10.7326/0003-4819-117-1-10), indexed in Pubmed: [1596042](https://pubmed.ncbi.nlm.nih.gov/1596042/).
9. Nanjappa V, Aniyathodiyil G, Keshava R. Clinical profile and 30-day outcome of women with acute coronary syndrome as a first manifestation of ischemic heart disease: A single-center observational study. *Indian Heart J.* 2016; 68(2): 164–168, doi: [10.1016/j.ihj.2015.08.006](https://doi.org/10.1016/j.ihj.2015.08.006), indexed in Pubmed: [27133325](https://pubmed.ncbi.nlm.nih.gov/27133325/).
10. Núñez Gil JJ, Pérez de Isla L, García-Rubira JC, et al. Ischemic mitral regurgitation and non-ST-segment elevation acute myocardial infarction: long-term prognosis. *Rev Esp Cardiol.* 2009; 62(11): 1267–1275, doi: [10.1016/s1885-5857\(09\)73354-7](https://doi.org/10.1016/s1885-5857(09)73354-7), indexed in Pubmed: [19889338](https://pubmed.ncbi.nlm.nih.gov/19889338/).
11. Nishino S, Watanabe N, Kimura T, et al. The Course of Ischemic Mitral Regurgitation in Acute Myocardial Infarction After Primary Percutaneous Coronary Intervention: From Emergency Room to Long-Term Follow-Up. *Circ Cardiovasc Imaging.* 2016; 9(8): e004841, doi: [10.1161/CIRCIMAGING.116.004841](https://doi.org/10.1161/CIRCIMAGING.116.004841), indexed in Pubmed: [27516478](https://pubmed.ncbi.nlm.nih.gov/27516478/).
12. Feinberg MS, Schwammenthal E, Shlizerman L, et al. Prognostic significance of mild mitral regurgitation by color Doppler echocardiography in acute myocardial infarction. *Am J Cardiol.* 2000; 86(9): 903–907, doi: [10.1016/s0002-9149\(00\)01119-x](https://doi.org/10.1016/s0002-9149(00)01119-x), indexed in Pubmed: [11053696](https://pubmed.ncbi.nlm.nih.gov/11053696/).
13. Bursi F, Enriquez-Sarano M, Nkomo VT, et al. Heart failure and death after myocardial infarction in the community: the emerging role of mitral regurgitation. *Circulation.* 2005; 111(3): 295–301, doi: [10.1161/01.CIR.0000151097.30779.04](https://doi.org/10.1161/01.CIR.0000151097.30779.04), indexed in Pubmed: [15655133](https://pubmed.ncbi.nlm.nih.gov/15655133/).
14. Perez de Isla L, Zamorano J, Quezada M, et al. Prognostic significance of functional mitral regurgitation after a first non-ST-segment elevation acute coronary syndrome. *Eur Heart J.* 2006; 27(22): 2655–2660, doi: [10.1093/eurheartj/ehl287](https://doi.org/10.1093/eurheartj/ehl287), indexed in Pubmed: [17015403](https://pubmed.ncbi.nlm.nih.gov/17015403/).
15. Chung SY, Lin FC, Chua S, et al. Clinical profile and outcome of first acute myocardial infarction with ischemic mitral regurgitation. *Chang Gung Med J.* 2008; 31(3): 268–275, indexed in Pubmed: [18782949](https://pubmed.ncbi.nlm.nih.gov/18782949/).
16. Pellizzon G, Grines C, Cox D, et al. Importance of mitral regurgitation in patients undergoing percutaneous coronary intervention for acute myocardial infarction. *J Am Coll Cardiol.* 2004; 43(8): 1368–1374, doi: [10.1016/j.jacc.2003.11.046](https://doi.org/10.1016/j.jacc.2003.11.046), indexed in Pubmed: [15093869](https://pubmed.ncbi.nlm.nih.gov/15093869/).
17. Grigioni F, Enriquez-Sarano M, Zehr KJ, et al. Ischemic mitral regurgitation: long-term outcome and prognostic implications with quantitative Doppler assessment. *Circulation.* 2001; 103(13): 1759–1764, doi: [10.1161/01.cir.103.13.1759](https://doi.org/10.1161/01.cir.103.13.1759), indexed in Pubmed: [11282907](https://pubmed.ncbi.nlm.nih.gov/11282907/).
18. Kambara H, Nakagawa M, Kinoshita M, et al. Long-term prognosis after myocardial infarction: univariate and multivariate analysis of clinical characteristics in 1,000 patients. *Kyoto and Shiga Myocardial*

- Infarction (KYSMI) Study Group. *Clin Cardiol.* 1993; 16(12): 872–878, doi: [10.1002/clc.4960161207](https://doi.org/10.1002/clc.4960161207), indexed in Pubmed: [8168271](https://pubmed.ncbi.nlm.nih.gov/8168271/).
19. Gomez-Polo JC, Buzzatti N, Denti P, et al. Post-infarct mitral insufficiency: when to resort to reparative surgery, when to the mitral clip. *Eur Heart J Suppl.* 2022; 24(Suppl I):1104–1110, doi: [10.1093/eurheartjsup/suac082](https://doi.org/10.1093/eurheartjsup/suac082), indexed in Pubmed: [36380806](https://pubmed.ncbi.nlm.nih.gov/36380806/).
 20. Hennessey B, Sabatovicz N, Del Trigo M. Acute ischaemic mitral valve regurgitation. *J Clin Med.* 2022; 11(19), doi: [10.3390/jcm11195526](https://doi.org/10.3390/jcm11195526), indexed in Pubmed: [36233410](https://pubmed.ncbi.nlm.nih.gov/36233410/).
 21. Arias FGR, Alonso-Fernandez-Gatta M, Dominguez MP, et al. Predictive model and risk score for in-hospital mortality in patients with all-cause cardiogenic shock. *Int Heart J.* 2022; 63(6): 1034–1040, doi: [10.1536/ihj.22-303](https://doi.org/10.1536/ihj.22-303), indexed in Pubmed: [36372409](https://pubmed.ncbi.nlm.nih.gov/36372409/).
 22. Shetty MK, Kunal S, Girish MP, et al. Machine learning based model for risk prediction after ST-Elevation myocardial infarction: Insights from the North India ST elevation myocardial infarction (NORIN-STEMI) registry. *Int J Cardiol.* 2022; 362: 6–13, doi: [10.1016/j.ijcard.2022.05.023](https://doi.org/10.1016/j.ijcard.2022.05.023), indexed in Pubmed: [35577162](https://pubmed.ncbi.nlm.nih.gov/35577162/).
 23. Kozłowska B, Leszek P, Niedziela J, et al. Clinical characteristics and treatment profiles of patients after acute myocardial infarction with left ventricular ejection fraction below 40%: a short 2018–2019 report on the PL-ACS registry. *Kardiol Pol.* 2020; 78(7-8): 766–769, doi: [10.33963/KP.15377](https://doi.org/10.33963/KP.15377), indexed in Pubmed: [32432442](https://pubmed.ncbi.nlm.nih.gov/32432442/).
 24. Zandecki L, Janion M, Sadowski M, et al. Polish Registry of Acute Coronary Syndromes (PL-ACS). Characteristics, treatments and outcomes of patients with acute coronary syndromes in Poland. *Kardiol Pol.* 2007; 65(8): 861–72; discussion 873, indexed in Pubmed: [17853315](https://pubmed.ncbi.nlm.nih.gov/17853315/).
 25. Poloński L, Gąsior M, Gierlotka M, et al. What has changed in the treatment of ST-segment elevation myocardial infarction in Poland in 2003–2009? Data from the Polish Registry of Acute Coronary Syndromes (PL-ACS). *Kardiol Pol.* 2011; 69(11): 1109–1118, indexed in Pubmed: [22090216](https://pubmed.ncbi.nlm.nih.gov/22090216/).
 26. Thygesen K, Alpert JS, Jaffe AS, et al. Universal definition of myocardial infarction. *Circulation.* 2007; 116(22): 2634–2653, doi: [10.1161/CIRCULATIONAHA.107.187397](https://doi.org/10.1161/CIRCULATIONAHA.107.187397), indexed in Pubmed: [17951284](https://pubmed.ncbi.nlm.nih.gov/17951284/).
 27. Al-Attar N. Faculty Opinions recommendation of Guidelines on the management of valvular heart disease (version 2012): the Joint Task Force on the Management of Valvular Heart Disease of the European Society of Cardiology (ESC) and the European Association of Cardio-Thoracic Surgery (EACTS). Faculty Opinions – Post-Publication Peer Review of the Biomedical Literature. 2014, doi: [10.3410/f.718396448.793499638](https://doi.org/10.3410/f.718396448.793499638).
 28. Baumgartner H, Falk V, Bax JJ, et al. 2017 ESC/EACTS Guidelines for the management of valvular heart disease. *Eur Heart J.* 2017; 38(36): 2739–2791, doi: [10.1093/eurheartj/ehx391](https://doi.org/10.1093/eurheartj/ehx391), indexed in Pubmed: [28886619](https://pubmed.ncbi.nlm.nih.gov/28886619/).
 29. Otsuji Y, Handschumacher MD, Schwammenthal E, et al. Insights from three-dimensional echocardiography into the mechanism of functional mitral regurgitation: direct in vivo demonstration of altered leaflet tethering geometry. *Circulation.* 1997; 96(6): 1999–2008, doi: [10.1161/01.cir.96.6.1999](https://doi.org/10.1161/01.cir.96.6.1999), indexed in Pubmed: [9323092](https://pubmed.ncbi.nlm.nih.gov/9323092/).
 30. Yiu SF, Enriquez-Sarano M, Tribouilloy C, et al. Determinants of the degree of functional mitral regurgitation in patients with systolic left ventricular dysfunction: A quantitative clinical study. *Circulation.* 2000; 102(12): 1400–1406, doi: [10.1161/01.cir.102.12.1400](https://doi.org/10.1161/01.cir.102.12.1400), indexed in Pubmed: [10993859](https://pubmed.ncbi.nlm.nih.gov/10993859/).
 31. McInerney A, Marroquin-Donday L, Tirado-Conte G, et al. Managing the patient undergoing transcatheter aortic valve replacement with ongoing mitral regurgitation. *Expert Rev Cardiovasc Ther.* 2021; 19(8): 711–723, doi: [10.1080/14779072.2021.1955347](https://doi.org/10.1080/14779072.2021.1955347), indexed in Pubmed: [34275408](https://pubmed.ncbi.nlm.nih.gov/34275408/).
 32. Zhang K, Fu W, Dai Q, et al. The number of myocardial infarction segments connected to papillary muscle is associated with the improvement in moderate ischemic mitral regurgitation. *Cardiovasc Diagn Ther.* 2022; 12(6): 828–839, doi: [10.21037/cdt-22-301](https://doi.org/10.21037/cdt-22-301), indexed in Pubmed: [36605082](https://pubmed.ncbi.nlm.nih.gov/36605082/).