

The efficacy of IORT (intraoperative radiotherapy) for early advanced breast cancer depending on the time delay of external beam irradiation (EXRT) post conservative breast surgery (CBS)

Agata Celejewska¹, Bogusław Maciejewski², Jerzy Wydmański¹, Krzysztof Skłodowski³

¹Dept. Radiotherapy, M. Skłodowska-Curie National Research Institute of Oncology, Gliwice Branch, Gliwice, Poland

²Div. Research Programmes, M. Skłodowska-Curie National Research Institute of Oncology, Gliwice Branch, Gliwice, Poland

³Dept. Radiotherapy and Chemotherapy I, M. Skłodowska-Curie National Research Institute of Oncology, Gliwice Branch, Gliwice, Poland

Introduction. The following study focuses on the efficacy of the IORT (14.4 izoGy_{2,0}) as part of conservative surgery with adjuvant EXRT (50 Gy in 25 fractions) for low risk 109 early breast cancer patients and 106 intermediate or nonlinear high risk patients with adjuvant chemoradiation or chemotherapy followed by the EXRT.

Material and methods. The accumulation of the rates of local recurrences (LR) and distant metastases (DM) are characterized by nonlinear but two-phase curves.

Results. During the first 5 years, 67% of all LR, and only 43% of all DM occurred, and between the 8th and 10th years the LR curve steeply increases by 25% and the DM by 48%.

Conclusion. This suggest that a 5-year follow-up is too short and should be extended to 10 years. Among the analyzed prognostic factors, the time interval (TI) between IORT and adjuvant EXRT has occurred the major prognostic risk factor. If the TI is extended over 60 days (delayed EXRT), the LR and the DM risk undergoes a 3–10 fold increase. Concurrent CH-EXRT significantly lowers local and distant failures, compared with delayed EXRT after completing CHT. Therefore, delayed EXRT completely ruins the expected efficacy of the IORT.

Key words: IORT, early breast cancer, delayed adjuvant EXRT

Introduction

Since the 1960s when Abe and Takahashi [1] presented the basic rationale and methods of intraoperative radiotherapy (IORT), this method has been widely used alone, or combined with external irradiation (EXRT) and/or chemotherapy (CHT) to improve the treatment outcomes of various malignant tumors, including breast cancer. The results of the IORT as

a single therapy has been critically evaluated [2, 3]. Reitsamer et al. [4] noted no local recurrences of breast cancer after IORT BOOST combined with EXRT, but the follow-up was too short. Herskind et al. [5–7], presenting the radiobiological aspects of the IORT, has focused on the biological advantages of this method. Recently, Fastner et al. [18] published a comprehensive overview of the role of the IORT as the ESTRO IORT TASK

How to cite:

Celejewska A, Maciejewski B, Wydmański J, Skłodowski K. *The efficacy of IORT (intraoperative radiotherapy) for early advanced breast cancer depending on the time delay of external beam irradiation (EXRT) post conservative breast surgery (CBS).* NOWOTWORY J Oncol 2021; 71: 133–138.

This article is available in open access under Creative Common Attribution-Non-Commercial-No Derivatives 4.0 International (CC BY-NC-ND 4.0) license, allowing to download articles and share them with others as long as they credit the authors and the publisher, but without permission to change them in any way or use them commercially.

Force/ACROP recommendations, suggesting this method as a favorable standard of combined therapy for carefully selected locally advanced breast cancer patients. Despite the many studies, it is not easy to interpret the results of various IORT doses combined with EXRT and/or chemotherapy. The majority of studies concentrate on local recurrence as the major end-point, but incidences of distant metastases are usually ignored. Moreover, adjuvant therapy post conservative surgery (CBS) includes various methods, i.e. concurrent chemoradiation, chemotherapy followed by EXRT or the reverse.

For high risk breast cancer patients, the IORT with CBS might not be effective enough mainly, when adjuvant EXRT is delayed, because among others processes, repopulation of the survived cancer cells accelerates, and therefore decreases or even thwarts the expected efficacy of the IORT. It seems that the longer the delay of postop. EXRT, the higher the risk of local recurrence. Because the prognostic importance of the time interval between CBS (IORT) and EXRT has not been evaluated yet, the present study is mainly focused on this topic.

Material

The retrospective clinical material consists of 215 consecutive breast cancer patients (T1–2N0–N+) treated in a single institution. Clinical and pathological characteristics (tab. I) were used to subdivide all cases into two groups, i.e. (A) – 109 cases with low, and (B) – 106 cases with intermediate or high risk of local and/or distant failure (risk factors: poorly differentiated, positive estrogen/progesterone, HER-2 positive, extracapsular nodal involvement, too narrow surgical margins, regional nodal involvement). There were 162 cases with pT1 (75%), and the remaining cases had pT2. Similarly, a 3:1 ratio concerned the incidence of pN0 versus pN+. In the group A dominated pT1N0 whereas pT2N+ in the group B. A higher rate (45%) of pN+ was in group B, compared to a marginal rate (4%) in group A.

Methods

Treatment characteristics

During CBS, all cases received intraoperative radiotherapy (IORT) performed using the INTRABEAM mobile device emitting low energy X-rays (20–50 kV). Spherical applicators were tailored to the size of the postoperative tumor bed. The planned dose covered 0.5–1 cm of the tissue surrounding the postoperative margin, and usually a single dose of 5 Gy

was delivered. Since the RBE for X-rays of 20-50 kV is higher (~1.5–1.6) than that for high energy photons (~1.0), an effective IORT single dose was 7.5 Gy. Postoperative EXRT used 50 Gy in 25 fractions. To estimate the izoeffective biological dose of these two different schedules, a Normalized Biological Effective Dose (NBED) was calculated using a Linear-Quadratic formula with a/b value of 4.0 Gy:

$$\begin{aligned} \text{NBED}_{\text{TOTAL}} &= \text{RBE} \cdot \text{NBED}_{\text{IORT}} + \text{NBED}_{\text{EXT.}} \\ &= 14.4 \text{ izoGy}_{2.0} + 50 \text{ izoGy}_{2.0} = 64.4 \text{ izoGy}_{2.0} \end{aligned}$$

assuming that EXRT was delivered in the shortest possible time after completing the CBS.

Adjuvant therapy

Postoperative radiotherapy (EXRT) of 50 Gy, given in 25 fractions using 3D-IMRT as a sole adjuvant treatment was delivered to patients in group A. In group B, EXRT was combined with CHT as concurrent chemoradiation (with antracyclin, CTX and 5-Fu) in 62 cases (58%), and in the remaining 42%, EXRT was delayed after completing the CHT. Therefore, the time interval (TI) between CBS (IORT) and adjuvant therapy widely differed between group A and B. In group A, the TI was in the range of 10–45 days, whereas in 74% of the B cases, TI was delayed over 90 days, and in 40% of cases it was even longer than 120 days.

Hormonotherapy (tamoxifen) was additionally administered to 75% of patients and continued up to 5 years after completing combined therapy.

End-points

A ten-year follow-up was the only end-point to estimate the incidence of local recurrence free (LRFS) and distant metastases-free (DMFS) survival. The relationships between the accumulated incidence of LR and DM during the follow-up and the sequence of adjuvant treatment, including the TI between CBS (IORT) and the EXRT, were counted using the Spearman correlation, the multivariate Cox' regression analysis and the t-Student test modified by Yates. An estimate of $p < 0.05$ was accepted as a level of significance.

Results

The actuarial 10-year local tumor control (LTC) was 94.4% (97.1% in gr. A and 91.6% in gr. B), and disease-free survival (DFS) of 84.8% (93.5% in gr. A and 74.2% in gr. B).

Incidence and kinetics of local and distant failures

There were 12 local recurrences (LR – 5.6%) and 21 distant metastases (DM – 9.7%) during the 10-year follow-up. Although overall incidence of the LR or DM was not high, the LR rate in group B doubled when compared with group A; the DM incidence in group B was 4-times higher than in group A. Accumulation of the LR and the DM rates during the 10-year follow-up did not regularly and gradually increase, what is unusual attribute of these events. On the contrary, two-phase

Table I. Clinical material characteristics

pT, N stage	Group A (n = 109)	Group B (n = 106)	Overall (n = 215)
pT1	95–87%	67–63%	162–75%
pT2	14–13%	39–37%	54–25%
pN0	105–96%	56–55%	161–75%
pN+	4–4%	48–45%	52–24%

Table II. Number, overall and accumulated rates of Local recurrences and distant metastases during three time intervals within 10-year follow-up

Factors	Follow-up in years			Significance (p)
	1-5	6-7	8-10	
local recurrence				
number (No.)	8	1	3	<0.005
overall rate	3.7%	0.5%	1.4%	-
accumulated rate	67%	75%	100%	-
distant metastases				
number (no.)	9	2	10	<0.0001
overall rate	4.1%	0.9%	4.7%	-
accumulated rate	43%	52%	100%	-

accumulation curves representing both types of failure were noted. The first phase concerns the 5-year follow-up, during which the accumulated rate of the LR gradually increased to 67%, and the DM to 43% (tab. II).

During the next two years (6th and 7th), the LR and DM rates slowed down, showing more or less a “plateau effect”, and during the 8th to 10th year the accumulated rate of the LR steeply increased by 25%, and the DM by 48%. It seems that such an irregular accumulation rate of both failures might be explained by the biological and prognostic inhomogeneity of the two groups of patients with low vs. intermediate or high risk, and by the different aggressiveness of combined treatment modalities, lower in group A, and higher in group B.

The impact of the time interval (TI) between CBS (IORT) and adjuvant therapy on treatment outcomes

In 82 cases (75%) in group A, the TI ranged from 10 to 45 days, and in the remaining 27 cases (25%) the postoperative EXRT was delayed to over 60 days (for unknown reasons). On the contrary, in 28 cases (26%) in group B, the TI was shorter than 60 days (all received concurrent chemoradiation). Therefore,

the TI of 60 days was arbitrarily chosen as the “TI cut-off limit”. Table III shows that the duration of the TI had significant ($p < 0.005$) impact on the incidence of the LR, which in group A and B did not occur if the TI was shorter than 40 days (fig.1). However, the kinetics of the DM differed. For the TI up to 60 days it was low (1.2%) in group A, but in group B it was much higher, up to 14%. When the TI gradually extended above 80 days, the incidence of the LR and the DM significantly ($p < 0.001$) increased, being much higher in group B than A.

Extension of the TI in group B depended on whether EXRT was delivered concurrently with CHT or was delayed after completing CHT. The retrospective character of the analysis does not explain the reason for the two different ways of treatment decision. The delayed EXRT after completing CHT resulted in a 5-fold higher incidence of the LR ($p < 0.005$) and more than doubled incidence of the DM ($p < 0.001$). Figure 1 suggests that postoperative adjuvant therapy should begin as soon as possible but not later than 40–50 days after completing CBS (IORT). Furthermore, for patients in group B (intermediate or high risk) optimally effective is concurrent CHT-EXRT, which lower the risk of both the LR and the DM (tab. IV).

Table III. Incidence of local recurrences (LR) and distant metastases (d. meta) in the group A and B depending on time interval (TI) between CBS (IORT) and adjuvant EXRT. For TI 60 days was accepted as border time

Border time				
	← 2.0		60 days	→ 140
	LR	dist. meta	LR	d. meta
group A	0/82	1/82 – 1.2%	3/27 – 11%	3/27 – 11%
group B	0/28	4/28 – 14.3%	9/78 – 11.5%	13/78 – 17%
all	0/110	5/110 – 4.5%	12/105 – 11%	16/105 – 15%

_____ p < 0.005 _____

_____ p < 0.001 _____

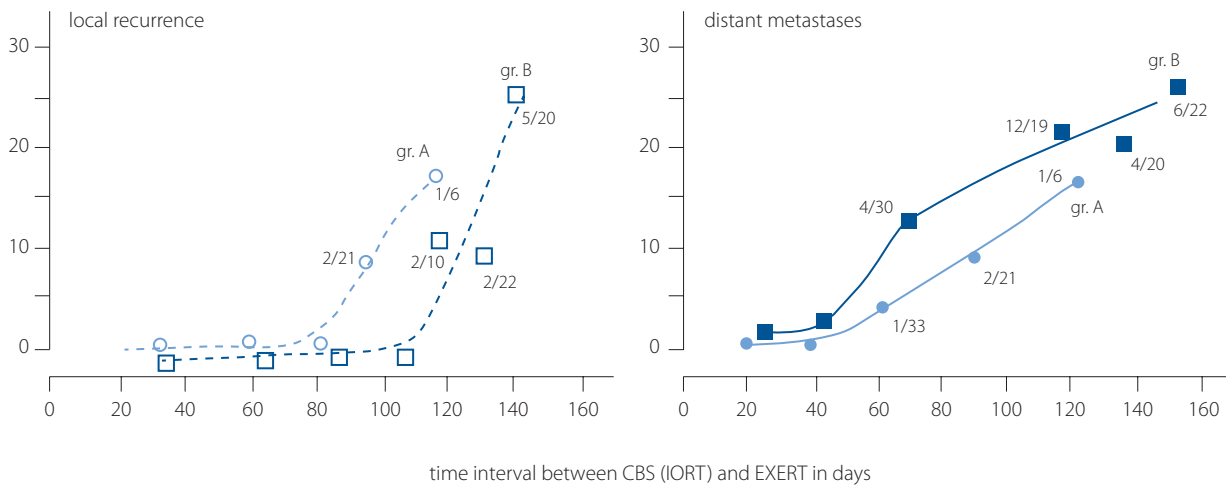


Figure 1. Incidence of local recurrence (LR) and distant metastases (DM) in the group A and B depending on time interval (TI) between CBS (IORT) and EXRT

Table IV. 10-year failure rates depending on the sequence of postoperative combined therapy in the group B

Sequence of postoperative therapy	Failures during 10-year follow-up	
	LR	dist. meta
concurrent cht-exrt	2/62 – 3%	6/62 – 10%
cht followed by exrt	7/44 – 16%	12/4 – 27%
significance (p)	<0.005	<0.001

Multivariate analysis (tab.V) shows that pN is the strongest risk factor of the DM together with the number of involved regional nodes. If their number increases, i.e. from 1 to 5 positive nodes, the DM-HR (hazard ratio) becomes about 2.5-times higher (3.65/1.36 – see the bottom of tab. V). The highest LR risk factor strongly correlated with the EXRT delayed after completing CHT (HR = 14.28). If the TI between CBS (IORT) was 80 days (20 days longer than the TI cut-off limit of 60 days), HR increases to $1.02^{20} = 1.485$, which means an increase of the LR and the DM by about 48%, compared with that related to

the TI of 60 days or less. On the contrary, concurrent chemoradiation resulted in significant ($p < 0.001$) decrease of the LR risk by about 94% and the DM risk by 66%. The OTT of the EXRT was more or less the same (about 35 days) in all cases, therefore its prognostic power can be neglected, but the time interval between CBS (IORT) and the start of the postop. EXRT seems to be the major determinant of the LR and DM risk, mainly in group B, if the EXRT was considerably delayed after completing the CHT.

Discussion

Since Veronesi [8] and Bartelink [9, 10] convincingly documented that early advance breast cancer patients need adjuvant radiotherapy after CBS, it was recognized that EXRT alone is not effective enough (7–15% LR), especially for intermediate or high risk patients (11–15%). It became obvious that conventional adjuvant EXRT needs a boost dose. Intraoperative radiotherapy using a single dose became an interesting solution. Although the use of IORT and adjuvant EXRT in the early

Table V. Results of multivariate Cox' regression analysis of the LR and DM risk factors

Factors	LR		DM	
	HR	(p)	HR	(p)
pT	1.95	0.021	2.28	0.014
pN	2.6	0.001	4.75	0.0004
number of involved regional nodes (x)	1.18 ^x	0.32	1.36 ^x	0.0001
time interval (TI) between IORT and EXRT	4.83	0.013	1.29	0.62
delayed time of EXRT after IORT above 60 days (n – days > 60)	1.02 ⁿ	0.0008	1.02 ⁿ	0.0007
concurrent CHT-EXRT	0.07*	0.0014	0.34*	0.035
EXRT delayed after completing CHT	14.28	0.001	2.94	0.035

[^x – if x = 1 then HR = 1.18, but for x = 5, $HR_{LR} = (1.18)^5 - 1 = 1.29$ and $HR_{DM} = (1.36)^5 = 3.65$

ⁿ – if TI increases by 20 days above 60 d limit then $HR = (1.02)^{20} = 1.485$ means an increase of LR/DM by 48.5% of that for TI ≤ 60 days

* – risk of LR decreases by 93% ($1 - HR = 1 - 0.07 = 0.93$) and DM by 66% ($1 - HR = 1 - 0.34 = 0.66$) compared with those for sequential EXRT after CH

stages of breast cancer with no or low risk factors raised some doubts, Van Dongen et al. [16] and Clark et al. [17] strongly recommended IORT as a boost method preceding CBS. A recent comprehensive overview of the role of IORT in breast conserving therapy [18] provides the largest evidence of the high efficacy of the IORT with a single dose of 10–20 Gy, using electron beams. However, in the majority of the presented studies, the follow-up was shorter than 10 years (3–8 years). The IORT single dose of 14.4 izeGy₂₀ used in the present study is within the range of electron IORT doses of 10–20 Gy, due to the higher RBE of 20–50 kV X-rays, compared with that of electrons (RBE = 1.0). It is surprising that the recent ESTRO IORT TASK [18] aspires to recommend IORT but it raises some doubts and uncertainties. Local control and overall survival have been the only end-points and are related on average to only a 5-year actuarial follow-up, and the DM incidence has not been considered. The present study shows that beside the LR, the DM risk should not be ignored. Moreover, both failures accumulate nonlinearly during the follow-up (tab. II), and the 5-year follow-up is definitely too short, because about 30% of the LR and 55% of the DM can easily be missed, since they may occur later mainly between the 7th to 10th year of the follow-up.

A recent ESTRO IORT TASK overview is focused on stage I–II breast cancer patients but no/low and intermediate/high risk patients are pulled together, whereas our study suggests that these two groups should be analyzed separately.

Bellon et al. [19] pointed out that sequence of CHT and EXRT for intermediate/high risk patients plays a very important role, but in the ESTRO TASK overview, the time interval (TI) between IORT and adjuvant EXRT was not accounted, for similarly to Vaidya et al. [20, 21] in the TARGIT-A trial. On the contrary, multivariate analyses in the present study indicates the TI as the major determinant of the LR and DM risk. Considerable delay of the EXRT after completing postoperative CHT leads to the highest risk of the LR (HR = 14.28), even in the low risk group, where lengthening the TI over 60 days resulted in an increase of the LR from 0% to 11%, and the DM from 1.2% to 11% (tab. III). A similar trend was also noted in group B. It may suggest that the TI lengthened over 60 days can completely ruin the efficacy of the IORT considered as a boost dose, and therefore, the necessity of its application might be questioned.

Conclusions

The present study suggests that the IORT as a part of conservative combined therapy for early stage breast cancer patients can be an effective boost, but only when the time interval (TI) between the IORT and EXRT is as short as possible. For intermediate/high risk patients, concurrent chemoradiation is highly advantageous to the CHT followed by the EXRT because this sequence lengthens the TI between the IORT and EXRT, and therefore it wastes therapeutic efficacy of the IORT as a boost dose. Finally, it seems that a 10-year follow-up should be considered as standard because in the

shorter period (i.e. 5 years) about 40% of LR and even more DM can easily be missed.

Conflict of interest: none declared

Bogusław Maciejewski

Div. Research Programmes

M. Skłodowska-Curie National Research Institute of Oncology

Gliwice Branch

ul. Wybrzeże Armii Krajowej 15

44-102 Gliwice, Poland

e-mail: boguslaw.maciejewski@io.gliwice.pl

Received: 8 Dec 2020

Accepted: 15 Dec 2020

References

1. Abe M, Takahashi M. Intraoperative Radiation Therapy. Procc Illrd Int. Symp on Intraoperative Radiation Therapy. Philadelphia and Pergamon Press 1991.
2. Vaidya JS, Wenz F, Bulsara M, et al. TARGIT trialists' group. Risk-adapted targeted intraoperative radiotherapy versus whole-breast radiotherapy for breast cancer: 5-year results for local control and overall survival from the TARGIT-A randomised trial. *Lancet*. 2014; 383(9917): 603–613, doi: 10.1016/S0140-6736(13)61950-9, indexed in Pubmed: 24224997.
3. Veronesi U, Orecchia R, Maisonneuve P, et al. Intraoperative radiotherapy versus external radiotherapy for early breast cancer (ELIOT): a randomised controlled equivalence trial. *Lancet Oncol*. 2013; 14(13): 1269–1277, doi: 10.1016/S1470-2045(13)70497-2, indexed in Pubmed: 24225155.
4. Reitsamer R, Sedlmayer F, Kopp M, et al. The Salzburg concept of intraoperative radiotherapy for breast cancer: results and considerations. *Int J Cancer*. 2006; 118(11): 2882–2887, doi: 10.1002/ijc.21727, indexed in Pubmed: 16381011.
5. Herskind C, Steil V, Kraus-Tiefenbacher U, et al. Radiobiological aspects of intraoperative radiotherapy (IORT) with isotropic low-energy X rays for early-stage breast cancer. *Radiat Res*. 2005; 163(2): 208–215, doi: 10.1667/rr3292, indexed in Pubmed: 15658897.
6. Herskind C, Griebel J, Kraus-Tiefenbacher U, et al. Sphere of equivalence—a novel target volume concept for intraoperative radiotherapy using low-energy X rays. *Int J Radiat Oncol Biol Phys*. 2008; 72(5): 1575–1581, doi: 10.1016/j.ijrobp.2008.08.009, indexed in Pubmed: 19028280.
7. Herskind C, Wenz F. Radiobiological aspects of intraoperative tumour-bed irradiation with low-energy X-rays (LEX-IORT). *Trans Cancer Res*. 2014; 3: 3–17.
8. Veronesi U, Luini A, Del Vecchio M, et al. Radiotherapy after breast-preserving surgery in women with localized cancer of the breast. *N Engl J Med*. 1993; 328(22): 1587–1591, doi: 10.1056/NEJM199306033282202, indexed in Pubmed: 8387637.
9. Bartelink H, Horiot JC, Poortmans P, et al. European Organization for Research and Treatment of Cancer Radiotherapy and Breast Cancer Groups. Recurrence rates after treatment of breast cancer with standard radiotherapy with or without additional radiation. *N Engl J Med*. 2001; 345(19): 1378–1387, doi: 10.1056/NEJMoa010874, indexed in Pubmed: 11794170.
10. Vrieling C, van Werkhoven E, Maingon P, et al. European Organisation for Research and Treatment of Cancer, Radiation Oncology and Breast Cancer Groups, EORTC Radiation Oncology and Breast Cancer Groups, European Organisation for Research and Treatment of Cancer Radiation Oncology and Breast Cancer Groups. Whole-breast irradiation with or without a boost for patients treated with breast-conserving surgery for early breast cancer: 20-year follow-up of a randomised phase 3 trial. *Lancet Oncol*. 2015; 16(1): 47–56, doi: 10.1016/S1470-2045(14)71156-8, indexed in Pubmed: 25500422.
11. Kraus-Tiefenbacher U, Bauer L, Scheda A, et al. Intraoperative radiotherapy (IORT) is an option for patients with localized breast recurrences after previous external-beam radiotherapy. *BMC Cancer*. 2007; 7: 178, doi: 10.1186/1471-2407-7-178, indexed in Pubmed: 17854511.
12. Veronesi U, Cascinelli N, Mariani L, et al. Twenty-year follow-up of a randomized study comparing breast-conserving surgery with radical mastectomy for early breast cancer. *N Engl J Med*. 2002;

- 347(16): 1227–1232, doi: 10.1056/NEJMoa020989, indexed in Pubmed: 12393819.
13. Bartelink H, Horiot JC, Poortmans PM, et al. Impact of a higher radiation dose on local control and survival in breast-conserving therapy of early breast cancer: 10-year results of the randomized boost versus no boost EORTC 22881-10882 trial. *J Clin Oncol.* 2007; 25(22): 3259–3265, doi: 10.1200/JCO.2007.11.4991, indexed in Pubmed: 17577015.
 14. Holland R, Veling S, Mravunac M, et al. Histologic multifocality of T1–2 breast carcinomas implications for clinical trials of breast-conserving surgery. *Cancer.* 1985; 56(5): 979–990, doi: 10.1002/1097-0142(19850901)56:5<979::aid-cnrcr2820560502>3.0.co;2-n.
 15. Clarke M, Collins R, Darby S, et al. Early Breast Cancer Trialists' Collaborative Group (EBCTCG). Effects of radiotherapy and of differences in the extent of surgery for early breast cancer on local recurrence and 15-year survival: an overview of the randomised trials. *Lancet.* 2005; 366(9503): 2087–2106, doi: 10.1016/S0140-6736(05)67887-7, indexed in Pubmed: 16360786.
 16. van Dongen JA, Voogd AC, Fentiman IS, et al. Long-term results of a randomized trial comparing breast-conserving therapy with mastectomy: European Organization for Research and Treatment of Cancer 10801 trial. *J Natl Cancer Inst.* 2000; 92(14): 1143–1150, doi: 10.1093/jnci/92.14.1143, indexed in Pubmed: 10904087.
 17. Clark RM, McCulloch PB, Levine MN, et al. Randomized clinical trial to assess the effectiveness of breast irradiation following lumpectomy and axillary dissection for node-negative breast cancer. *J Natl Cancer Inst.* 1992; 84(9): 683–689, doi: 10.1093/jnci/84.9.683, indexed in Pubmed: 1314910.
 18. Fastner G, Gaisberger C, Kaiser J, et al. ESTRO IORT Task Force/ACROP recommendations for intraoperative radiation therapy with electrons (IOERT) in breast cancer. *Radiother Oncol.* 2020; 149: 150–157, doi: 10.1016/j.radonc.2020.04.059, indexed in Pubmed: 32413529.
 19. Bellon JR, Come SE, Gelman RS, et al. Sequencing of chemotherapy and radiation therapy in early-stage breast cancer: updated results of a prospective randomized trial. *J Clin Oncol.* 2005; 23(9): 1934–1940, doi: 10.1200/JCO.2005.04.032, indexed in Pubmed: 15774786.
 20. Vaidya JS, Bulsara M, Baum M, et al. Long term survival and local control outcomes from single dose targeted intraoperative radiotherapy during lumpectomy (TARGIT-IORT) for early breast cancer: TARGIT-A randomised clinical trial. *BMJ.* 2020; 370: m2836, doi: 10.1136/bmj.m2836, indexed in Pubmed: 32816842.
 21. Vaidya J, Bulsara M, Saunders C, et al. Effect of Delayed Targeted Intraoperative Radiotherapy vs Whole-Breast Radiotherapy on Local Recurrence and Survival. *JAMA Oncol.* 2020; 6(7): e200249, doi: 10.1001/jamaoncol.2020.0249.