

Available online at www.sciencedirect.com

ScienceDirect

journal homepage: <http://www.elsevier.com/locate/pjnns>

Case report

A case with CMTX1 disease showing transient ischemic-attack-like episodes

Zehra Aktan^{a,1}, Nihan Hande Akcakaya^{b,c,1,*}, Pinar Tekturk^d, Engin Deniz^e, Bahar Koyuncu^f, Zuhal Yapici^d^a Health Sciences University, Istanbul Fatih Sultan Mehmet Training and Research Hospital, Department of Neurology, Istanbul Turkey^b Istanbul University, Aziz Sancar Institute of Experimental Medicine, Department of Genetics, Istanbul Turkey^c Spastic Childrens' Foundation of Turkey (TSCV), Neurology Consultant, Istanbul Turkey^d Istanbul University, Istanbul Medical Faculty, Department of Neurology, Division of Child Neurology, Istanbul Turkey^e Maltepe University Medical Faculty, Department of Pediatrics, Division of Child Neurology, Istanbul Turkey^f Memorial University Hospital, Department of Neurology, Stroke Center, Istanbul Turkey

ARTICLE INFO

Article history:

Received 13 July 2017

Accepted 31 October 2017

Available online 9 November 2017

Keywords:

Transient ischemic-attack-like

Stroke-like

CMTX1

GJB1

Pes cavus

ABSTRACT

Charcot-Marie-Tooth (CMT) disease is a hereditary neurologic disease which affects the sensorial and motor fibers of the peripheral nerves. CMTX1 is an X-linked dominantly inherited subtype of CMT and is caused by mutations in gap junction beta 1 gene (*GJB1*). A small proportion of *GJB1* mutations are associated with recurrent central nervous system findings. We describe a 15-year-old male patient with CMTX1 who had stroke-like findings along with foot deformities and peripheral neuropathy. Strokes and stroke-like attacks are rarely seen in children and adolescents. Herein, neurological signs, MRI findings and genetic results of a CMTX1 case are presented and discussed.

© 2017 Polish Neurological Society. Published by Elsevier Sp. z o.o. All rights reserved.

1. Introduction

Charcot-Marie-Tooth (CMT) disease, which affects the sensorial and motor fibers of the peripheral nerves, comprises a

group of hereditary neuropathies and is among the most commonly seen hereditary neurologic diseases. CMTX1, an X-linked dominantly inherited type of the disease, comprises 7–10% of all CMT cases [1]. CMTX1 results from mutations taking place in gap junction beta 1 (*GJB1*), which encodes connexin32 protein (Cx32) [2].

* Corresponding author at: Istanbul University, Aziz Sancar Institute of Experimental Medicine (ASDETAE), Department of Genetics, Capa/Istanbul 34093, Turkey.

E-mail address: nhakcakaya@gmail.com (N.H. Akcakaya).

¹ These authors contributed equally to this study.

<https://doi.org/10.1016/j.pjnns.2017.10.016>

0028-3843/© 2017 Polish Neurological Society. Published by Elsevier Sp. z o.o. All rights reserved.

As in the classical CMT presentation, lower extremities typically become affected early in the course of CMTX1, and in its slow progression, the disease causes distal muscular weakness, atrophy, sensorial loss, foot deformities, and areflexia [1]. Unlike in other types of CMT, reversible white matter lesions can be detected in CMTX1 [2]. CNS involvement is thought to be a result of the expression of Cx32 both in oligodendrocytes and Schwann cells [3].

2. Case report

A 15-year old male presented to the Emergency Department with acute right-sided hemiparesis, which recovered within 8 h. On the second day he experienced anarthria and left-sided hemiplegia, which recovered within 12 h. On the third day, he suffered from various acute neurological problems as follows: transient anarthria, upward gaze paresis, pseudobulbar findings, right hemiplegia, and trunk ataxia. Neurological examination revealed that deep tendon reflexes were hypoactive/aboli, and hammer toe/pes cavus deformity was remarkable (Fig. 1). Brain MRI showed that there were bilateral periventricular deep white matter, capsula interna, and corpus callosum involvement. These lesions had a tendency to confluency, showed diffusion limitation, and appeared hyperintense in the T2 and FLAIR sequences, but there was no contrast enhancement (Fig. 2). Intra and extra-cranial CT angiographies were normal. Level of protein in the CSF was 77.3 mg/dl (15–45 mg/dl) and that of IgG was 8.4 mg/dl (3.6–6.1 mg/dl). CSF was free of cells, and the lactate levels both in CSF and blood were within normal limits. EMG showing demyelination combined with axonal degeneration. Hearing and eye tests as well as cardiac examination were normal. Genetic testing revealed a hemizygous mutation, c.542T>C; p.V181A (NM_001097642), in *GJB1* gene. Lesions were noticed to regress in the MRI taken two weeks later. During the 2-year follow-up, the complaints of the patient resolved and did not reoccur.

3. Discussion

Compared to adults, strokes and stroke-like attacks are rarely seen in children and adolescents. Besides, their etiologies are



Fig. 1 – Pes cavus deformity.

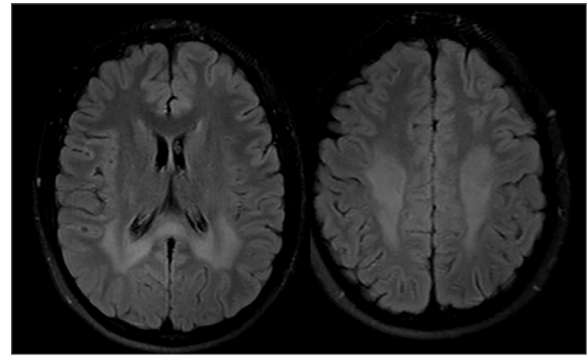


Fig. 2 – Bilateral periventricular, symmetrical and confluent hyperintense lesions during the stroke-like attack at axial FLAIR MR images. The hyperintense lesions are marked in the posterior regions, and subcortical U-fibers are preserved.

not the same as those in adults [4]. Among the vascular and intravascular etiologies are Moyamoya, vascular malformations, sinus thrombosis, cardiac diseases, trauma, collagen vascular diseases, sickle cell anemia, thrombocyte pathologies, genetic factors resulting in strokes like Factor V Leiden and prothrombin gene mutations, as well as encephalitis and meningitis with an autoimmune or infectious etiology. All these factors should be investigated within a specific algorithm in children with transient acute hemiparesis or focal neurological deficits. Migraine and mitochondrial diseases may lead to similar episodes. Nevertheless, these two are among the principal etiological factors with limited laboratory indicators. What can be determined in the case of migraine are non-specific signals and in that of mitochondrial diseases, transient, patch-like T2, FLAIR hyperintensities. Family history and accompanying clinical symptoms may be very helpful and guiding when algorithms for diagnosis are evaluated.

Symptoms in CMTX1 usually occur during late childhood and adolescence. The age interval at which the disease is most frequently seen is between 7 and 26 years. Compared to women, CMTX1 has a tendency to occur earlier in men and its course is more severe [1,5,6]. Gait disturbance is the most frequently encountered initial symptom [5]. It is when this symptom begins that a slight decrease in nerve conduction velocity occurs along with a mild lengthening in distal latency and F-latency, as well as a decrease in amplitude. EMG findings indicate the presence of both axonal and demyelinating involvement. Apart from its typical clinical features, CMTX1 has been reported to cause the below conditions in a small proportion of patients: sensorineural hearing loss, tremor in hands, pathologic fractures, recurrent CNS findings, and reversible changes in white matter [2].

Nicholson et al. are the first to demonstrate that evoked potential anomalies are the indicators of the CNS involvement in CMTX1 [7]. Severe CNS dysfunction in this disease is rather rare. Neurological deficits with an acute or subacute onset, or with a fluctuating course are often episodic and reversible. The severity of CNS involvement does not correlate with that of peripheral neuropathy [2]. Some of the predisposing factors are as follows: fever, exercise, traveling to higher or lower

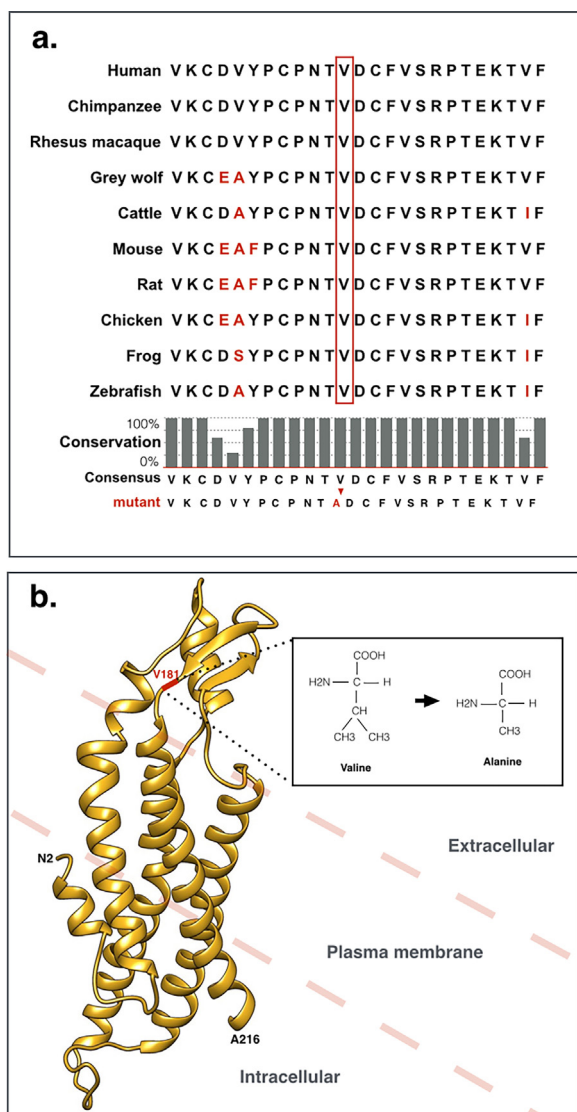


Fig. 3 – (a) The evolutionary conservation of valine at position 181 is shown with multiple sequence alignments (marked with a red box) among human (*H. sapiens*; NP 000157.1), chimpanzee (*P. troglodytes*; XP 521117.1), Rhesus monkey (*M. mulatta*; XP 001101168.1), gray wolf (*C. lupus*; XP 538073.1), cattle (*B. taurus*; XP 776494.1), mouse (*M. musculus*; NP 032150.2), rat (*R. norvegicus*; NP 058947.1), chicken (*G. gallus*; XP 989702.1), frog (*X. tropicalis*; NP 001921623.4), and zebrafish (*D. rerio*; XP 001001240.1). **(b)** 3D structural model prediction of human Cx32 is seen. Cx32 is a transmembrane protein that crosses the plasma membrane four times. The substitution at position 181 (red) is localized at the extracellular coil between the 3rd and 4th alpha helix. The structural model was generated using UCSF chimeraX (<https://www.cgl.ucsf.edu/chimeraX/>) based on the crystal structure of human connexin 26 (PDB: 2zw3) [9]. Schematic plasma membrane localization is estimated. (For interpretation of the references to color in this figure legend, the reader is referred to the web version of this article.)

altitudes, hyperventilation following emotional stress, and infectious diseases [2,6]. Interestingly, the same mutation has been previously reported in a family with early-onset, severe peripheral neuropathy however, CNS involvement was not described in this family [8].

In CMTX1 cases with CNS dysfunction attacks, MRI shows hyperintense signals that have no contrast enhancement, but involve the symmetrical corpus callosum (especially the splenium), periventricular white matter, capsula interna, and cerebellar peduncle. They are more marked in the posterior regions and subcortical U-fibers are preserved [2]. The presence of diffusion limitation in the affected areas suggests transient myelin vacuolation. There is a report of a case in whose MRI contrast enhancement was observed and in whom the disease followed a demyelinating course [2]. The disease has no specific treatment [1,5,6]. Clinical and radiological findings generally disappear spontaneously [2,5,6].

There is as yet no hotspot for Cx32 mutations associated with CNS symptoms [5,6]. How the mutations affect the molecular mechanism is not clear. The substitution of valine into alanine, in our patient, may disrupt the topology of Cx32 by reducing the hydropathy index at position 181 (Fig. 3) [9]. The amino acid substitution was predicted to be damaging to protein function by the PolyPhen-2 (<http://genetics.bwh.harvard.edu/pph2/>), MutationTaster (<http://www.mutationtaster.org/>). Disruption of the Cx32 topology affects the function of oligodendrocytes and results in transient stroke-like symptoms as well as reversible white matter lesions.

The below diseases and conditions form a large list of etiologies in young patients with stroke-like attacks: mitochondrial diseases, Moyamoya, familial hemiplegic migraine, collagen vascular diseases, hematologic factors. Abolic reflexes and prominent pes cavus deformities are strong clinical data and can be a good guide to diagnosis. Stroke-like attacks associated with CMTX1 have been well defined in recent years and should be considered in differential diagnosis.

Conflict of interest

None declared.

Ethics

The clinical data of the patient are used in manuscript also after written consent obtained.

Acknowledgement and financial support

None declared.

REFERENCES

- [1] Saporta AS, Sottile SL, Miller LJ, Feely SME, Siskind CE, Shy ME. Charcot Marie Tooth disease subtypes and genetic testing strategies. *Ann Neurol* 2011;69:22–33.

-
- [2] Wang Y, Yin F. A review of X-linked Charcot-Marie-Tooth disease. *J Child Neurol* 2016;31:761–72.
 - [3] Scherer SS, Deschênes SM, Xu YT, Grinspan JB, Fischbeck KH, Paul DL. Connexin32 is a myelin-related protein in the PNS and CNS. *J Neurosci* 1995;15:8281–94.
 - [4] Kirton A. Paediatric stroke: pressing issues and promising directions. *Lancet Neurol* 2015;14:92–102.
 - [5] Yiu EM, Geevasinga N, Nicholson GA, Fagan ER, Ryan MM, Ouvrier RA. A retrospective review of X-linked Charcot-Marie-Tooth disease in childhood. *Neurology* 2011;76:461–6.
 - [6] Al-Mateen M, Craig AK, Chance PF. The central nervous system phenotype of X-linked Charcot-Marie-Tooth disease. A transient disorder of children and young adults. *J Child Neurol* 2014;29:342–8.
 - [7] Nicholson G, Corbett A. Slowing of central conduction in X-linked Charcot-Marie-Tooth neuropathy shown by brain stem auditory evoked responses. *J Neurol Neurosurg Psychiatry* 1996;61:43–6.
 - [8] Abrams CK, Freidin MM, Chen L, Dobrenis K, Bargiello TA, Verselis VK, et al. Pathogenesis of Charcot-Marie-Tooth Disease: a new connexin 32 mutation associated with impaired regeneration of large-caliber axons. *Ann Neurol* 2000;48:439.
 - [9] Maeda S, Nakagawa S, Suga M, Yamashita E, Oshima A, Fujiyoshi Y, et al. Structure of the connexin 26 gap junction channel at 3.5 Å resolution. *Nature* 2009;2(458):597–602.