

## *Supplementary material*

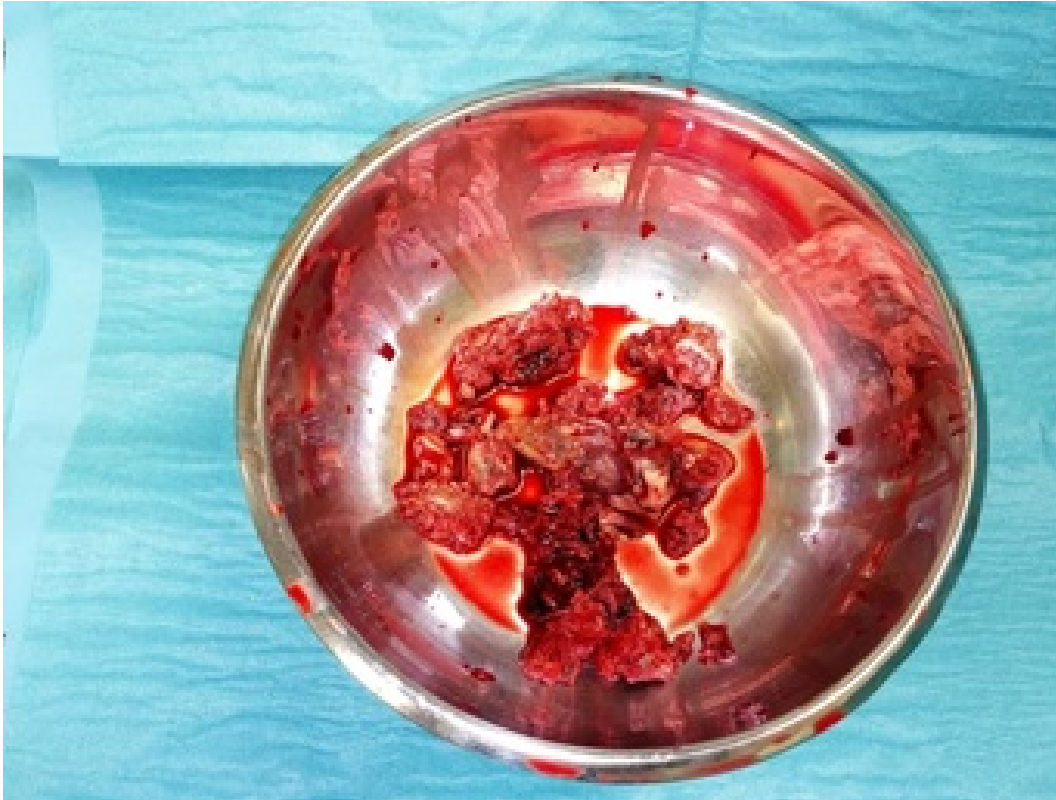
---

*Kaczmarek D, Matuszewska-Brycht O, Drożdż J, et al. A rare discovery in the left atrium — a high-grade sarcoma with cerebral metastasis. Kardiol Pol. 2021.*

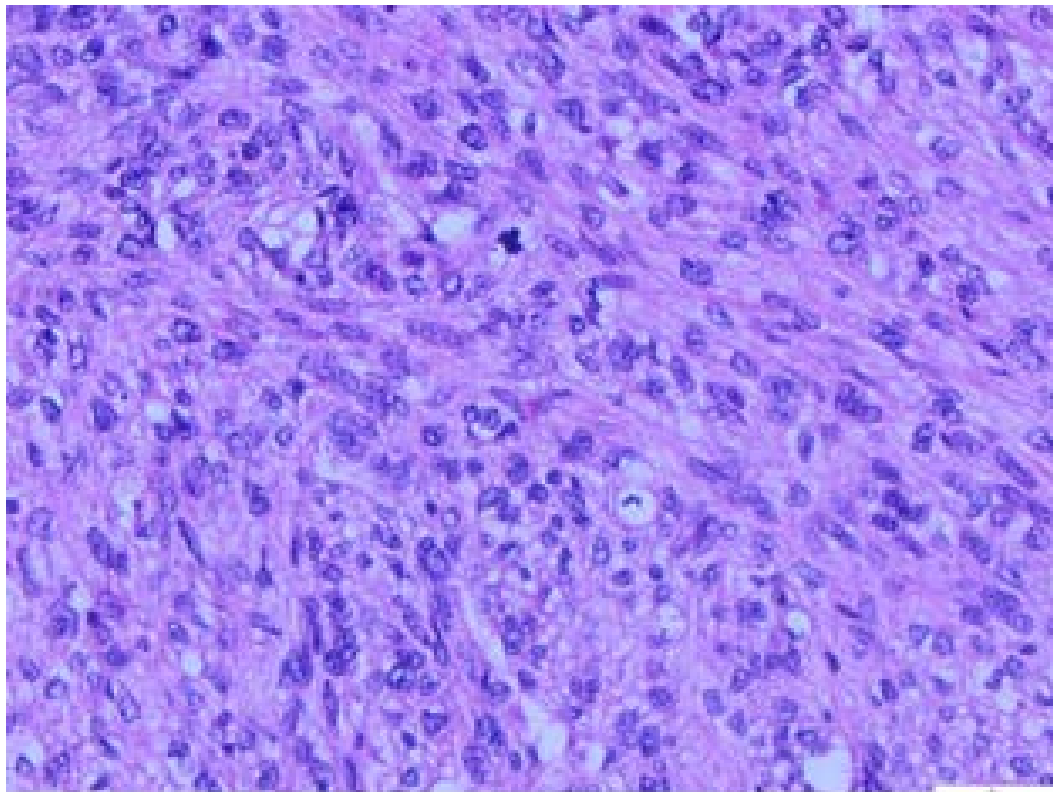
Please note that the journal is not responsible for the scientific accuracy or functionality of any supplementary material submitted by the authors. Any queries (except missing content) should be directed to the corresponding author of the article.



**Figure S1.** Large pathological mass of the left atrium in transesophageal echocardiography



**Figure S2.** Structure removed from the left atrium



**Figure S3.** High-grade sarcoma of the phenotype desmin-; Ki67+; CD34-; CD31-; Melan A-; CK-; SMA-; S100p- in the histopathological examination

**Table 1.** Summary of the previously described cases of primary cardiac sarcoma in the left atrium

	Type of the tumor	Tumor location	Patient's age	Sex category	Symptoms	Used treatment	Survival time after diagnosis
[1]	Synovial sarcoma	Anterior mitral leaflet	66	Male	Excessive fatigue	Surgery, chemotherapy	>6 months
[2]	Undifferentiated pleomorphic sarcoma	Left atrium, under the aortic sinuses	41	Female	Dyspnea	Surgery	15 months
[3]	Undifferentiated sarcoma	Left atrium	26	Female	Dyspnea, productive cough, general soreness	Surgery	3 hours
[4]	Intimal sarcoma	Left atrium	42	Male	Severe fatigue, shortness of breath, general malaise	Surgery	>11 months
[5]	Primary pleomorphic sarcoma	Left atrium, left atrial appendage, left ventricle	59	Male	Progressive cardiac failure	Surgery, chemotherapy	>12 months
[6]	Pleomorphic sarcoma	Left atrium	79	Female	Exertional dyspnea, orthopnea, and paroxysmal nocturnal dyspnea acute pulmonary edema	Surgery	>3 months
[7]	Undifferentiated pleomorphic sarcoma	Left atrium	41	Male	Acute heart failure, shock status	Surgery, proton beam radiotherapy	>12 months
[8]	Undifferentiated angiosarcoma-endothelioma	Left atrium	66	Female	Pericardial tamponade	Surgery	>7 months
[9]	Undifferentiated pleomorphic sarcoma	Left atrium	84	Female	Acute onset dyspnoea, lethargy and repeated haemoptysis	Debulking surgery	4 months

[9]	Myxoid sarcoma	Left atrium extending through the left ventricle	37	Female	Right-sided pleuritic chest pain, high fever, night sweats, dry cough	Surgery, radiotherapy	>12 months
-----	----------------	--	----	--------	---	-----------------------	------------

## 1. REFERENCES

- Miller DV, Deb A, Edwards WD, et al. Primary synovial sarcoma of the mitral valve. *Cardiovasc Pathol.* 2005; 14(6): 331–333, doi: [10.1016/j.carpath.2005.05.002](https://doi.org/10.1016/j.carpath.2005.05.002), indexed in Pubmed: [16286044](https://pubmed.ncbi.nlm.nih.gov/16286044/).
- Kiuchi R, Ikeda M, Miyazu K, et al. Undifferentiated pleomorphic sarcoma in the left atrium; report of a case [article in Japanese]. *Kyobu Geka.* 2008; 61(10): 891–894, indexed in Pubmed: [18788382](https://pubmed.ncbi.nlm.nih.gov/18788382/).
- Hsieh CH, Seak CJ, Chiu TF, et al. An uncommon cause of heart failure: cardiac sarcomas in the left atrium. *J Emerg Med.* 2011; 40(6): e123–e124, doi: [10.1016/j.jemermed.2008.11.025](https://doi.org/10.1016/j.jemermed.2008.11.025), indexed in Pubmed: [19272732](https://pubmed.ncbi.nlm.nih.gov/19272732/).
- Kuurstra EJ, Mullen JC, MacArthur RG. Massive left atrial sarcoma presenting with severe congestive heart failure. *Can J Cardiol.* 2014; 30(10): 1250.e13–1250.e15, doi: [10.1016/j.cjca.2014.03.038](https://doi.org/10.1016/j.cjca.2014.03.038), indexed in Pubmed: [25108492](https://pubmed.ncbi.nlm.nih.gov/25108492/).
- Lake A, Ashraf O, Maywald R, et al. Unique presentation of a primary pleomorphic sarcoma of the left atrium. *Asian Cardiovasc Thorac Ann.* 2015; 23(8): 973–975, doi: [10.1177/0218492314529782](https://doi.org/10.1177/0218492314529782), indexed in Pubmed: [24682338](https://pubmed.ncbi.nlm.nih.gov/24682338/).
- Chong A, Wahi S, Harvey R, et al. An unusual cause of pulmonary edema. *Asian Cardiovasc Thorac Ann.* 2014; 22(3): 338–341, doi: [10.1177/0218492312470117](https://doi.org/10.1177/0218492312470117), indexed in Pubmed: [24585913](https://pubmed.ncbi.nlm.nih.gov/24585913/).
- Abe D, Sato A, Takeyasu N, et al. Life-threatening acute heart failure due to primary cardiac undifferentiated pleomorphic sarcoma. *Intern Med.* 2014; 53(16): 1775–1777, doi: [10.2169/internalmedicine.53.2124](https://doi.org/10.2169/internalmedicine.53.2124), indexed in Pubmed: [25130109](https://pubmed.ncbi.nlm.nih.gov/25130109/).
- Montiel J, Ruyra X, Carreras F, et al. A report of a rare case of primary angiosarcoma of left atrium and a review of the literature [article in Spanish]. *Rev Esp Cardiol.* 1994; 47(11): 768–770, indexed in Pubmed: [7800907](https://pubmed.ncbi.nlm.nih.gov/7800907/).
- Devbhandari MP, Meraj S, Jones MT, et al. Primary cardiac sarcoma: reports of two cases and a review of current literature. *J Cardiothorac Surg.* 2007; 2: 34, doi: [10.1186/1749-8090-2-34](https://doi.org/10.1186/1749-8090-2-34), indexed in Pubmed: [17650338](https://pubmed.ncbi.nlm.nih.gov/17650338/).