

Supplementary material

Kalińczuk Ł, Zieliński K, Mintz GS, et al. Intravascular ultrasound with blood flow visualization to detect pseudo intimal graft dissection as a cause of left ventricular assist device outflow graft stenosis. Kardiol Pol. 2021.

Please note that the journal is not responsible for the scientific accuracy or functionality of any supplementary material submitted by the authors. Any queries (except missing content) should be directed to the corresponding author of the article.

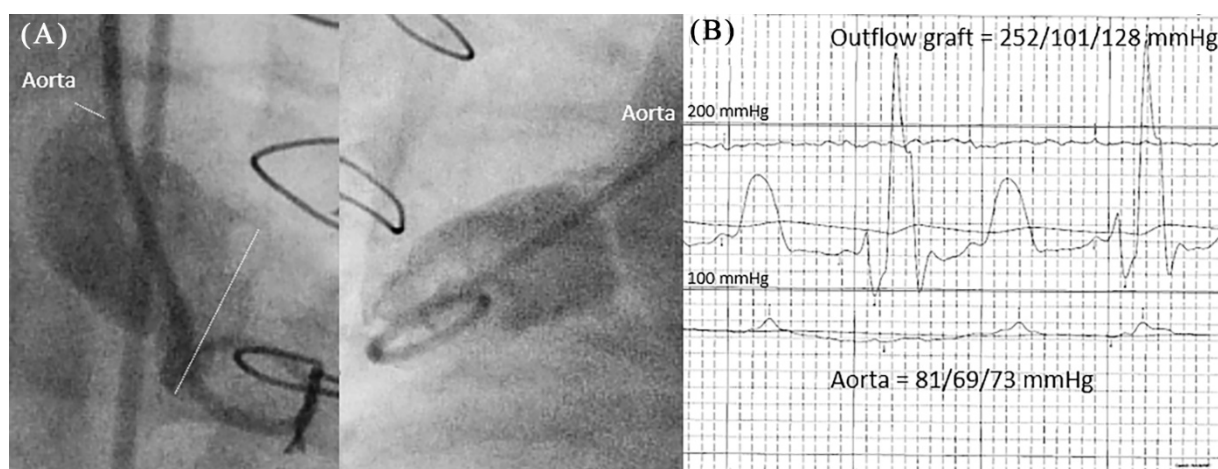


Figure S1. A. Magnified (1.5×) angiographic view of the anastomosis site: 2 orthogonal projections with indicated minimal and reference lumen diameters (*with the dotted lines*). **B.** Simultaneously measured pressures in the distal outflow graft and the aorta

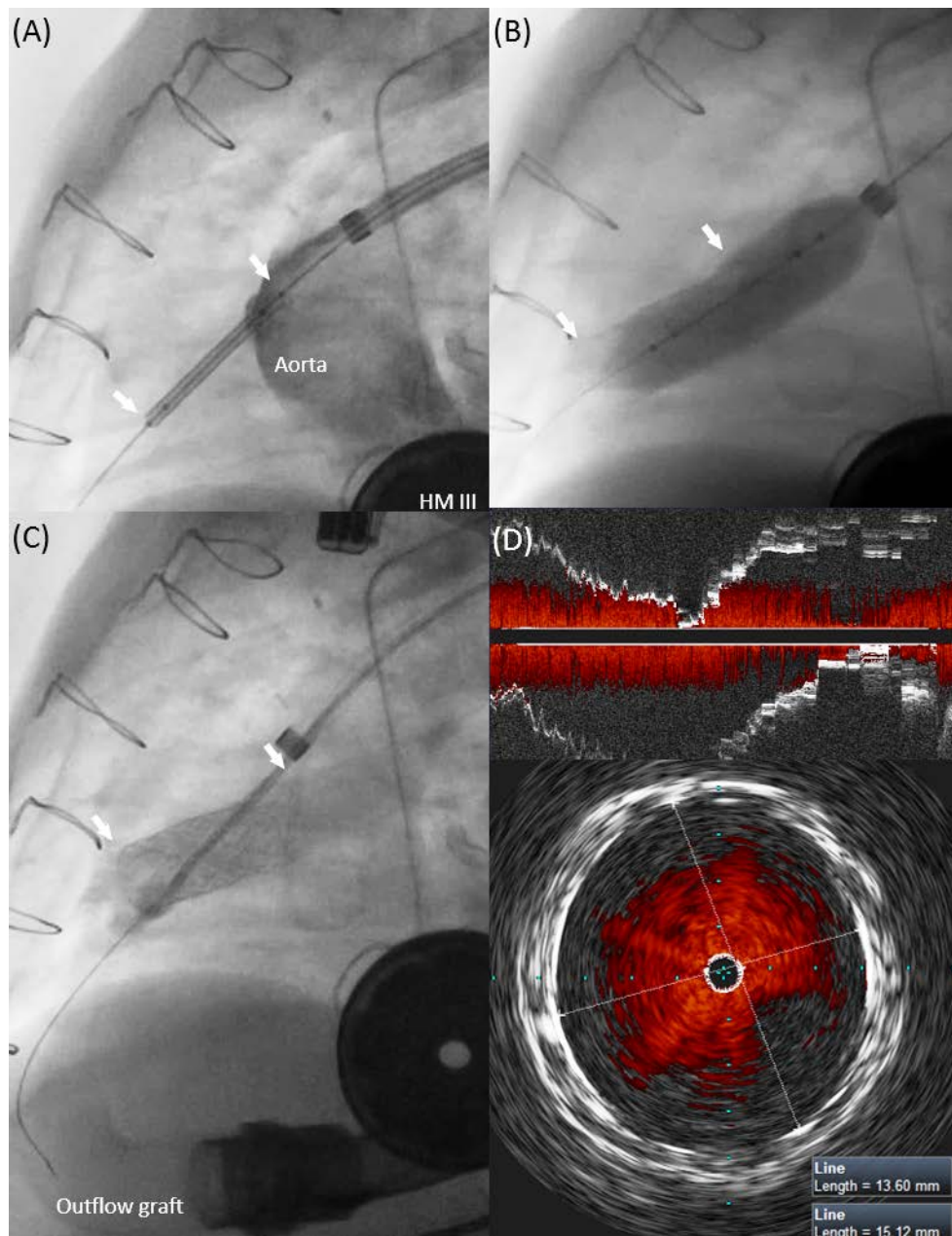


Figure S2. **A.** Stent positioning, with its proximal margin protruding into the aorta (*arrows indicate stent edges*). **B.** Proximal stent optimization with the balloon protruding into the aorta with the final angiographic (**C**) and optimal (stent geometry and apposition) IVUS result (**D**)
Abbreviations: HM III, HeartMate III