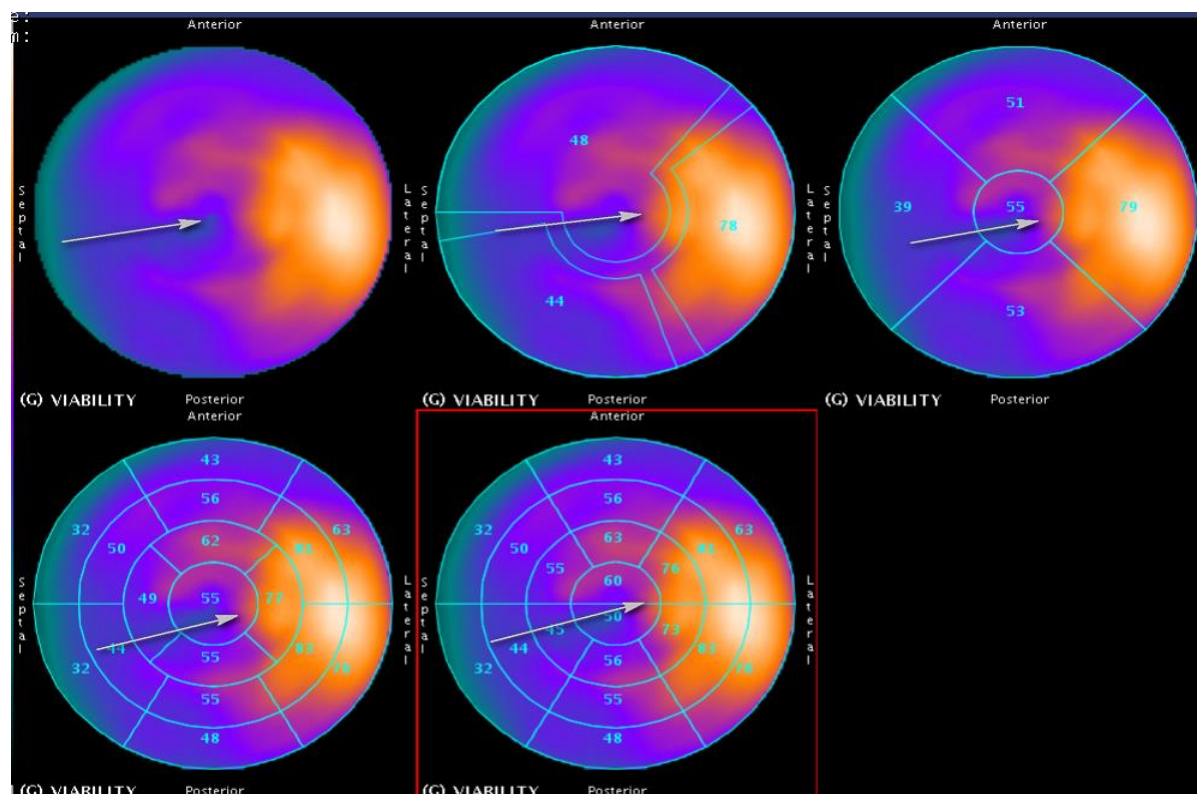


## Supplementary material

*Shumkova M, Vassilev D, Karamfiloff K, et al. Left ventricular noncompaction with a dilative phenotype and novel genetic mutations. Kardiol Pol. 2021.*

Please note that the journal is not responsible for the scientific accuracy or functionality of any supplementary material submitted by the authors. Any queries (except missing content) should be directed to the corresponding author of the article.



**Figure S1.** Positron Emission Tomography - Computed Tomography Scan - performed with  $^{18}\text{F}$ -FDG-390.0 MB, detected preserved myocardial viability in all segments and increased glucose metabolism in the lateral wall of the left ventricle (arrows) which is similar to ischemic coronary artery disease. This area corresponds with the circumflex artery territory.