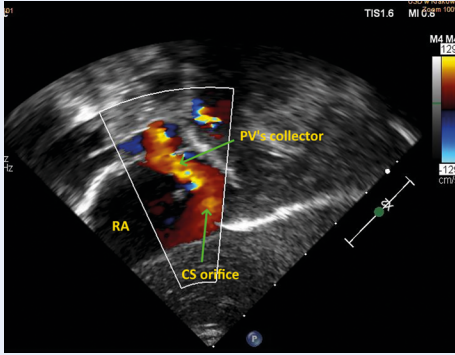
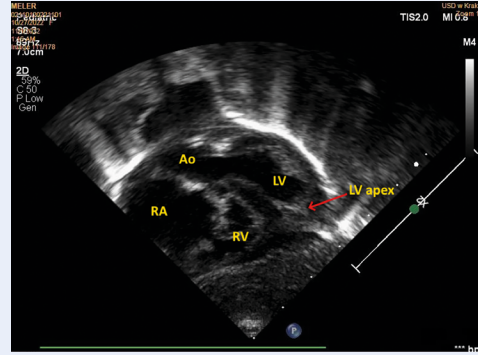


**SUPPLEMENTARY MATERIAL**

Prenatal imaging at 26 weeks of gestation. Video showing pulmonary veins draining to collector and then to coronary sinus (Suppl. video).



**Figure S1.** Postnatal imaging. Modified subcostal view: Pulmonary veins collector draining to wide coronary sinus. Normal coronary sinus orifice indicated by the arrow; PV — pulmonary vein; RA — right atrium; CS — coronary sinus



**Figure S2.** Postnatal imaging. Subcostal 5-chamber view: enlarged right atrium (RA), hypertrophy of right ventricular free wall and interventricular septum bulging during systole into left ventricle. The apex is formed by left ventricle; Ao — aorta; LV — left ventricle; RV — right ventricle