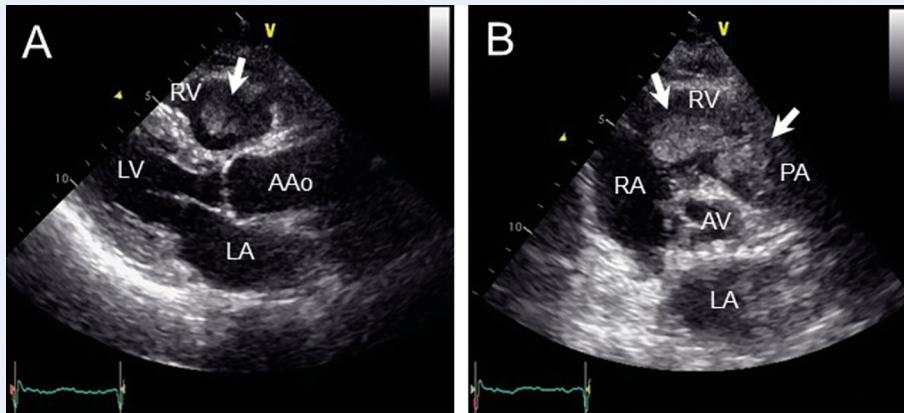


**Figure S1.** A. Sagittal image of T2-weighted pelvic magnetic resonance imaging showing heterogeneous uterine mass with lesions of high and low signal intensity with maximum diameter of 17.9 cm; B. Gross specimen of surgically resected uterine mass; C. Microscopic findings of the resected uterine mass on hematoxylin and eosin staining showing spindled tumor cells with marked nuclear pleomorphism and brisk mitotic activity



**Figure S2.** A, B. Transthoracic echocardiography (A. Parasternal long axis view; B. Parasternal short axis view) showing an intracardiac mass (arrows) extending from the right ventricle (RV) to the main pulmonary artery (PA); Aao — ascending aorta; AV — aortic valve; LA — left atrium; LV — left ventricle; RA — right atrium