

# Formation of the vertebral arches of the cervical, thoracic and lumbar vertebrae in early human foetuses

M. Grzymisławska, W. Woźniak

*Department of Anatomy, University of Medical Sciences, Poznań, Poland*

*Fusion of the neural arches was studied in 6 serially sectioned human foetuses aged 9 and 10 weeks. In foetuses of 9 weeks, the completion of arches was observed in the cervical, upper thoracic, and middle thoracic regions of the vertebral column. During the 10<sup>th</sup> week of development, fusion of neural processes progresses in the lower thoracic and upper three lumbar vertebrae. (Folia Morphol 2010; 69, 3: 177–179)*

**Key words:** human embryology, vertebral column, vertebral arches

## INTRODUCTION

The embryonic development of the vertebral column has been widely investigated [7–11] and has been summarised by O’Rahilly and Meyer [12].

Detailed, well illustrated studies of the vertebral column, as a whole and particular regions of the column, at the end of the embryonic period have been performed by O’Rahilly et al. [13–16].

Bagnal et al. [1–5] studied the foetal vertebral column by radiography, with particular attention paid to longitudinal growth and ossification centres in the vertebral column.

The aim of the present study is the examination of fusion of the neural arches in the cervical, thoracic, and lumbar regions of the vertebral column in foetuses aged 9 and 10 weeks.

## MATERIAL AND METHODS

Serial sections of six human foetuses aged 9 (three foetuses) and 10 (three foetuses) weeks were studied. The foetuses belong to the Collection of the Department of Anatomy of the University of Medical Sciences in Poznań. Sections of thickness 5 and 10  $\mu\text{m}$  were made in the horizontal plane. The stains employed included haematoxylin and eosin, and

cresyl violet (according to Nissl), according to Mallory method, and Bodian’s protargol.

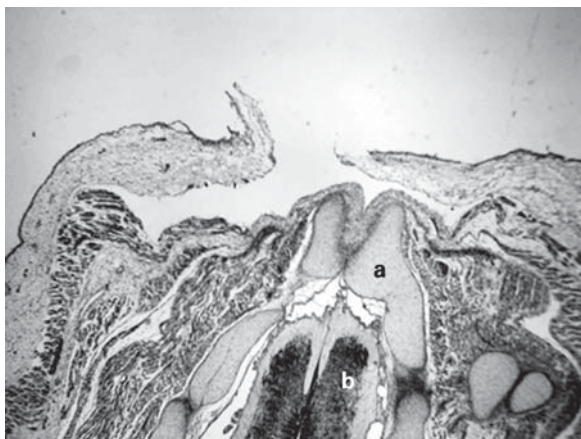
## RESULTS

In all investigated foetuses, the vertebrae form the cartilaginous column and ossification was not detectable.

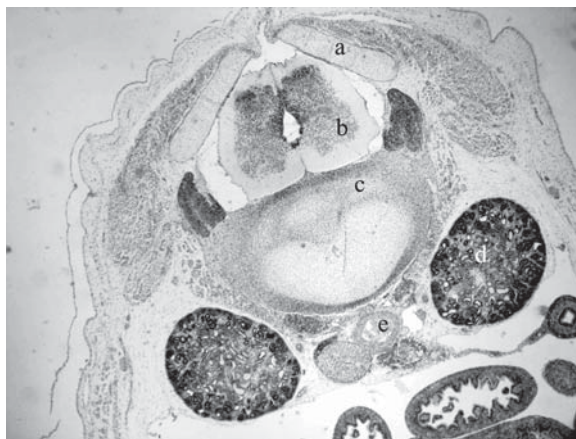
In the nine-week-old foetuses the neural processes of the vertebrae extended dorsally on each side of the neural tube and they united to complete the neural arches which formed the vertebral arches. This completion of the arches was observed in the cervical, upper thoracic, and middle thoracic regions of the vertebral column (Figs. 1–3).

Fusion of the neural processes appeared first on their surface facing the dorsal part of the spinal cord. The ends of these processes were still separated and acquired a bifurcated shape (Figs. 1, 2). This was particularly evident in the cervical and upper thoracic vertebrae. In the lower thoracic and lumbar regions of the spinal cord the neural processes were close to each other but they were still separated (Fig. 4).

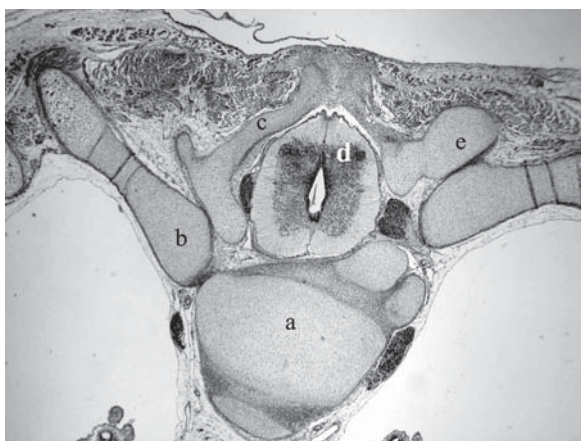
In foetuses aged 10 weeks, fusion of the neural processes was observed in all thoracic and up-



**Figure 1.** Horizontal section of cervical region in foetus of 9 weeks. Stained with cresyl violet;  $\times 40$ ; a — neural process, b — spinal cord.



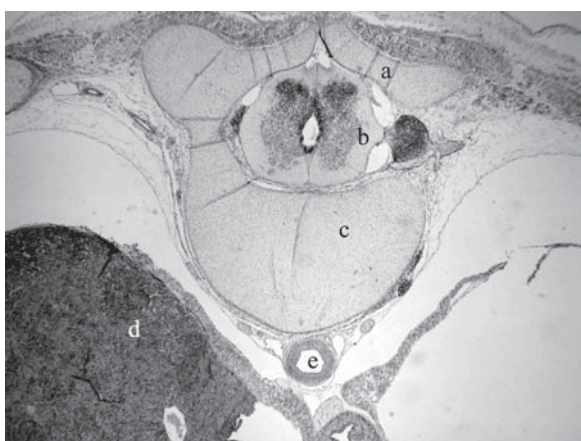
**Figure 4.** Horizontal section of upper lumbar region in foetus of 9 weeks. Stained with cresyl violet;  $\times 40$ ; a — neural process, b — spinal cord, c — intervertebral disc, d — kidney, e — abdominal aorta.



**Figure 2.** Horizontal section of upper thoracic region in foetus of 9 weeks. Stained with cresyl violet;  $\times 40$ ; a — body of vertebra, b — rib, c — neural process, d — spinal cord, e — transverse process.



**Figure 5.** Oblique horizontal section of upper thoracic region in foetus of 10 weeks. Stained with cresyl violet;  $\times 40$ ; a — neural process, b — transverse process, c — ribs, d — spinal cord, e — spinal ganglion.



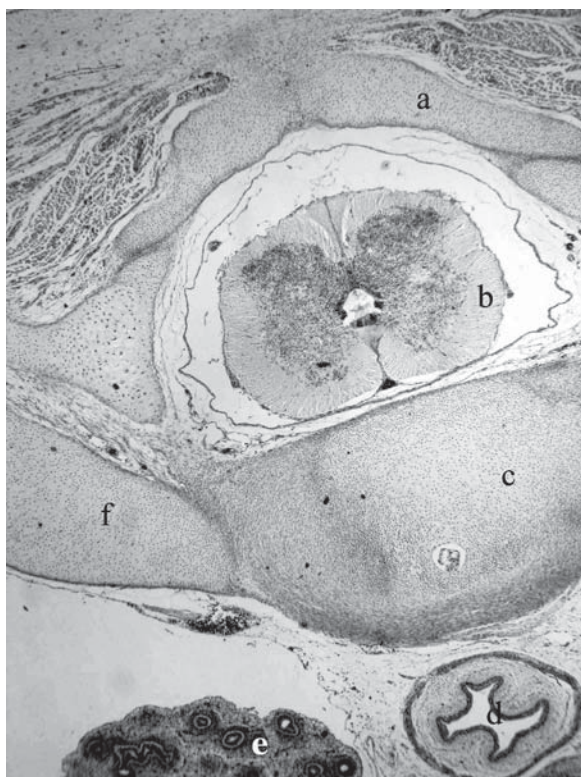
**Figure 3.** Horizontal section of middle thoracic region in foetus of 9 weeks. Stained with cresyl violet;  $\times 40$ ; a — neural process, b — spinal cord, c — body of vertebra, d — liver, e — thoracic aorta.

per three lumbar vertebrae (Figs. 5, 6). In lower 2 lumbar vertebrae the neural processes were close to the median plane but were not fused yet. The neural processes in this region were completed by the membrana reuniens dorsalis, which closed the vertebral canal from surface epithelium and subjacent mesenchyme.

The shape of the fused ends of the neural processes resembled that of the fetuses aged 9 weeks.

## DISCUSSION

Condensation of the sclerotomal mesenchyme around the notochord is the earliest primordium of the skeleton and is frequently referred to as the blastema stage. This stage is followed by the cartilaginous stage which begins early in the 6<sup>th</sup> week. This blastema anlage forms the centrum which lies ven-



**Figure 6.** Horizontal section of lower thoracic region in foetus of 10 weeks. Stained with cresyl violet;  $\times 40$ ; a — neural process, b — spinal cord, c — body of vertebra, d — oesophagus, e — lung, f — rib.

tral to the neural tube and forms the primordium of most of the vertebral body.

According to O'Rahilly and Müller [17], "In terms of adult anatomy, the body of a vertebra includes the centrum and small part of the neural arch. Correspondingly, the vertebral arch is slightly less extensive than the neural arch. A rib articulates with the neural arch and not with the centrum."

From the dorsolateral angles of the centrum, the neural arch grows to enclose the spinal cord.

By the end of the embryonic period, the vertebral column presents a normal spina bifida totalis. The membrana reuniens dorsalis extends between the neural processes.

According to Bardeen [6], the neural arches fuse in fetuses of 50 mm crown-rump length.

In the present study it was found that the fusion of the neural arches progresses craniocaudally. At 9 weeks the completion of neural arches was observed in the cervical, upper thoracic, and middle thoracic regions. In fetuses aged 10 weeks this fusion was found in all thoracic and upper lumbar vertebrae.

## REFERENCES

1. Bagnal KM, Harris PF, Jones PRM (1977) A radiographic study of the human fetal spine. 1. The development of the secondary cervical curvature. *J Anat*, 123: 777–782.
2. Bagnal KM, Harris PF, Jones PRM (1977) A radiographic study of the human fetal spine. 2. The sequence of development of ossification centres in the vertebral column. *J Anat*, 124: 791–802.
3. Bagnal KM, Harris PF, Jones PRM (1979) A radiographic study of the human fetal spine. 3. Longitudinal development of the ossification centres. *J Anat*, 128: 777–787.
4. Bagnal KM, Harris PF, Jones PRM (1982) A radiographic study of the growth in width of the human fetal vertebral column. *Anat Rec*, 204: 265–270.
5. Bagnal KM, Harris PF, Jones PRM (1984) A radiographic study of variations of the human fetal spine. *Anat Rec*, 208: 265–270.
6. Bardeen CR (1905) The development of the thoracic vertebrae in man. *Am J Anat*, 4: 163–174.
7. Götz W, Fischer G, Herken R (1991) Lectin binding pattern in the embryonal and early fetal human vertebral column. *Anat Embryol*, 184: 345–353.
8. Götz W, Osmers R, Herken R (1995) Localisation of extracellular matrix components in the embryonic human notochord and axial mesenchyme. *J Anat*, 186: 111–121.
9. Müller F, O'Rahilly R (1986) Somitic-vertebral correlation and vertebral levels in the human embryo. *Amer J Anat*, 177: 3–19.
10. Müller F, O'Rahilly R (1994) Occipitocervical segmentation in staged human embryos. *J Anat*, 185: 251–258.
11. Müller F, O'Rahilly R (2003) Segmentation in staged human embryos: the occipitocervical region revisited. *J Anat*, 203: 297–315.
12. O'Rahilly R, Meyer DB (1979) The timing and sequence of events in the development of the human vertebral column during the embryonic period proper. *Anat Embryol*, 157: 167–176.
13. O'Rahilly R, Müller F, Meyer DB (1980) The human vertebral column at the end of the embryonic period proper. 1: The column as a whole. *J Anat*, 131: 565–575.
14. O'Rahilly R, Müller F, Meyer DB (1983) The human vertebral column at the end of the embryonic period proper. 2: The occipitocervical region. *J Anat*, 136: 181–195.
15. O'Rahilly R, Müller F, Meyer DB (1990) The human vertebral column at the end of the embryonic period proper. 3: The thoracolumbar region. *J Anat*, 168: 81–93.
16. O'Rahilly R, Müller F, Meyer DB (1990) The human vertebral column at the end of the embryonic period proper. 4: The sacrococcygeal region. *J Anat*, 168: 95–111.
17. O'Rahilly R, Müller F (2001) *Human embryology and teratology*. 3<sup>rd</sup> Ed. Willey-Liss. New York, Chichester, Weinheim, Brisbane, Singapore, Toronto.