

Expression of the membrane complement regulatory proteins (CD55 and CD59) in human thymus

Dariusz Śladowski^{1,2}, Aleksander Wasiutyński³, Grzegorz Wilczyński³,
Iwona Grabska-Liberek⁴, Sandra Coecke², Agnieszka Kinsner²
and Iwona Kochanowska⁵

¹Department of Transplantology and Central Tissue Bank, Centre of Biostructure Research, Medical University, Warsaw, Poland;

²European Centre for Validation of Alternative Methods, Institute for Health and Consumer Protection Joint Research Centre, European Commission, Ispra, Italy;

³Department of Pathology, Medical University, Warsaw, Poland;

⁴Department of Ophthalmology, Medical University, Warsaw, Poland;

⁵Polish Academy of Sciences, L. Hirszfeld Institute of Immunology and Experimental Therapy, Wrocław, Poland

Abstract: CD59 is one of the key molecules involved in cell protection against autologous complement. The fact that complement regulatory proteins are able to prevent hyperacute rejection of organs in pig to primate model, raises the question of possible complement regulatory protein (CRP) involvement in the maturation of immunological system. We report here that in foetal and postnatal human thymus, CD59 and CD55 are primarily located on Hassall's corpuscles and medullary epithelial cells. This localization highly correlates with the expression of CD30L, which is the member of the tumour necrosis factor superfamily. Additionally, TUNEL technique was used to visualize distribution of apoptotic cells in the thymus, which revealed the presence of apoptotic cells closely associated with the Hassall's corpuscles. The observed co-localization of CD59, CD55 and CD30L might suggest an involvement of the complement system in thymic selection in humans.

Key words: Hassall's corpuscles - CD59 - CD55 - CD30L - Immunohistochemistry - Complement - Apoptosis - Clone selection

Introduction

The membrane attack complex inhibitory protein CD59 and Decay Accelerating Factor CD55 are two of the key members of the family of complement regulatory proteins (CRPs), molecules protecting autologous cells against inappropriate complement activation [10]. Protection effect is achieved by interfering with the assembly of the membrane attack complex and the insertion of complement 9 into the cell membrane [33], thus preventing formation of membrane attack complexes (MAC). CD59 binds to preformed C5b-8 complex in a way that blocks polymerisation of C9 molecules forming the channel of MAC. Additionally

to complement regulatory function, CD59 acts as a signal transduction molecule [11]. The primary role of CD55 is deactivation of complement (C3 and C5) convertases [31]. Both CD59 and CD55 proteins are attached to the external surface of the cell membrane by glycosylphosphatidylinositol (GPI) moiety attached to their C-terminal end enabling high mobility of the molecule within the biological membranes. The molecules acting on two different levels of complement activation are very effective elements of anti-complement shield. The ability of CD59 and CD55 to stop the complement-mediated damage has been used to develop strategies aimed at creation of transgenic animals which serve as organ donors for clinical applications [1, 7-9, 12, 18, 26, 27, 29, 35]. The observed protective effect preventing rejection of xenotransplants raises the question about possible involvement of CRPs in the selection of lymphocytes in human thymus.

Correspondence: D. Śladowski, Dept. Transplantology and Central Tissue Bank, Medical University, Chałubińskiego 5, 02-004 Warsaw, Poland; e-mail: dslado@ib.amwaw.edu.pl

Uncontrolled overexpression of CD59 and CD55 on thymocytes might result in decreased sensitivity of these cells to complement-mediated damage and in turn protect them from immunologic surveillance, as demonstrated in case of several malignant tumour cells [16, 30, 48]. As leukaemic blasts are protected by relatively high expression of CRPs [17], the precise regulation of GPI-anchored CRPs distribution in thymus seems very essential for the normal function of this organ. Numerous investigators have extensively studied the distribution of CD59 proteins in the human organism [2, 20-23, 28, 32, 36, 37, 42, 47] but there is almost no information available about its morphological localisation in thymus. The aim of the present study was to elucidate the distribution of CD59 in human thymus.

Materials and methods

Materials and reagents. The study was performed on 9 thymus samples obtained from humans of different age. Thymuses were obtained as surgical waste material removed during corrective heart surgery. Three of them were foetal (age 6-8 months of pregnancy) obtained during autopsy. The other six thymuses were obtained during surgery (age 0-13 years of age). CRPs were localized in standard paraffin sections using immunohistochemical methods. Indirect biotin-avidin-peroxidase technique with two different anti-human CD59 monoclonal antibodies: rat IgG clone YTH.53.1 (Serotec® Kidlington, UK) and mouse IgG Clone MEM-43 (Cymbus, Hampshire, UK). CD55 was identified with mouse monoclonal antibodies (Serotec® Kidlington, UK). CD30L antibody was purchased from Genzyme Diagnostics® (Cambridge, MA). Macrophages were localised using monoclonal antibody NCL-LN5 (Novocastra® Newcastle upon Tyne, UK). Thymocytes were identified by staining with mouse anti CD3 monoclonal antibodies (Novocastra® Newcastle upon Tyne, UK). Apoptotic cells were localised using TUNEL technique (ApopTag™ Oncor®, Gaithersburg, MD).

Immunohistochemistry. The thymic tissue was fixed in standard 4% paraformaldehyde aqueous solution and embedded in paraffin. Staining was performed on 8 µm paraffin sections which were first heated at 56°C for 60 min and then deparaffinised. Additionally, high temperature unmasking technique was used. In brief, slides were boiled in 0.01 M sodium citrate buffer (2.94 g/l of tri-sodium citrate solution adjusted to pH 6.0 using 1.0 M HCl) in a pressure cooker for about 5 min. After the heat treatment, slides were washed in TBS (Tris buffered saline). After quenching endogenous peroxidase with 0.5% H₂O₂ in methanol for 30 min, sections were blocked with horse serum for 30 min at room temperature and exposed to monoclonal antibodies at 4°C overnight. Staining was performed using anti-CD59 monoclonal antibodies (rat YTH 53.1 and mouse MEM43) (1:100) anti-CD3 antibodies, NCL-LN5 antibodies (1:50) and anti-CD30L antibody (1:50). Visualisation of antibodies was obtained using ABC technique according to manufacturer's protocol (Novocastra ABC kit, cat. no. NCL-ABCu). DAB (Sigma®) was used as chromogen. Sections were counterstained with haematoxylin and mounted in glycerol-gelatin (Sigma®). Isotypic antibodies (Serotec® Kidlington, UK) were used as a control.

TUNEL method. Detection of apoptotic cells was performed using commercial kit (ApopTag™ (Oncor®, Gaithersburg, MD), according to manufacturers recommendations. Briefly, after deparaffinization slides were incubated in 1 µg/ml of Proteinase K

in 10 mM Tris solution for 15 min at room temperature. Endogenous peroxidase activity was blocked by incubation in 3% hydrogen peroxide in phosphate buffered saline (PBS). The sections were then incubated with terminal deoxynucleotidyl transferase at 37°C for 60 min (adding the digoxigenin-conjugated dUTP to the 3'-OH ends of fragmented DNA). To detect the digoxigenin-labelled nucleotides, specific antibodies conjugated with peroxidase were used. The sections were stained with 4-chloro-1-naphthol (CN). Apoptotic cells were stained dark blue.

Results

In foetal thymus (3 cases examined), CD59 was identified predominantly on Hassall's corpuscles (Fig. 1) in the medulla, decreasing its expression during the first year after birth (3 cases). In thymuses obtained from older patients (more than 1 year old, 3 cases), CD59 was still detectable on Hassall's corpuscles (Fig. 3A) but only when high temperature unmasking technique was used. The distinctive feature of the staining was the multilayered pattern of Hassall's corpuscles (Fig. 2). The staining pattern was similar for anti-CD59 (YTH.53.1 and MEM 43) and anti-CD55 monoclonal antibodies used in the study (Fig. 3B). The results of TUNEL staining revealed accumulation of apoptotic cells in close contact with the Hassall's corpuscles (Fig. 3C). Apoptotic cells were also distributed "randomly" in other parts of thymus (not shown). Staining with anti-CD30L antibody revealed distribution of this protein mainly on Hassall's corpuscles, which was similar to that of CD59 and CD55 (Fig. 3D). A different pattern of staining was observed when the sections were labelled with monoclonal anti-CD3 antibodies (Fig. 3E) or macrophage marker (LN5 MoA) (Fig. 3F). In both cases Hassall's corpuscles were negative, while positive cells (CD3 and LN5) were present in large numbers in thymic medulla and cortex. Isotypic controls revealed no unspecific binding of antibodies to Hassall's corpuscles. Additionally it was observed that CD3-positive thymocytes and LN5-positive phagocytic cells had low level of CD59 and CD55 expression. The level of CD59 and CD55 expression on thymocytes increased with age and was dependent on the region of thymus. It was not detectable in cortex and increased toward the medullary region.

Discussion

Despite the widespread interest in thymus development [4-6, 39], relatively little is known about the role and origin of Hassall's corpuscles. These structures consisting of several layers of cell membranes are frequently found in the thymic medulla of thymus. The number of Hassall's corpuscles increases with age, indicating their involvement in thymus maturation. Additionally, the morphology of Hassall's corpuscles changes with age: in foetal thymuses they are relatively small and regularly shaped in contrast with struc-

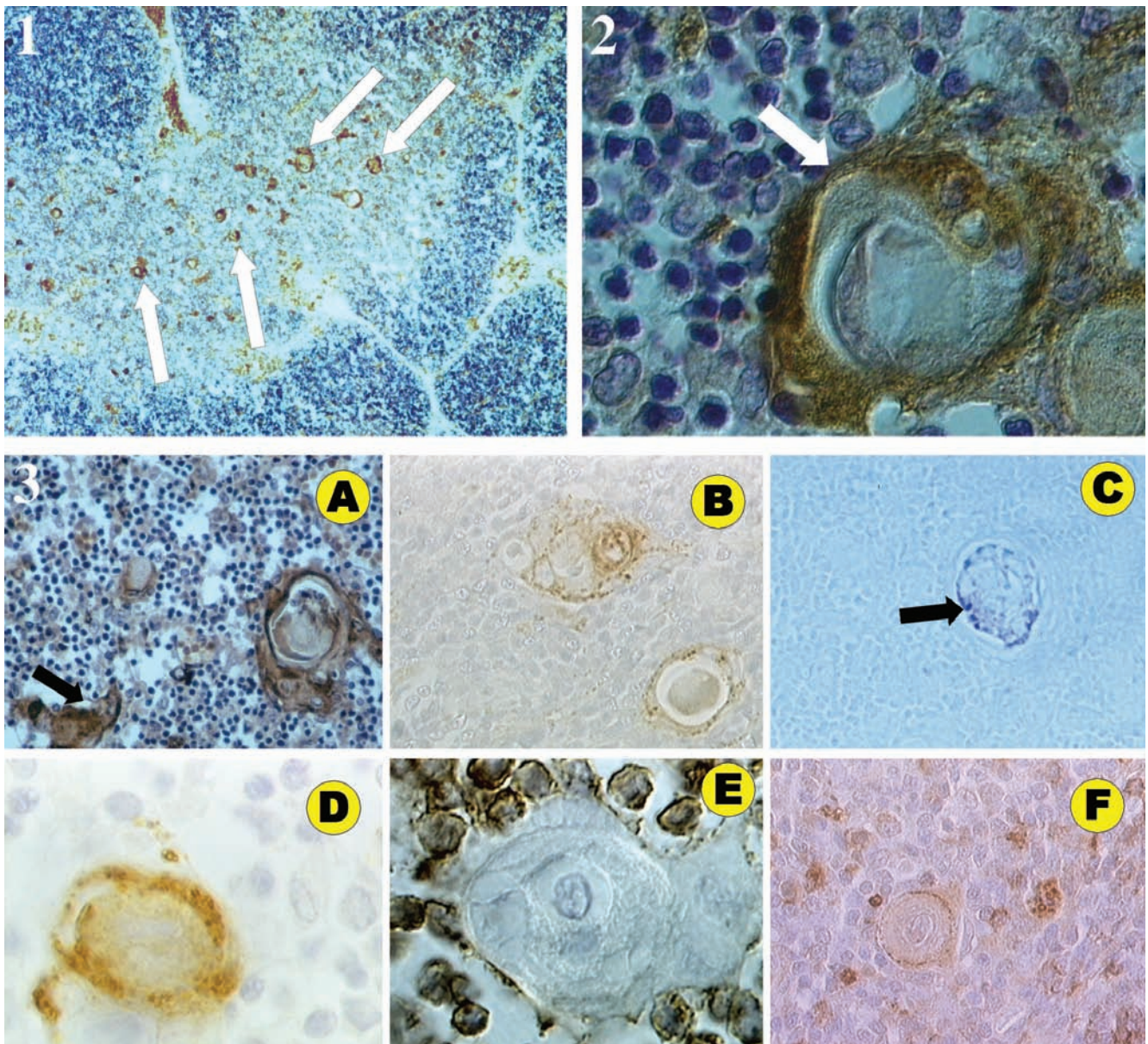


Fig. 1. CD59 distribution in foetal human thymus. Arrows are pointing to Hassall's corpuscles. $\times 100$. **Fig. 2.** CD59 localization within Hassall's corpuscles from foetal human thymus. Clearly visible association of CD59 with membranes (arrow). $\times 600$. **Fig. 3.** **A.** CD59 localisation in human postnatal thymus on Hassall's corpuscle and nursing cells (arrow). $\times 200$. **B.** CD55 localisation on foetal Hassall's corpuscle. $\times 200$. **C.** Apoptotic cells (indicated by arrow) in close association with outer layer of Hassall's corpuscle. Postnatal thymus (TUNEL method). $\times 200$. **D.** CD 30L immunostaining of Hassall's corpuscle. $\times 400$. **E.** Thymocytes surrounding Hassall's corpuscle. CD3 immunostaining. $\times 400$. **F.** Postnatal thymus stained with macrophage marker, antibody NL-5. $\times 200$.

tures appearing during first years of life [38]. The pattern of CD59 staining in thymus was almost identical to that observed by other authors in case of CD30L [41]. This observation and the localization of apoptotic cells in close contact with CD59-positive cells, might suggest that those two molecules might play an important role in thymic selection in man. This hypothesis is also supported by clusterin distribution in rat thymus [13, 14]. Clusterin, which is analogous in function to CD59 in preventing MAC formation [45], is highly expressed in the medullary region of thymus

[13, 14]. This localisation together with low level of CD59 on thymocytes indicates possible high susceptibility of immature thymocytes to complement attack. It is possible that CD59 expression increases on Hassall's corpuscles because of close association with apoptotic thymocytes in a similar way as proposed in case of clusterin [25, 40].

It might be also hypothesized that Hassall's corpuscles act as CD59 scavengers, collecting CRPs from apoptotic thymocytes. As outer layers of cells forming Hassall's corpuscles are closely associated with apop-

totic cells, it might be hypothesised that they act in a similar way as high endothelial venule cells [19].

The signal from CD30L transduced into cells via TNF receptors seems to induce not only apoptosis in negatively selected thymocytes, but also CD59 release from the cell surface, rendering thymocytes vulnerable to complement attack. Transfer of CRPs can be facilitated by the close physical association between thymocytes and stromal cells [43]. Decrease in CRP expression has been already observed during apoptosis of peripheral granulocytes [24] and lymphocytes [3, 23, 46]. On the other hand, increased expression of CRPs on lymphomas has been identified as an element of evading immunological surveillance [15, 34, 44]. It might be hypothesised that CD59-deficient thymocytes even when released from thymus might be eliminated from the organism by simple complement activation. iC3b-coated apoptotic vesicles might be phagocytosed by spleen and/or liver macrophages. This mechanism might explain the apparent inconsistency between death rate in thymus and the capacity of thymic macrophages to destroy cell debris. The observed increased surface expression of CRPs on medullary thymocytes might suggest that maturation of thymocytes might be associated with the acquisition of resistance to complement attack.

Acknowledgements: This study was supported by the State Committee for Scientific Research, grant S3 PO5B 097 24.

References

- [1] Akami T, Arakawa K, Okamoto M, Sawada R, Naruto M, Oka T (1993) The role of human CD59 antigen in discordant xenotransplantation between humans and nonprimates. *Transplant Proc* 25: 394-395
- [2] Akatsu H, Yamada T, Okada N, Yamamoto T, Yamashina M, Okada H (1997) Unique expression of HRF20 (CD59) in human nervous tissue. *Microbiol Immunol* 41: 321-329
- [3] Aries SP, Schaaf B, Hansen F, Weyrich K, Kurowski V, Dennin R, Dalhoff K (1997) Expression of complement receptors and regulatory proteins on alveolar CD4+ lymphocytes from human immunodeficiency virus-1 infected individuals. *Eur Respir J* 10: 1736-1741
- [4] Brelińska R, Jaroszewicz A, Kowalska K (2002) Age-related changes in rat thymic epithelial cells. *Folia Histochem Cytobiol* 40: 173-174
- [5] Brelińska R, Ostalska D, Paczkowska A, Jaroszewski J (2001) Histogenesis of the rat thymic medulla during first stages of development. *Folia Histochem Cytobiol* 39: 197-198
- [6] Brelińska R, Ostalska D, Kaczmarek E, Kowalska K (2002) Stages of the rat thymic medulla development in foetal period. *Folia Histochem Cytobiol* 40: 171-172
- [7] Charreau B, Cassard A, Tesson L, Le Mauff B, Blanchard D, Lublin D, Souliou JP, Anegon I (1994) Protection of rat endothelial cells from primate complement-mediated lysis by expression of human CD59 and/or decay-accelerating factor. *Transplantation* 58: 1222-1229
- [8] Chen RH, Naficy S, Logan JS, Diamond LE, Adams DH (1999) Hearts from transgenic pigs constructed with CD59/DAF genomic clones demonstrate improved survival in primates. *Xenotransplantation* 6: 194-200
- [9] Chen S, Chen G, Cai CC, Wang XM, Guo H, Shen SQ, Wang H, Wu Y, Li GX, Huang J, Li WX, Wei QX, Sun FZ (2001) A study of human DAF, CD59, MCP transgene in xenotransplantation. *Transplant Proc* 33: 3851-3852
- [10] Dave SJ, Sodetz JM (1990) Regulation of the membrane attack complex of complement. Evidence that C8 gamma is not the target of homologous restriction factors. *J Immunol* 144: 3087-3090
- [11] Deckert M, Ticchioni M, Mari B, Mary D, Bernard A (1995) The glycosylphosphatidylinositol-anchored CD59 protein stimulates both T cell receptor zeta/ZAP-70-dependent and -independent signaling pathways in T cells. *Eur J Immunol* 25: 1815-1822
- [12] Diamond LE, McCurry KR, Oldham ER, Tone M, Waldmann H, Platt JL, Logan JS (1995) Human CD59 expressed in transgenic mouse hearts inhibits the activation of complement. *Transpl Immunol* 3: 305-312
- [13] French LE, Sappino AP, Tschopp J, Schifferli JA (1992) Distinct sites of production and deposition of the putative cell death marker clusterin in the human thymus. *J Clin Invest* 90: 1919-1925
- [14] French LE, Sappino AP, Tschopp J, Schifferli JA (1994) Clusterin gene expression in the rat thymus is not modulated by dexamethasone treatment. *Immunology* 82: 328-331
- [15] Golay J, Zaffaroni L, Vaccari T, Lazzari M, Borleri GM, Bernasconi S, Tedesco F, Rambaldi A, Introna M (2000) Biologic response of B lymphoma cells to anti-CD20 monoclonal antibody rituximab *in vitro*: CD55 and CD59 regulate complement-mediated cell lysis. *Blood* 95: 3900-3908
- [16] Gorter A, Meri S (1999) Immune evasion of tumor cells using membrane-bound complement regulatory proteins. *Immunol Today* 20: 576-582
- [17] Guc D, Canpinar H, Kucukaksu C, Kansu E (2000) Expression of complement regulatory proteins CR1, DAF, MCP and CD59 in haematological malignancies. *Eur J Haematol* 64: 3-9
- [18] Hayashi S, Isobe K, Emi N, Yokoyama I, Takagi H (1994) Inhibition of species-specific complement-mediated cytolysis in xenoendothelial cells transfected with GPI-anchored complement regulatory factor (DAF, HRF20) gene using retroviral vector: comparison between single (DAF or HRF20) and double (DAF and HRF20) transfected xenoendothelial cells. *Transplant Proc* 26: 1243-1244
- [19] Hess KL, Tudor KS, Johnson JD, Osati-Ashtiani F, Askew DS, Cook-Mills JM (1997) Human and murine high endothelial venule cells phagocytose apoptotic leukocytes. *Exp Cell Res* 236: 404-411
- [20] Hideshima T, Okada N, Okada H (1990) Expression of HRF20, a regulatory molecule of complement activation, on peripheral blood mononuclear cells. *Immunology* 69: 396-401
- [21] Holmes CH, Simpson KL, Okada H, Okada N, Wainwright SD, Purcell DF, Houlihan JM (1992) Complement regulatory proteins at the feto-maternal interface during human placental development: distribution of CD59 by comparison with membrane cofactor protein (CD46) and decay accelerating factor (CD55). *Eur J Immunol* 22: 1579-1585
- [22] Jensen TS, Bjorge L, Wollen AL, Ulstein M (1995) Identification of the complement regulatory proteins CD46, CD55, and CD59 in human fallopian tube, endometrium, and cervical mucosa and secretion. *Am J Reprod Immunol* 34: 1-9
- [23] Jiang H, Pillai S (1998) Complement regulatory proteins on the sperm surface: relevance to sperm motility. *Am J Reprod Immunol* 39: 243-248
- [24] Jones J, Morgan BP (1995) Apoptosis is associated with reduced expression of complement regulatory molecules, adhesion molecules and other receptors on polymorphonuclear

- clear leucocytes: functional relevance and role in inflammation. *Immunology* 86: 651-660
- [25] Koch-Brandt C, Morgans C (1996) Clusterin: a role in cell survival in the face of apoptosis? *Prog Mol Subcell Biol* 16: 130-149
- [26] Kroshus TJ, Bolman RM III, Dalmaso AP, Rollins SA, Guilmette ER, Williams BL, Squinto SP, Fodor WL (1996) Expression of human CD59 in transgenic pig organs enhances organ survival in an *ex vivo* xenogeneic perfusion model. *Transplantation* 61: 1513-1521
- [27] Kulick DM, Salerno CT, Dalmaso AP, Park SJ, Paz MG, Fodor WL, Bolman RM III (2000) Transgenic swine lungs expressing human CD59 are protected from injury in a pig-to-human model of xenotransplantation. *J Thorac Cardiovasc Surg* 119: 690-699
- [28] Kunii H, Shichishima T, Saitoh Y, Noji H, Maruyama Y (1998) Surface expression of complement regulatory proteins, decay-accelerating factor (DAF) and CD59, on cultured human endothelial cells. *Fukushima J Med Sci* 44: 69-81
- [29] Lavitrano M, Frati L (1999) Xenotransplantation: state of the art. *Forum (Genova)* 9: 74-83
- [30] Maio M, Brasoveanu LI, Coral S, Sigalotti L, Lamaj E, Gasparollo A, Visintin A, Altomonte M, Fonsatti E (1998) Structure, distribution, and functional role of protectin (CD59) in complement-susceptibility and in immunotherapy of human malignancies. *Int J Oncol* 13: 305-318
- [31] Medof ME, Kinoshita T, Silber R, Nussenzweig V (1985) Amelioration of lytic abnormalities of paroxysmal nocturnal hemoglobinuria with decay-accelerating factor. *Proc Natl Acad Sci USA* 82: 2980-2984
- [32] Meri S, Waldmann H, Lachmann PJ (1991) Distribution of protectin (CD59), a complement membrane attack inhibitor, in normal human tissues. *Lab Invest* 65: 532-537
- [33] Meri S, Morgan BP, Davies A, Daniels RH, Olavesen MG, Waldmann H, Lachmann PJ (1990) Human protectin (CD59), an 18,000-20,000 MW complement lysis restricting factor, inhibits C5b-8 catalysed insertion of C9 into lipid bilayers. *Immunology* 71: 1-9
- [34] Michetti F (1980) Antigenic properties of the loosely bound subnuclear fraction of rat brain. *Neurochem Res* 5: 731-743
- [35] Miyagawa S, Shirakura R, Matsumiya G, Nakata S, Matsuda H, Hatanaka M, Matsumoto M, Seya T (1994) Possibility of prevention of hyperacute rejection by DAF and CD59 in xenotransplantation. *Transplant Proc* 26: 1235-1238
- [36] Nose M, Katoh M, Okada N, Kyogoku M, Okada H (1990) Tissue distribution of HRF20, a novel factor preventing the membrane attack of homologous complement, and its predominant expression on endothelial cells *in vivo*. *Immunology* 70: 145-149
- [37] Oglesby TJ, Longwith JE, Huettner PC (1996) Human complement regulator expression by the normal female reproductive tract. *Anat Rec* 246: 78-86
- [38] Ors U, Dagdeviren A, Kaymaz FF, Muftuoglu SF (1999) Cysts in human thymus: maturational forms of Hassal's corpuscles? *Okajimas Folia Anat Jpn* 76: 61-69
- [39] Ostalska D, Brelinska R, Jaroszewski J (1999) Pattern of cytokeratin 8 expression in the developing rat thymus. *Folia Histochem Cytobiol* 37: 159-160
- [40] Park JH, Park JS, Ju SK, Lee KB, Park YK, Kang MH, Na SY, You KH (2003) Clusterin mRNA expression in apoptotic and activated rat thymocytes. *Cell Res* 13: 49-58
- [41] Romagnani P, Annunziato F, Manetti R, Mavilia C, Lasagni L, Manuelli C, Vannelli GB, Vanini V, Maggi E, Pupilli C, Romagnani S (1998) High CD30 ligand expression by epithelial cells and Hassal's corpuscles in the medulla of human thymus. *Blood* 91: 3323-3332
- [42] Simpson KL, Houlihan JM, Holmes CH (1993) Complement regulatory proteins in early human fetal life: CD59, membrane co-factor protein (MCP) and decay-accelerating factor (DAF) are differentially expressed in the developing liver. *Immunology* 80: 183-190
- [43] Stryjski R, Warchol JB, Brelinska R, Jaroszewski J (1992) Analysis of thymocyte contacts with other thymic cells. *Folia Histochem Cytobiol* 30: 57-62
- [44] Treon SP, Mitsiades C, Mitsiades N, Young G, Doss D, Schlossman R, Anderson KC (2001) Tumor cell expression of CD59 is associated with resistance to CD20 serotherapy in patients with B-cell malignancies. *J Immunother* 24: 263-271
- [45] Tschopp J, Chonn A, Hertig S, French LE (1993) Clusterin, the human apolipoprotein and complement inhibitor, binds to complement C7, C8 beta, and the b domain of C9. *J Immunol* 151: 2159-2165
- [46] Tsunoda S, Kawano M, Koni I, Kasahara Y, Yachie A, Miyawaki T, Seki H (2000) Diminished expression of CD59 on activated CD8+ T cells undergoing apoptosis in systemic lupus erythematosus and Sjogren's syndrome. *Scand J Immunol* 51: 293-299
- [47] Varsano S, Frolkis I, Ophir D (1995) Expression and distribution of cell-membrane complement regulatory glycoproteins along the human respiratory tract. *Am J Respir Crit Care Med* 152: 1087-1093
- [48] Weichenthal M, Siemann U, Neuber K, Breitbart EW (1999) Expression of complement regulatory proteins in primary and metastatic malignant melanoma. *J Cutan Pathol* 26: 217-221

Received: October 10, 2005

Accepted after revision: May 29, 2006