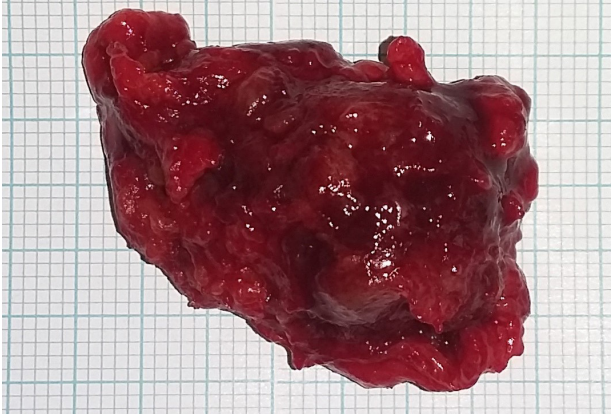
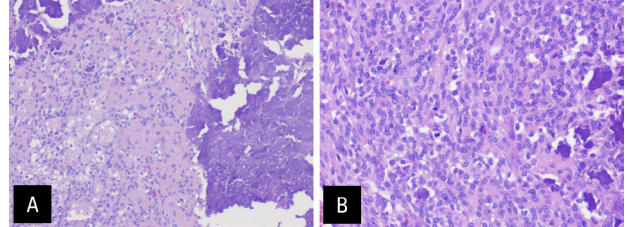


## Supplementary file



**Figure S1.** The macroscopic features of the patient's phosphaturic mesenchymal tumour after surgical removal. During the surgery under local anaesthesia, the lesion measuring  $22 \times 15 \times 8$  mm was removed from the subcutaneous tissue completely



**Figure S2.** A haematoxylin and eosin staining,  $20\times$  magnification (A), and  $40\times$  magnification (B) of the phosphaturic mesenchymal tumour. Histopathological image of the phosphaturic mesenchymal tumour shows small fusiform cells, which focally undergo chondroblast-like differentiation, with deposition of a homogenous substance undergoing calcification. Numerous blood vessels with a wide, angulated lumina were present (not shown). Mitotic index amounted to 2/10 HPF, Ki-67 index: 1%