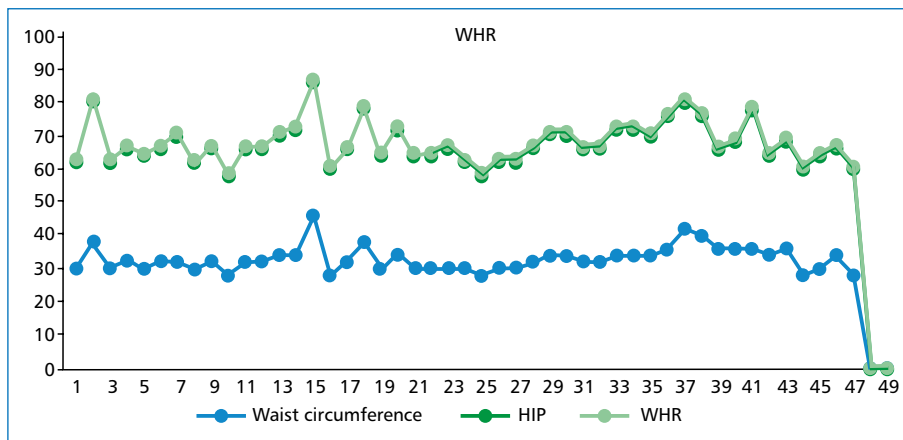


Supplementary Table 1. Lists the Inclusion and Exclusion Standards for Choosing Patients

Inclusion criteria	Exclusion criteria
Male and female patients who are more than 18 years of age	Patients who have malignancy/chronic GI disease/heart failure/ /chronic steroid use
Patients who are willing to participate in the study by signing the informed consent form	Patients who are not willing to give written informed consent
Patients who have RT-PCR-positive COVID report	Patients who are alcoholic
Patients with immunosuppressant drugs	

GI — gastrointestinal; RT-PCR — real time polymerase chain reaction



Supplementary Figure 1. Showing Waist–Hip Ratio (WHR) of All Subjects